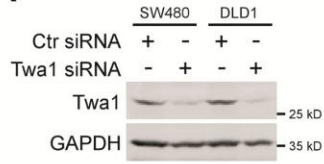
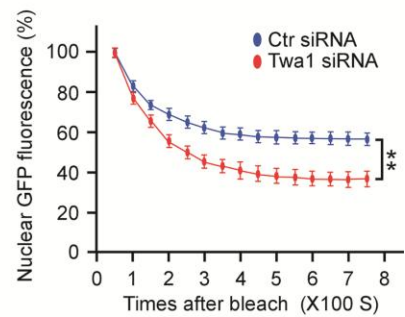
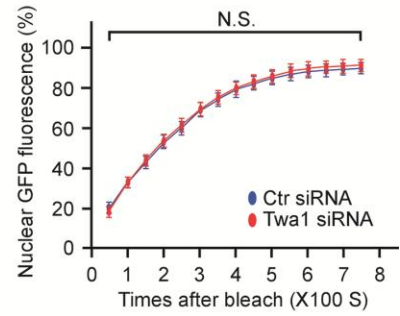
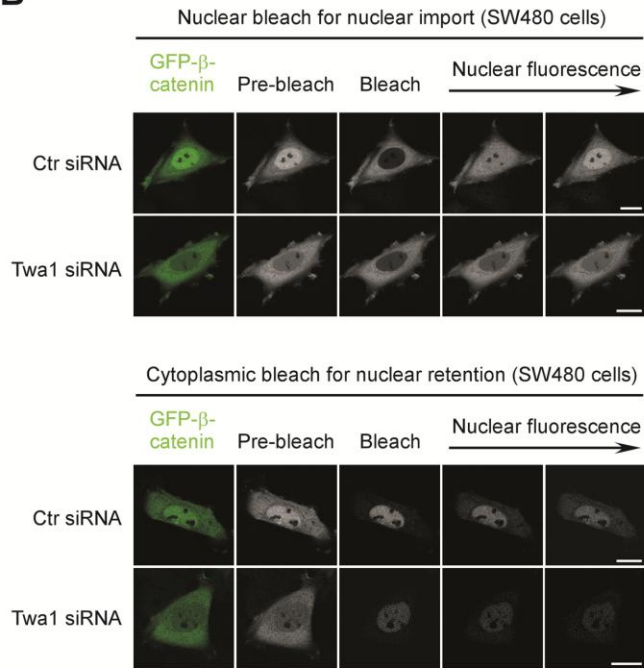
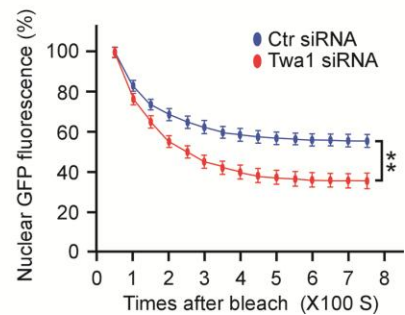
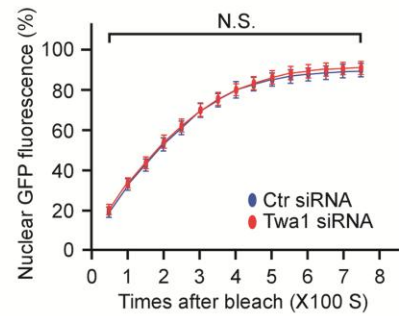
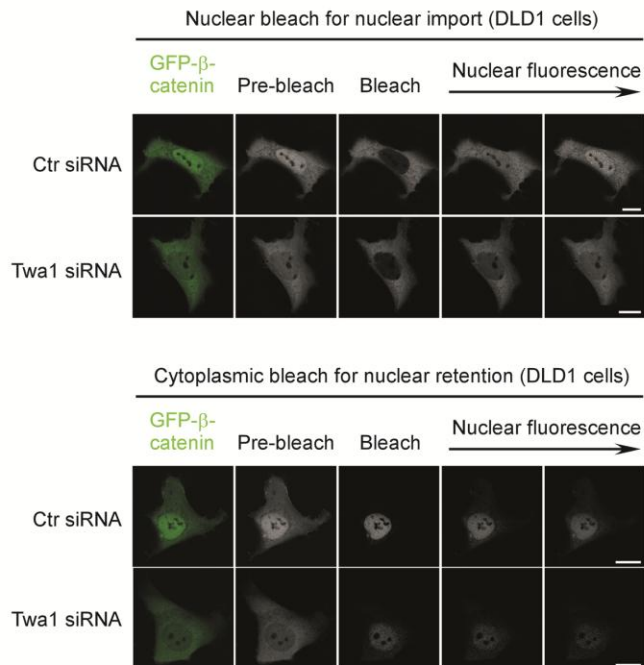


A**B****C**

Supplementary information, Figure S13 Twa1 is required for β -catenin nuclear retention in colon cancer cells. **(A)** Western analysis showing the efficiency of Twa1 knockdown in SW480 and DLD1 cells. The cells transfected with Twa1 siRNA or control siRNA (ctr siRNA) were subjected to immunoblotting with the indicated antibodies. GAPDH was used as a loading control. **(B, C)** SW480 cells **(B)** or DLD1 cells **(C)** transfected with GFP- β -catenin and the indicated siRNAs were subjected to FRAP analysis. The intensity of nuclear fluorescence was monitored for ~ 750 s and plotted against time. Scale bars, 10 μ m. Quantitative data are presented as the mean \pm SEM (at least three independent experiments). N.S., not significant. **** $P < 0.01$** , Student's *t* test.