

Supporting Information

Exploring the Dynamics of Four RNA-dependent RNA Polymerases by a Coarse-Grained Model

Hujun Shen[†], Ibrahim M. Moustafa[‡], Craig E. Cameron[‡], Coray M. Colina^{†*}

[†] Department of Materials Science and Engineering, [‡] Department of Biochemistry and Molecular Biology,
Pennsylvania State University, University Park, PA, 16802 USA

* Corresponding author: Coray M. Colina, e-mail: colina@matse.psu.edu

FIGURE S1. B-factors of PV wild type (WT) were obtained from the ENM/MARTINI simulations (green) over the last 700 ns along with the result of atomistic MD simulation (red) over the last 5 ns. Force constants were rescaled by using the scaling factors of (a) 1.0, (b) 1/2, (c) 1/4, (d) 1/10, (e) 1/20, and (f) 1/30.

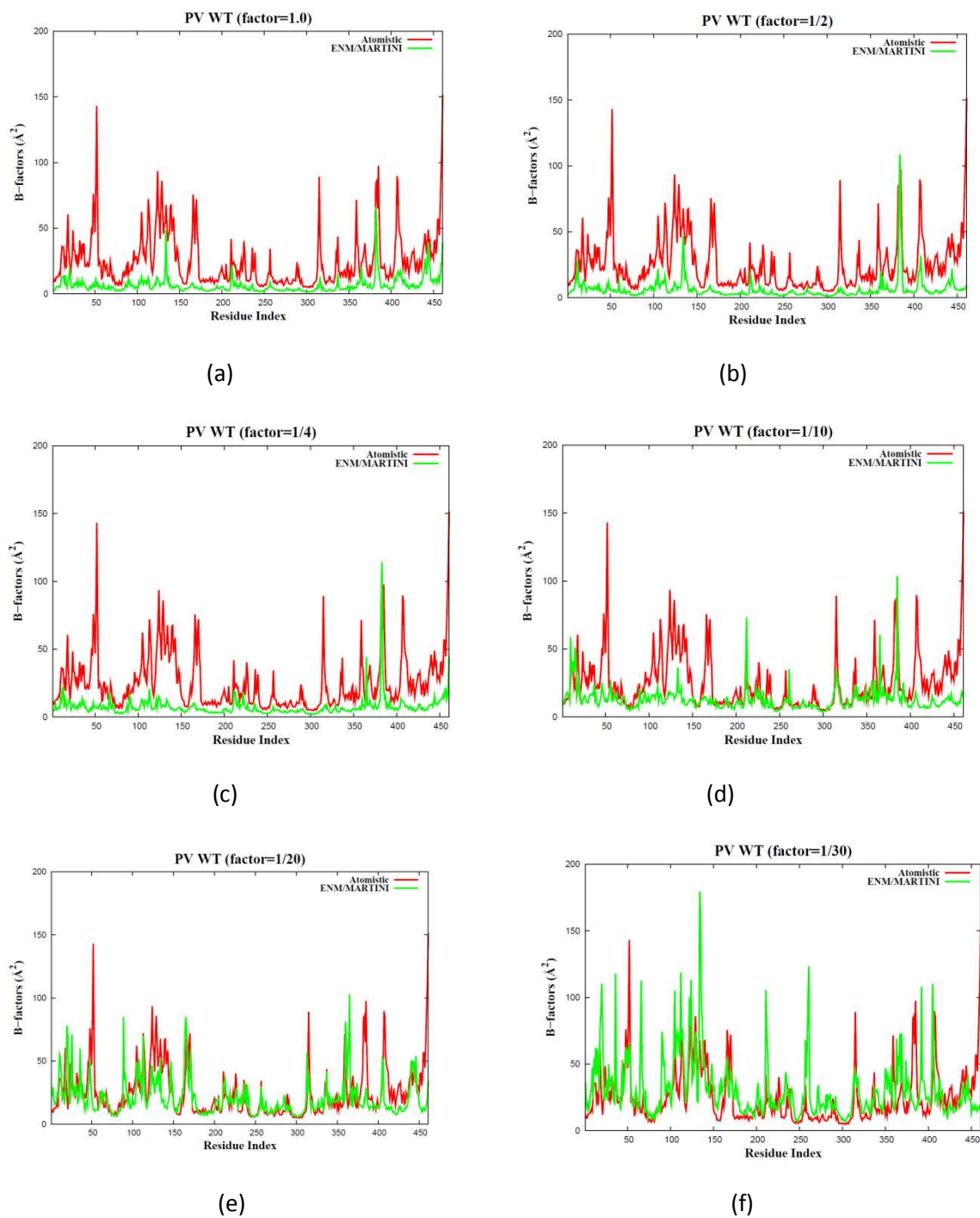
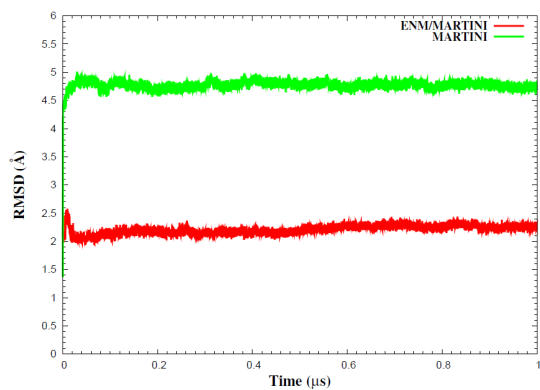
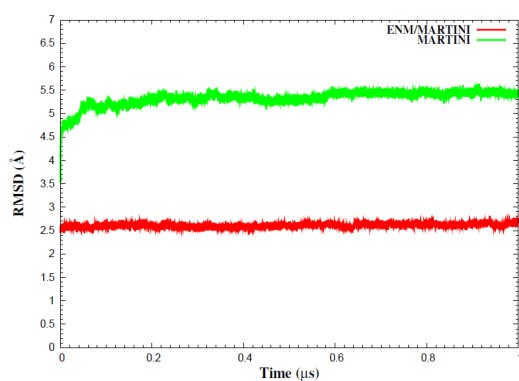


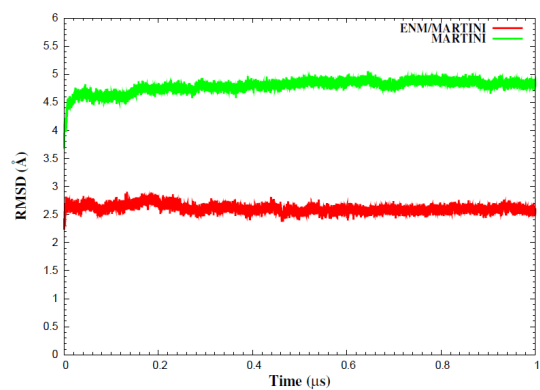
FIGURE S2. RMSD curves of the MARTINI (green) and ENM/MARTINI (red) simulations of the RdRPs from (a) PV, (b) CVB3, (c) HRV16, and (d) FMDV.



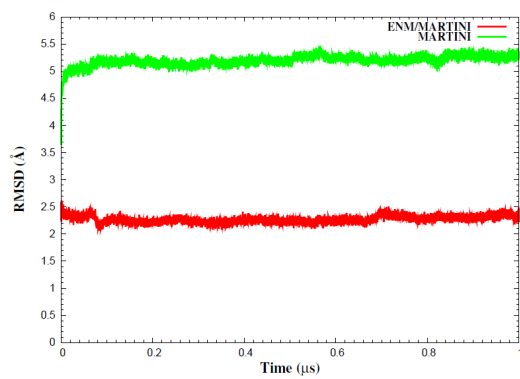
(a)



(b)



(c)



(d)

Figure S3 Radii of gyration obtained from the ENM/MARTINI simulations of the RdRPs from PV (black), CVB3 (red), HRV16 (green) and FMDV (blue).

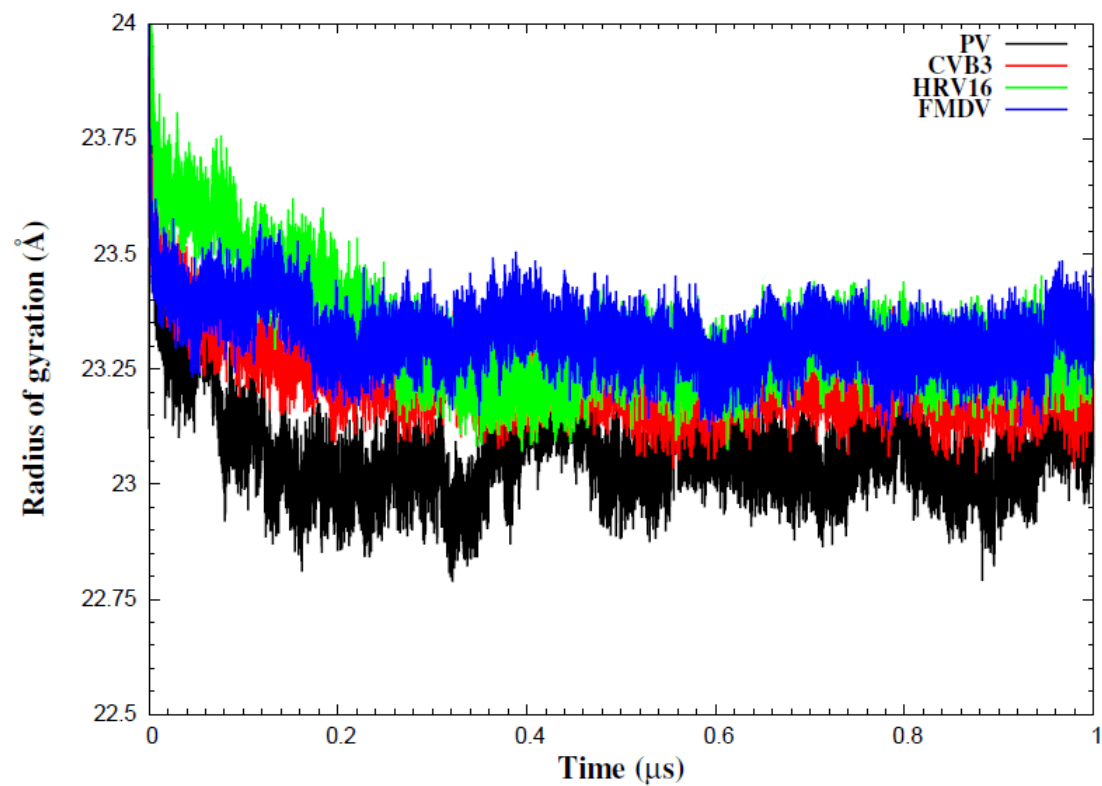
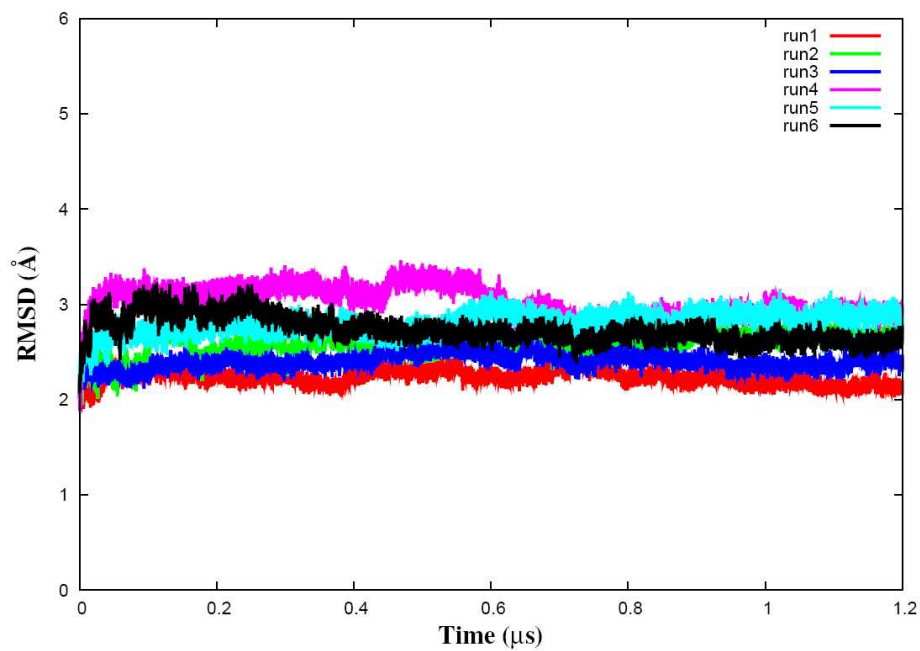
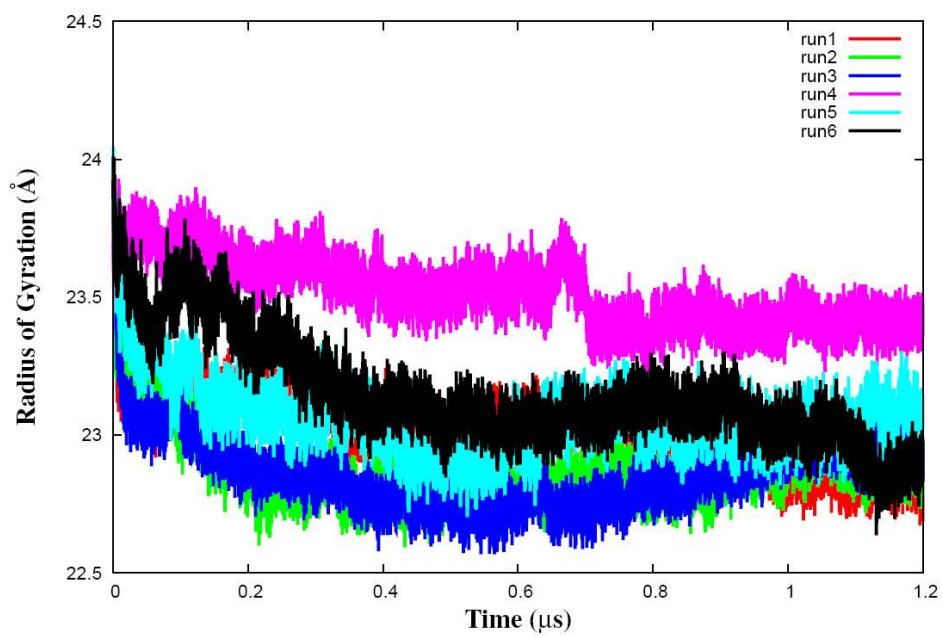


Figure S4 RMSD curves (a) and radii of gyration (b) obtained from six independent PV RdRP ENM/MARTINI simulations.



(a)



(b)