

1
2
3
4

Table A1. Stair use signage studies that met the selection criteria for inclusion in the meta-analysis showing the year of publication and the number of pre- and post -stair use observations

Study Number	Author	Year	Post-intervention		Pre-intervention	
			Number using stairs	Total number of people	Number using stairs	Total number of people
1	Brownell, Stunkard, Albaum	1980a	759	5273	332	5273
1	Brownell, Stunkard, Albaum	1980b	1981	10825	459	3960
2	Blamey, Mutrie, Aitkinson	1995	1528	8352	323	2784
3	Andersen	1998	923	13151	456	9500
4	Russell, Dzewaltowski, Ryan	1999	1269	3029	1265	3187
5	Andersen, Franckowiak, Zuzak, Cummings, Crespo	2000	975	4479	853	5287
6	Russell and Hutchinson	2000	14	91	5	64
7	Boutelle, Jeffery, Murray, Schmitz	2001	1201	9460	788	7095
8	Coleman and Gonzalez	2001a	154	3386	58	3386
8	Coleman and Gonzalez	2001b	1353	24050	964	24050
8	Coleman and Gonzalez	2001c	2824	8164	2918	8164
8	Coleman and Gonzalez	2001d	855	2788	926	2788
9	Kerr, Eves, Carroll	2001a	3266	17748	479	5916
‡10	Kerr, Eves, Carroll	2001b	239	11340	0	3780
‡11	Kerr, Eves, Carroll	2001c	262	11999	0	7993
12	Kerr, Eves, Carroll	2001d	1738	7940	1442	7042
13	Kerr, Eves, Carroll	2001e	1103	15758	1075	18056
13	Kerr, Eves, Carroll	2001f	3536	8440	3216	8440
14	Adams and White	2002	365	1770	352	1750
‡15	Marshall, Bauman, Patch, Wilson, Chen	2002	277	26392	0	39588
16	Auweele, Boen, Schapendonk, Dornez	2005	581	755	568	823
17	Houweling, Stoopendaal, Kleefstra, Meyboom-de Jong, Bilo	2005	565	891	486	891
‡18	Webb and Eves	2005	532	21732	0	10866
19	Eves and Masters	2006	8670	28901	10404	28901
‡20	Eves, Webb, Mutrie	2006	132	28901	0	3916
21	Nomura, Enopki, Okazaki, Sato	2006	2872	5620	1293	2810
22	Bungum, Meacham, Truax	2007	273	711	154	675
23	Iversen, Handel, Jensen, Frederiksen, Heitmann	2007	2876	10800	2184	10983
24	Kwak, Kremers, van Baak, Brug	2007	382	1012	223	683

Study Number	Author	Year	Post-intervention		Pre-intervention	
			Number using stairs	Total number of people	Number using stairs	Total number of people
‡25	Webb and Eves	2007a	818	28206	0	14103
26	Webb and Eves	2007b	1928	13204	350	6602
‡27	Cooley, Foley, Magnussen	2008	98	16362	0	8181
‡28	Eves, Masters, McManus, Leung, Wong, White	2008	963	61368	0	15342
29	Ford and Torok	2008	1686	6022	1459	6182
30	Olander, Eves, Puig-Ribera	2008	2833	6396	3030	7462
‡31	Eves, Olander, Nicoll, Puig-Ribera, Griffin	2009	175	20859	0	20859
‡32	Puig-Ribera and Eves	2009	320	22080	0	7360
33	Andersen	2010	834	951	555	639
34	Boen, Maurissen, Opdenacker	2010	41	351	6	359
‡35	Grimstvedt, Kerr, Oswald, Fogt, Vargas-Tonsing, Yin	2010	63	3845	0	1935
36	Müller-Riemenschneider, Nocon, Reinhold, Willich	2010	242	796	205	867
‡37	Webb and Cheng	2010	196	15341	0	5466
‡38	Lewis and Eves	2011	60	4624	0	4624
39	Moghaddam, Farahani, Shanbazi	2011	1877	9727	438	9727
40	Olander and Eves	2011	720	1368	762	1590
‡41	Ryan, Lyon, Webb, Eves, Cormac, Ryan	2011	159	12212	0	3053
42	Eves, Olander, Webb, Griffin, Chambers	2012a	7708	36187	6075	26529
‡43	Eves, Webb, Griffin, Chambers	2012b	268	21642	0	7214
‡44	Guerrero, Loughhead, Munroe-Chandler	2012	16	1327	0	1327
45	Lee, Perry, Wolf, Agarwal, Rosenblum, Fischer, Grimshaw, Wener, Silver	2012a	1313	1716	1203	1716
45	Lee, Perry, Wolf, Agarwal, Rosenblum, Fischer, Grimshaw, Wener, Silver	2012b	871	2576	647	2576
45	Lee, Perry, Wolf, Agarwal, Rosenblum, Fischer, Grimshaw, Wener, Silver	2012c	375	2157	280	2157
46	Lewis and Eves	2012a	3403	5662	2746	4623
‡47	Lewis and Eves	2012b	313	29217	0	19478
‡48	Lewis and Eves	2012c	42	4217	0	4217
49	Chhay	2013	1631	2961	1315	2406

Study Number	Author	Year	Post-intervention		Pre-intervention	
			Number using stairs	Total number of people	Number using stairs	Total number of people
‡50	Eckhardt, Kerr, Taylor	2014	27	1677	0	1320

‡ Studies were excluded in the sensitivity analysis

5
6
7

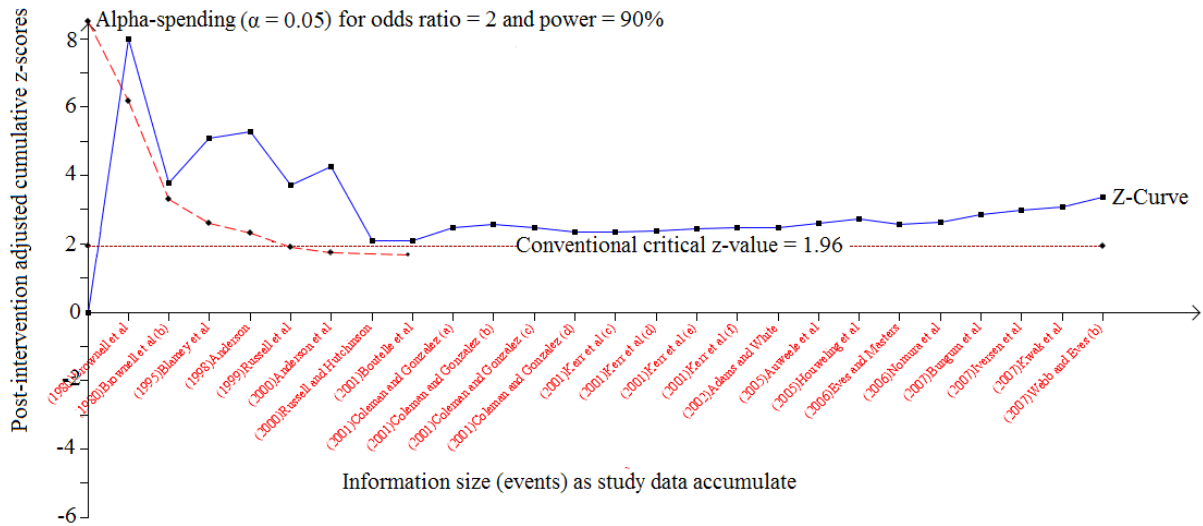


Figure A1. Sensitivity trial sequential analysis showing the effects of stairs signage interventions published from 1980 to 2007 following the removal of studies with extreme odds ratio (≥ 7), with heterogeneity and multiple testing adjusted.

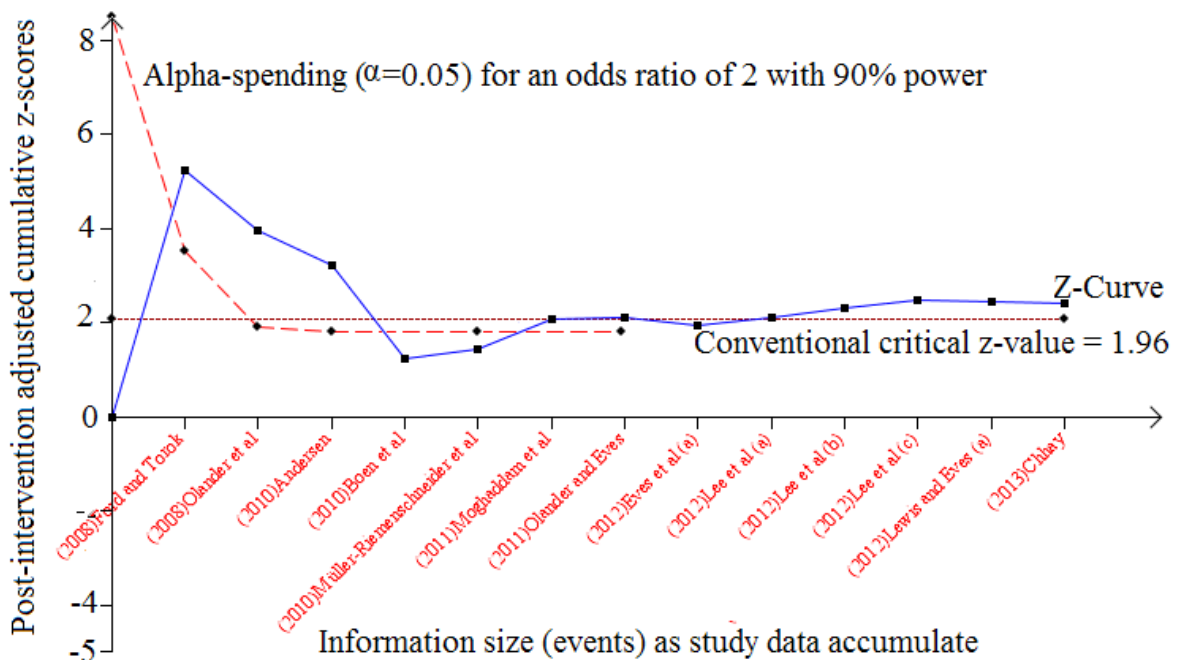


Figure A2. Sensitivity trial sequential analysis showing the effects of stairs signage interventions published from 2008 to 2014 following the removal of studies with extreme odds ratio (≥ 7), with heterogeneity and multiple testing adjusted. Note the false evidence for the first three years when the Z-curve is below the alpha-spending function.