

RNA sequencing reveals a transcriptomic portrait of human mesenchymal stem cells from bone marrow, adipose tissue, and palatine tonsils.

Kyung-Ah Cho¹, Minhwa Park¹, Yu-Hee Kim¹, So-Youn Woo¹, and Kyung-Ha Ryu^{2,*}

¹Department of Microbiology, College of Medicine, Ewha Womans University, Seoul 07985, Republic of Korea

²Department of Pediatrics, College of Medicine, Ewha Womans University, Seoul 07985, Republic of Korea

*Corresponding author:

Kyung-Ha Ryu, MD, PhD

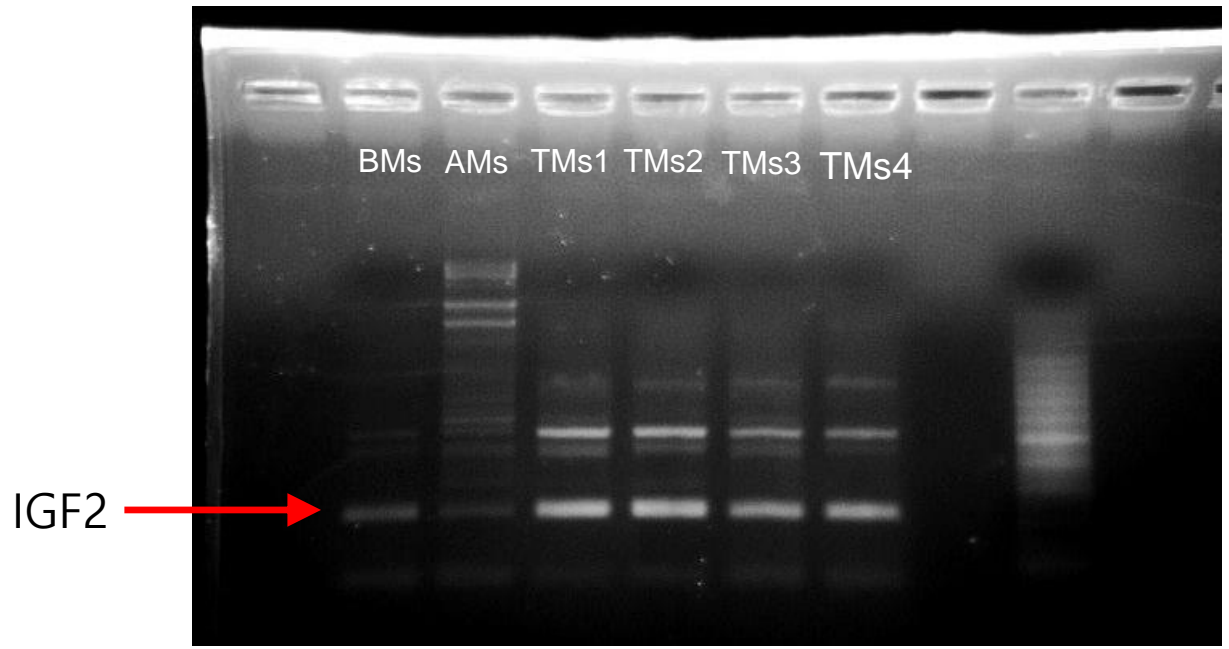
Department of Pediatrics, College of Medicine, Ewha Womans University, Seoul 07985, Republic of Korea

Tel: 82-2-2650-5500

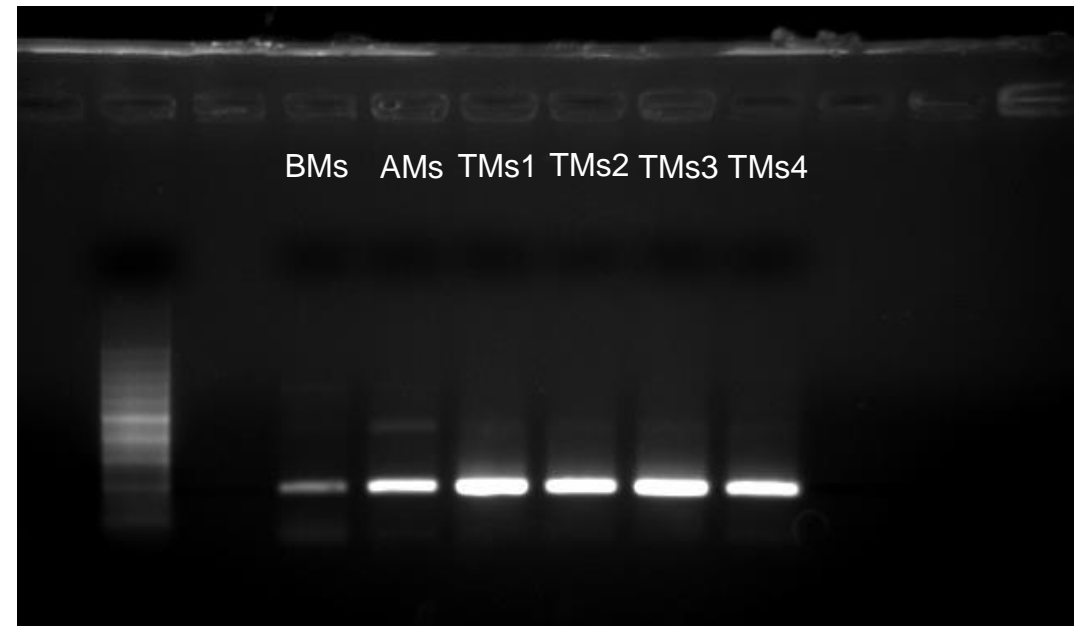
Fax: 82-2-2653-3718

E-mail address: ykh@ewha.ac.kr

IGF2



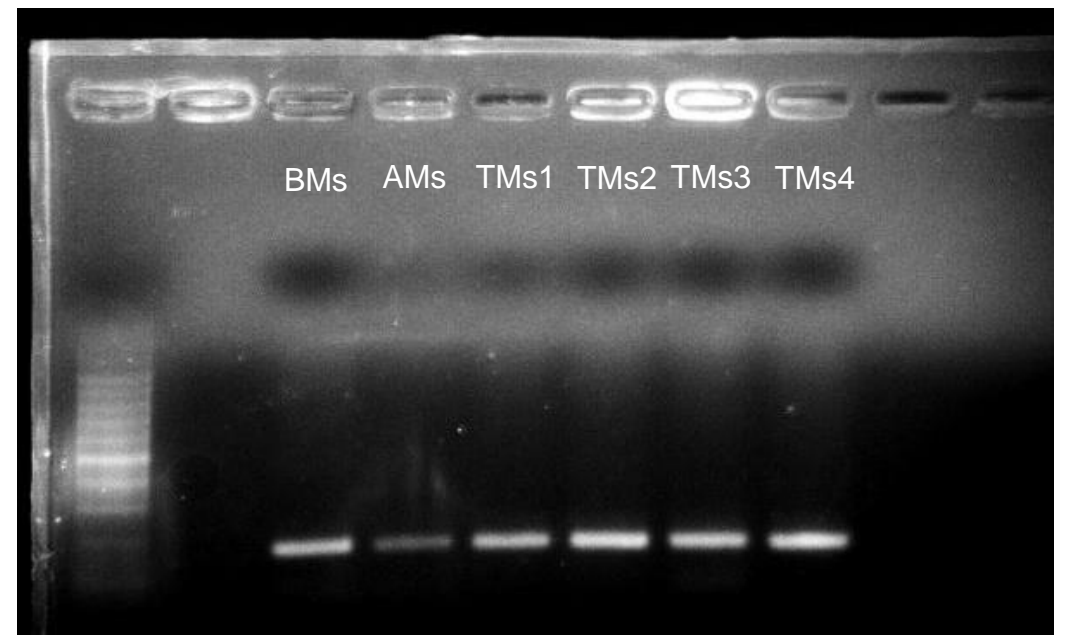
MMP1



TNFRSF11B



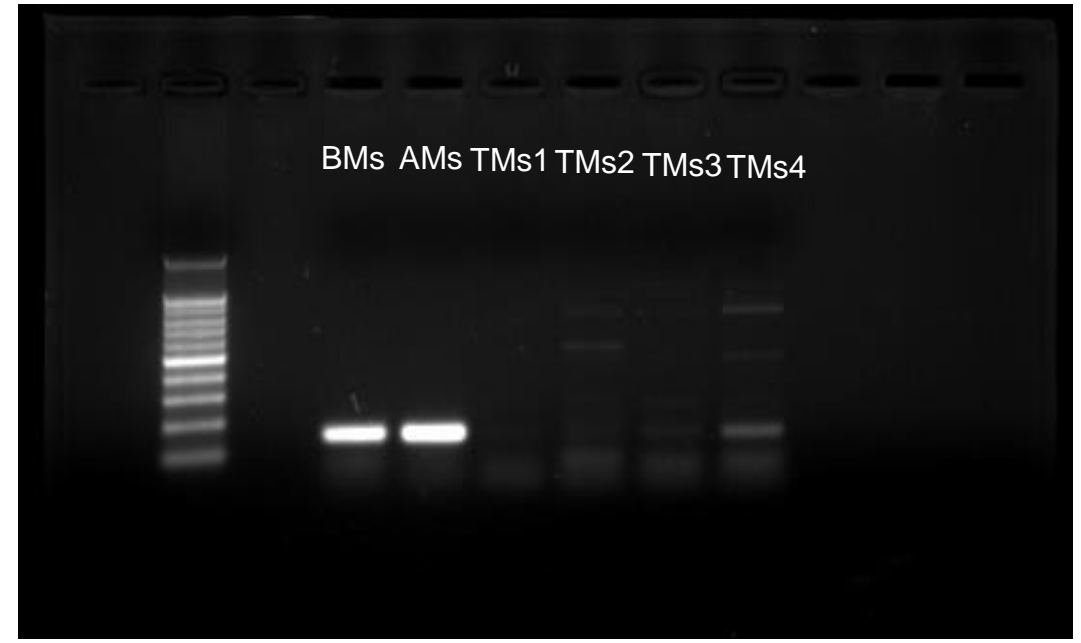
PSG1



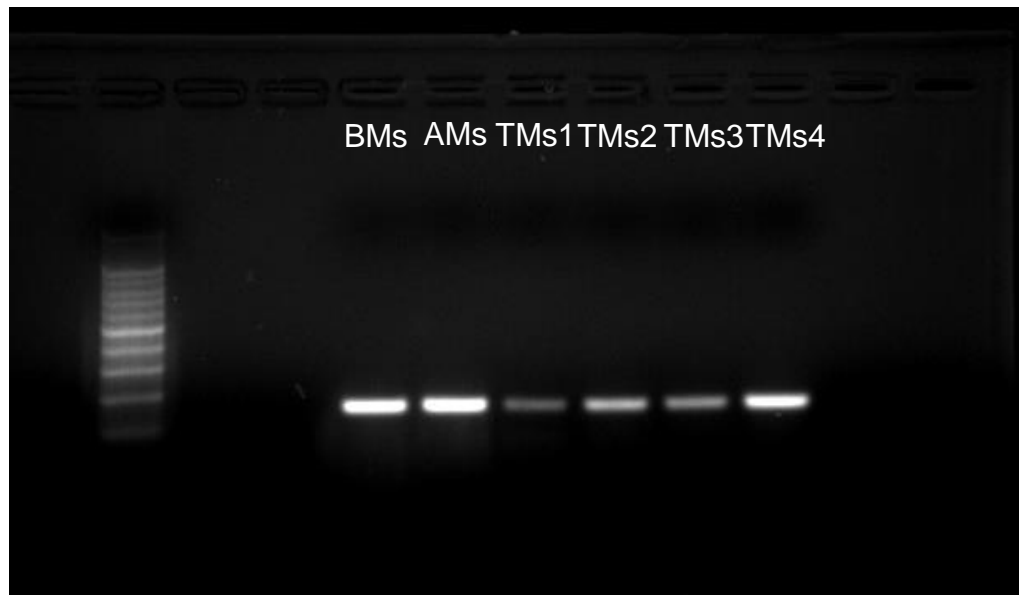
GPC3



COL11A1



ITGA11



GAPDH

