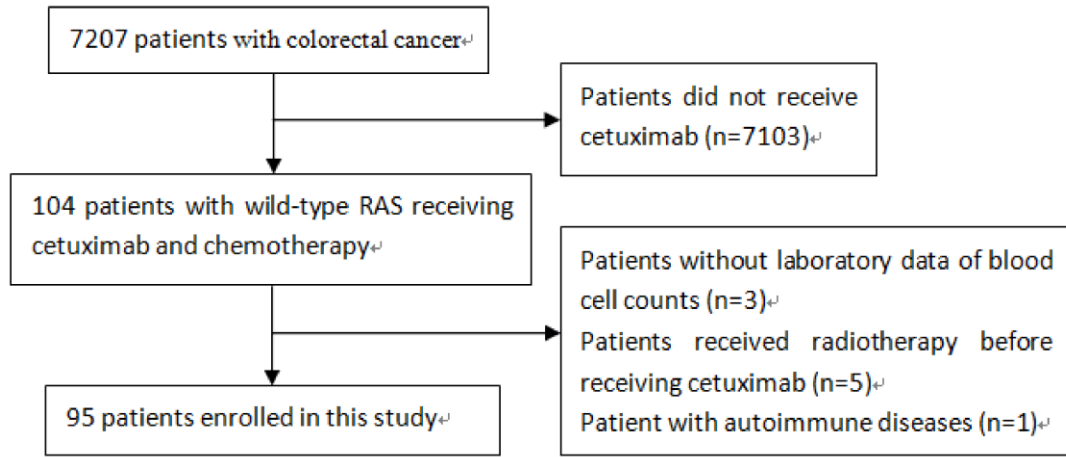
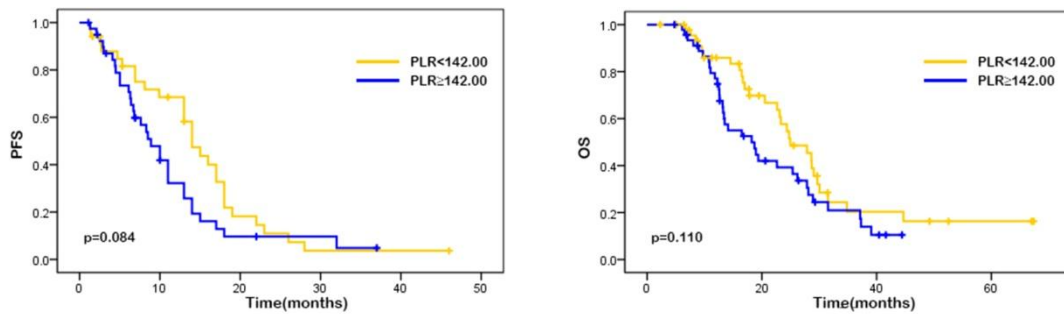


# Pre-treatment inflammatory indexes as predictors of survival and cetuximab efficacy in metastatic colorectal cancer patients with wild-type RAS

Jing Yang, Xinli Guo, Manni Wang, Xuelei Ma, Xiaoyang Ye and Panpan Lin



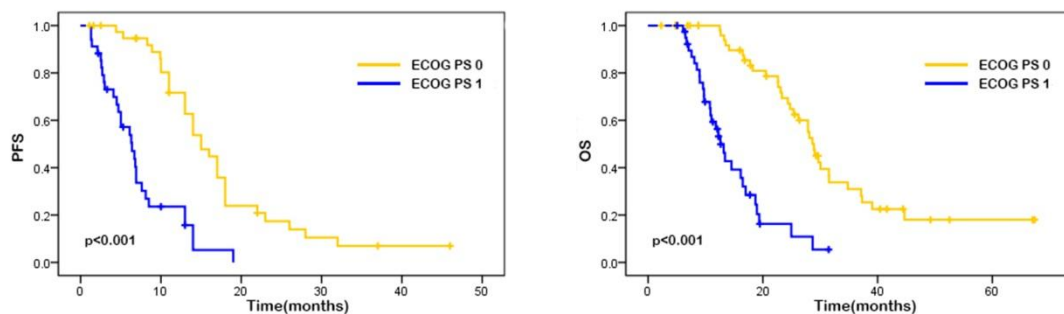
Supplementary figure 1: Selection process of the patients.



Supplementary figure 2: Kaplan–Meier curves of PFS (a) and OS (b) based on pre-treatment

platelet-to-lymphocyte ratio (PLR). PLR was not significantly associated with PFS ( $p=0.084$ ) and OS

( $p=0.110$ ).



Supplementary figure 3: Kaplan–Meier curves of PFS (a) and OS (b) based on pre-treatment ECOG performance status. ECOG performance status of 0 was associated with significantly better PFS ( $p<0.001$ ) and OS ( $p<0.001$ ).