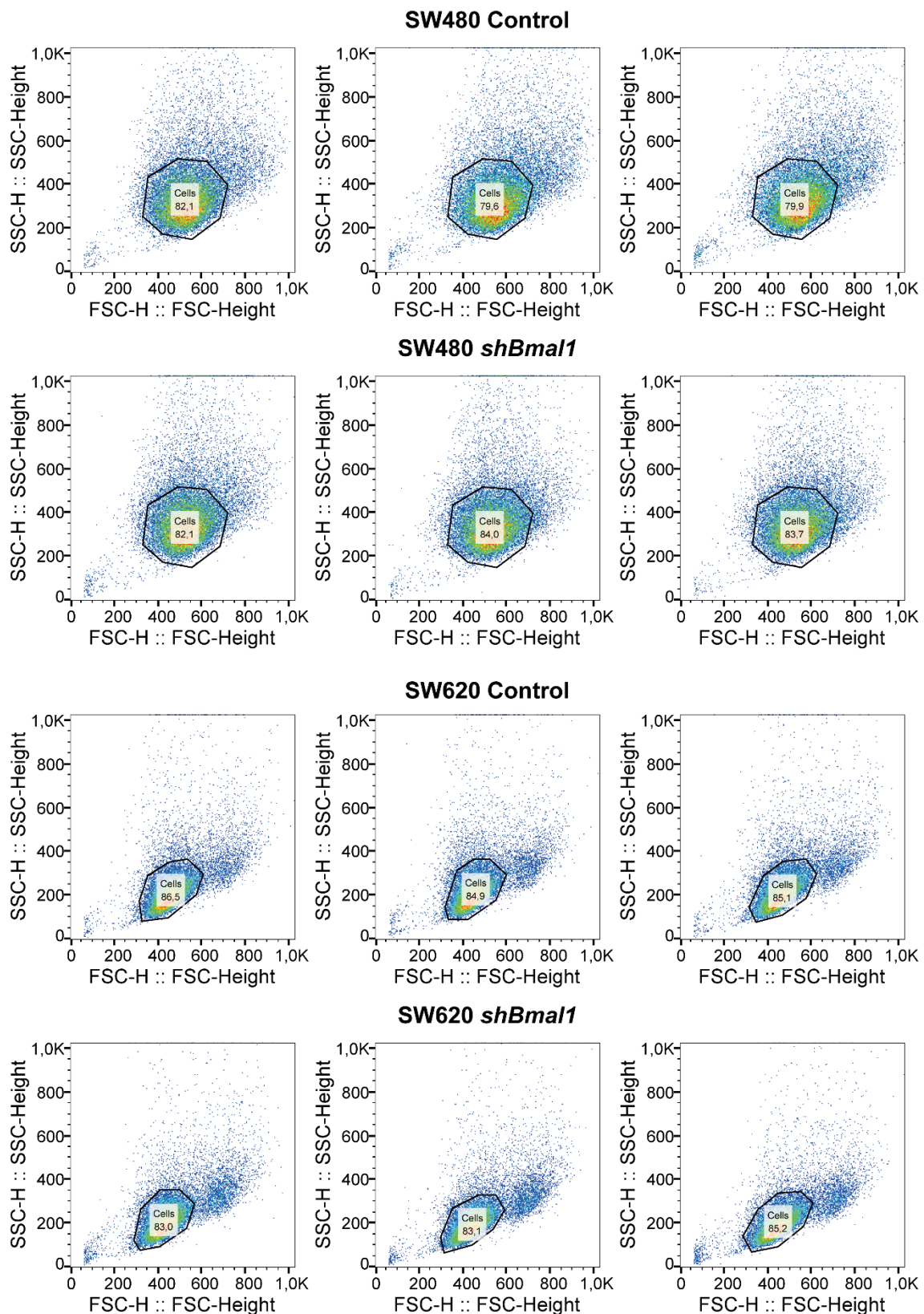
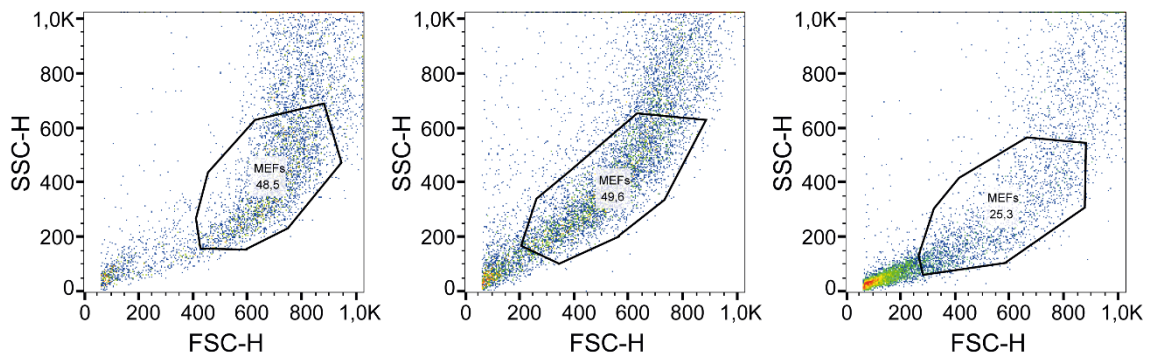


Supporting Information S4 Text – Gating strategies for the FACS analysis

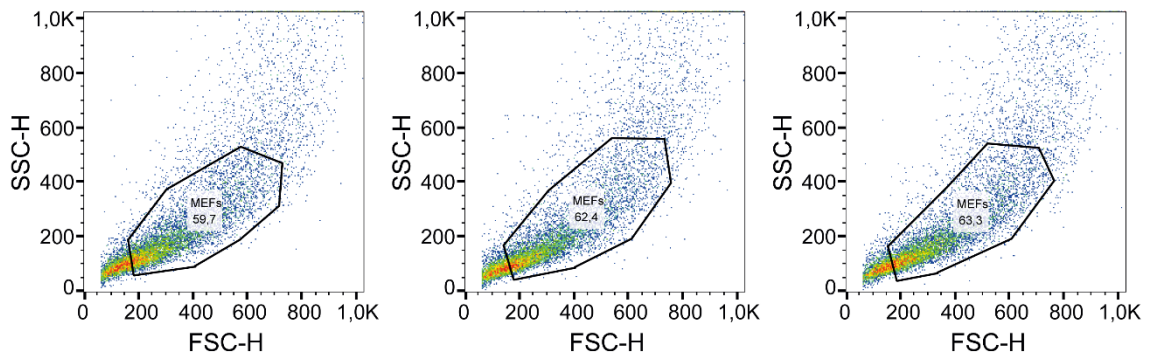
The cells of interest were gated based on forward scatter/side scatter (FSC vs. SSC) values. The cell cycle analysis was conducted by fitting a univariate cell cycle model to the previously gated population using the Watson pragmatic algorithm as implemented in FlowJo v10.2 (FlowJo LLC).



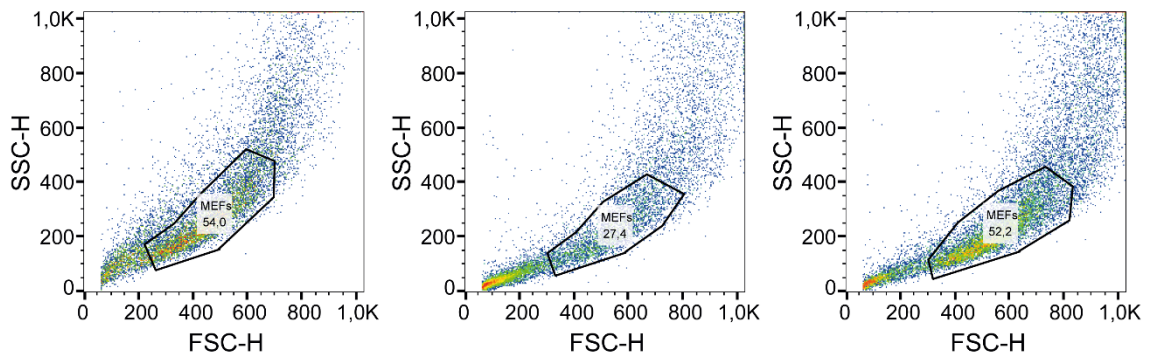
Ink4a/Arf^{+/+} MEFs



Ink4a/Arf^{+/+}+RAS MEFs



Ink4a/Arf^{-/-} MEFs



Ink4a/Arf^{-/-}+RAS MEFs

