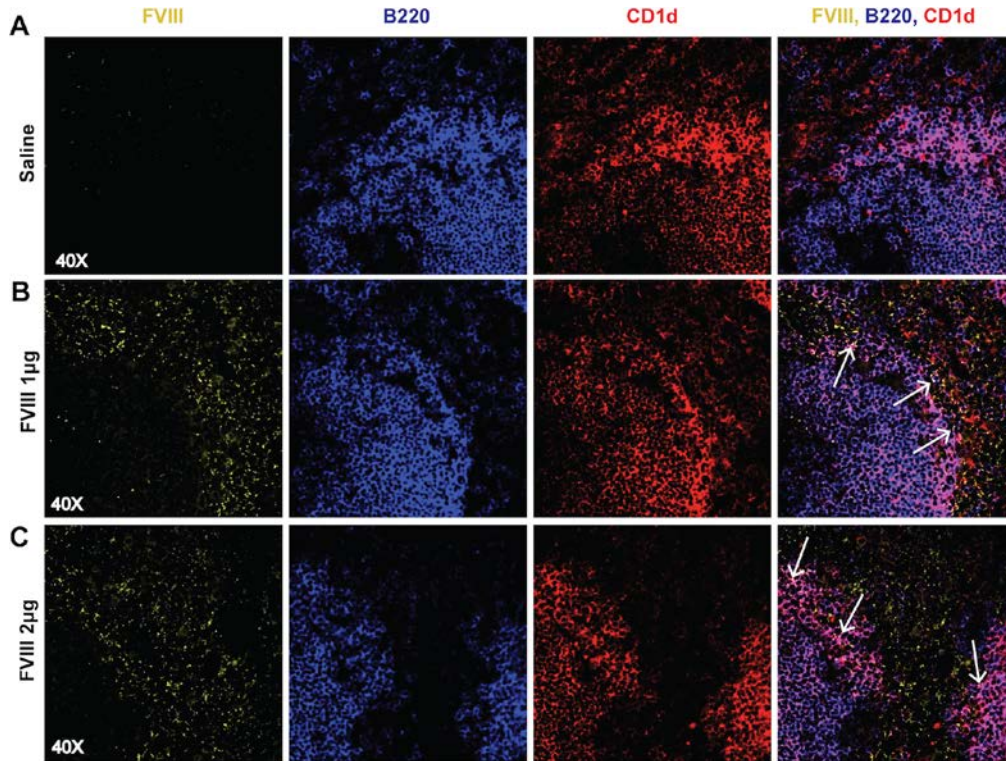


Zerra *et al.* Supplemental Figure 1



Supplemental Figure 1: FVIII localizes in the marginal sinus of the spleen with MZ B cells. FVIII deficient mice were injected with saline **(A)**, 1 µg FVIII **(B)**, or 2 µg FVIII **(C)**, followed by splenic harvest 15 minutes post injection. Frozen spleen sections were stained with polyclonal sheep anti-FVIII-FITC (yellow), B220-PE-CF594 (blue), and CD1d-PE (red). Images were obtained using the Leica SP8 multiphoton confocal microscope and are shown at 40x magnification. Arrows indicate co-localization of FVIII and CD1d (MZ B cells).