

SUPPLEMENTAL MATERIAL

Supplemental Figure Legends:

Figure S1. Basic characteristic of mice. (A) weight of mice. **(B)** systolic blood pressure.

Data are mean±SD; n=10 per group. * $p < 0.05$ vs Control.

Figure S2. Change of PHD3 expression in vivo and vitro by lentivirus transfection

(A) Western blot analysis of PHD3 protein level relative to that of β -actin (a1) and quantitative analysis(a2) in vivo. **(B)** Representative photograph of GFP-labeled scramble transfection efficiency in HUVECs by fluorescence microscopy; the transfection efficiency was evaluated at more than 90% (original magnification $\times 100$ bar=50 μ m). **(C)** Western blot analysis of PHD3 protein level relative to that of β -actin (c1) and quantitative analysis(c2) in vitro. Data are mean±SD; n=10 per group. * $p < 0.05$ vs shNC or # $p < 0.05$ vs LvNC.

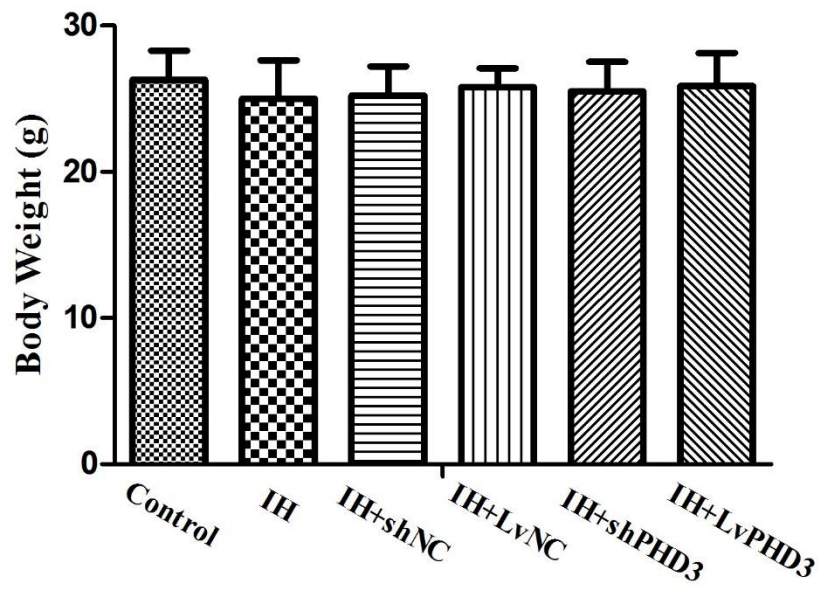
Figure S3. Masson and collagen I III staining in myocardium region Representative

images of the heart section with Masson's trichrome (blue staining), and immunohistochemical staining of collagen I collagen III (yellow staining) for each group. (original magnification $\times 400$ bars=20 μ m).

Figure S4. PHD3 overexpression improve IH-induced EndMT. Representative images of immunohistochemical staining of α -SMA (yellow staining) in the perivascular and vascular region. The presence of α -SMA is detected in endothelial cells (red arrows)(original magnification $\times 400$ bars=20 μ m).

Figure S1.

A



B

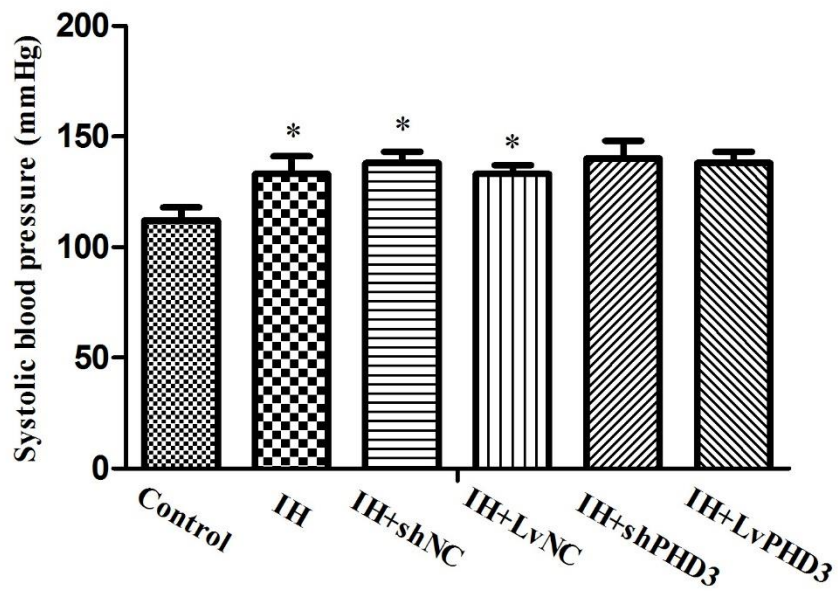


Figure S2.

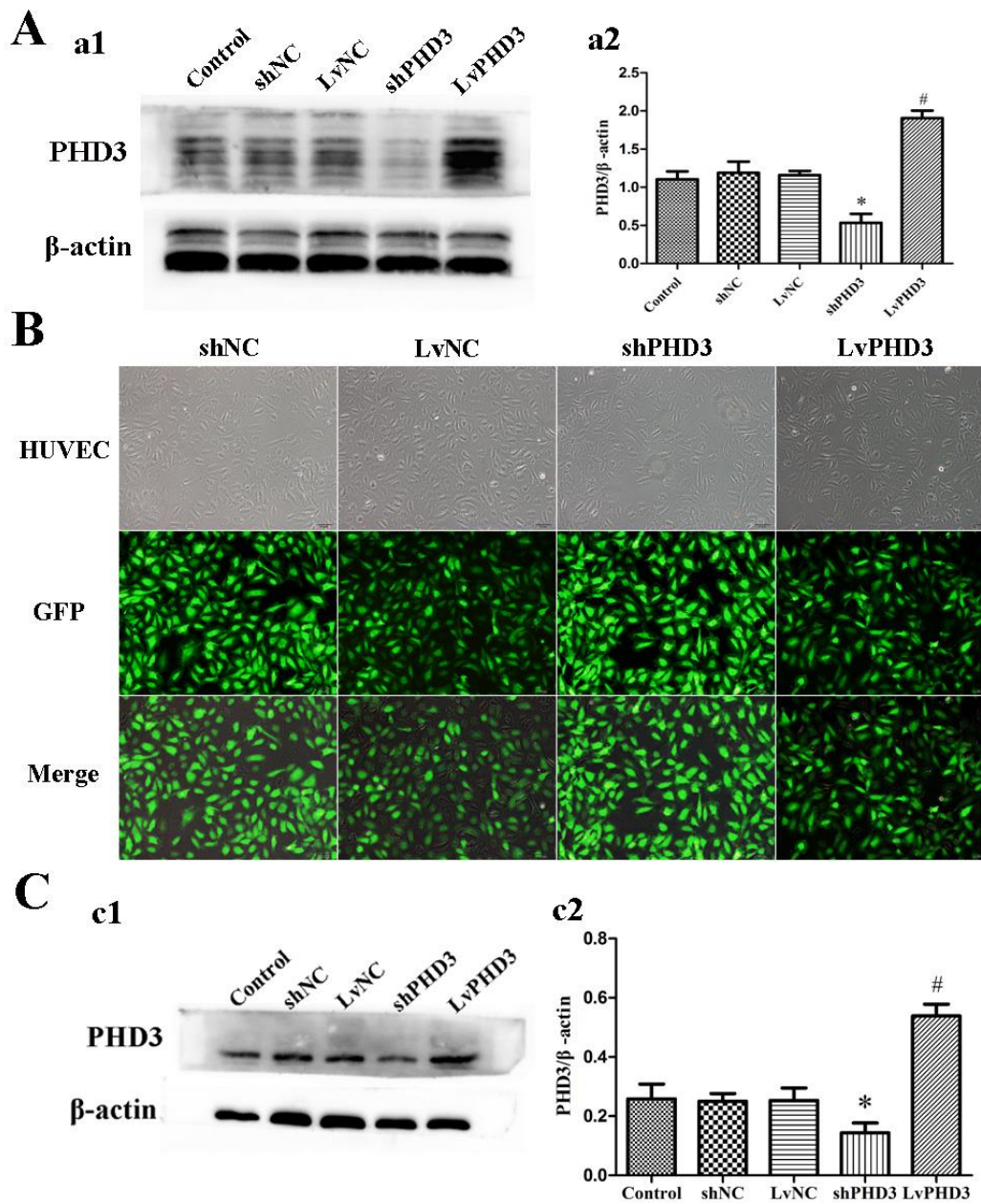


Figure S3.

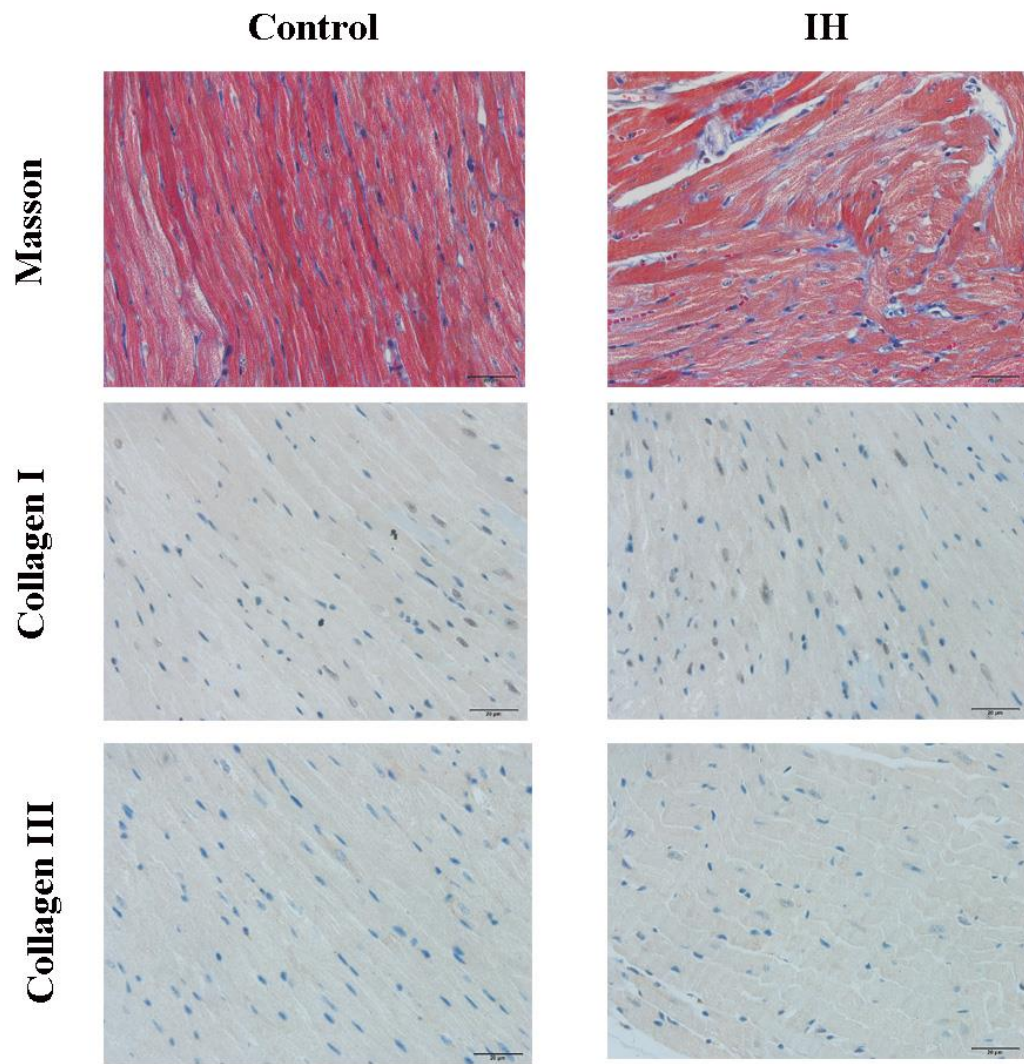


Figure S4.

