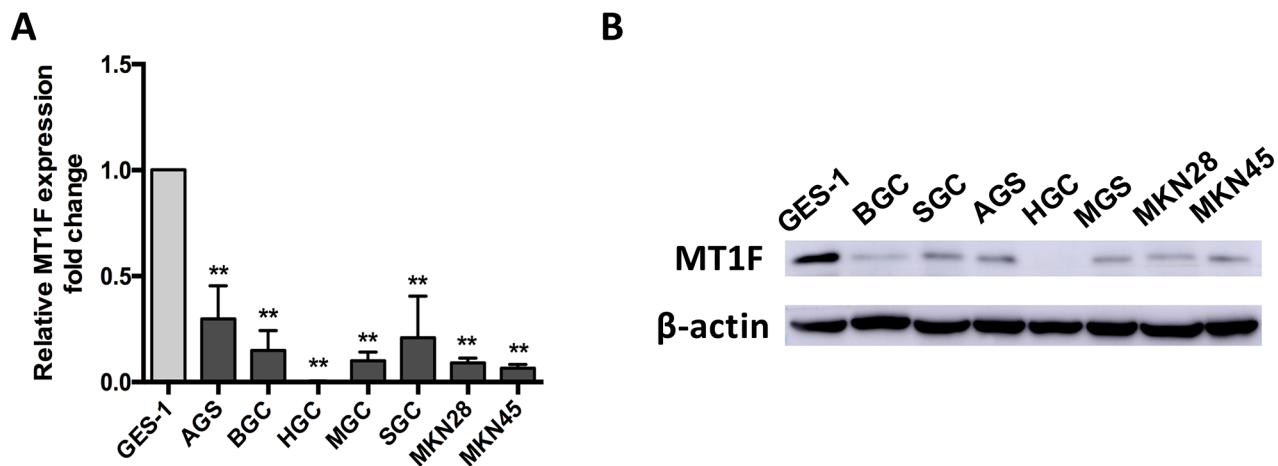


Decreased long non-coding RNA MTM contributes to gastric cancer cell migration and invasion via modulating MT1F

SUPPLEMENTARY MATERIALS



Supplementary Figure 1: MT1F expression is down regulated in human gastric cancer (GC) cell lines. (A) Expression of MT1F mRNA in 7 GC cell lines and GES-1. Expression levels are normalized to GES-1. Data were presented as the mean \pm SD (n=3, **P<0.01). (B) The protein expression level of MT1F in 7 GC cell lines and GES-1.

Supplementary Table 1: The sequences of the primers used in the study

| Primers | Sequence, 5'–3' |
|--|--|
| Primers for qRT-PCR: | |
| MTM-1F | CTCCAGCCTCACCTGATCTC |
| MTM-1R | AGCTGCACTTCTCCAATGC |
| MT1A-F | GGGCATCAGAGAAGTGACAG |
| MT1A-R | ATGGGTCAAGGTTGTATGGA |
| MT1B-F | GAAGTCCAGGCTTGTCTTGG |
| MT1B-R | GGTACATTTGCACTCTTTGCAC |
| MT1E-F | CTGCTTGTTCGTCTCACTGG |
| MT1E-R | GCATTTGCACTCTTTGCACT |
| MT1F-F | GACTGATGCCAGGACAACCT |
| MT1F-R | AGGAATGTAGCAAATGGGTCA |
| MT1X-F | GGAACTCCTGCTTCTCCTT |
| MT1X-R | GCATTTGCACTCTTTGCATT |
| MT2A-F | GACTCTAGCCGCCTCTTCAG |
| MT2A-R | GCATTTGCACTCTTTGCATT |
| GAPDH-F | GAAGGTGAAGGTCGGAGT |
| GAPDH-R | GAAGATGGTGATGGGATTC |
| snRNA U6-F | CTCGCTTCGGCAGCACA |
| snRNA U6-R | ATTTA TTTAT GGGGA TTTGG GTTT |
| MMP2-F | ACGACCGCGACAAGAAGTAT |
| MMP2-R | ATTTGTTGCCAGGAAAGTG |
| MMP7-F | GTCTCTGGACGGCAGCTATG |
| MMP7-R | GAGCCTGTTCCCACTGTAGC |
| MMP9-F | TCGAACTTTGACAGCGACAAG |
| MMP9-R | GCACTGAGGAATGATCTAAGC |
| MMP14-F | GGCGGGTGAGGAATAAC |
| MMP14-R | AGCATCAATCTTGTCGGTAG |
| Primers for full-length: product: | |
| MTM-2F | CGGGATCCCCTGTGGCTTAGGAACTC |
| MTM-2R | CGGAATTCAAGCCAACAATGTTTATTATC |
| MT1F-F | ACGGGCCCTCTAGACTCGAGCGCCAC CATGGACCCCACTGCTCCTGCGCCGC |
| MT1F-R | TTAAACTTAAGCTTGGTACCTCAGTCGC AGCAGCTGCACTTC |

-F: forward primer, -R: reverse primer.