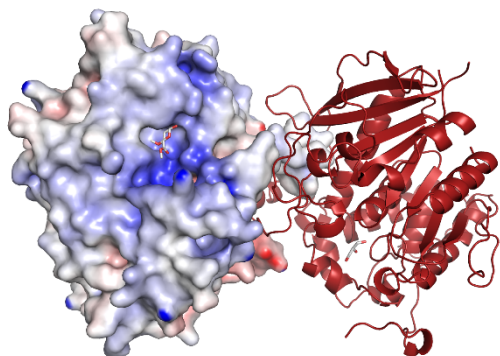
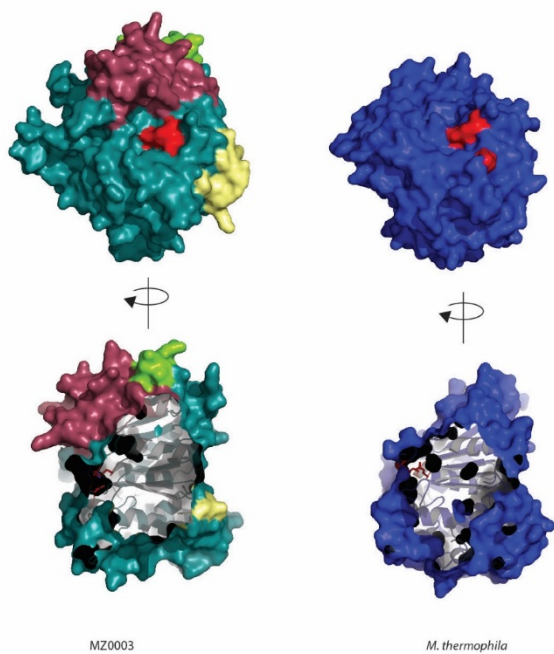


Supplementary files accompanying manuscript '*Structural insight into a CE15 esterase from the marine bacterial metagenome*'

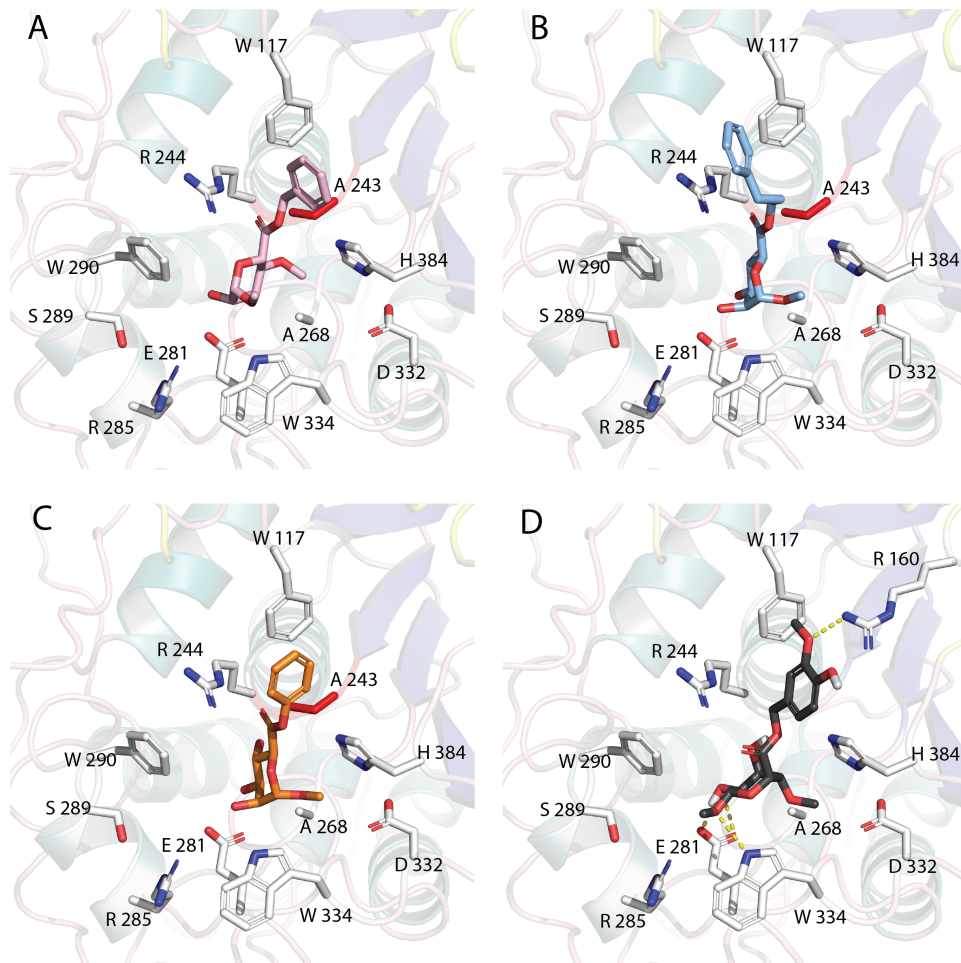
Concetta De Santi, Osman Gani, Ronny Helland, Adele Williamson



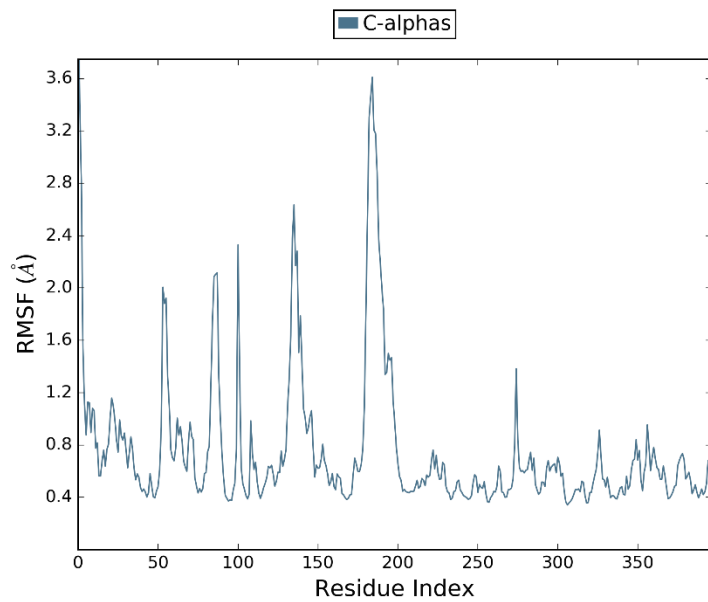
**Supplementary figure 1.** Dimer of MZ0003 generated based on crystallographic symmetry



**Supplementary figure 2.** Surface view of MZ0003 and 4g4g indicating insert regions.



**Supplementary figure 3.** Binding poses for MZ0003 S243A docked with (A) Benzyl (methyl 4-*O*-methyl- $\alpha$ -D-glucopyranoside) urinate, (B) Phenyl (methyl  $\alpha$ -D-glucopyranoside) uronate, (C) Phenylpropyl (methyl  $\alpha$ -D-glucopyranoside) uronate and (D) methoxy and hydroxylated Benzyl (methyl  $\alpha$ -D-glucopyranoside) uronate



**Supplementary figure 4.** Protein RMSD of MZ0003 S244A with methyl 4-*O*-methyl-D-glucopyranuronate docked in 0.5M NaCl.