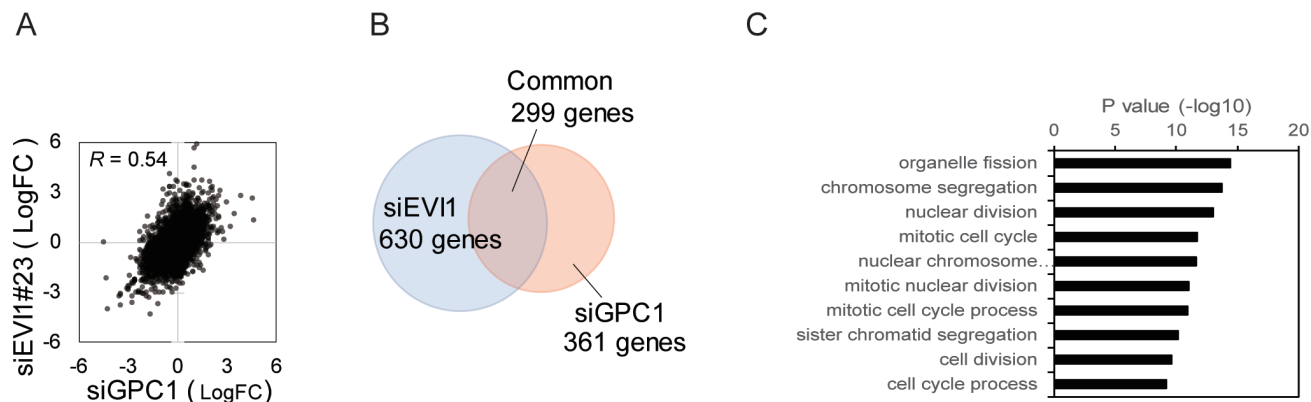


# EVI1 modulates oncogenic role of GPC1 in pancreatic carcinogenesis

## SUPPLEMENTARY MATERIALS



**Supplementary Figure 1:** (A) Scatter plot showing all gene expression changes (LogFC) by siGPC1 (x-axis) and siEVI1 (y-axis) in PK-45H cell lines. (B) Venn diagram showing genes significantly downregulated in siGPC1 group (red circle, FC < -2, 660 genes) and siEVI1 group (blue circle, FC < -2, 929 genes). (C) Gene ontology analysis of common 299 genes which were downregulated both in siGPC1 group and siEVI1 group in PK-45H cell lines. Significant GO terms and their P values are shown by a bar graph.