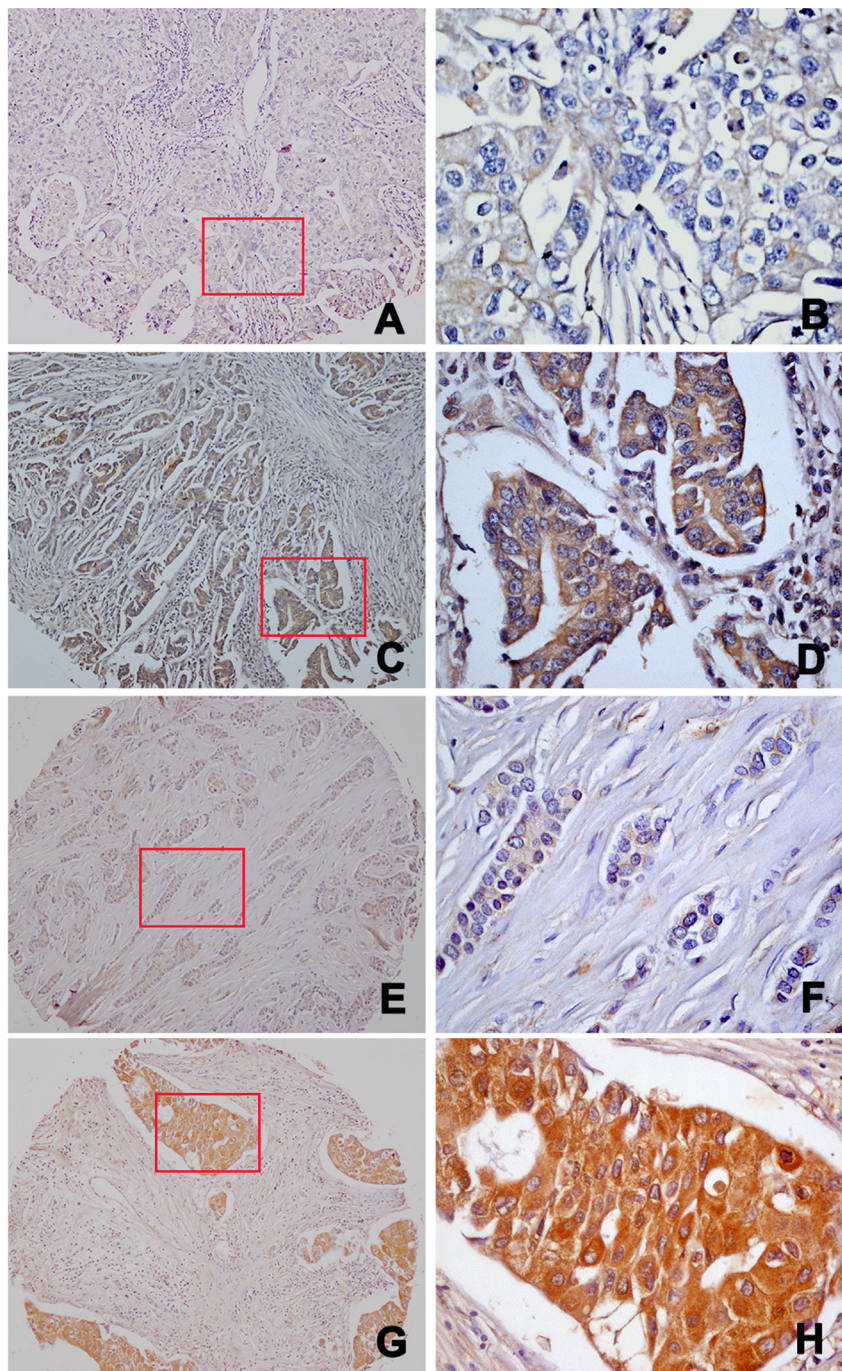
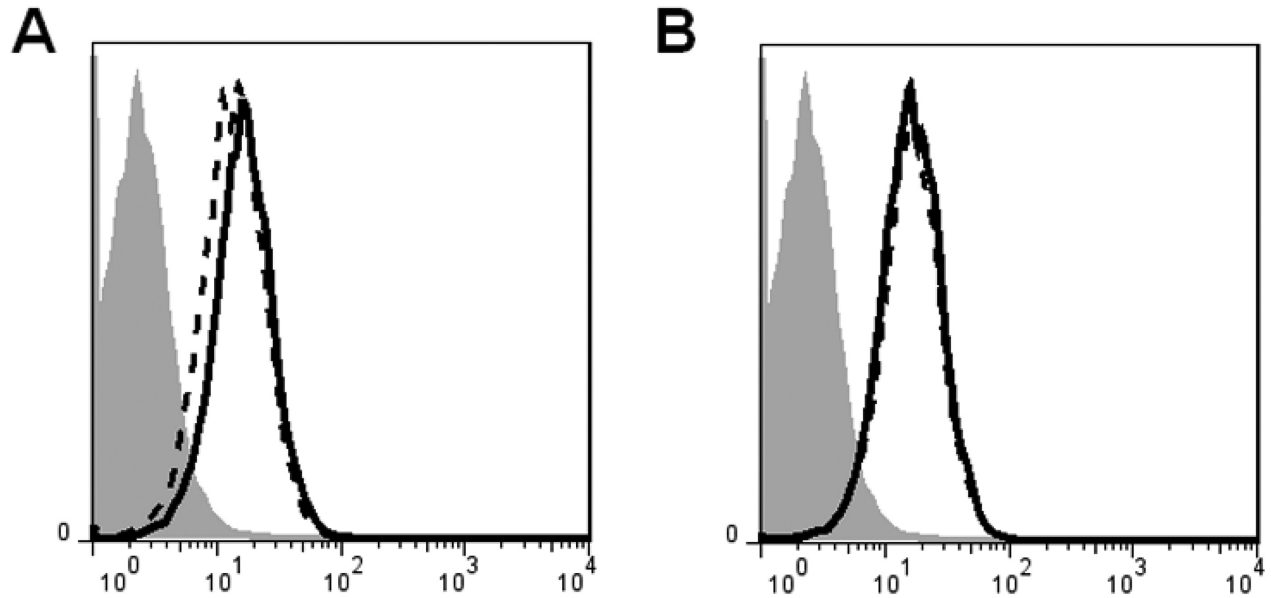


PD-1/PD-L1 interaction up-regulates MDR1/P-gp expression in breast cancer cells via PI3K/AKT and MAPK/ERK pathways

SUPPLEMENTARY MATERIALS



Supplementary Figure 1: Expression of PD-L1 and MDR1/P-gp in breast cancer tissues. (A) Low expression of PD-L1 ($\times 100$). (B) Low expression of PD-L1 ($\times 400$). (C) High expression of PD-L1 ($\times 100$). (D) High expression of PD-L1 ($\times 400$). (E) Low expression of MDR1/P-gp ($\times 100$). (F) Low expression of MDR1/P-gp ($\times 400$). (G) High expression of MDR1/P-gp ($\times 100$). (H) High expression of MDR1/P-gp ($\times 400$).



Supplementary Figure 2: PD-L1 expression of MDA-MB-231 after treatment with LY294002 and PD98059. (A) PD-L1 expression of MDA-MB-231 after treatment with LY294002. (B) PD-L1 expression of MDA-MB-231 after treatment with PD98059. The shaded histograms indicate staining with PE-labeled isotype control IgG, the solid histograms indicate staining with PE-labeled anti-PD-L1 antibody, and the dashed histograms indicate inhibitors treated cells staining with PE-labeled anti-PD-L1 antibody.