

# **High-fat diet-induced obesity impairs insulin signaling in lungs of allergen-challenged mice: Improvement by resveratrol**

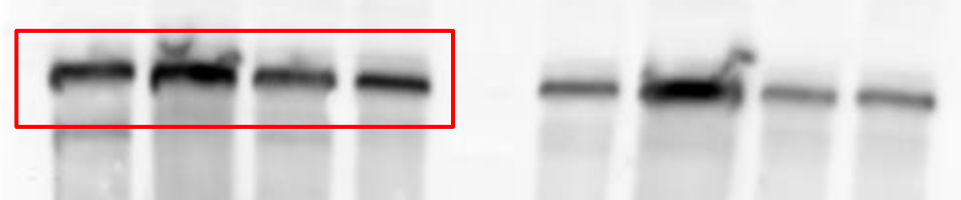
Diana M. André, Marina C. Calixto, Carolina Sollon, Eduardo C. Alexandre, Edith B. G. Tavares, Ana C. A. Naime, Gabriel F. Anhê & Edson Antunes

Department of Pharmacology, Faculty of Medical Sciences, University of Campinas (UNICAMP), Campinas, São Paulo, Brazil

**Supplementary Figure S1:** Length gels relative to Fig 1A, B and C. Red boxes indicate the cropping lines used to generate the figures.

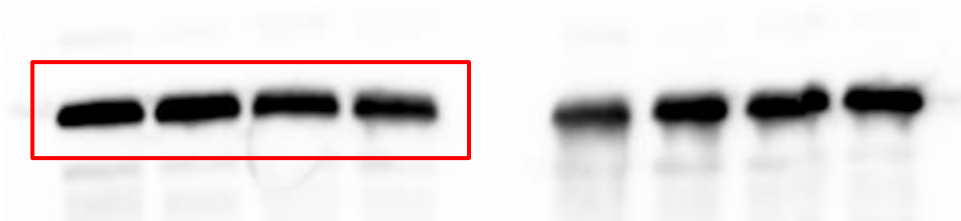
A.

p- AKT



60kDa

$\beta$ -actin

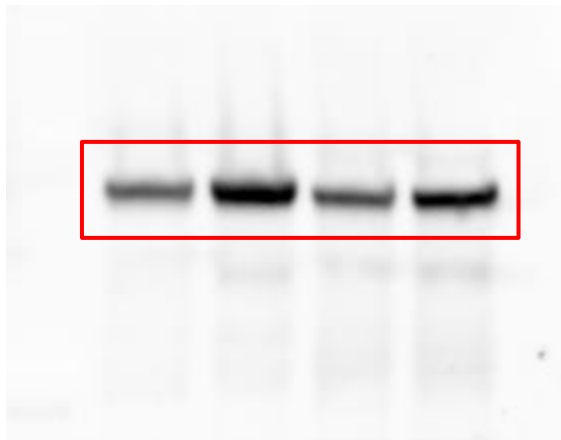


42kDa

# Supplementary Figure S1

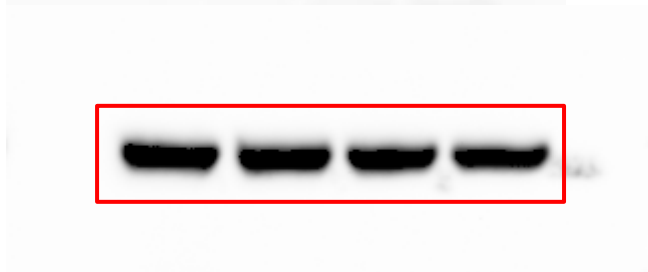
B.

p- AKT



60kDa

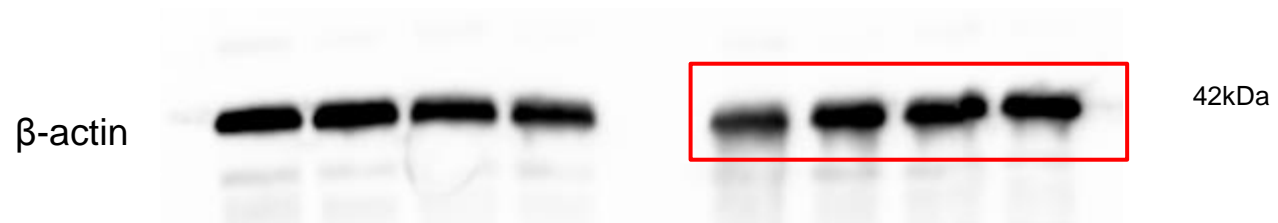
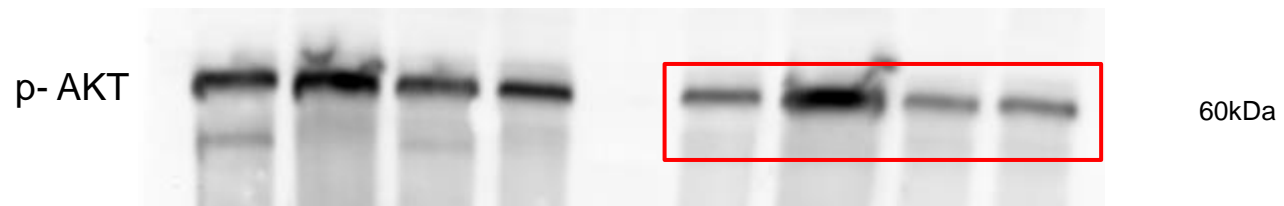
$\beta$ -actin



42kDa

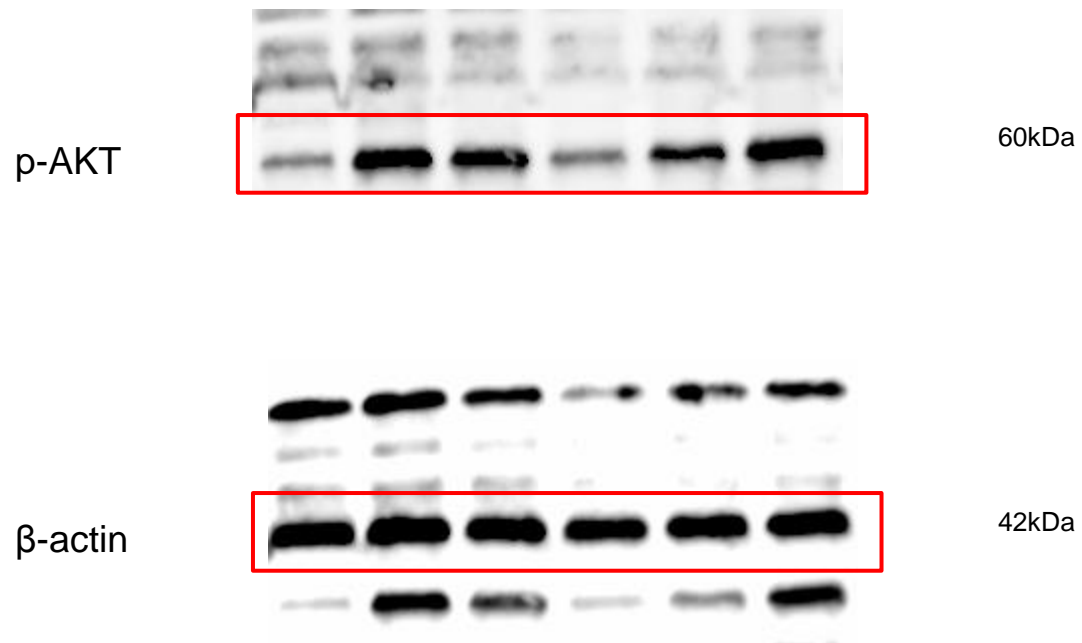
# Supplementary Figure S1

C.



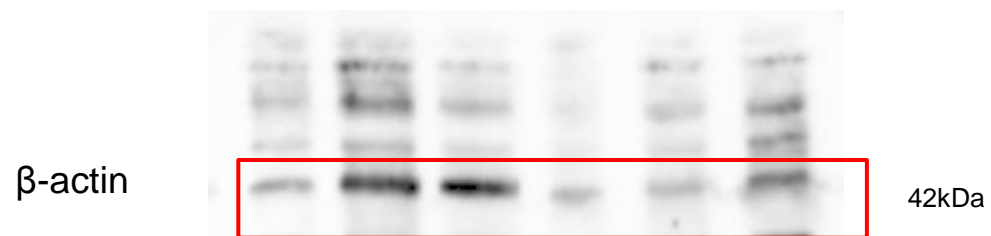
**Supplementary Figure S2:** Length gels relative to Fig 2A, B, C and D. Red boxes indicate the cropping lines used to generate the figures.

A.



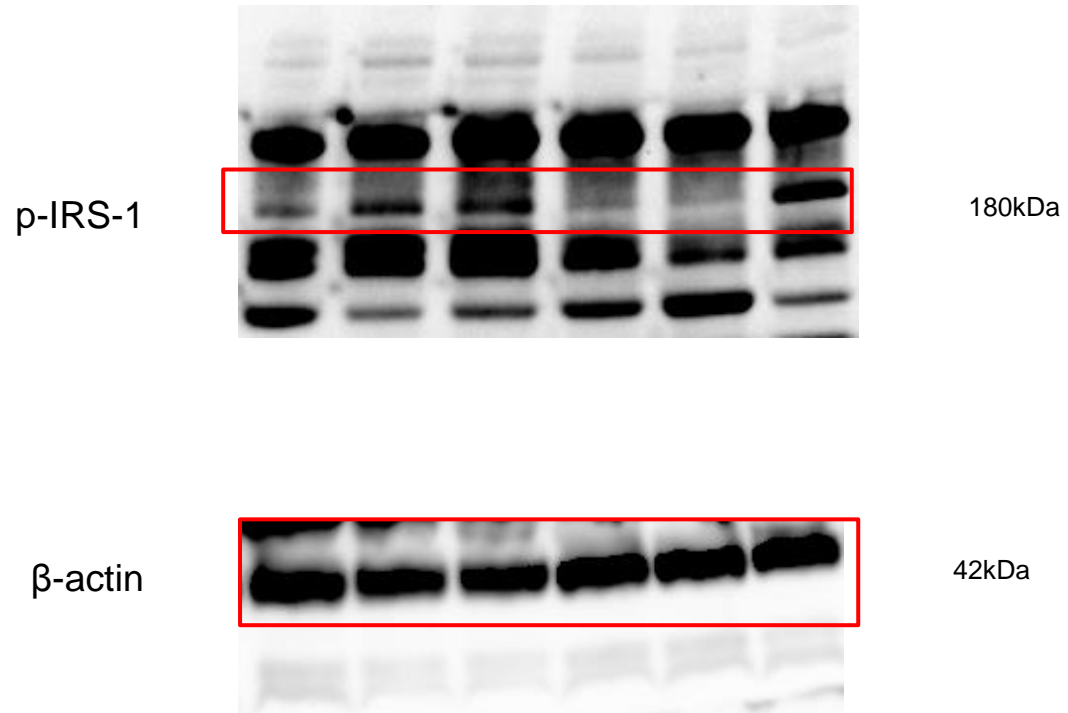
# Supplementary Figure S2

B.



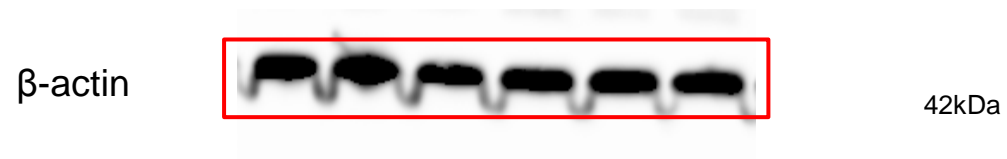
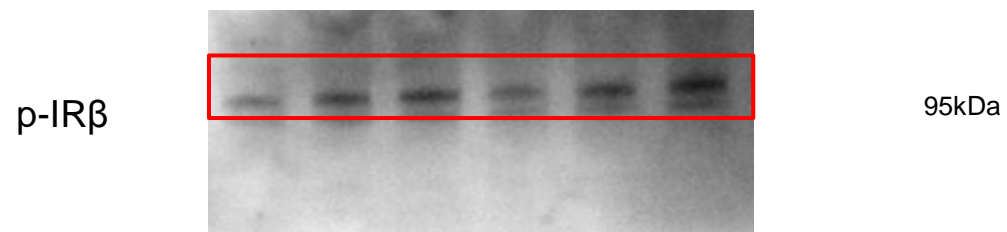
# Supplementary Figure S2

C.



# Supplementary Figure S2

D.

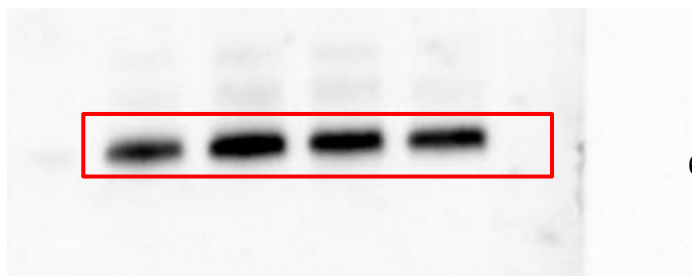




**Supplementary Figure S3:** Length gels relative to Fig 3A, B and C. Red boxes indicate the cropping lines used to generate the figures.

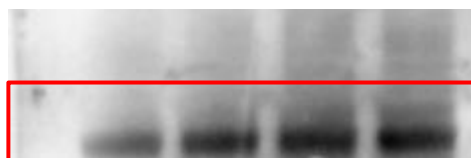
A.

IB: AKT



60kDa

IB: n-tyr



85kDa

# Supplementary Figure S3

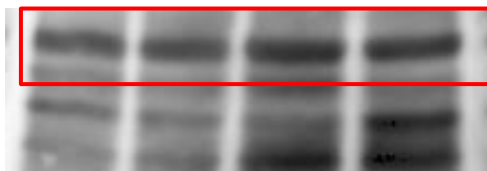
B.

IB: IRS-1



180kDa

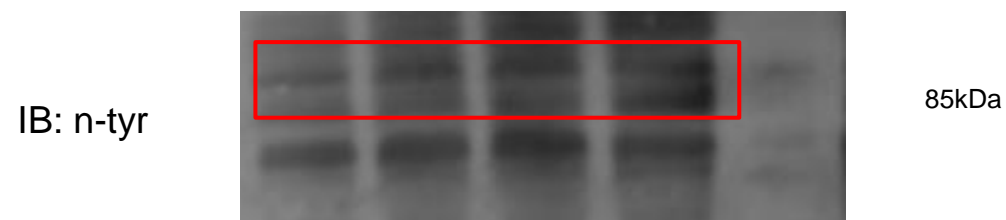
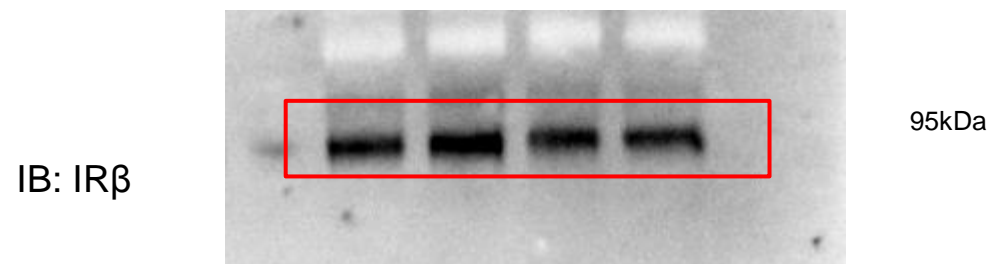
IB: n-tyr



85kDa

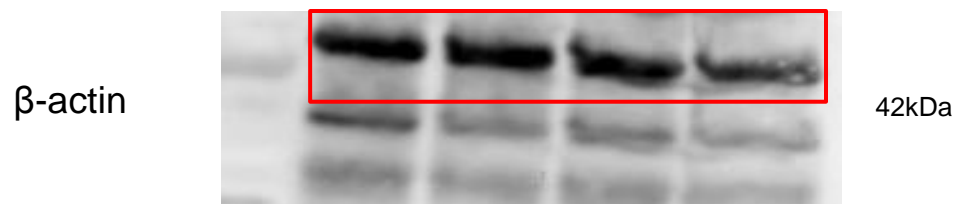
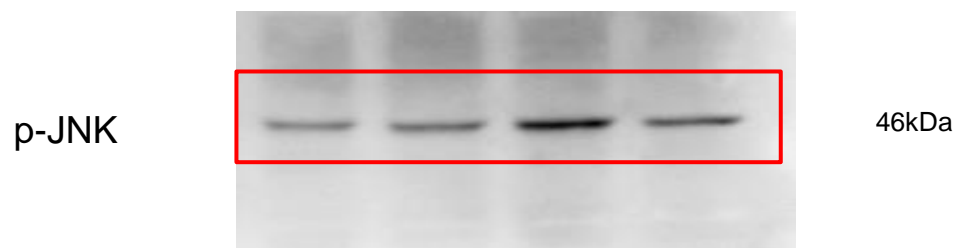
# Supplementary Figure S3

C.



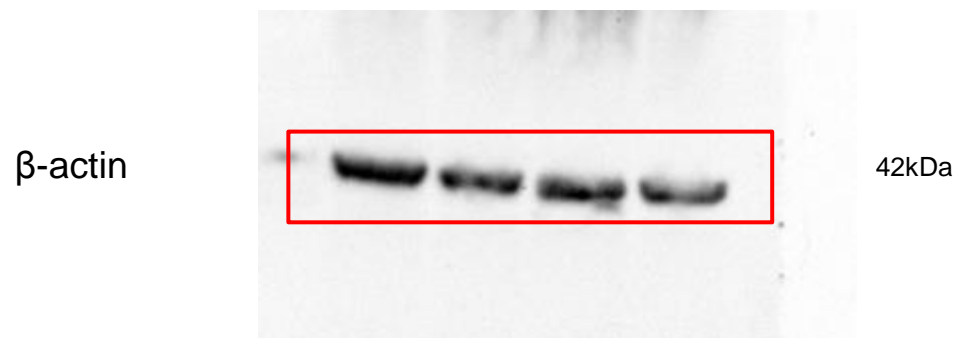
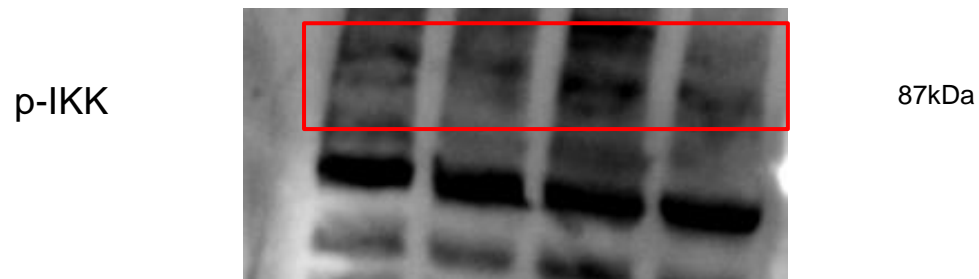
**Supplementary Figure S6:** Length gels relative to Fig 6A and B. Red boxes indicate the cropping lines used to generate the figures.

A.



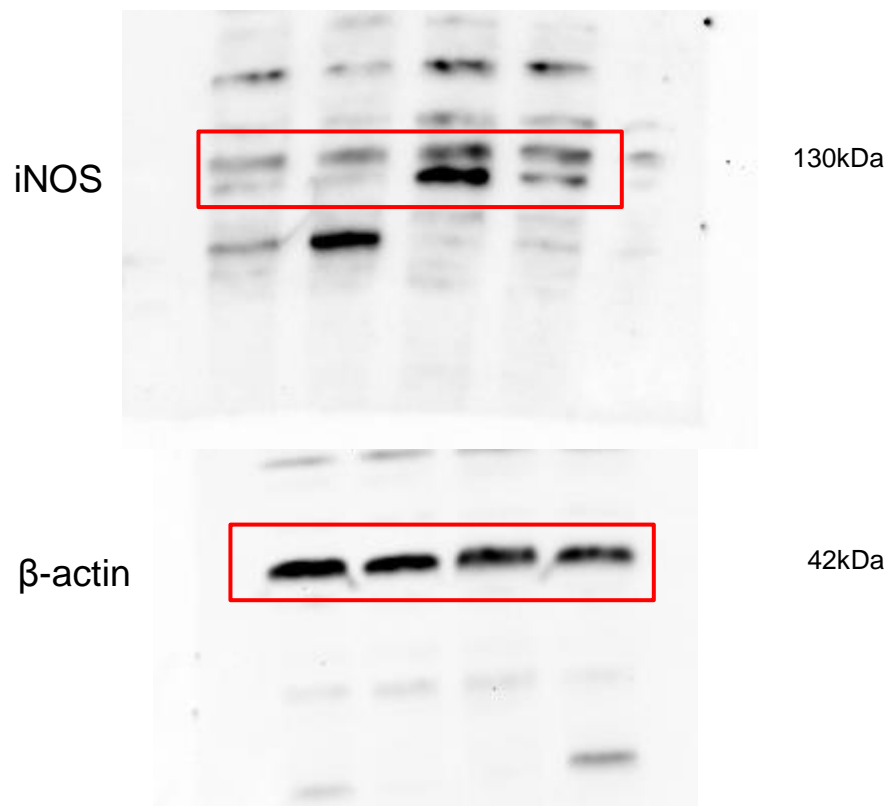
# Supplementary Figure S6

B.



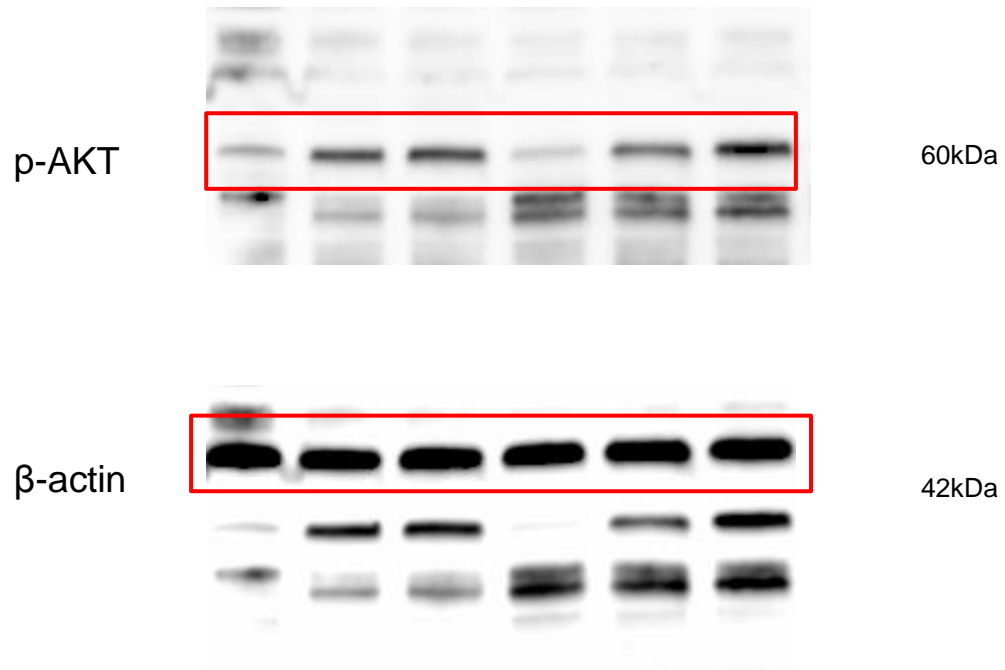
**Supplementary Figure S7:** Length gels relative to Fig 7A, B, C and D. Red boxes indicate the cropping lines used to generate the figures.

A.



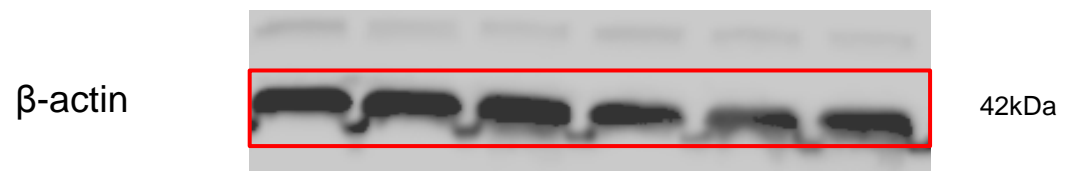
# Supplementary Figure S7

B.



# Supplementary Figure S7

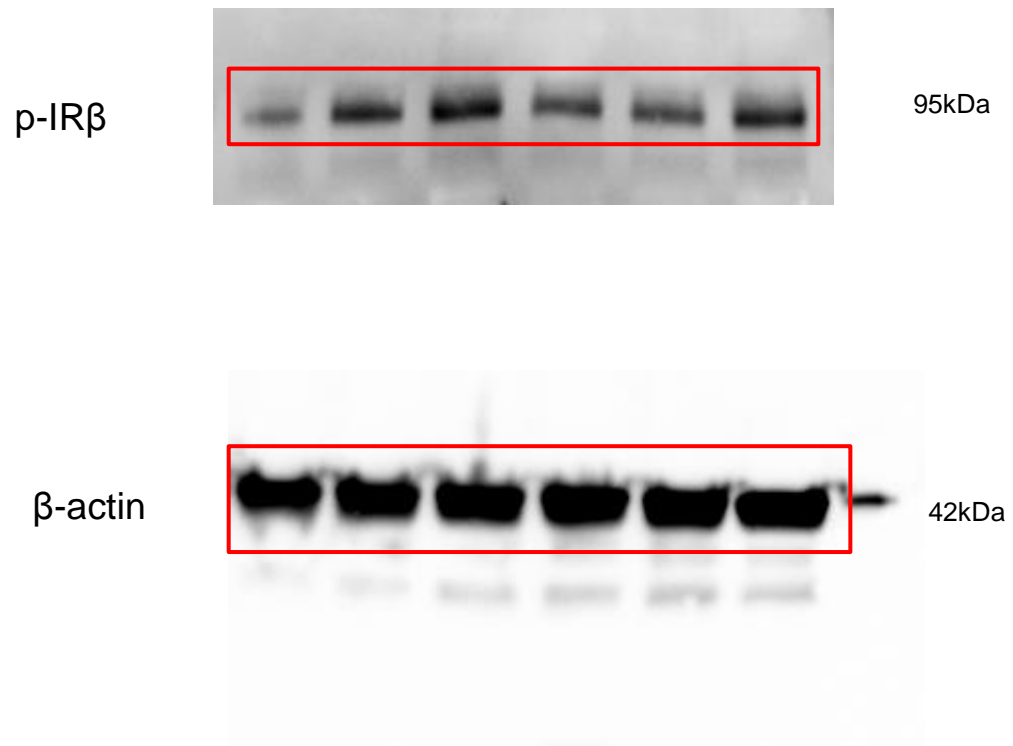
C.





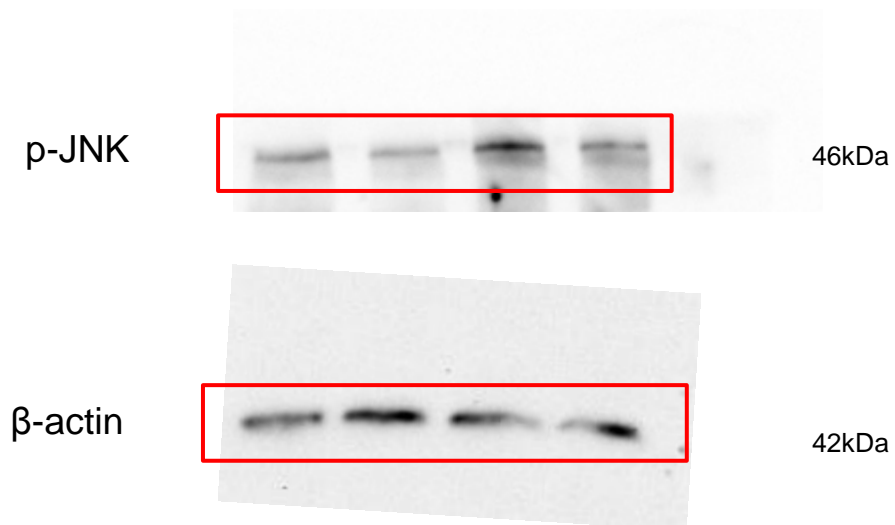
# Supplementary Figure S7

D.



**Supplementary Figure S8:** Length gels relative to Fig 8A and B. Red boxes indicate the cropping lines used to generate the figures.

A.



# Supplementary Figure S8

B.

