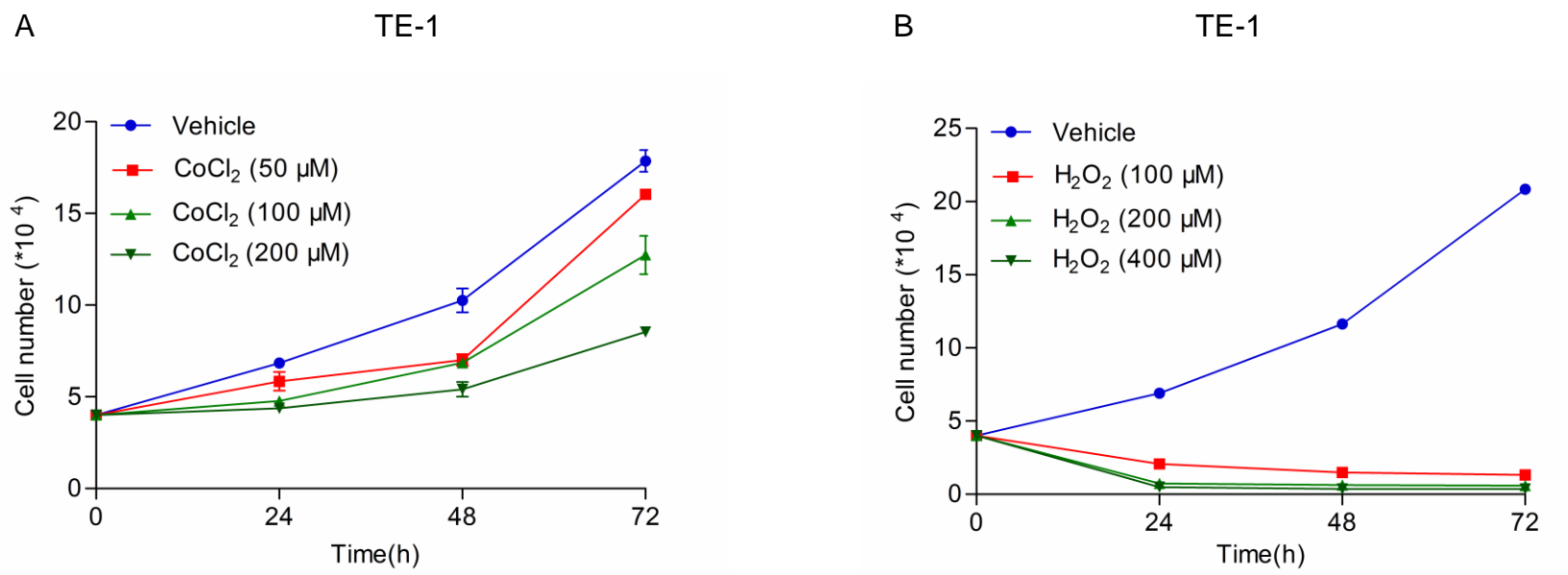
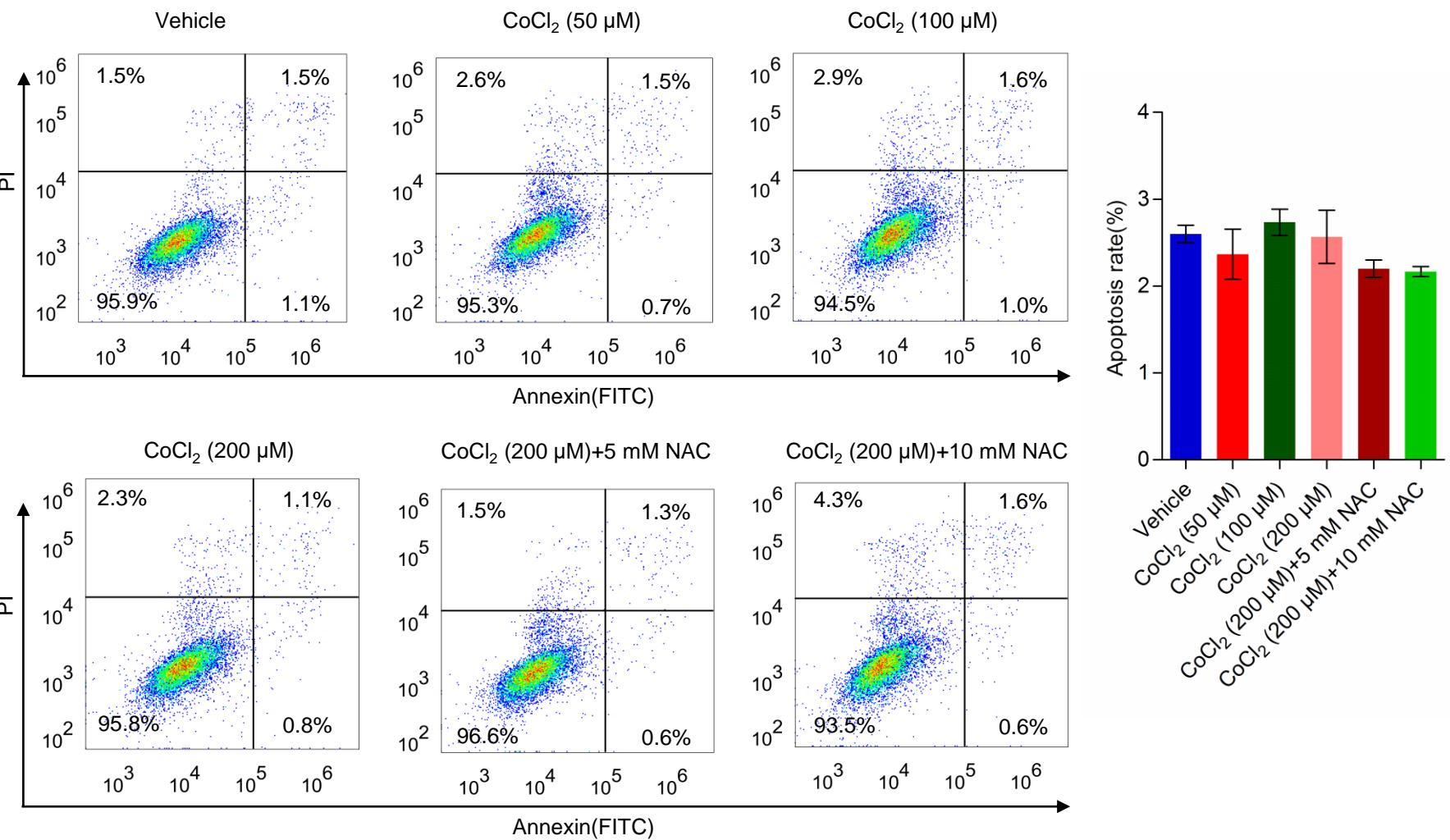


# Supplemental Figure 1



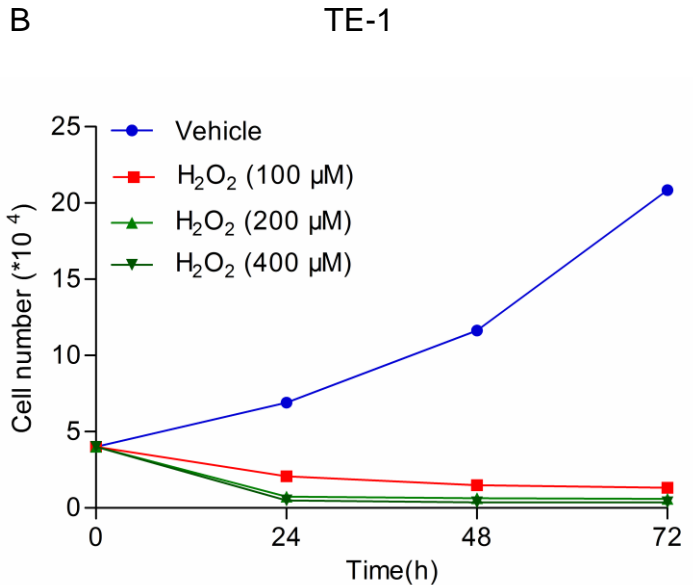
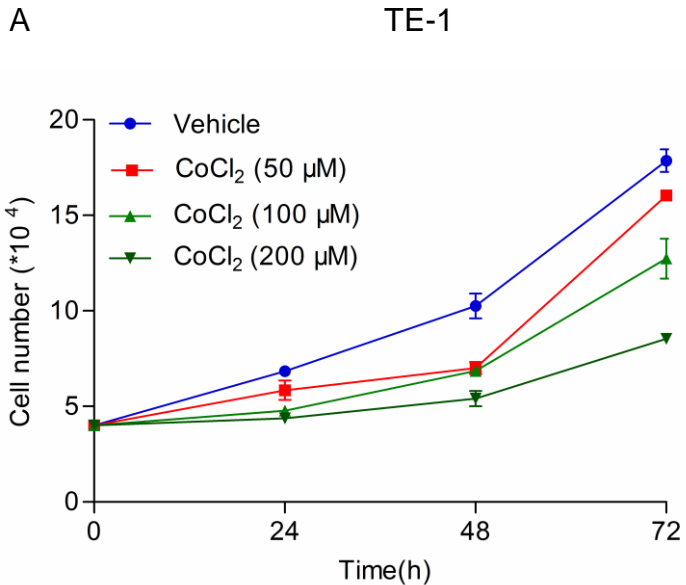
**Supplemental Figure 1. Effects of H<sub>2</sub>O<sub>2</sub> and CoCl<sub>2</sub> on TE-1 cell growth.** (A) TE-1 cells were treated with a gradient concentration of CoCl<sub>2</sub> (0, 50, 100, 200 μM) for 0, 24, 48, 72 h. (B) TE-1 cells were treated with various dose of H<sub>2</sub>O<sub>2</sub> (0, 100, 200, 400 μM) for 0, 24, 48, 72 h. Cell number was counted by flow cytometry.

# Supplemental Figure 2



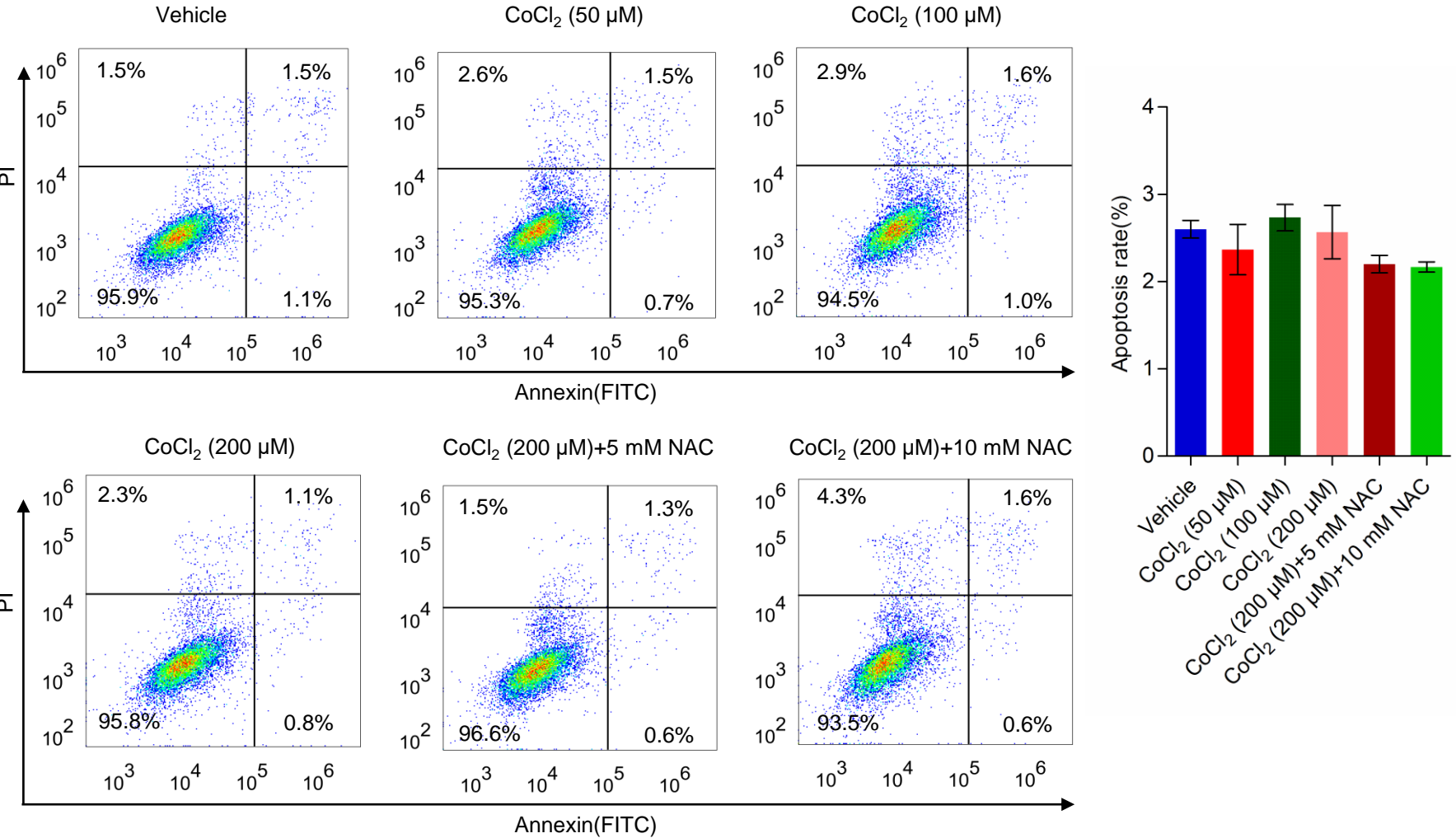
**Supplemental Figure 2.** TE-1 cells were pre-treated with a gradient concentration of CoCl<sub>2</sub> (0, 50, 100, 200 μM) or 200 μM CoCl<sub>2</sub> and NAC (5, 10 mM) for 24 h, and the apoptotic cell rate was determined by using Annexin V FITC/PI cell apoptosis detect kit on the BD Accuri™ C6 Plus System.

# Supplemental figure 1



**Supplemental Figure 1. Effects of H<sub>2</sub>O<sub>2</sub> and CoCl<sub>2</sub> on TE-1 cell growth.** (A) TE-1 cells were treated with a gradient concentration of CoCl<sub>2</sub> (0, 50, 100, 200 μM) for 0, 24, 48, 72 h. (B) TE-1 cells were treated with various dose of H<sub>2</sub>O<sub>2</sub> (0, 100, 200, 400 μM) for 0, 24, 48, 72 h. Cell number was counted by flow cytometry.

# Supplemental Figure 2



**Supplemental figure 2.** TE-1 cells were pre-treated with a gradient concentration of CoCl<sub>2</sub> (0, 50, 100, 200 μM) or 200 μM CoCl<sub>2</sub> and NAC ( 5, 10 mM) for 24 h, and the apoptotic cell rate was determined by using Annexin V FITC/PI cell apoptosis detect kit on the BD Accuri™ C6 Plus System.