

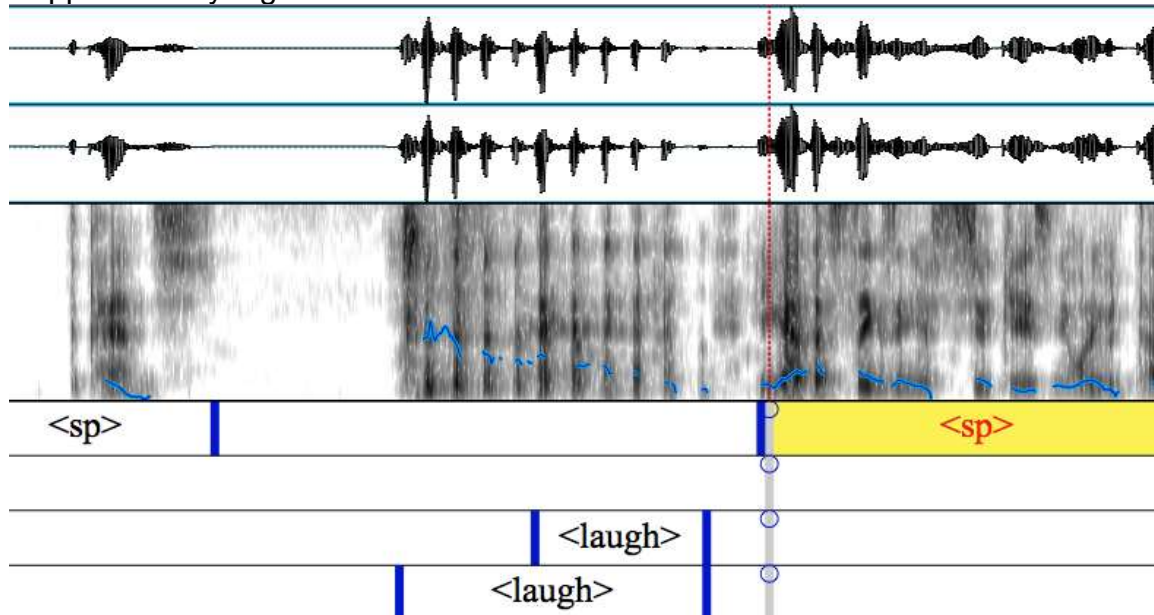
SUPPLEMENTARY MATERIAL:

Supplementary Table 1: Information Criteria for Test Selection

		Poisson			Negative Binomial		
		Regular	Zero-inflated	Mixed	Regular	Zero-inflated	Mixed
No offset	Total	AICc 1848.6 BIC 1875.8	AICc 1348.5 BIC 1378.9	AICc 1205.3 BIC 1240.1	AICc 1099.7 BIC 1130.2	AICc 1102.4 BIC 1139.3	AICc 1207.4 BIC 1245.5
	Self	AICc 1324.7 BIC 1355.2	AICc 1043.8 BIC 1077.5	AICc 1075.8 BIC 973.9	AICc 925.2 BIC 958.9	AICc 926.3 BIC 963.3	AICc 1075.6 BIC 979.1
	Other	AICc 949.7 BIC 983.4	AICc 727.6 BIC 764.5	AICc 761.5 BIC 721.6	AICc 645.5 BIC 682.4	AICc 664.0 BIC 701.0	AICc 763.5 BIC 726.8
With offset	Self	AICc 520.8 BIC 546.7	AICc 521.6 BIC 552.9	AICc 523.1 BIC 551.7	AICc 523.1 BIC 551.7	AICc 525.6 BIC 556.9	AICc 525.4 BIC 556.7

Legend Supplementary Table 1: AICc = Akaike’s information criteria corrected. BIC = Bayesian information criteria. Lower scores indicate better model fit. The lowest score for each measure is marked in bold, and indicates which test was used for analysis of that measure.

Supplementary Figure 1:



Legend Supplementary Figure 1: A depiction of how laughs were labeled for each speaker using Praat. Each speaker was represented by one tier for speech (<sp>), and another for nonspeech sounds (e.g. <laugh>).