

# Modular peptide amphiphile micelles improve an antibody-mediated immune response to Group A Streptococcus

Supplemental Information for Publication

Number of pages: 2

Number of figures: 3

Number of tables: 0

John C. Barrett<sup>1,2</sup>, Bret D. Ulery<sup>1,3,4</sup>, Amanda Trent<sup>5</sup>, Simon Liang<sup>6</sup>, Natalie A. David<sup>6</sup>, and Matthew V. Tirrell<sup>1,\*</sup>

<sup>1</sup>Institute for Molecular Engineering, University of Chicago, William Eckhardt Research Center, 5640 S. Ellis Avenue, Chicago, IL 60637

<sup>2</sup>Biophysical Sciences Graduate Program, University of Chicago, Gordon Center for Integrative Science, 929 E. 57<sup>th</sup> Street, Chicago, IL 60637

<sup>3</sup>Department of Chemical Engineering, University of Missouri, Lafferre Hall, 500 South 6<sup>th</sup> Street, Columbia, MO 65211

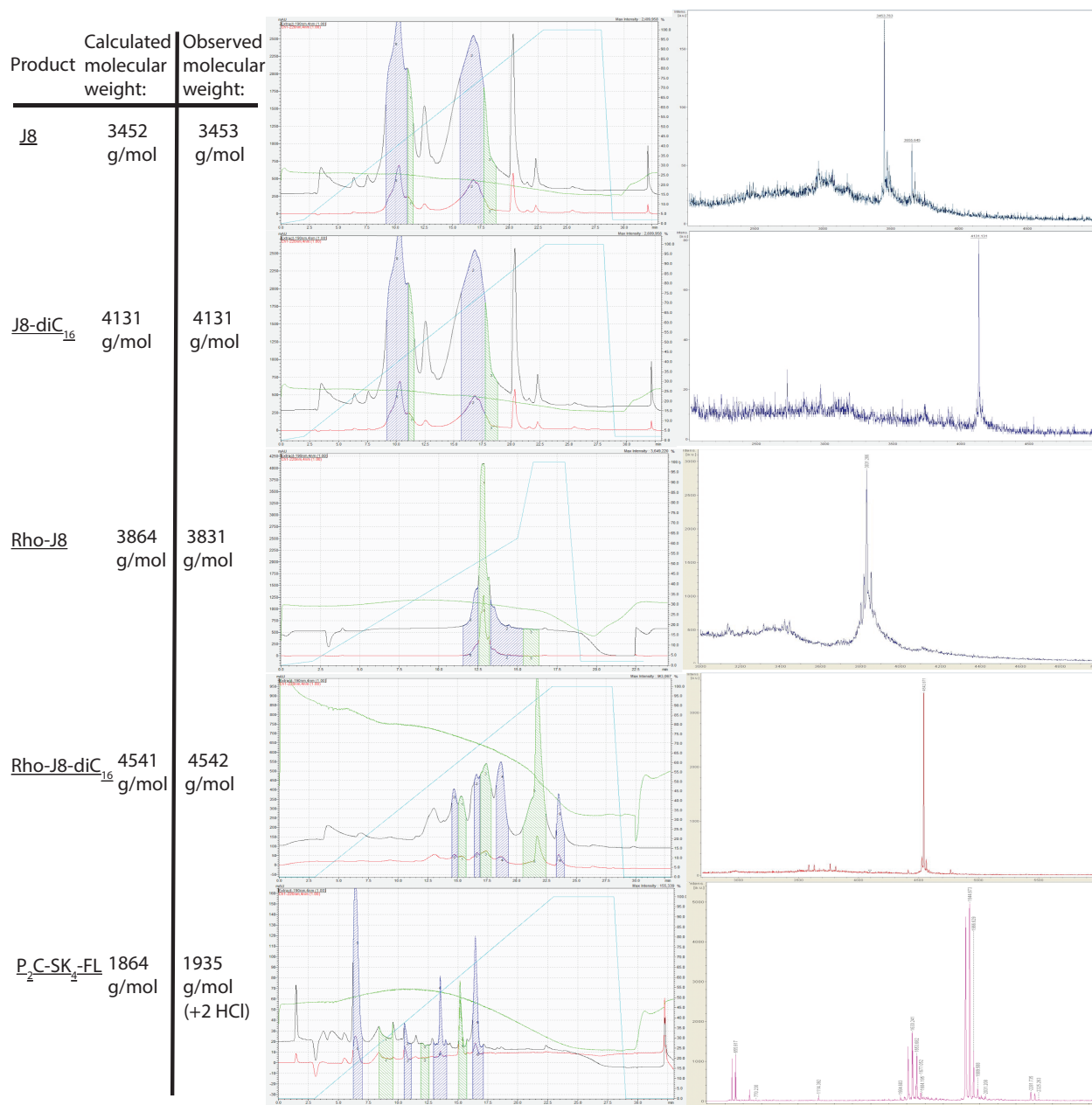
<sup>4</sup>Department of Bioengineering, University of Missouri, 254 Agricultural Engineering, Columbia, MO 65211

<sup>5</sup>Biomolecular Science and Engineering Program, University of California Santa Barbara, 500 UCen Road, Santa Barbara, CA 93106

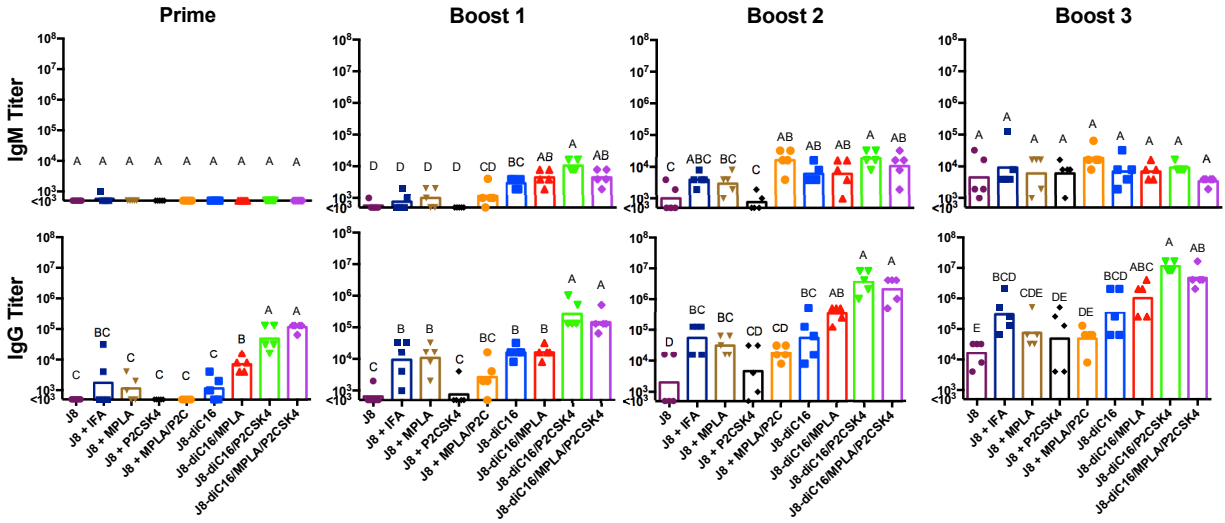
<sup>6</sup>Division of Biological Sciences, University of Chicago, 5841 S. Maryland Avenue, Chicago, Illinois 60637, USA.

\*To whom correspondence should be addressed:

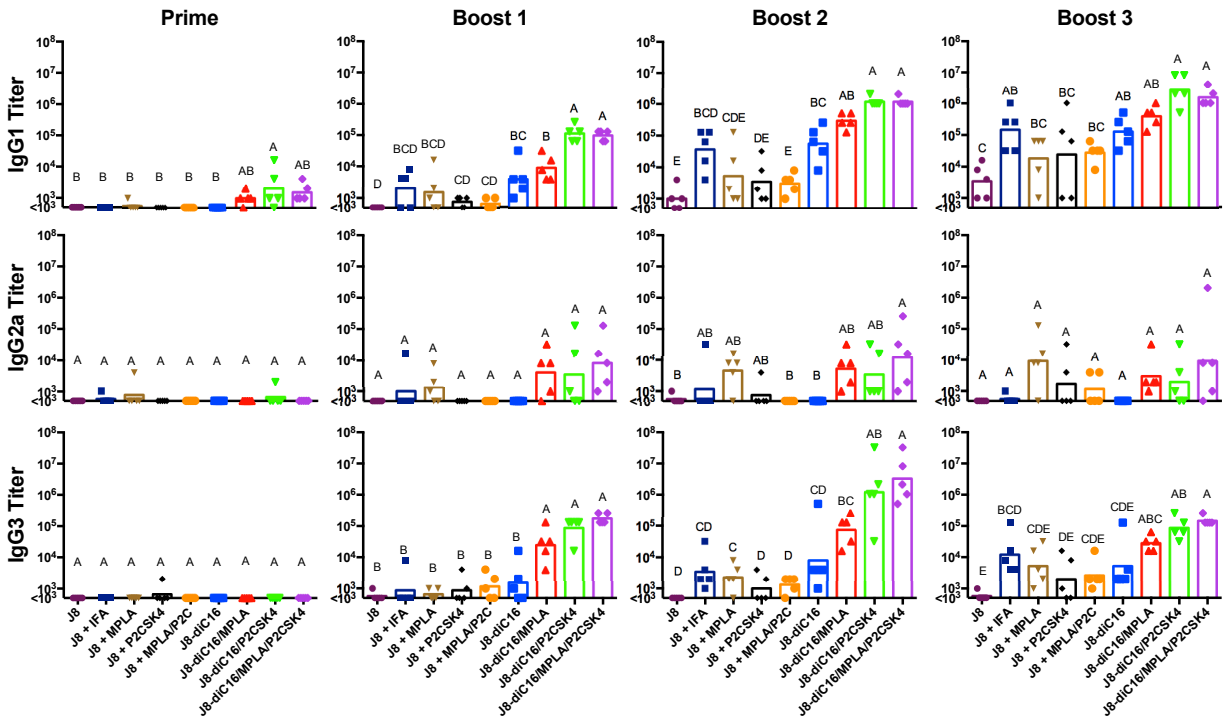
Matthew Tirrell, Institute for Molecular Engineering, William Eckhardt Research Center, 5640 S. Ellis Ave, Room 299C, The University of Chicago 60637. Phone: 773.834.2001. E-mail: [mtirrell@uchicago.edu](mailto:mtirrell@uchicago.edu)



**Supplemental Figure 1.** Physical and chemical characterization of synthesized amphiphiles. From left to right: product name; calculated molecular weight, observed molecular weight; RP-HPLC data; and MALDI molecular weight data.



Supplemental Figure 2. Antibody isotype responses for all vaccine formulations.



Supplemental Figure 3. Antibody subtype responses for all vaccine formulations.