

**Effects of Daratumumab on Natural Killer Cells and Outcomes in Relapsed Refractory  
Multiple Myeloma**

**Supplemental Appendix**

Tineke Casneuf, Xu Steven Xu, Homer C. Adams III, Amy E. Axel, Chris Chiu, Imran Khan,  
Tahamtan Ahmadi, Xiaoyu Yuan, Sagar Lonial, Torben Plesner, Henk M. Lokhorst, Niels  
W.C.J. van de Donk, Pamela L. Clemens, A. Kate Sasser

**Supplemental Table 1. Baseline Demographics and Clinical Characteristics of Patients from the GEN501 Part 2 and SIRIUS Studies**

<b>Characteristic</b>	<b>Daratumumab 8 mg/kg (n = 48)</b>	<b>Daratumumab 16 mg/kg (n = 148)</b>
Median (range) age, y	61 (38-76)	64 (31-84)
Sex, n (%)		
Male	33 (69)	79 (53)
Female	15 (31)	69 (47)
Race, n (%)		
White	32 (67)	116 (78)
Black or African American	1 (2)	16 (11)
Asian	0	4 (3)
Other	0	2 (1)
Not reported	15 (31)	10 (7)
Prior lines of therapy, n (%)		
≤3, n (%)	12 (25)	35 (24)
>3, n (%)	36 (75)	113 (76)
Median (range) time from diagnosis, mo	4.96 (1.23-15.26)	5.12 (0.77-23.77)
Refractory to, n (%)		
Last line of prior therapy	49 (83)	135 (91)
Both PI and IMiD	34 (71)	128 (86)
PI only	3 (6.25)	6 (4)
IMiD only	6 (12.5)	5 (3)
Neither PI nor IMiD	5 (10)	9 (6)
Baseline type of myeloma, n (%)		
IgG	22 (46)	73 (49)
IgA	14 (29)	26 (18)
IgD	0	4 (3)
IgM	0	1 (1)
Biclonal	4 (8)	3 (2)
Kappa	6 (13)	22 (15)
Lambda	2 (4)	17 (11)

Abbreviations: PI, proteasome inhibitor; IMiD, immunomodulatory drug; Ig, immunoglobulin.

**Supplemental Table 2. Baseline Demographics and Clinical Characteristics of Patients from the GEN501 Part 1**

Characteristic	Daratumumab 0.005 to 24 mg/kg (n = 32)
Median (range) age, y	62 (42-76)
Sex, n (%)	
Male	23 (72)
Female	9 (28)
Race, n (%)	
White	32 (100)
Prior lines of therapy, n (%)	
≤3, n (%)	4 (12.5)
>3, n (%)	28 (87.5)
Median (range) time from diagnosis, mo	6.05 (1.79-19.11)
Refractory to, n (%)	
Last line of prior therapy	6 (19)
Both PI and IMiD	8 (25)
PI only	1 (3)
IMiD only	2 (6)
Neither PI nor IMiD	21 (66)
Baseline type of myeloma, n (%)	
IgG	16 (50)
IgA	8 (25)
Biclonal	1 (3)
Kappa	4 (13)
Lambda	2 (6)
Not detected	1 (3)

Abbreviations: PI, proteasome inhibitor; IMiD, immunomodulatory drug; Ig, immunoglobulin.

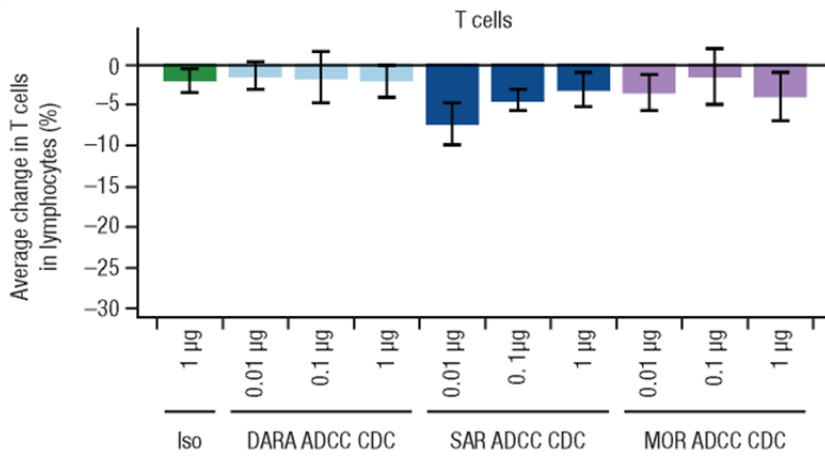
**Supplemental Table 3. ORRs With Daratumumab 8 mg/kg and 16 mg/kg**

<b>Response</b>	<b>Combined (GEN501 and SIRIUS)</b>		<b>SIRIUS Part 1</b>	
	<b>DARA 8 mg/kg (n = 48)</b>	<b>DARA 16 mg/kg (n = 148)</b>	<b>DARA 8 mg/kg (n = 18)</b>	<b>DARA 16 mg/kg (n = 41)</b>
ORR, n (%)	5 (10.4)	46 (31.1)	2 (11.1)	13 (31.7)
Best overall response, n (%)				
Stringent complete response	0	3 (2.0)	0	2 (4.9)
Complete response	0	2 (1.4)	0	0
Very good partial response	1 (2.1)	12 (8.1)	1 (5.6)	6 (14.6)
Partial response	4 (8.3)	29 (19.6)	1 (5.6)	5 (12.2)
Minimal response	8 (16.7)	9 (6.1)	2 (11.1)	0
Stable disease	24 (50.0)	68 (45.9)	10 (55.6)	16 (39.0)
Progressive disease	7 (14.6)	18 (12.2)	1 (5.6)	9 (22.0)
Not evaluable	3 (6.3)	7 (4.7)	3 (16.7)	3 (7.3)

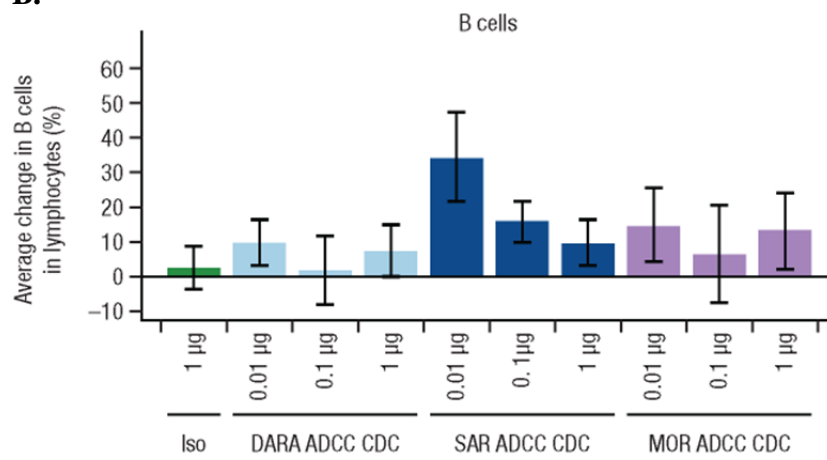
Abbreviations: DARA, daratumumab; ORR, overall response rate.

**Supplemental Figure 1. Percent change in (A) cells and (B) B cells by CD38 antibodies in ADCC/CDC assays *in vitro*. Data were normalized to a no complement, no antibody control.**

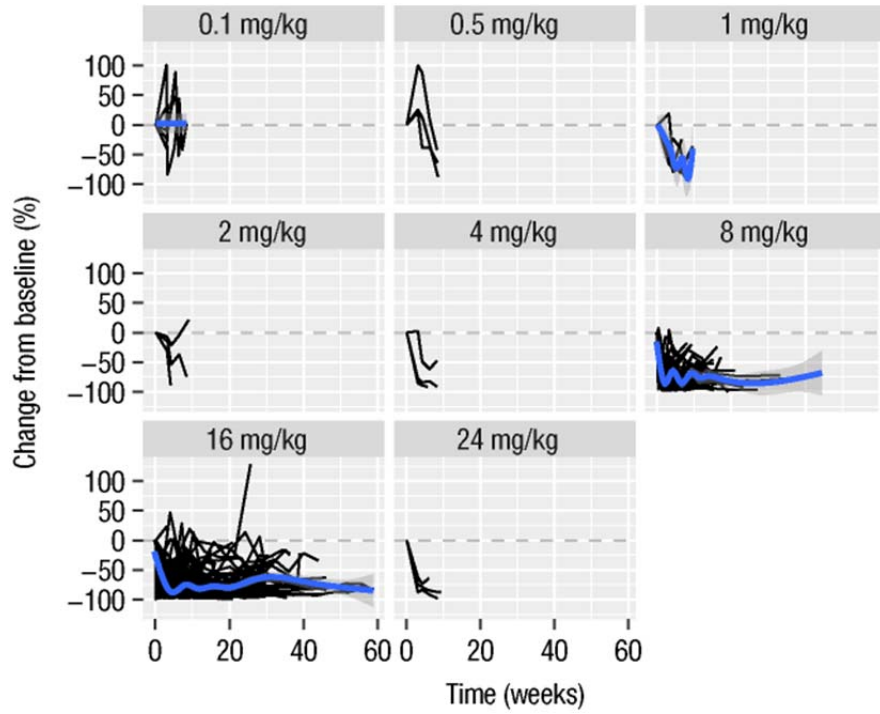
**A.**



**B.**



**Supplemental Figure 2. Percent change in NK cells from baseline during daratumumab treatment in peripheral blood in GEN501 and SIRIUS.**



**Supplemental Figure 3. Percent change in NK cells from baseline during daratumumab treatment in bone marrow in GEN501 and SIRIUS.**

