

Antigen	Species	Clone/Fluorochrome	Source	Reference
CD123	Human	9F5-PE	BD Pharmingen	
CXCR4	Human	12G5-APC	BD Pharmingen	
Ter119	Mouse	PE	BD Pharmingen	
CD123	Mouse	5B11-Alexa Fluor 647	AbD Serotec	
CD123	Mouse	5B11-APC	eBioscience	
CXCR4	Mouse	L276F12-Alexa Fluor 647	Biolegend	
CD34	Human	581-BV421	BD Horizon	
CD38	Human	H0B7 PECy7	BD Pharmingen	
CD90	Human	5E10-Biotin	BD Pharmingen	
CD123	Human	7G3	Antibody Services, Walter and Eliza Hall Institute Biotechnology Centre	<sup>38</sup>
IgG control	Human	IgG	Antibody Services, Walter and Eliza Hall Institute Biotechnology Centre	

Figure S1

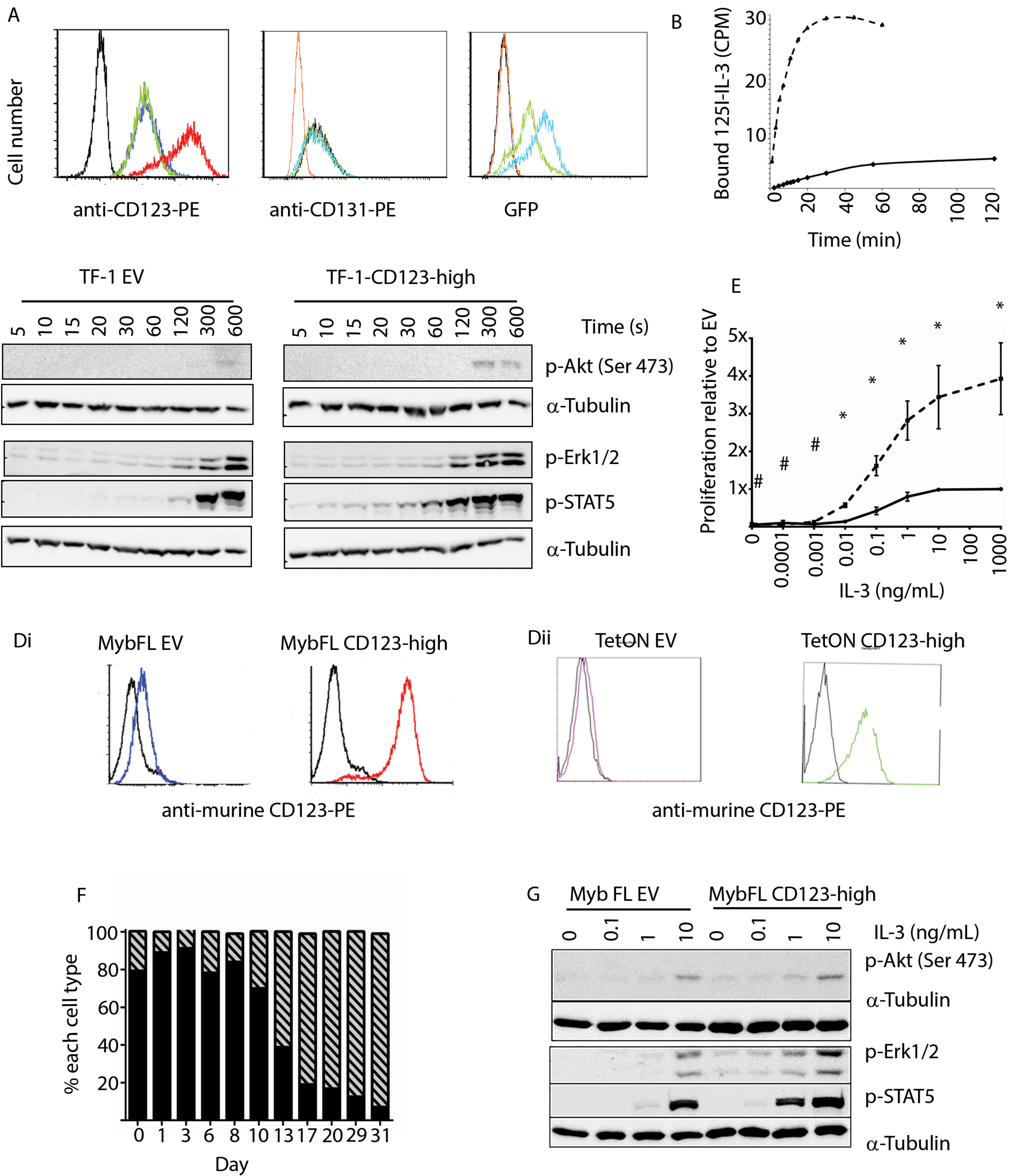


Figure S2

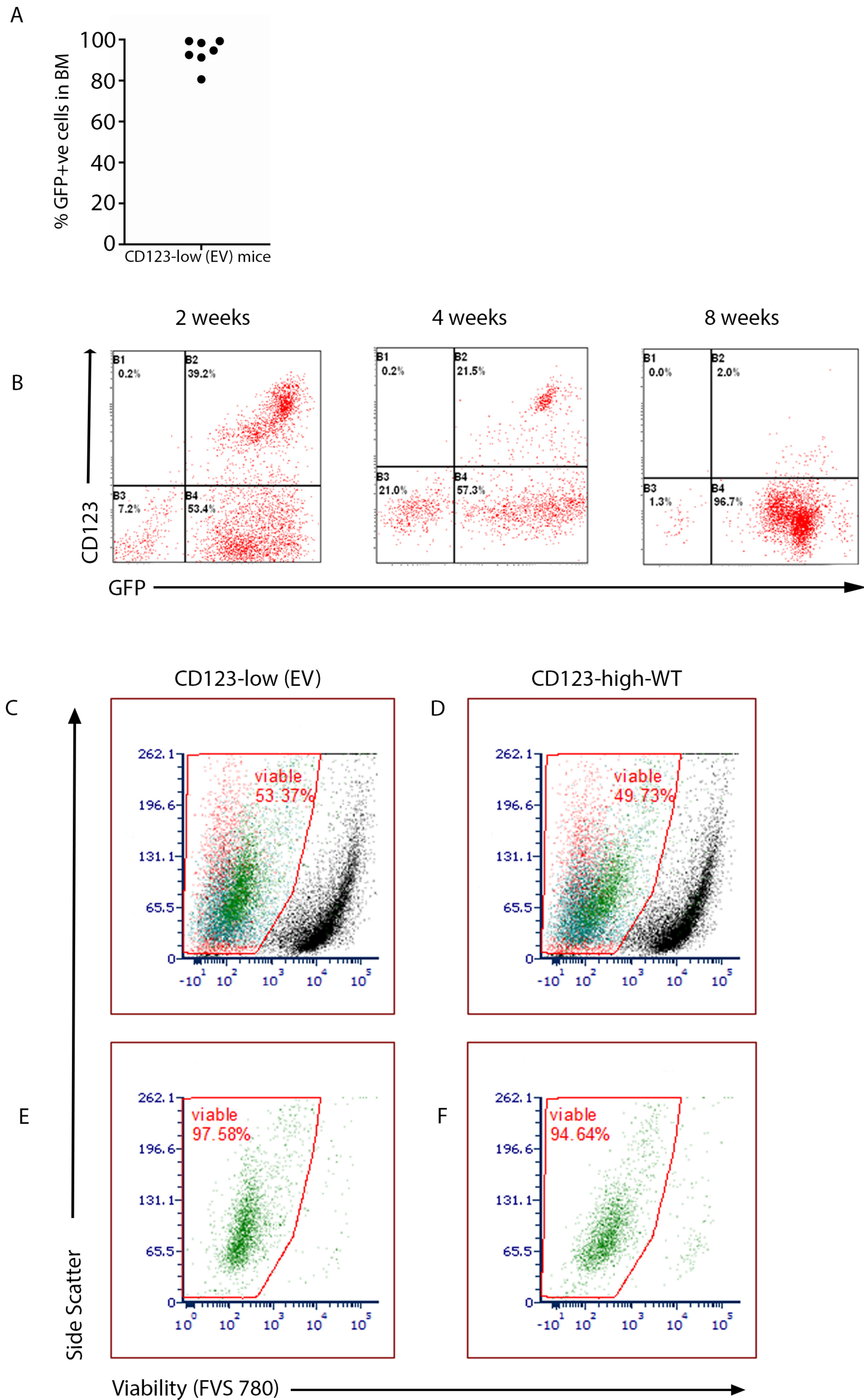
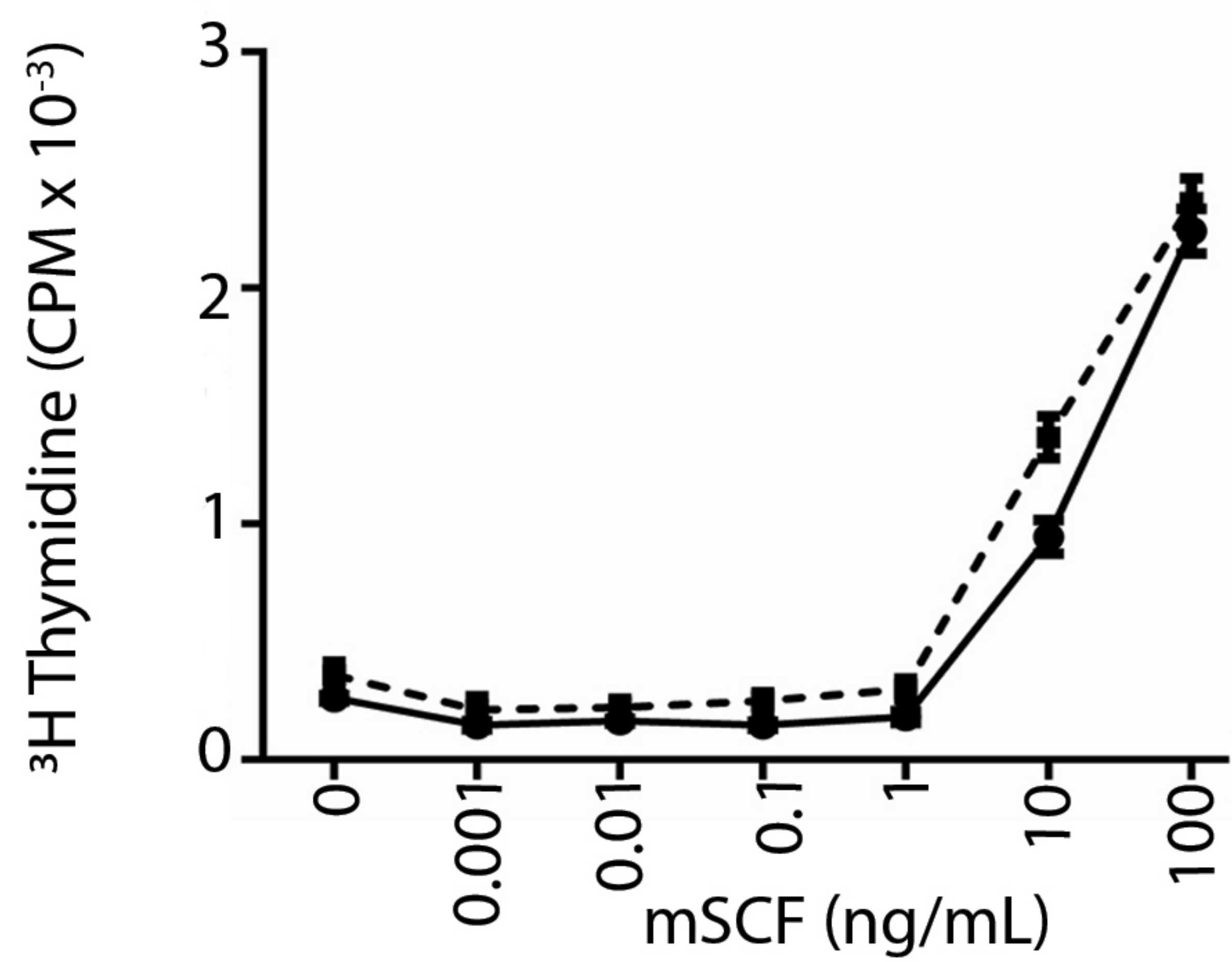


Figure S3

A



B

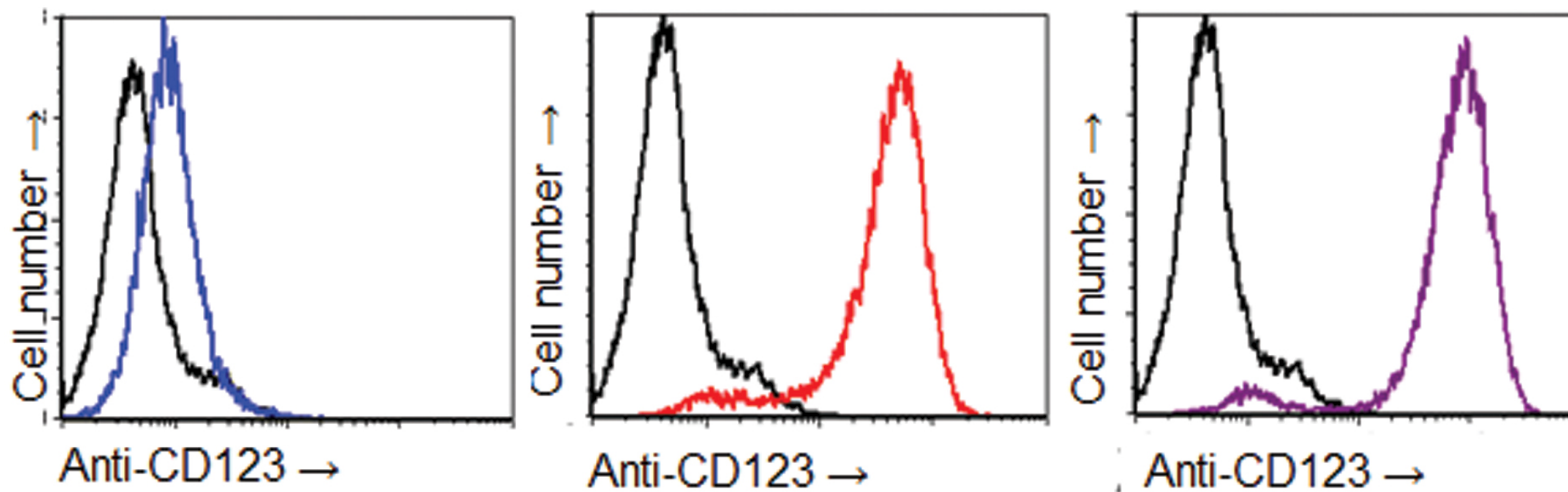


Figure S4

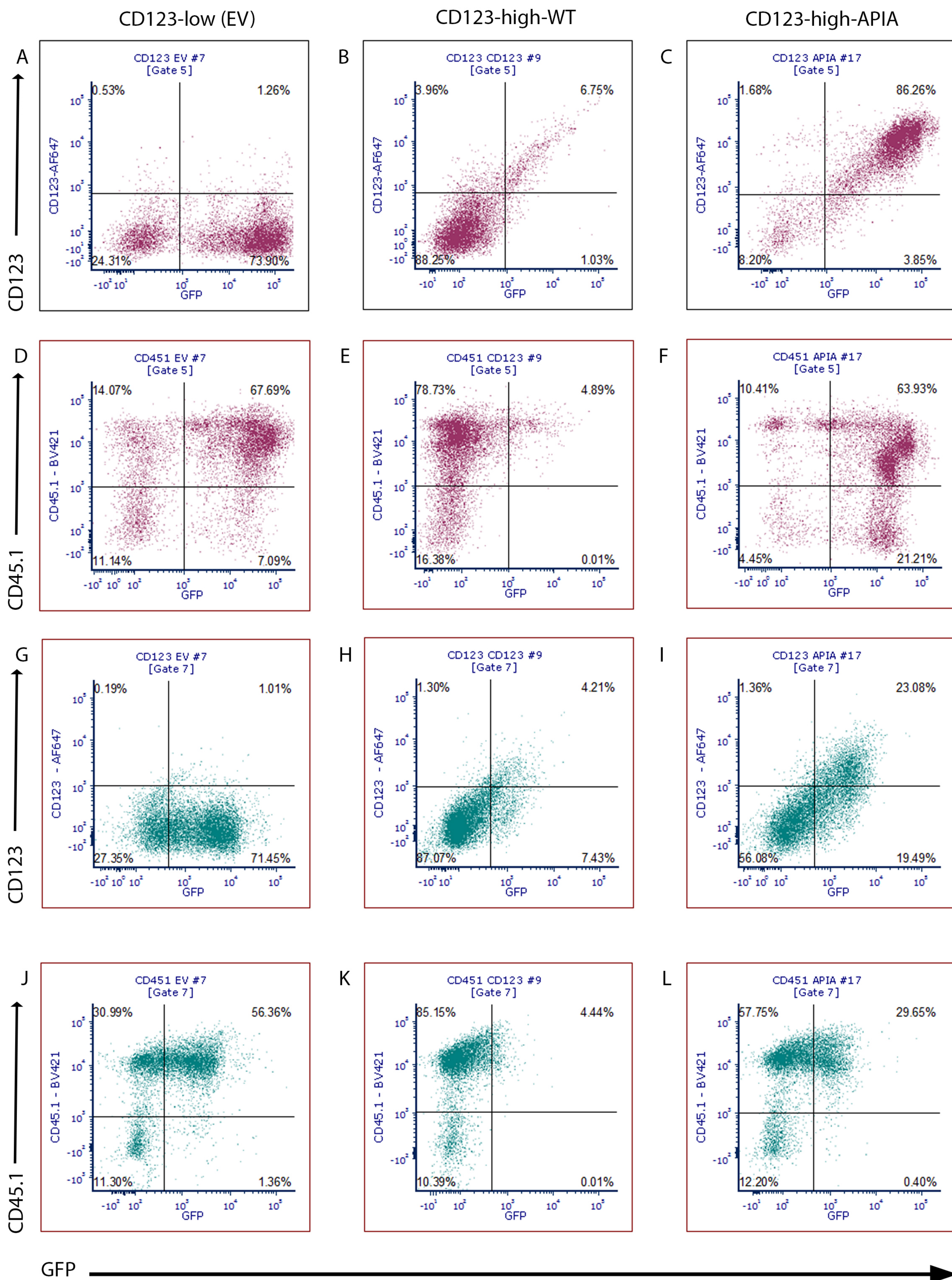
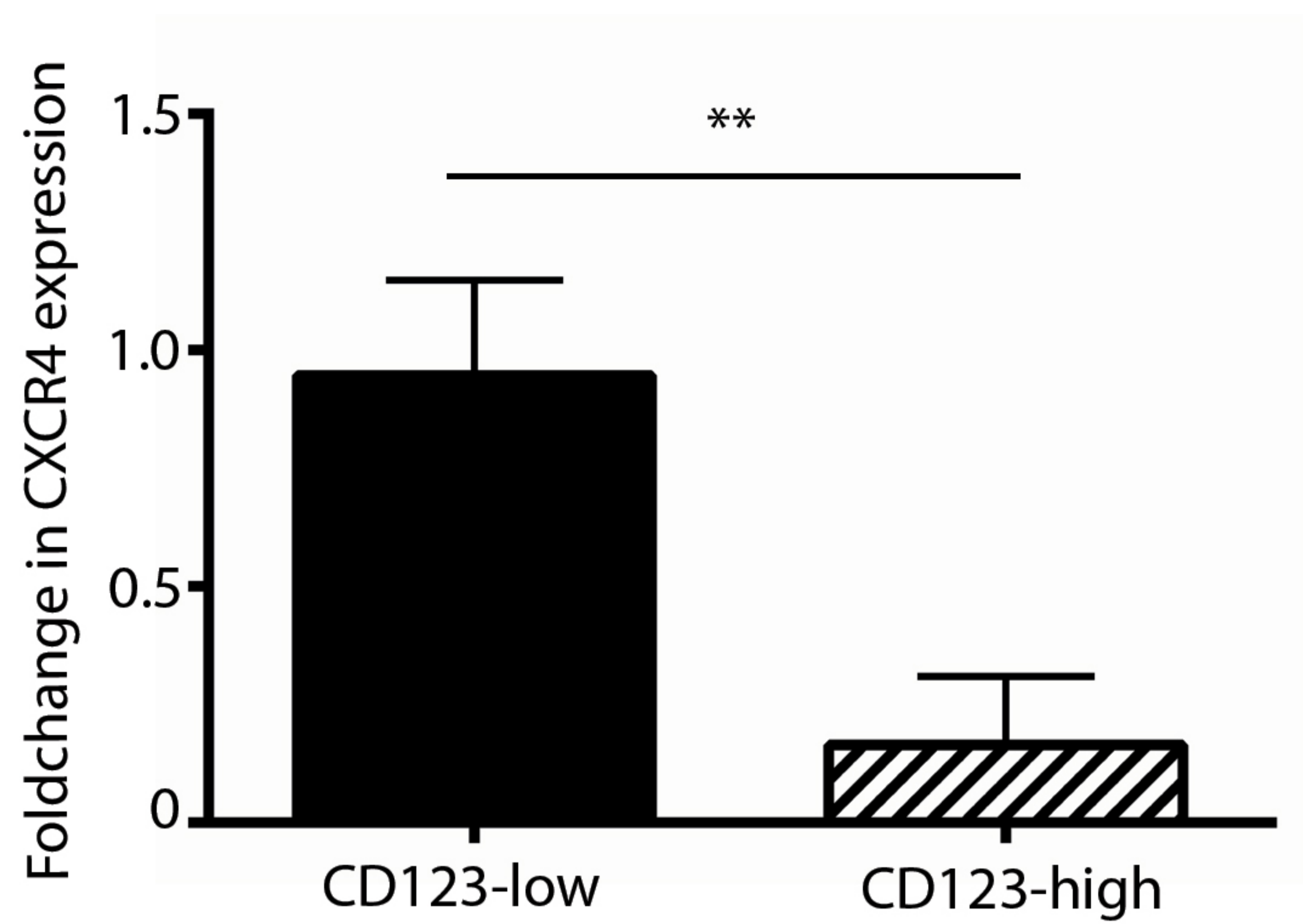


Figure S5

Ai



Aii

