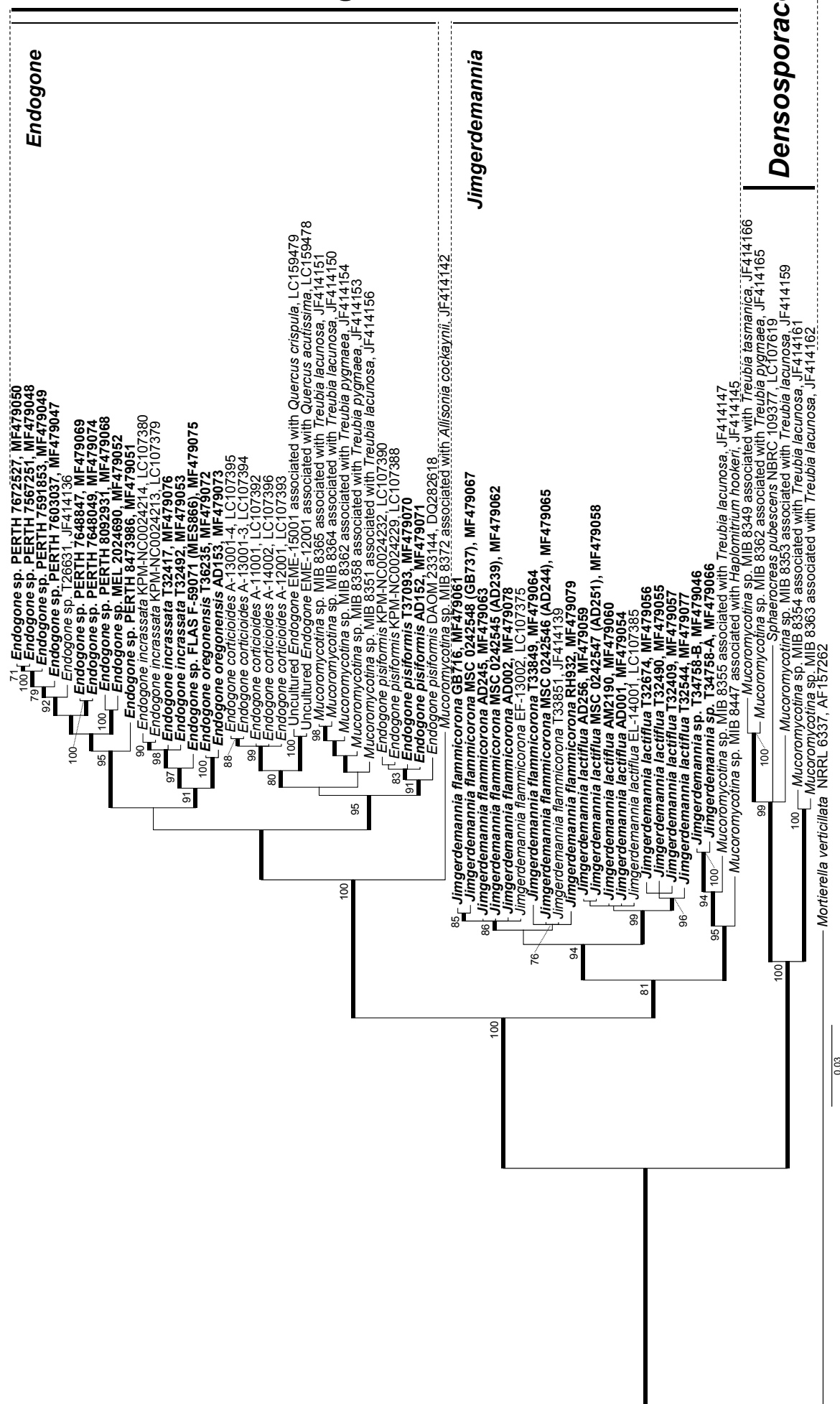


Endogonaceae



Supplementary Fig. 2. Phylogenetic reconstruction of *Endogonales* based on EF1- α sequences. *Mortierella verticillata* was used as outgroup. The tree shows the topology obtained with the Bayesian method; branches with Bayesian posterior probabilities ≥ 0.95 are thickened and ML bootstrap support values ≥ 70 are shown. Sequences generated in this study are in bold.