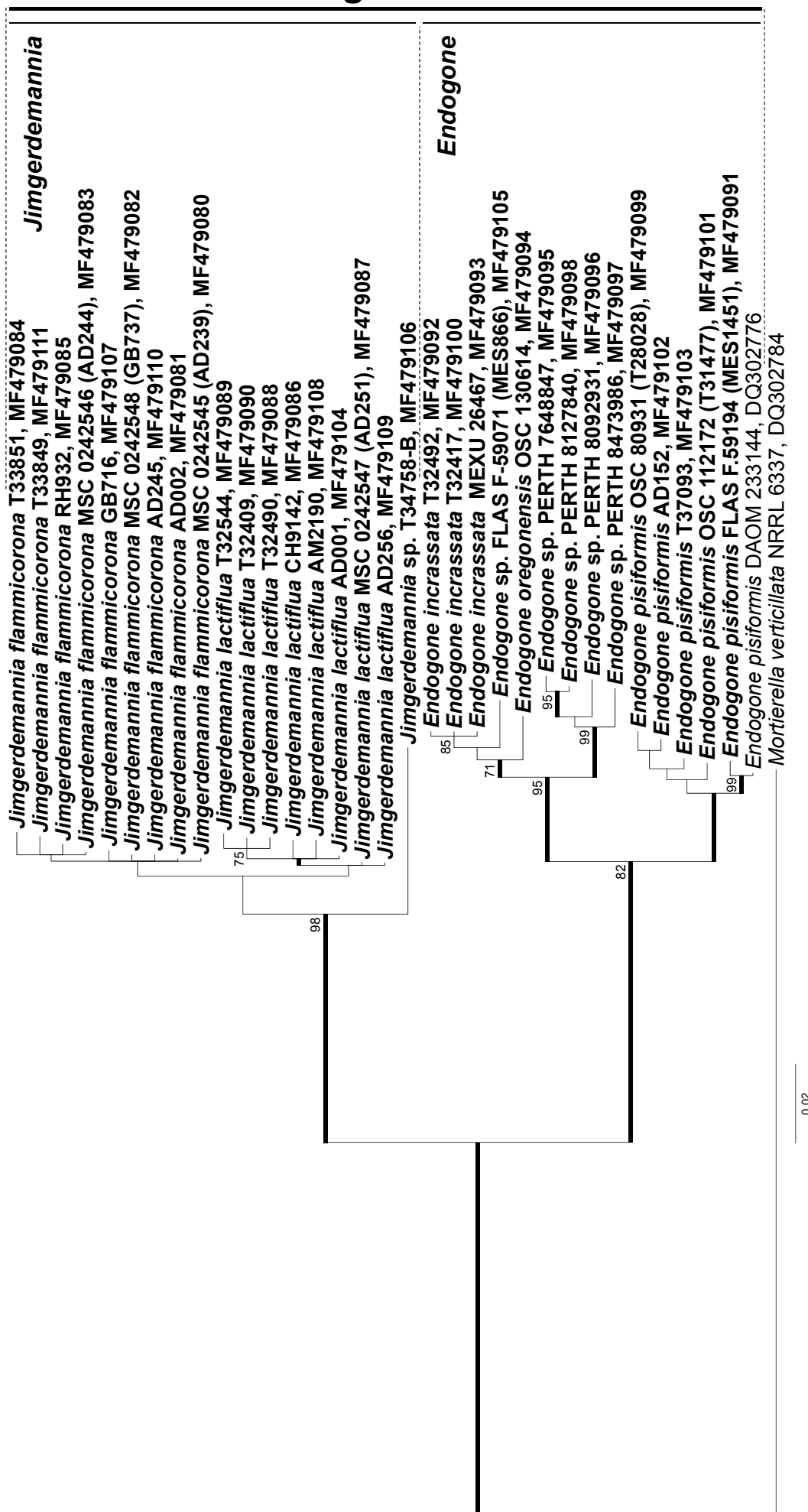


# Endogonaceae



**Supplementary Fig. 3.** Phylogenetic reconstruction of *Endogonaceae* based on RPB2 sequences. *Mortierella verticillata* was used as outgroup. The tree shows the topology obtained with the Bayesian method; branches with Bayesian posterior probabilities  $\geq 0.95$  are thickened and ML bootstrap support values  $\geq 70$  are shown. Sequences generated in this study are in bold.