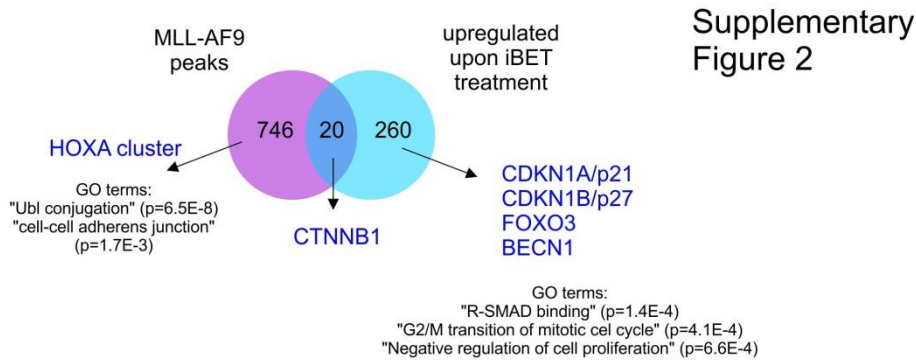
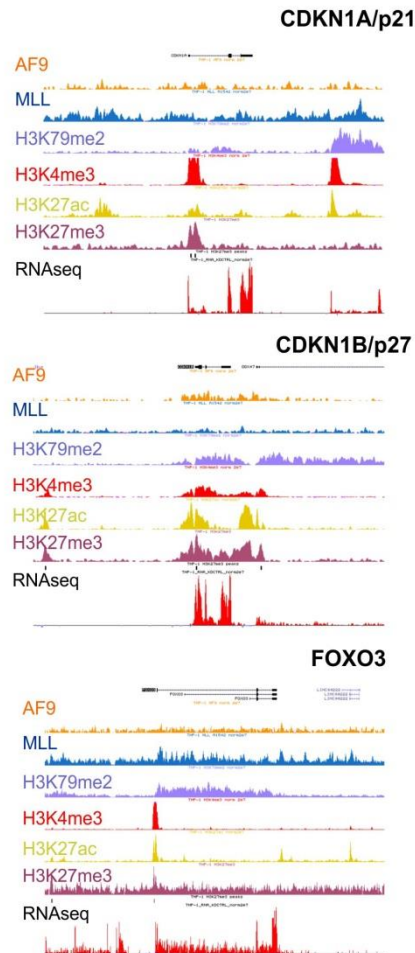


A



B



S2 Fig. I-Bet151 targets specific and non-specific MLL-AF9 targets. A) Venn diagram for MLL-AF9 specific binding sites in THP1 cells [37] versus 3-fold upregulated genes upon 2 μ M I-BET151 treatment in THP1 cells in a dose-dependent manner. **B)** ChIP-seq occupancy profiles of AF9, MLL, H3K79me2, H3K4me, H3K27Ac, H3K27me3

at the various loci. Examples of I-BET151 upregulated genes are shown without clear MLL-AF9 chromatin binding. RNAseq in THP1 cells was also performed and tracks are included as well.