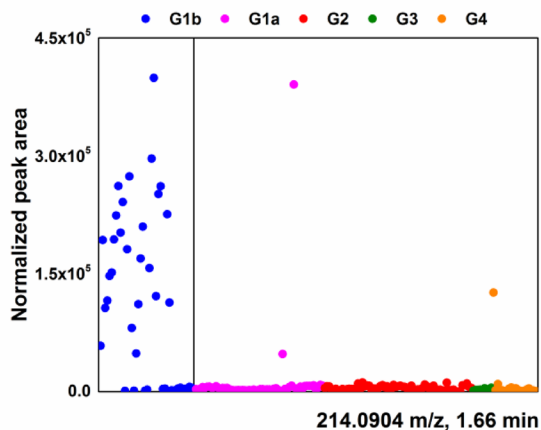
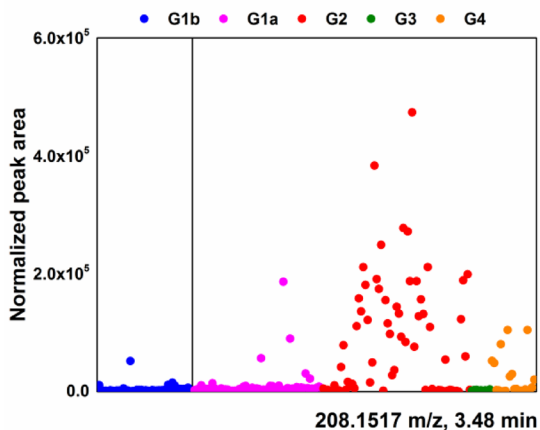
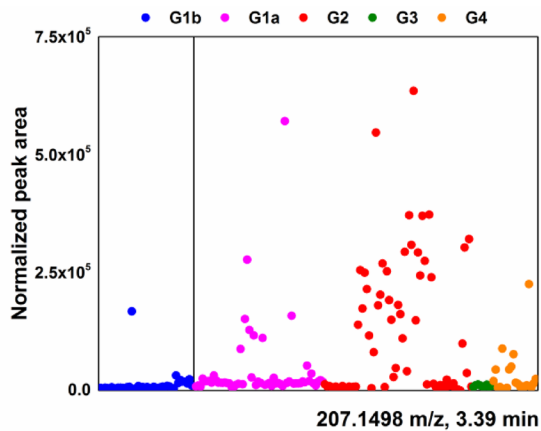
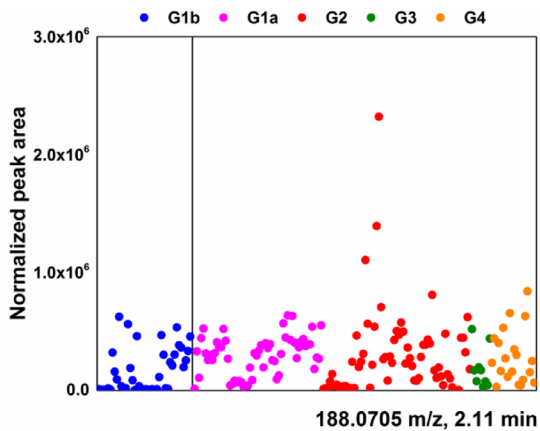
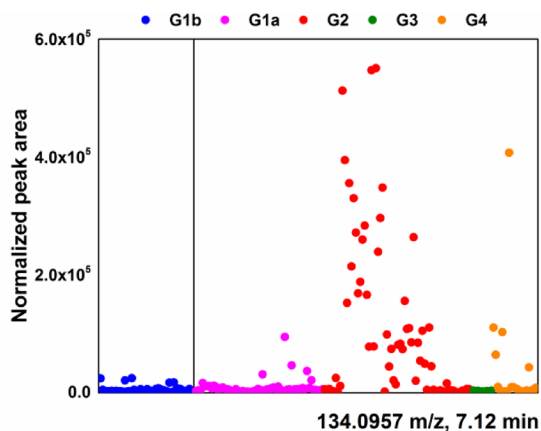
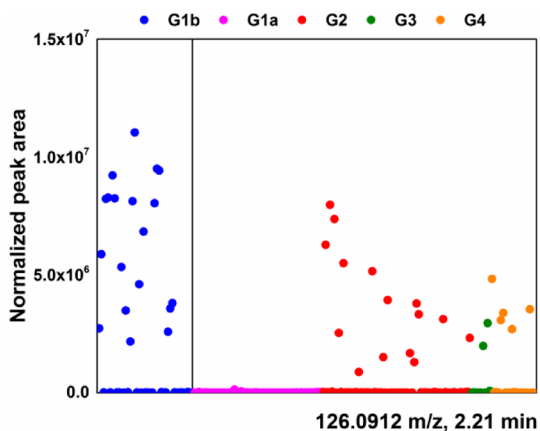
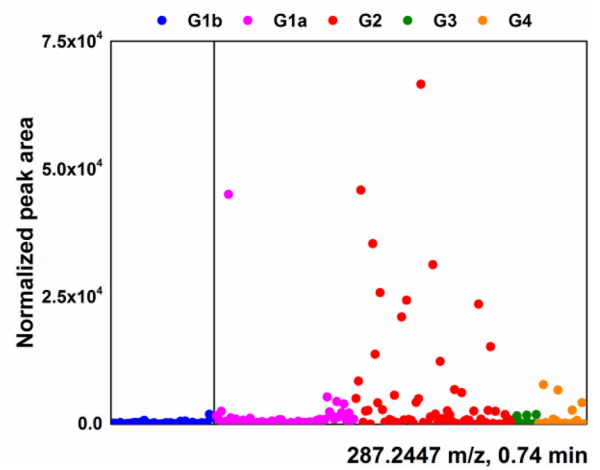
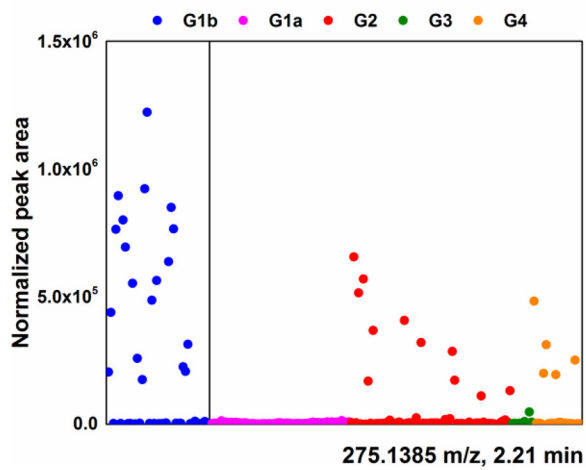
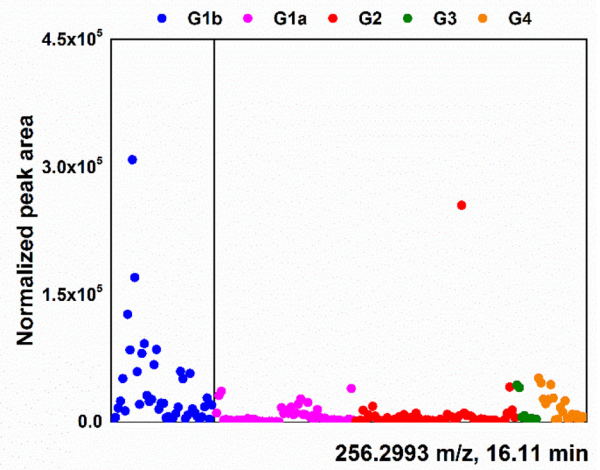
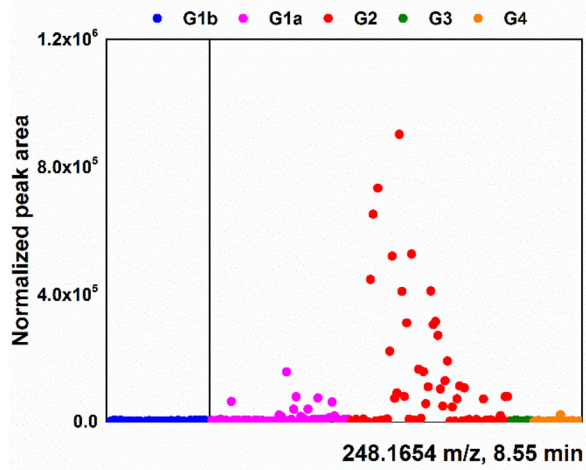
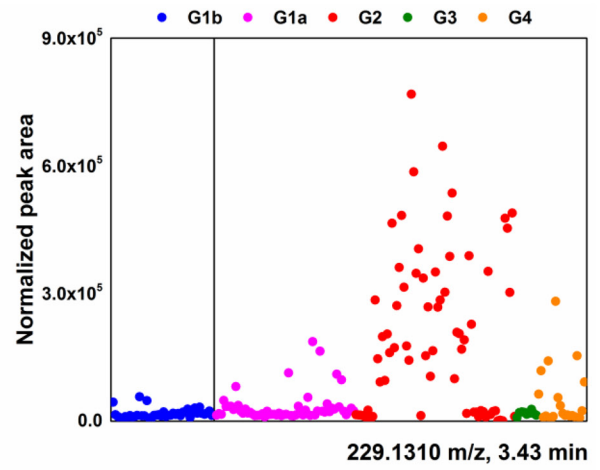
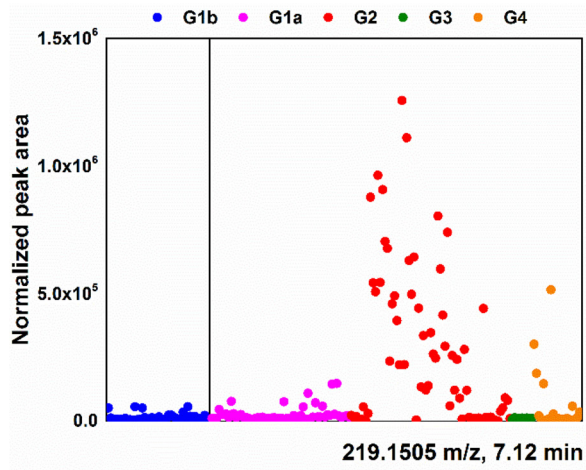
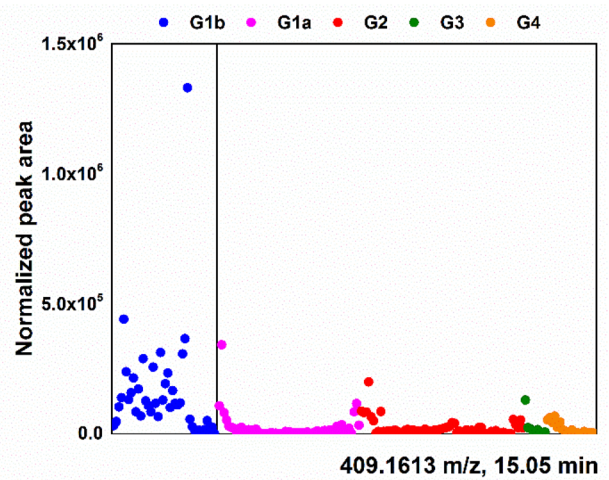
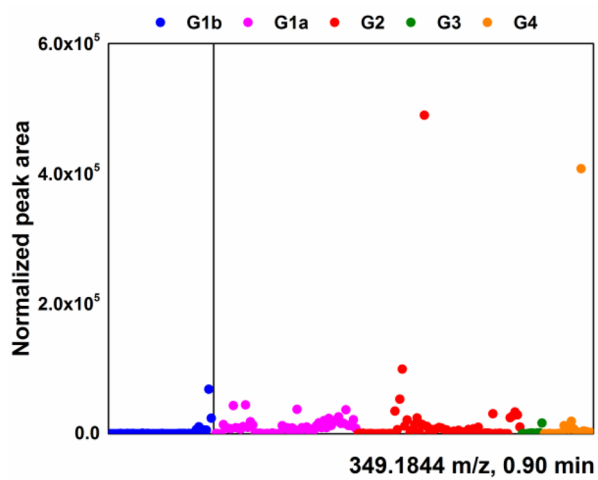
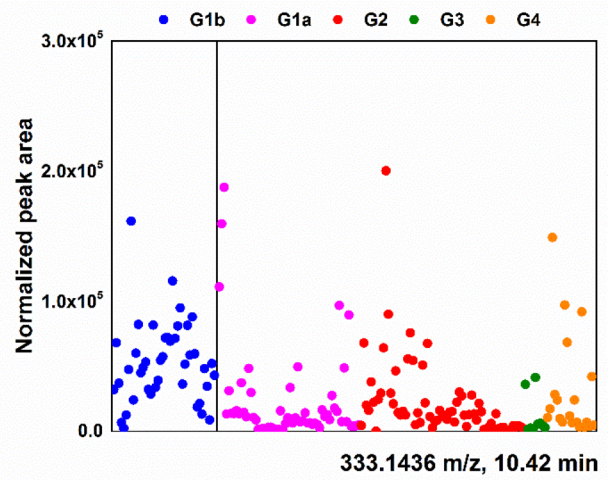
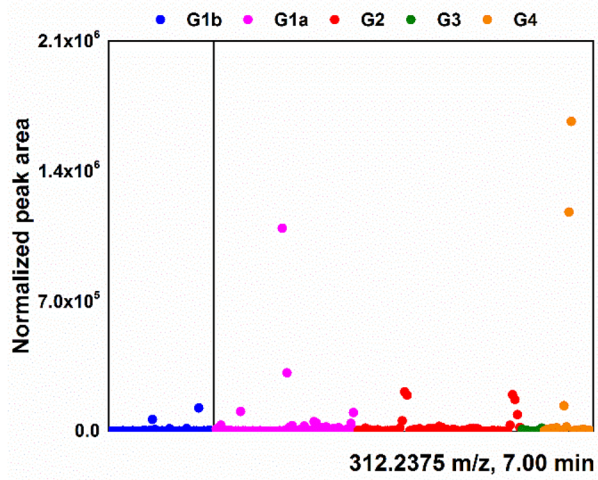
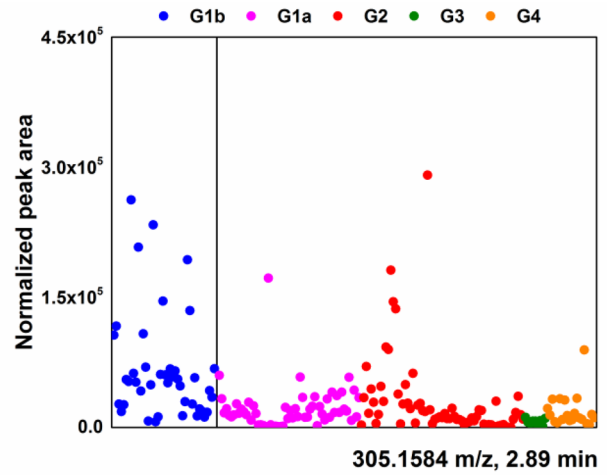
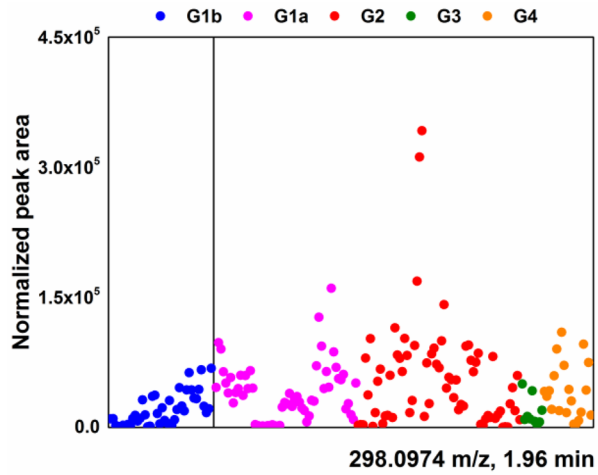


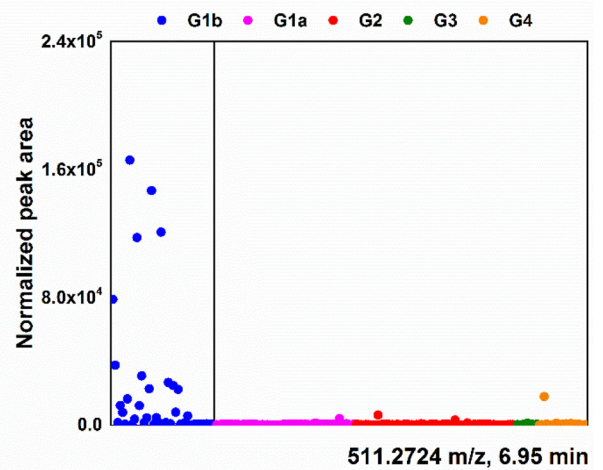
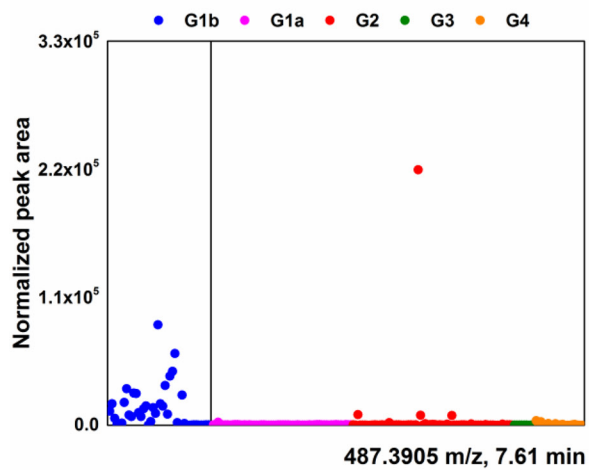
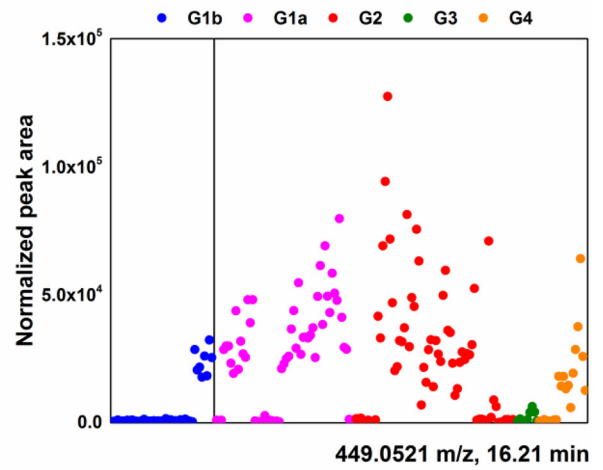
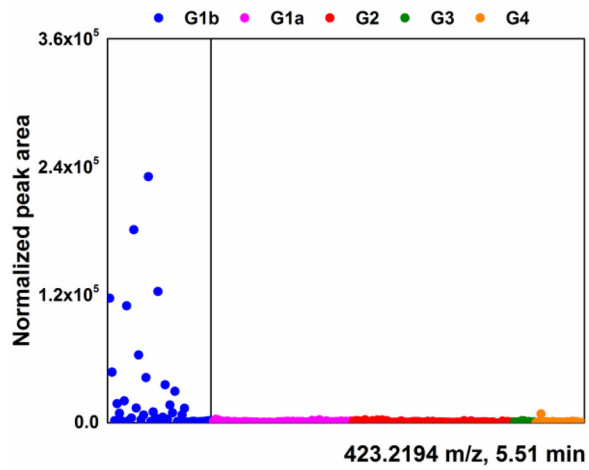
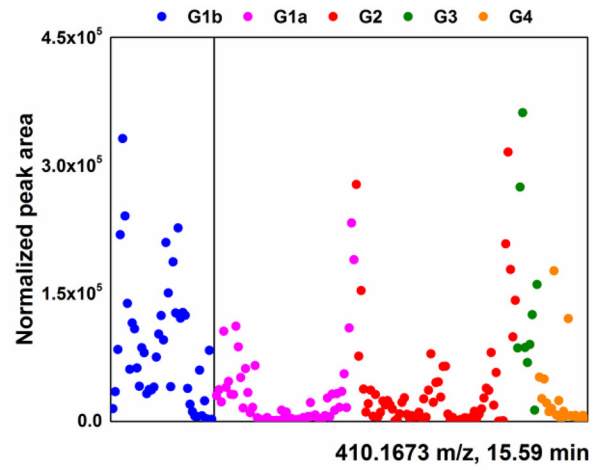
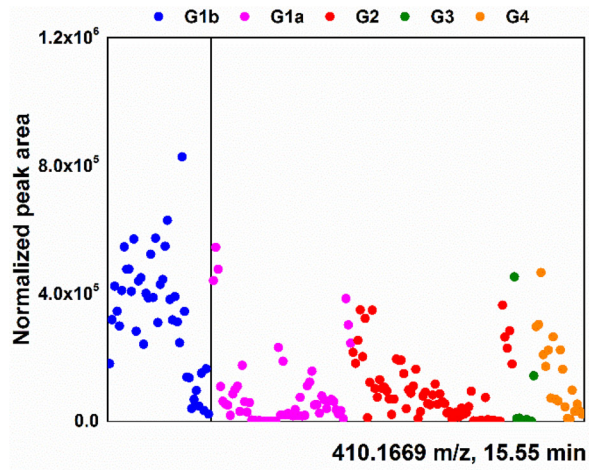
Cerebrospinal fluid metabolomic profiles can discriminate patients with leptomeningeal carcinomatosis from patients at high risk for leptomeningeal metastasis

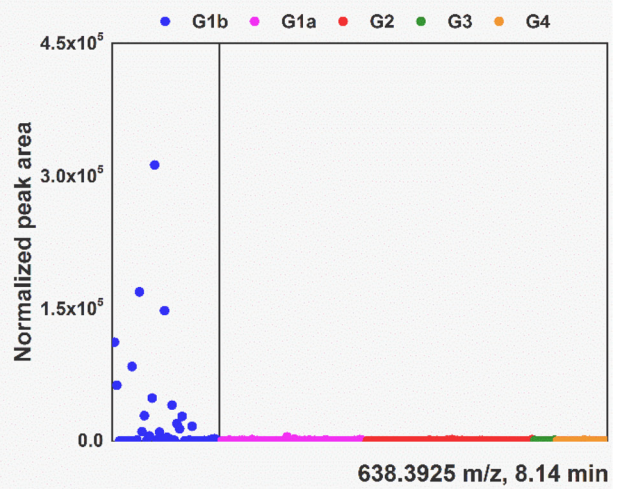
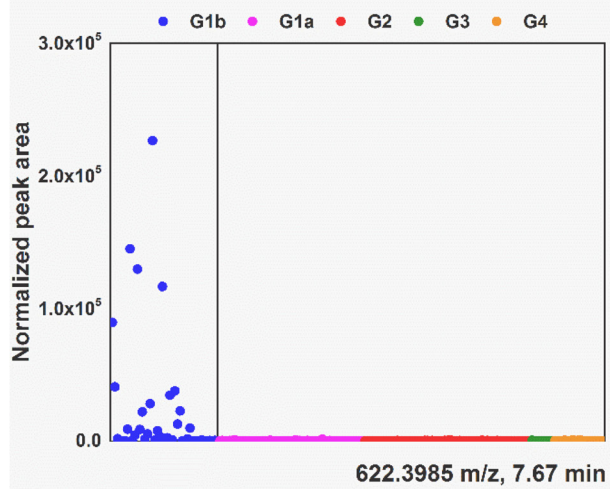
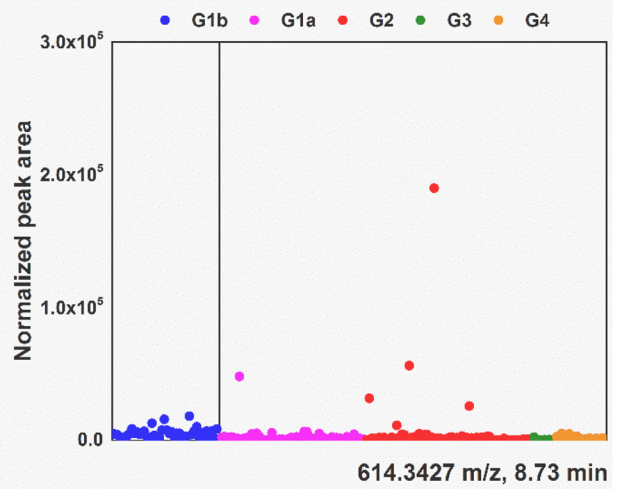
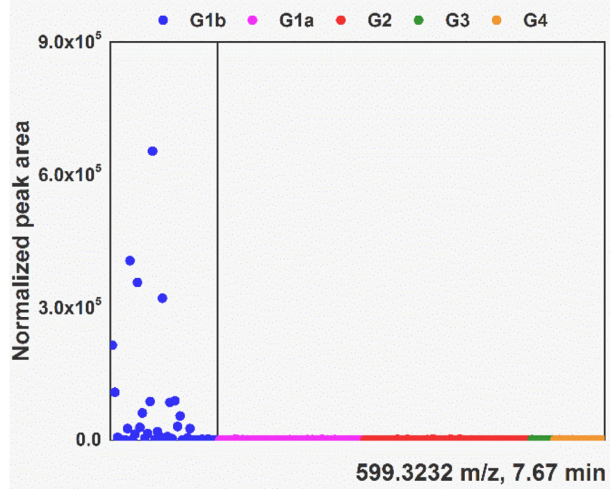
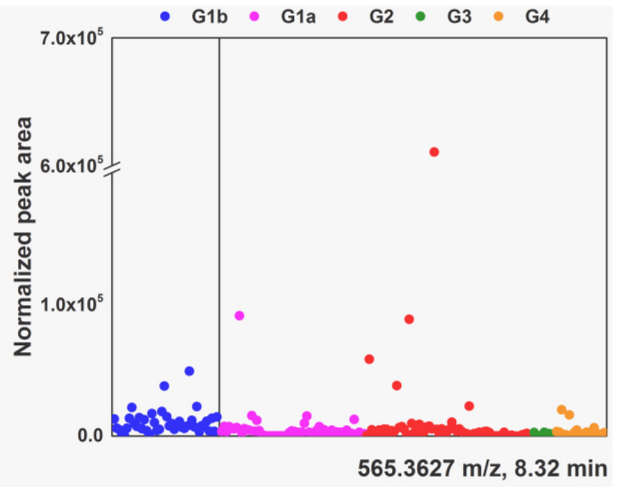
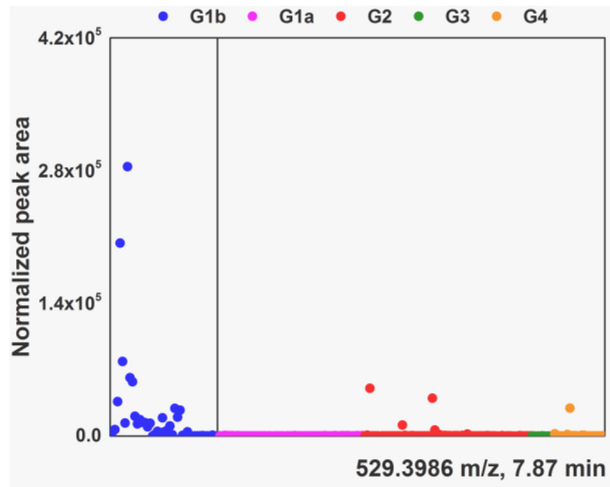
SUPPLEMENTARY MATERIALS

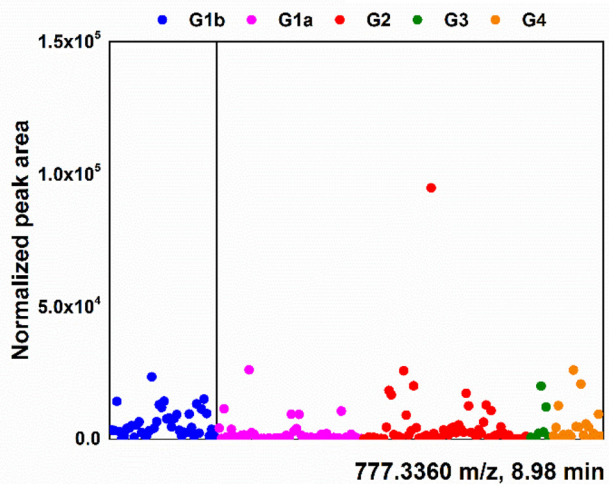
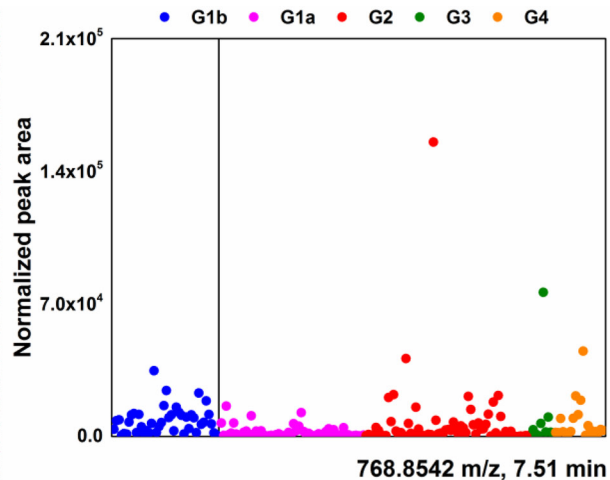
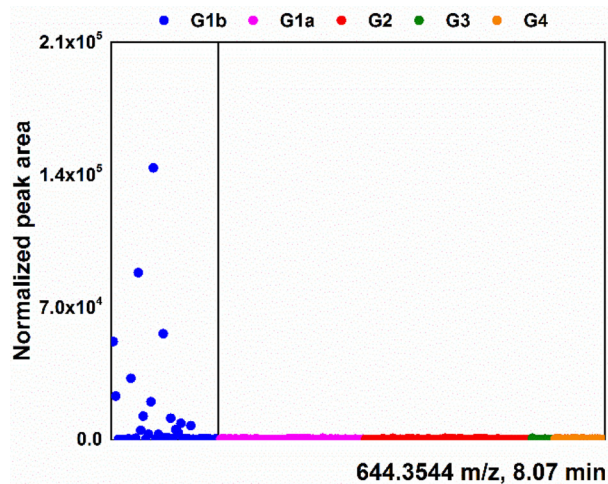




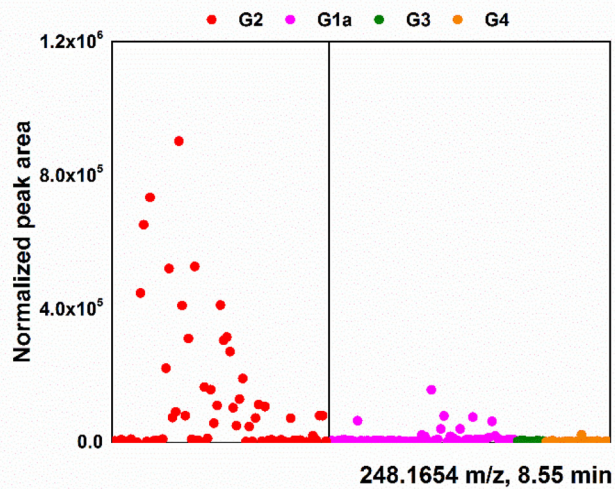
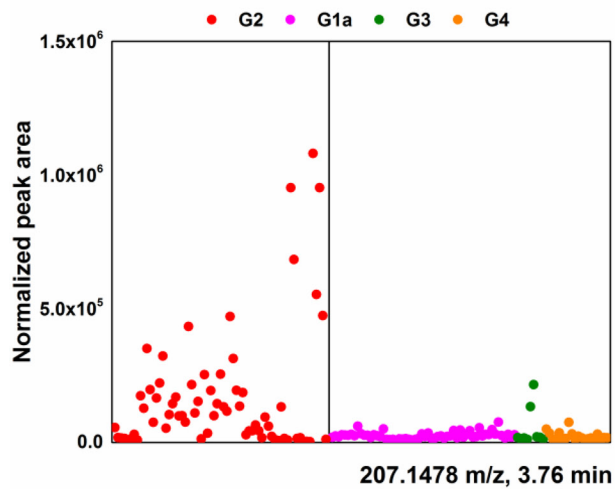
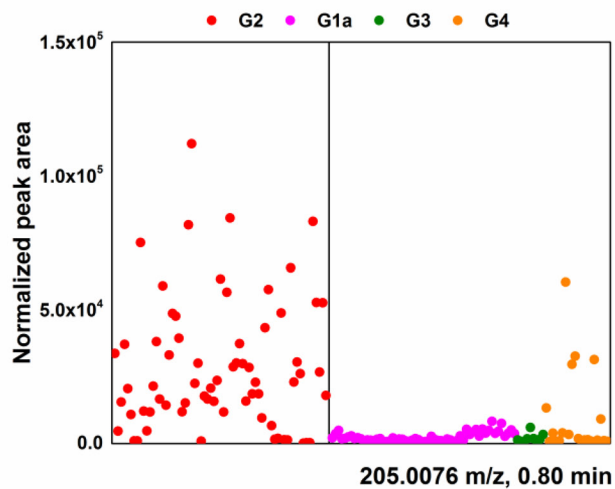
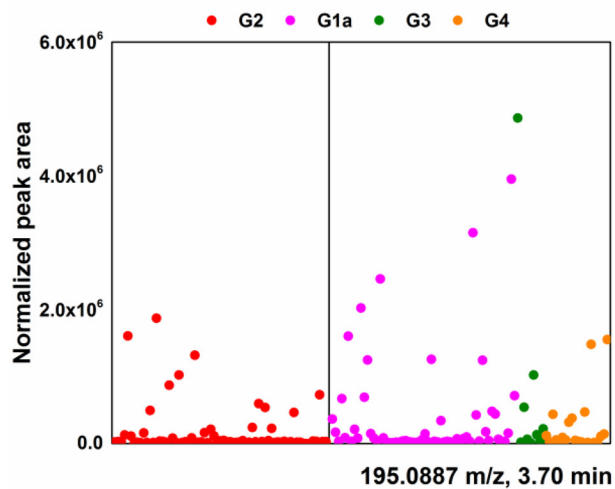
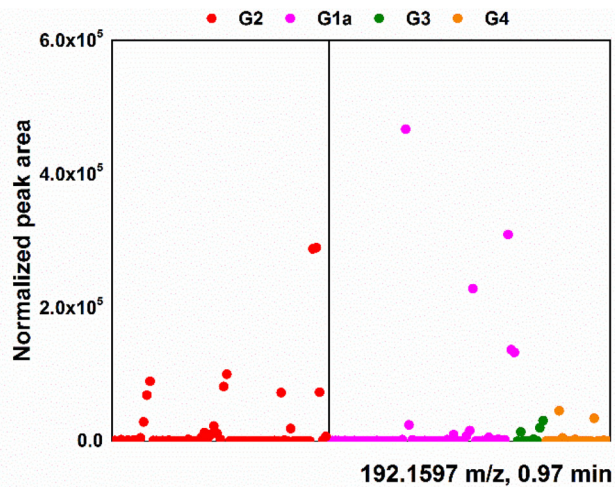
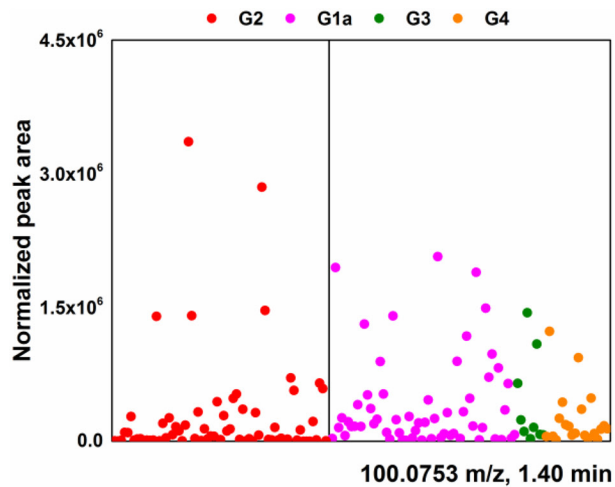


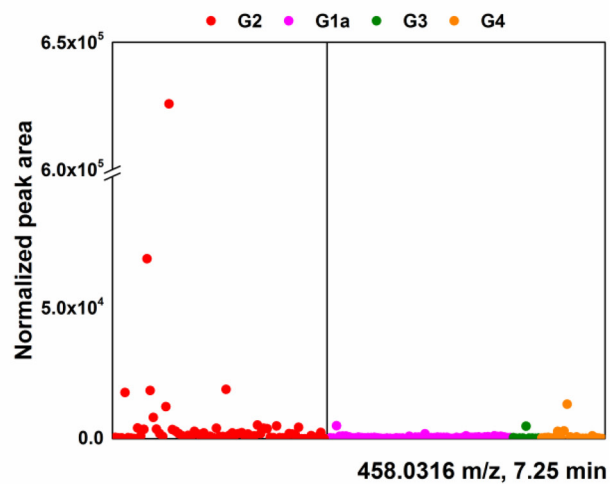
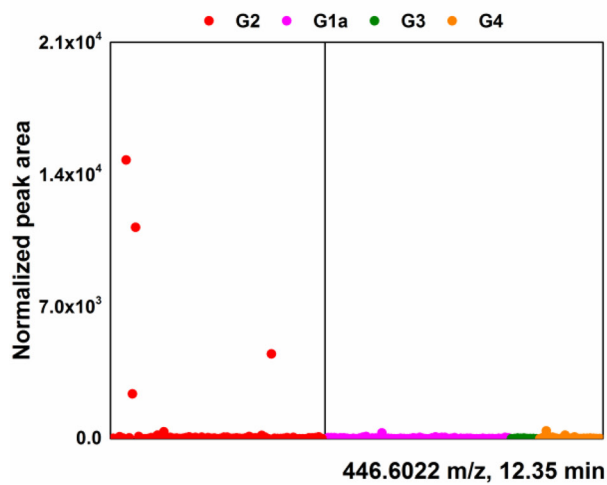
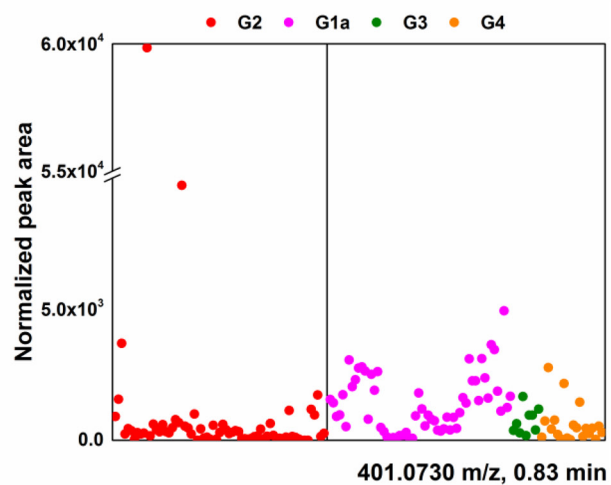
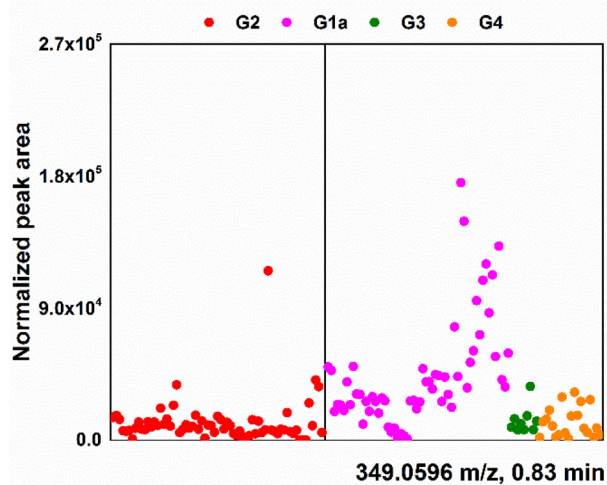
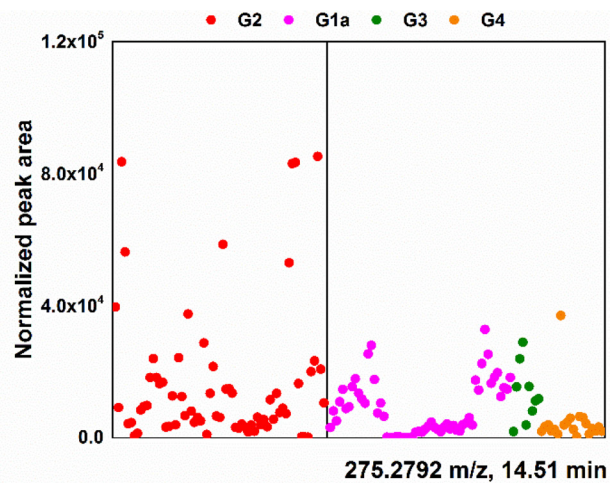
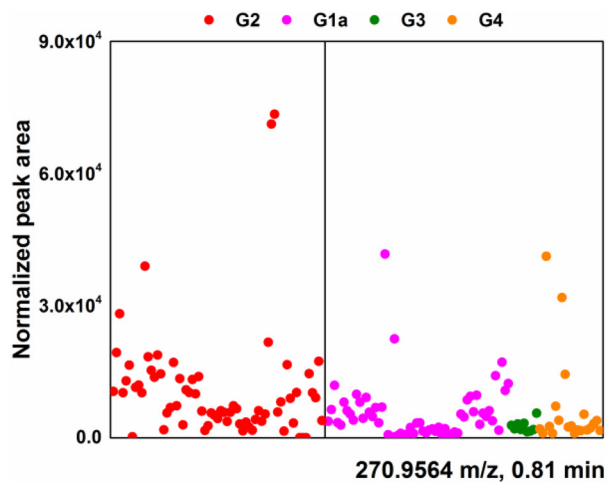


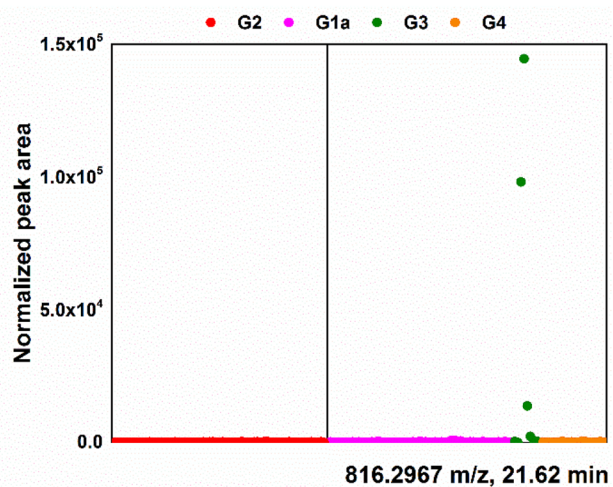
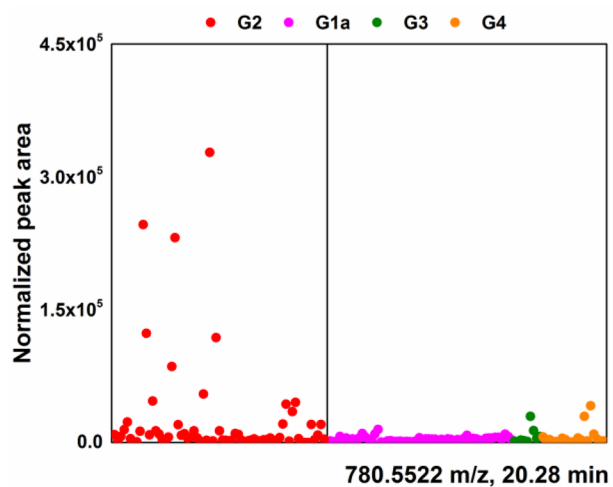
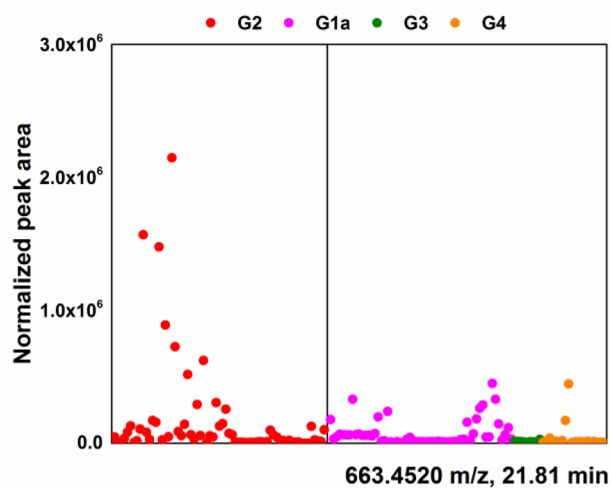
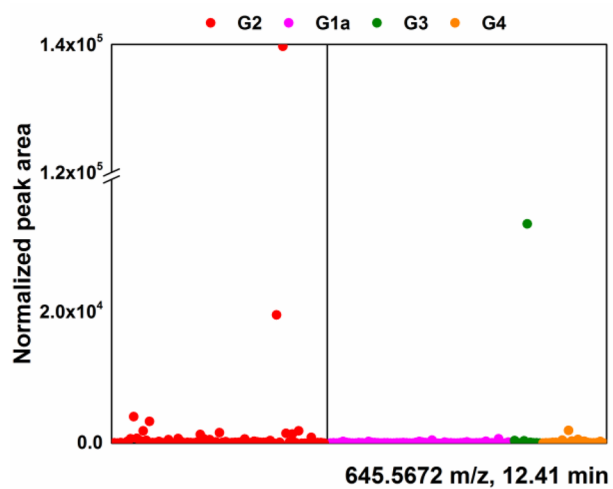
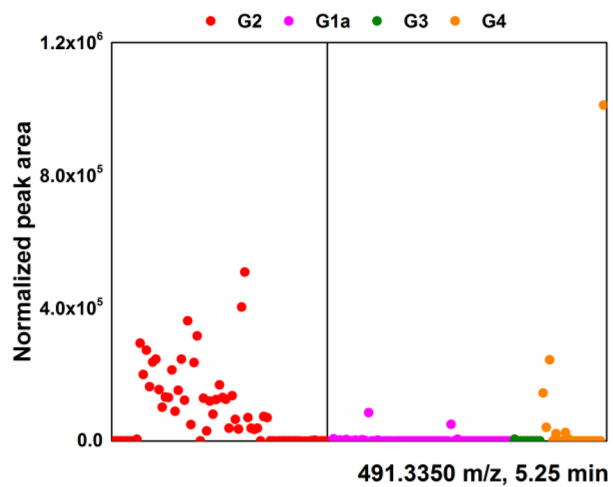
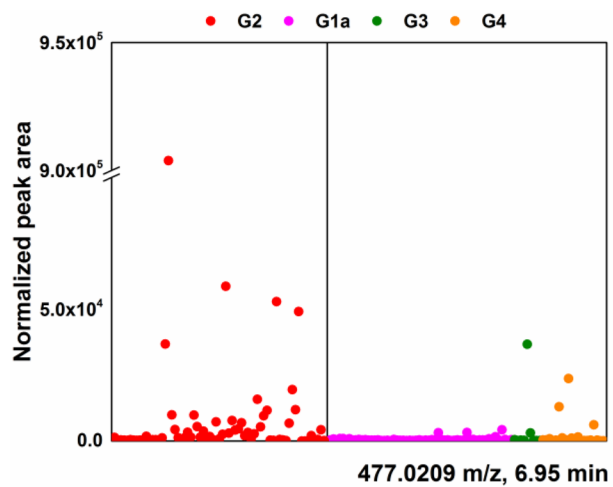


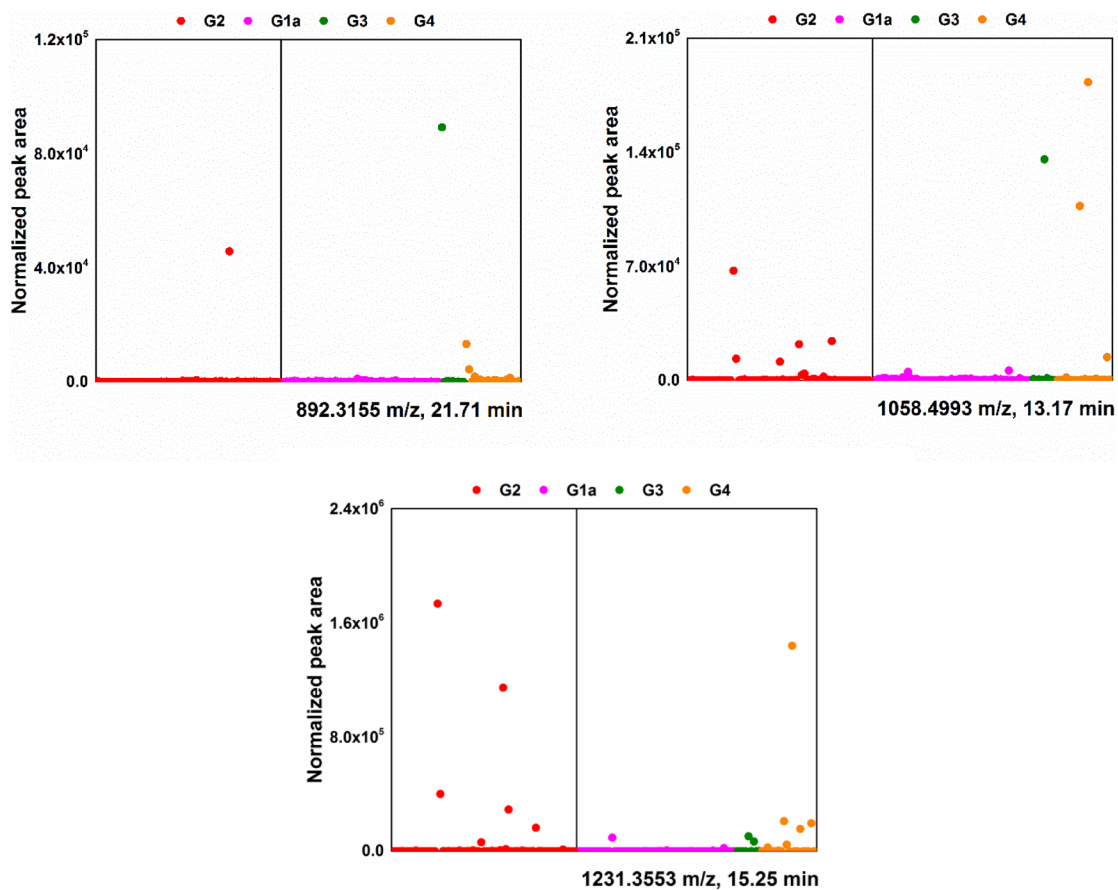


Supplementary Figure 1: Relative amounts of thirty-three low-mass ions discriminating cancer patients from patients without cancer. Normalized peak area (arbitrary unit) represents relative amounts of metabolites with a given m/z , in the CSF.









Supplementary Figure 2: Relative amounts of twenty-one low-mass ions discriminating patients with leptomenigeal metastasis from other groups of patients. Normalized peak area (arbitrary unit) represents relative amounts of metabolites with a given *m/z*, in the CSF.

Supplementary Table 1: Thirty-three low-mass ions discriminating cancer patients (groups of 1a, 2, 3 and 4) from patients without cancer (Group 1b). See_Supplementary_Table 1