

Proteasome stress sensitizes malignant pleural mesothelioma cells to bortezomib-induced apoptosis

Fulvia Cerruti¹, Genny Jocollé², Chiara Salio¹, Laura Oliva³, Luca Paglietti¹, Beatrice Alessandria¹,
Silvia Mioletti¹, Giovanni Donati⁴, Gianmauro Numico⁵, Simone Cenci³, Paolo Cascio^{1*}

¹ Department of Veterinary Sciences, University of Turin, Largo P. Braccini 2, 10095, Grugliasco, Turin, Italy. fulvia.cerruti@unito.it; chiara.salio@unito.it; luca.paglietti@edu.unito.it; beatrice.alessandria@edu.unito.it

² Medical Oncology Unit, Ospedale U. Parini, Viale Ginevra 3, 11100 Aosta, Italy; gennajiit@yahoo.it.

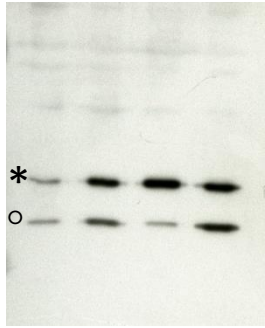
³ San Raffaele Scientific Institute, Division of Genetics and Cell Biology, Via Olgettina 60, 20132 Milan, Italy; oliva.laura@hsr.it; cenci.simone@hsr.it

⁴ Thoracic Surgery Unit, Ospedale U. Parini, Viale Ginevra 3, 11100 Aosta, Italy; gdonati@ausl.vda.it

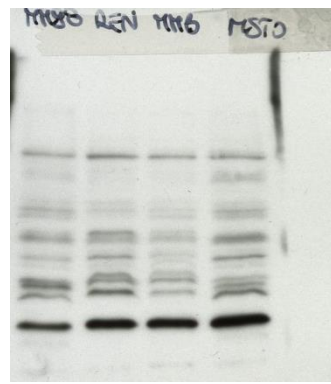
⁵ Medical Oncology, Azienda Ospedaliera SS Antonio e Biagio e C Arrigo, Via Venezia 16, 15121 Alessandria, Italy; gianmauro.numico@ospedale.al.it

Corresponding author: Paolo Cascio, ¹Department of Veterinary Sciences, University of Turin, Largo P. Braccini 2, 10095, Grugliasco, Torino, Italy.

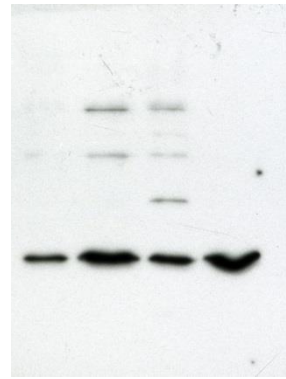
Tel: +39 0116 709109, Fax: +39 0116 709138, Email: paolo.cascio@unito.it



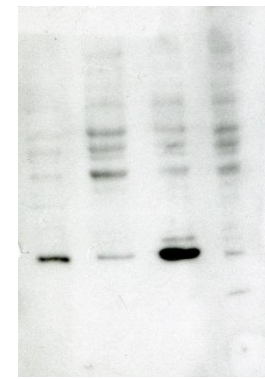
$\alpha 5^* / \beta 1^\circ$



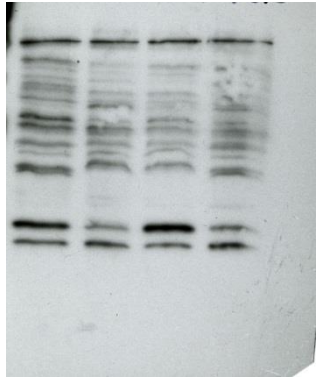
$\beta 2$



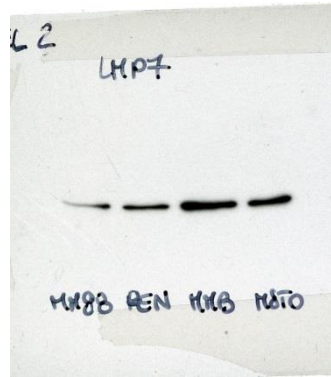
$\beta 5$



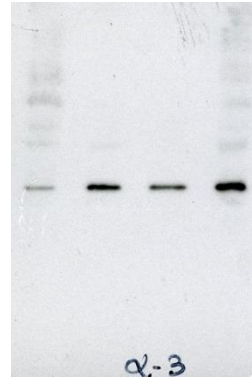
$\beta 1i$



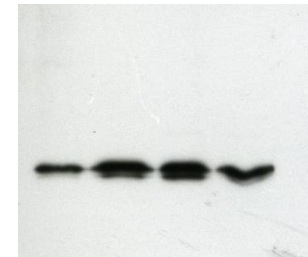
$\beta 2i$



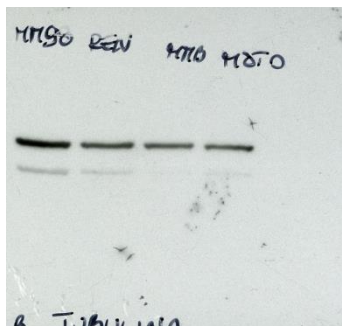
$\beta 5i$



$\alpha 3$

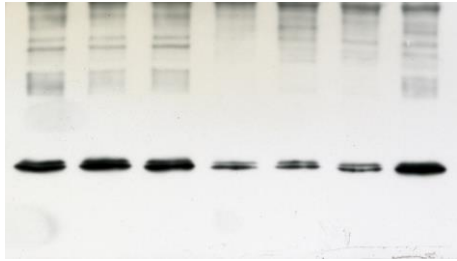


$\alpha 4$



α -tubulin

Figure 3



MSTO-211H, REN, MMB



MMB, MM98

Figure 4 A