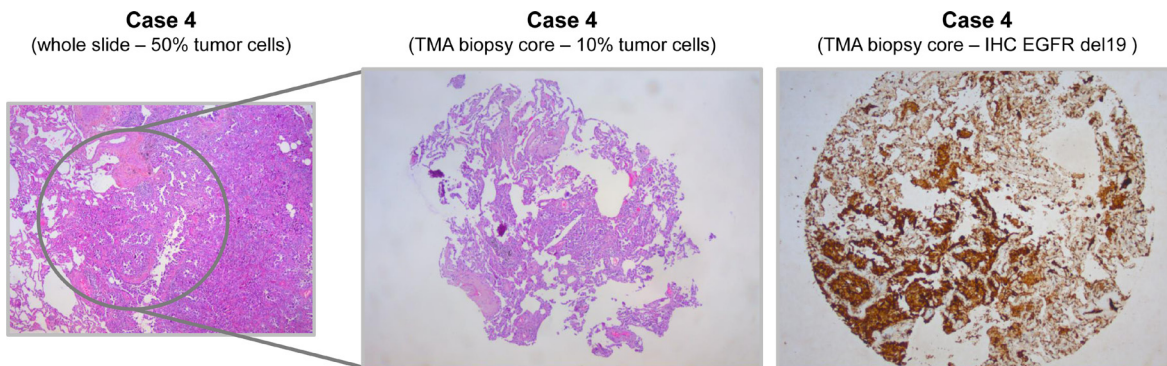
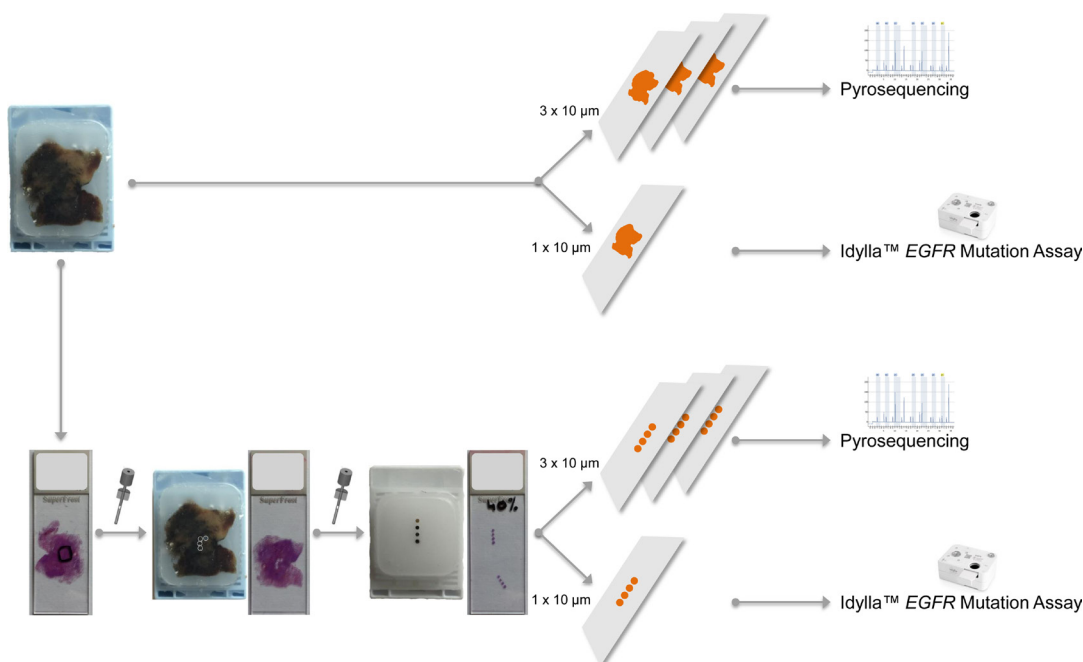


# Optimization of *EGFR* mutation detection by the fully-automated qPCR-based Idylla system on tumor tissue from patients with non-small cell lung cancer

## SUPPLEMENTARY MATERIALS



Supplementary Figure 1: Case 4 was analyzed either on whole tissue slides having 50% of tumor cells (HES staining, *left panel*), or on TMA biopsy core with 10% of tumor cells (HES staining, *middle panel*) by both pyrosequencing and Idylla™, as well as an immunohistochemistry (IHC) analysis with the mAb against EGFR del19 (*right panel*) on the TMA biopsy core.



Supplementary Figure 2: The workflow of different analyzed tumor samples.

**Supplementary Table 1: Idylla™ EGFR mutation assay performance on whole tissue sections and TMA biopsy cores.** See Supplementary\_Table\_1

**Supplementary Table 2: *EGFR* mutations tested for both technologies.** See Supplementary\_Table\_2