

Figure S1: Effect of wildtype, truncated and mutated *hlyA* enhancer regions on the secretion of HlyA1.

SDS-PAGE of non-concentrated supernatants of *hlyA1*-expressing strains carrying truncations and mutations within the *hlyA* enhancer region.

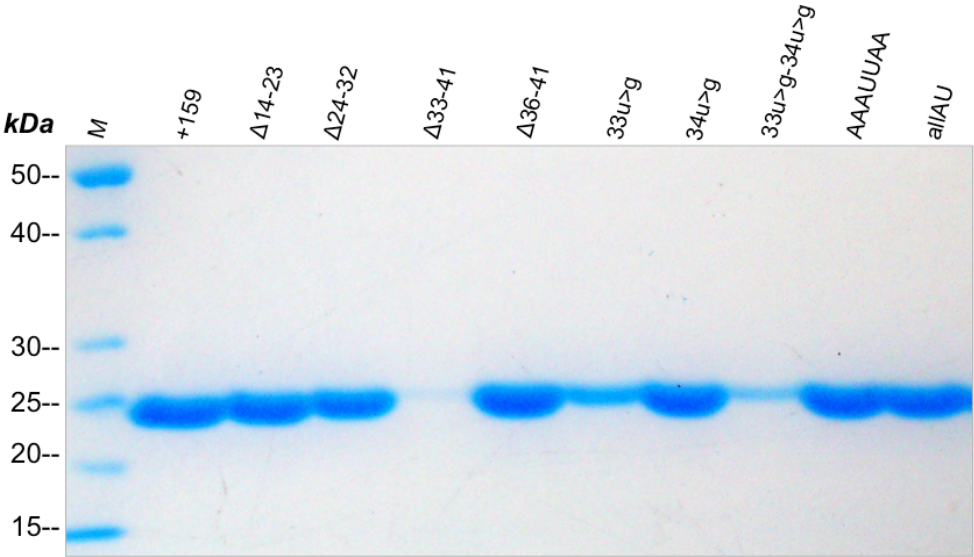


Figure S2: Investigation of the different expression systems with the enhancer region.

SDS-PAGE of non-concentrated supernatant obtained after expression of *hlyA1* gene containing 159 nt 5' enhancer region under lac (1) and T7 (2) promoter based expression systems.

