

Supplementary Figures S1-S4 for Barta, DE, Nesbitt SJ, Norell, MA. The evolution of the manus of early theropod dinosaurs is characterized by high inter- and intraspecific variation.



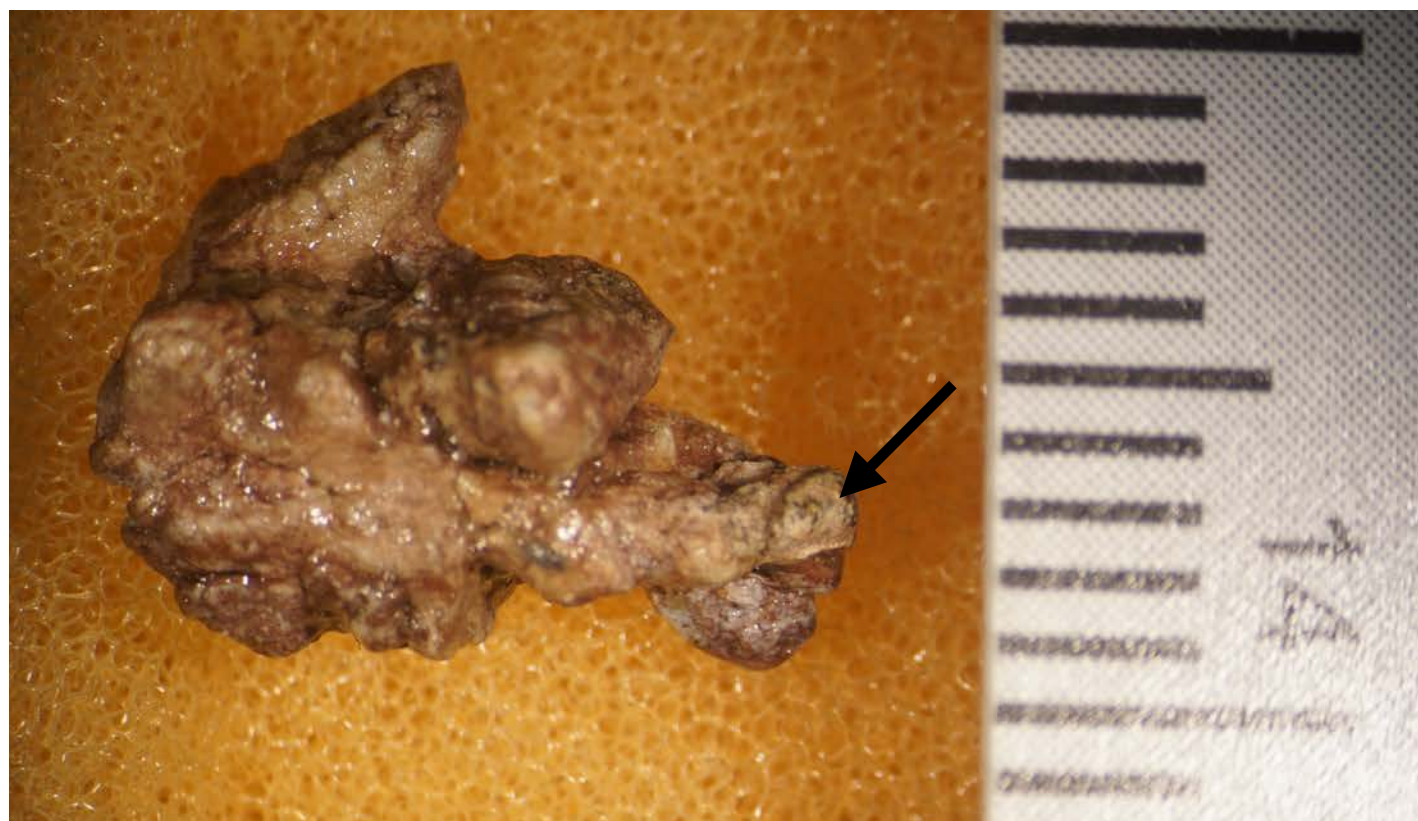
Supplementary Fig. 1 AMNH FARB 27435 *Coelophysis bauri*. Casts of left metacarpals and phalanges in lateral view.



Supplementary Fig. 2 AMNH FARB 27435 *Coelophysis bauri*. Casts of left metacarpals and phalanges in dorsal view.



Supplementary Fig. 3 AMNH FARB 27435 *Coelophysis bauri*. Casts of left metacarpals and phalanges articulated in laterodorsal view.



Supplementary Fig. 4 AMNH FARB 27435 *Coelophysis bauri*. Carpus in dorsal view. Arrow indicates fourth distal carpal. The identities of the other carpals are difficult to discern. Scale bar is marked at 1 mm increments.