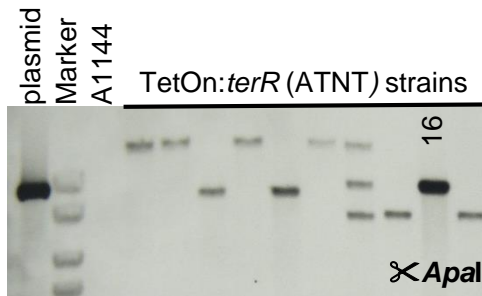
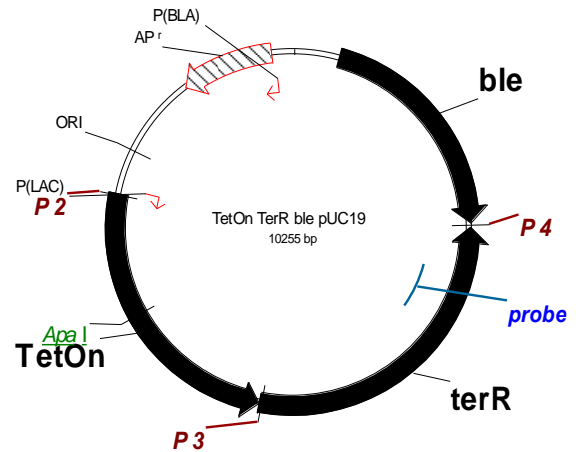


**A****B**

**Additional file 1: Southern blot analyses and plasmid map of construct used for generation of ATNT strains.** (A) Southern blot for identification of single copy integration strains. A digoxigenin labelled probe was used for hybridisation. Plasmid control and genomic DNA of parental strains and transformants were restricted with *ApaI*, which cuts once in the respective plasmid. The transformant used in subsequent analyses is numbered. (B) Plasmid map of the transformation construct. Position of oligonucleotides used in this study (P + number) as well as the position of the probe generated for Southern blot analysis and position of the restriction enzyme are shown. *ble* = phleomycin resistance cassette. TetOn = Tet-on promoter system. *terR* = *terR* gene including its native terminator sequence.