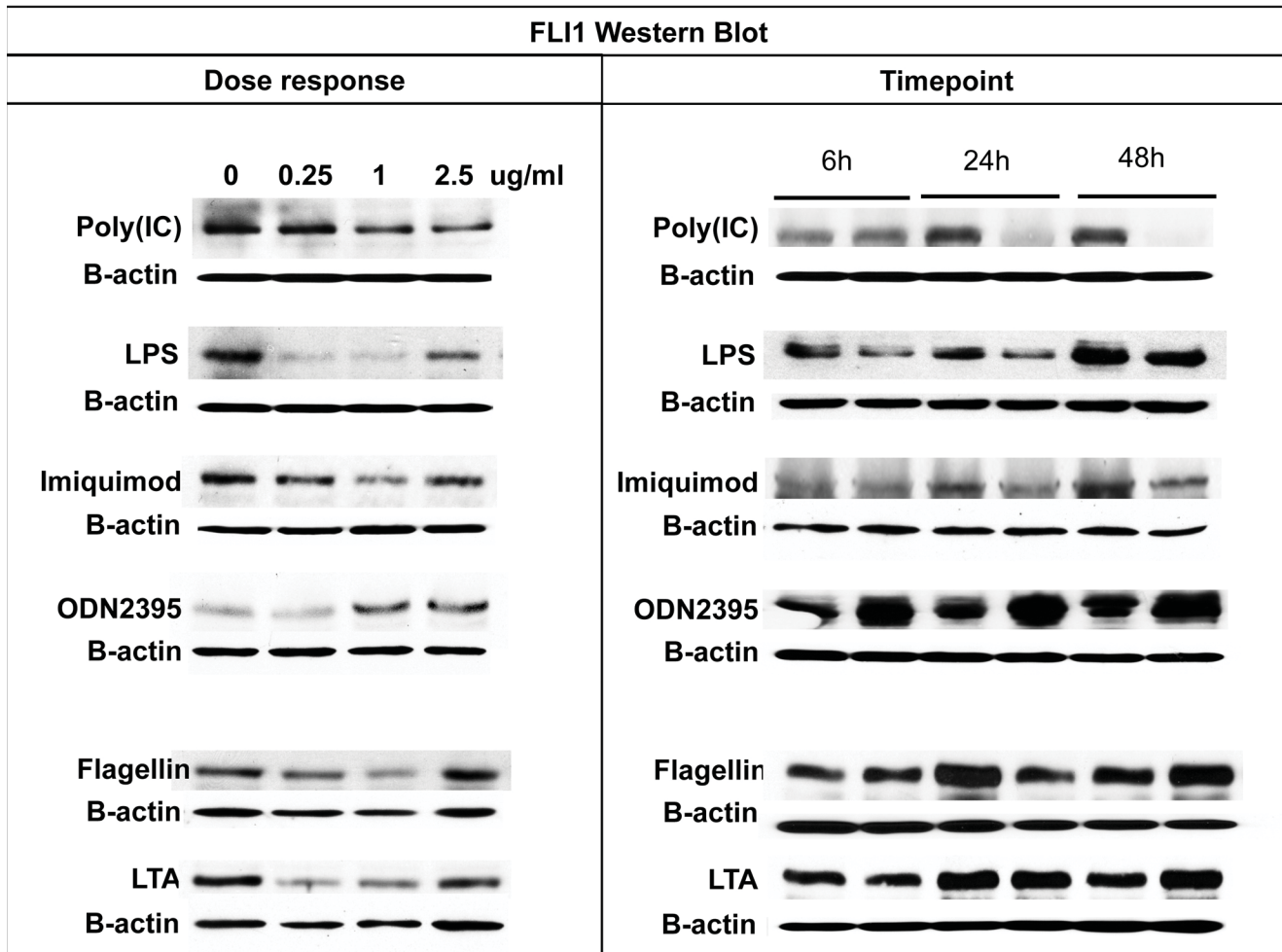


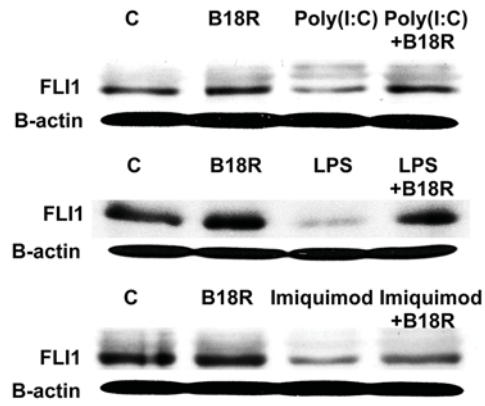
Supplemental Figure 1.



Supplemental Figure 1. Dose and time dependent FLI1 protein levels in response to selected TLR ligands.

Confluent HDMECs were treated with Poly(I:C), LPS, Imiquimod, ODN2395, Flagellin and LTA in a dose (left side) and time (right side) dependent manner. Cells were collected for analysis by Western Blot. Representative images are shown from 2 different experiments.

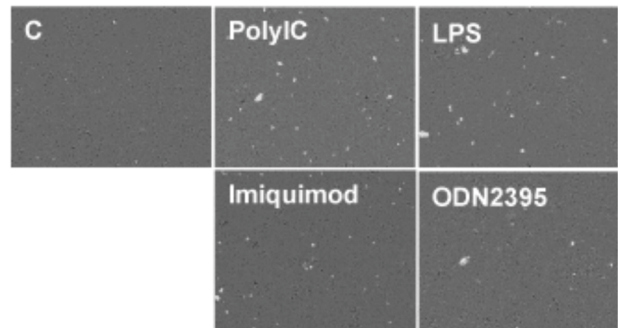
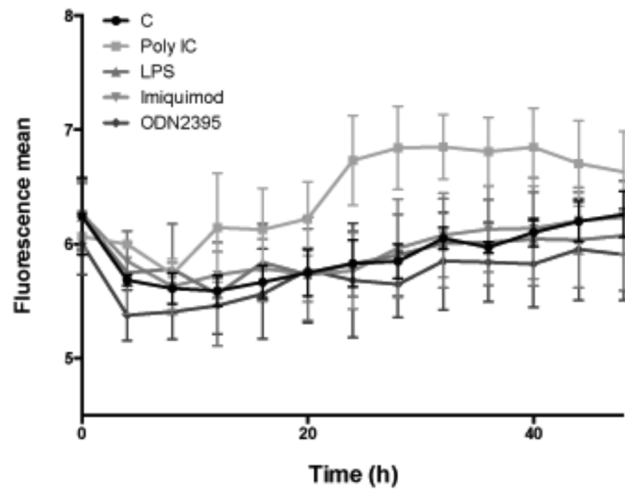
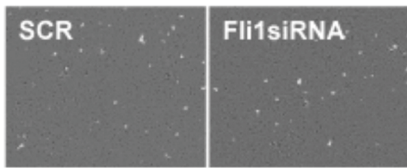
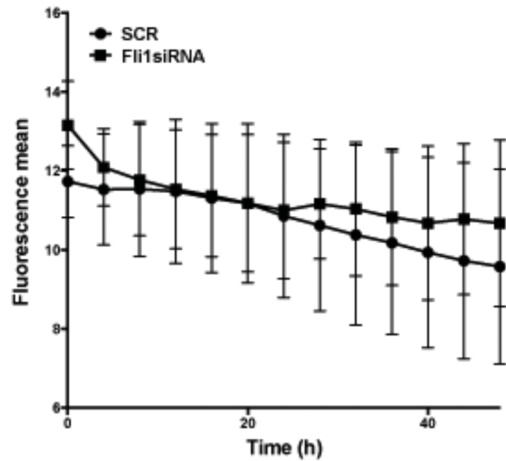
Supplemental Figure 2.



Supplemental Figure 2. Interferon alpha mediates Fli1 downregulation in HDMECs.

HDMECs were pretreated with interferon alpha inhibitor (B18R) for 1h and then treated with Poly(I:C), LPS and Imiquimod for another 24h. Fli1, protein level was analyzed by western blot. Representative western blot images are shown from two different experiments.

Supplemental Figure 3.



Supplemental Figure 3. The effect of FLI1 downregulation and selected TLR ligands on apoptosis of HDMECs.

Apoptosis was examined with the Essen BioScience IncuCyte™ Live-Cell Imaging system. 70-80% confluent cells on ImageLock 96-well plate were treated with SCR or Fli1siRNA (A) or Poly(I:C), LPS, Imiquimod and ODN2395 (B) and 50µl of the Annexin V reagent was added per well. Images were captured every 3h for total of 48h. Data represents n=3 well each point with 3 different cell cultures.

Supplemental Table I. Human primers used for real-time PCR

	Forward 5' to 3'	Reverse 5' to 3'
ET-1	gctcgtccctgatggataaaa	ccatacggacaacgtgct
FLI1	ggatggcaaggaactgtgtaa	ggttgattataggccagcagtg
FOXO3A	cttcaaggataagggcgaca	cgactatgcagtgacagggtg
TGF β 1	gcagcacgtggagctgta	cagccggtgctgaggta
TGF β 2	ccttctcccctccgaac	agagcacctgggactgtctg
TGF β 3	aagaagcgggctttggac	cgcacacagcagttctcc
SNAIL1	gctgcaggactctaaccaga	atctccggaggtgggatg