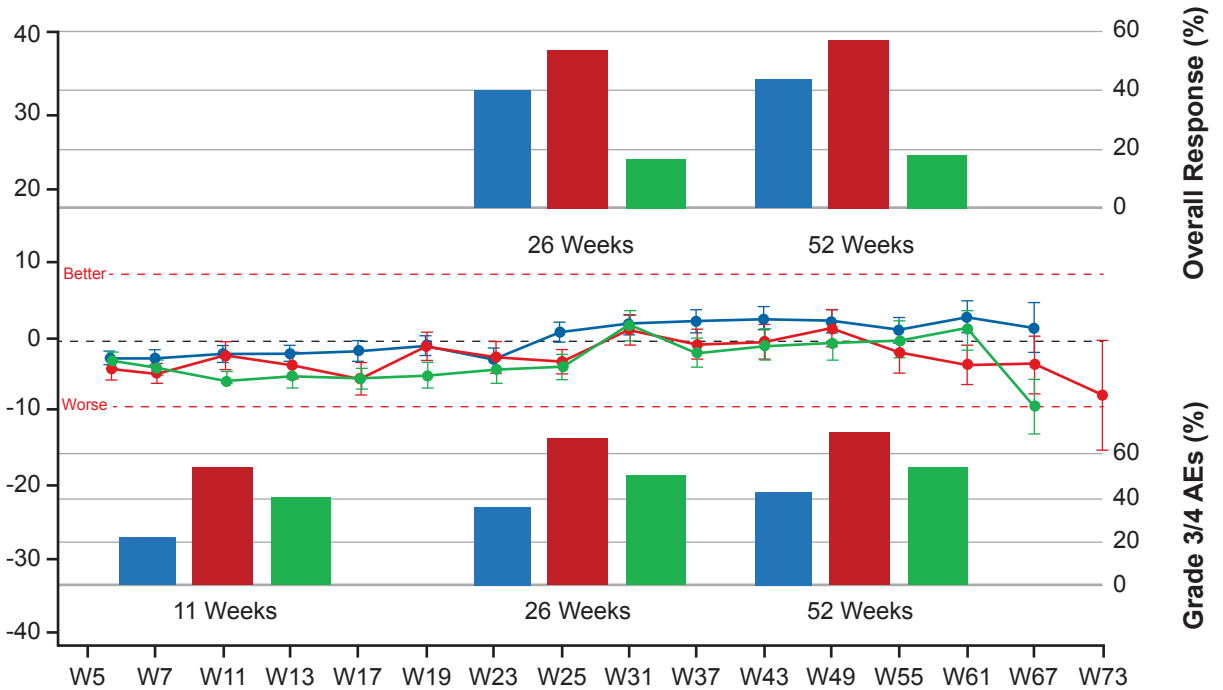


EORTC QLQ-C30 Global Health: Change From Baseline



N by treatment arm

	Week															
	W5	W7	W11	W13	W17	W19	W23	W25	W31	W37	W43	W49	W55	W61	W67	W73
Nivolumab	227	236	197	193	155	164	-	142	121	112	100	92	63	38	13	3
Nivolumab + ipilimumab	182	182	113	106	83	97	-	97	92	90	74	65	48	29	16	6
Ipilimumab	220	217	163	129	103	97	-	74	50	48	44	40	24	17	9	0