

## **Isoform-selective Hsp90 inhibition rescues model of hereditary open-angle glaucoma**

Andrew R. Stothert<sup>1†</sup>, Amirthaa Suntharalingam<sup>1†</sup>, Xiaolan Tang<sup>1,2</sup>, Vincent M. Crowley<sup>3</sup>, Sanket J. Mishra<sup>3</sup>, Jack M. Webster<sup>1</sup>, Bryce A. Nordhues<sup>1</sup>, Dustin J. E. Huard<sup>4</sup>, Christopher Passaglia<sup>2</sup>, Raquel L. Lieberman<sup>4</sup>, Brian S. J. Blagg<sup>3</sup>, Laura J. Blair<sup>1\*</sup>, John Koren III<sup>1\*</sup>, Chad A. Dickey<sup>1‡</sup>

Affiliations:

<sup>1</sup>Department of Molecular Medicine and Byrd Alzheimer's Research Institute, University of South Florida, Tampa, FL, 33613, USA,

<sup>2</sup>Department of Chemical & Biomedical Engineering, College of Engineering, University of South Florida, Tampa, FL, 33613, USA,

<sup>3</sup>Department of Medicinal Chemistry, The University of Kansas, Lawrence, KS, 66045, USA and

<sup>4</sup>School of Chemistry & Biochemistry, Georgia Institute of Technology, Atlanta, GA, 30332, USA

<sup>†</sup>These authors contributed equally to the development of the manuscript

<sup>‡</sup>Deceased November, 2016.

\*Corresponding Authors:

Laura J. Blair

Assistant Professor

USF Health Byrd Institute

4001 E. Fletcher Ave., MDC 36

Tampa, FL 33613

(813)396-0639

[lblair@health.usf.edu](mailto:lblair@health.usf.edu)

John Koren III

Research Associate

USF Health Byrd Institute

4001 E. Fletcher Ave., MDC 36

Tampa, FL 33613

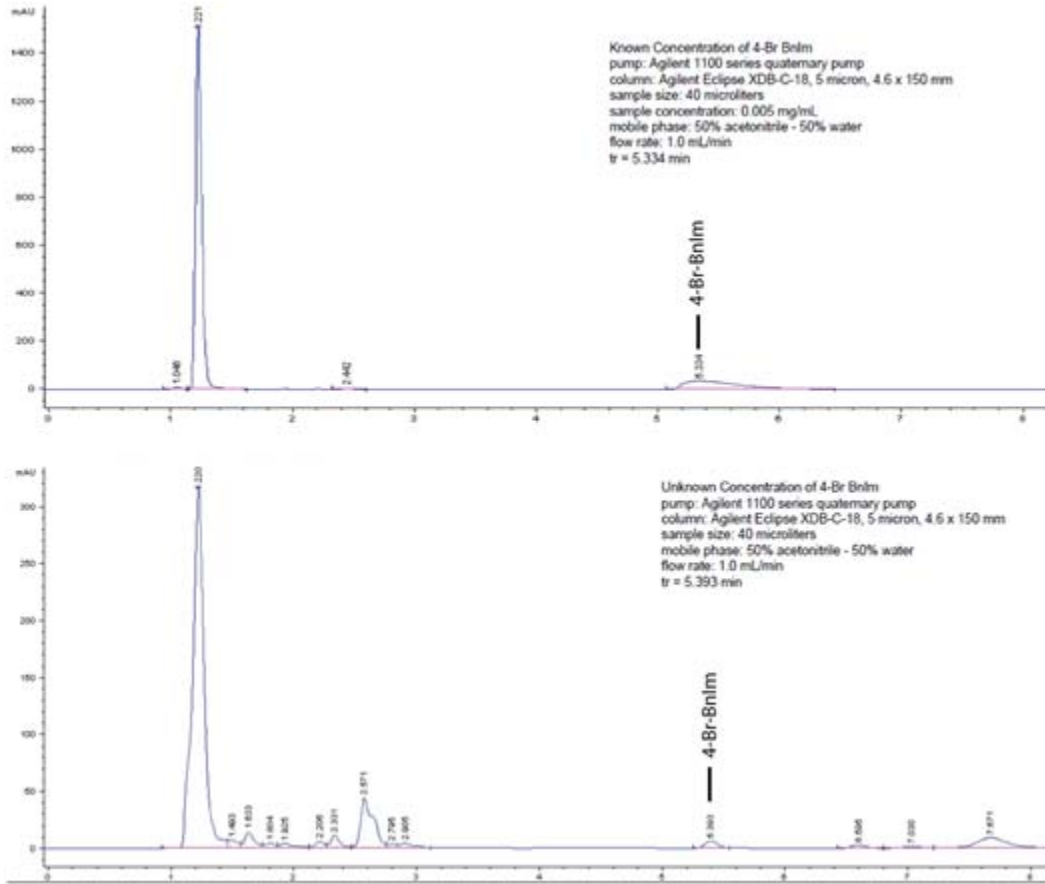
(813)396-0639

[jkoren@health.usf.edu](mailto:jkoren@health.usf.edu)

**Keywords:** GRP94, glaucoma, myocilin, chaperones, Hsp90

## Extended Data

### Extended Data Figure 1: Representative HPLC traces used for quantification of 4-Br-BnIm



Upper trace represents one of the 4-Br-BnIm samples of known concentration that made up the standard curve. The lower trace represents an eye extract containing 4-Br-BnIm. The solvent front (MeOH) can be seen at 1.2 min and 4-Br-BnIm at ~5.3 minutes.

**Extended Data Table 1: Crystallographic statistics**

	<b>NΔ41 in complex with 4-Br-BnIm</b>
<b>Data collection</b>	
Space group	P 2 <sub>1</sub> 2 <sub>1</sub> 2 <sub>1</sub>
Cell dimensions	
<i>a</i> , <i>b</i> , <i>c</i> (Å)	65.237    84.42 95.473
<i>a</i> , <i>b</i> , <i>γ</i> (°)	90 90 90
Resolution (Å)	47.74 - 2.707 <sup>a</sup> (2.803 - 2.707)
<i>R</i> <sub>merge</sub>	0.121 (0.663)
<i>I</i> / <i>σ</i> ( <i>I</i> )	22.11 (4.41)
<i>CC</i> <sub>1/2</sub>	0.999 (0.954)
Completeness (%)	97.71 (83.38)
Redundancy	14.6 (14.9)
<b>Refinement</b>	
Resolution (Å)	2.7
No. reflections	217928 (21838)
<i>R</i> <sub>work</sub> / <i>R</i> <sub>free</sub>	0.1960 (0.2701)/ 0.2839 (0.3822)
No. atoms	
Protein	3307
Ligand/ion	110
(specify/describe)	
Water	38
<i>B</i> factors	
Protein	51.6
Ligand/ion	58.5
Water	37.3
R.m.s. deviations	
Bond lengths (Å)	0.009
Bond angles (°)	1.26

<sup>a</sup> Values in parentheses are for highest-resolution shell.