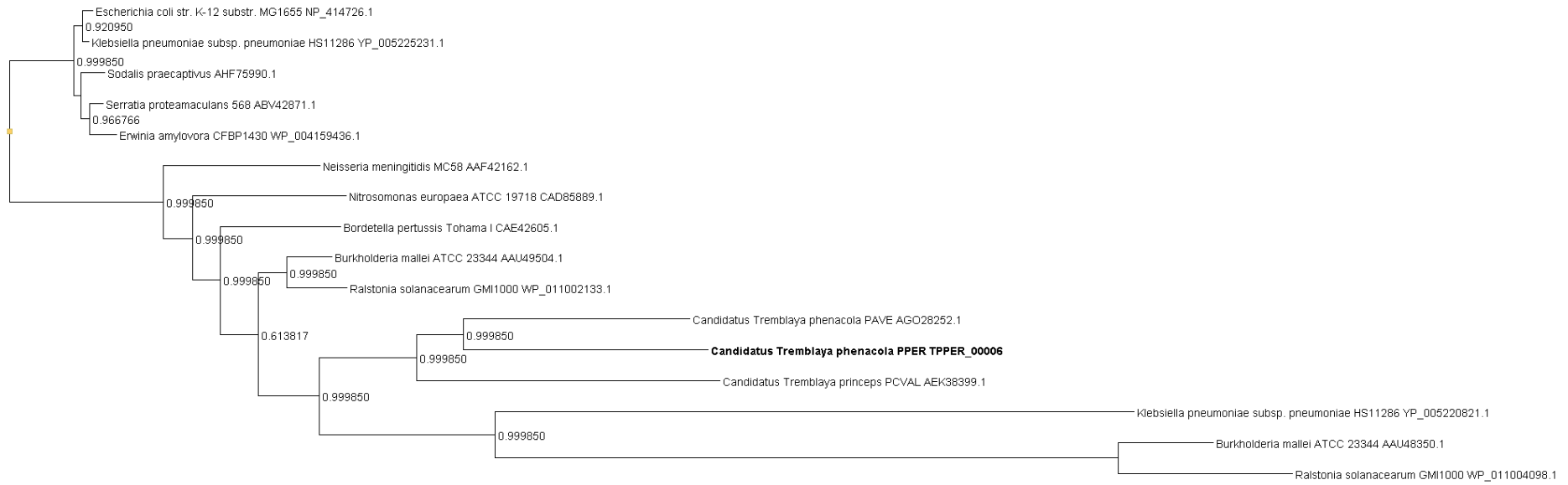


Figure S5.A. Contig 1

dnaE (beta)



cysS (gamma)

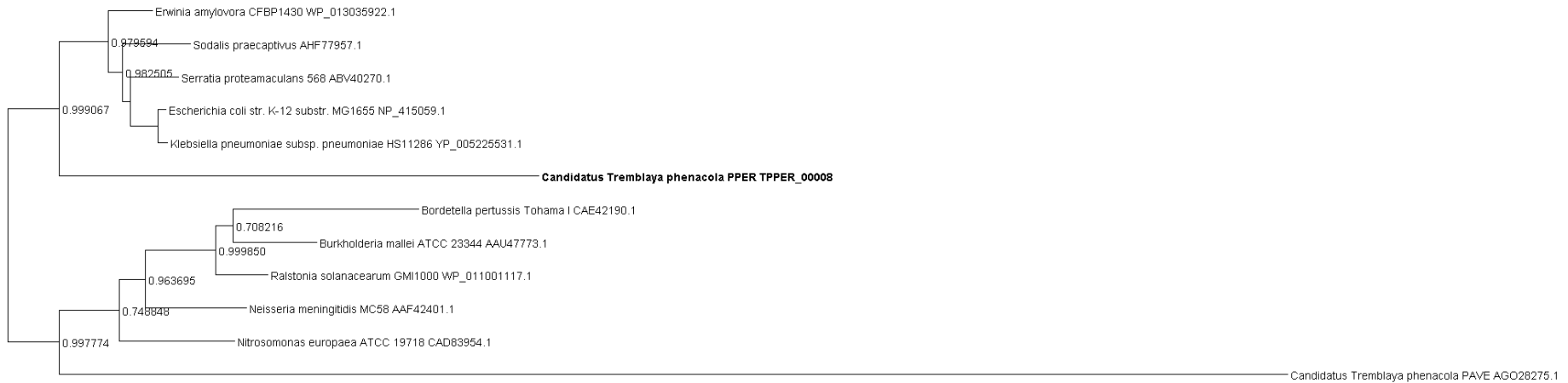
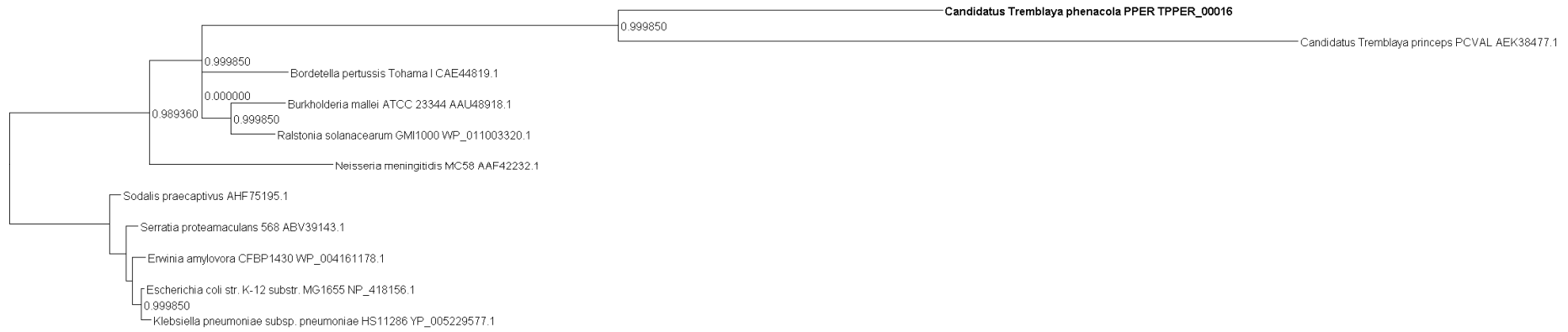


Figure S5.B. Contig 2

dnaN (beta)



rpoD (beta only by Phylomizer)



tiS (gamma)

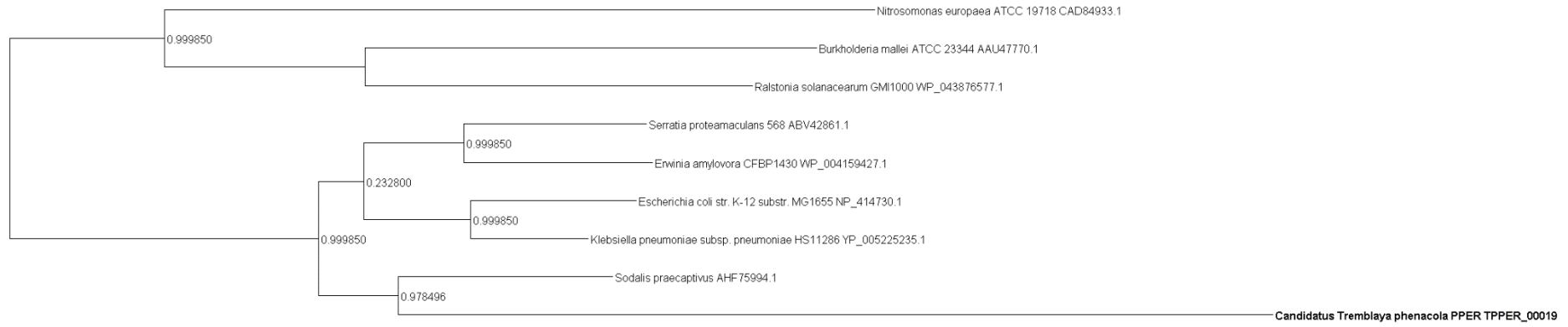
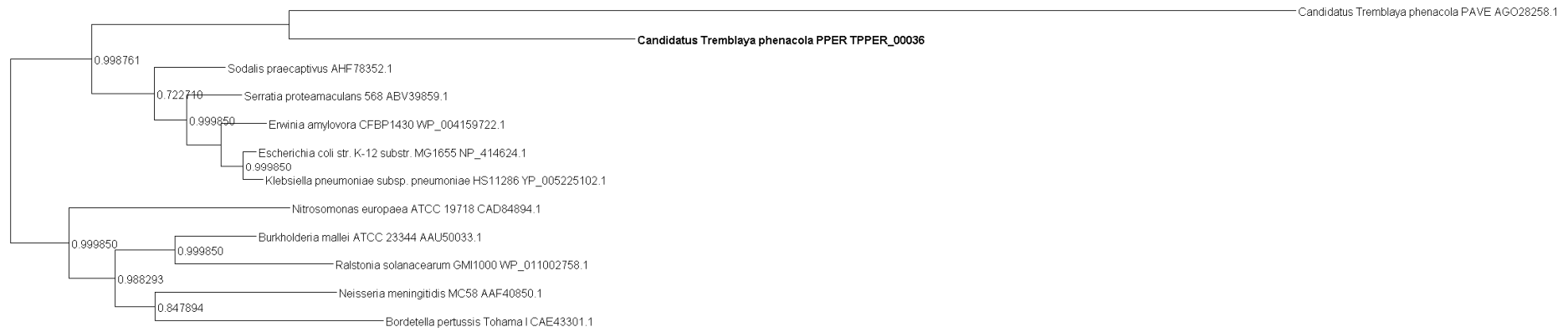


Figure S5.C. Contig 3

rsmH (gamma)



lon (beta)

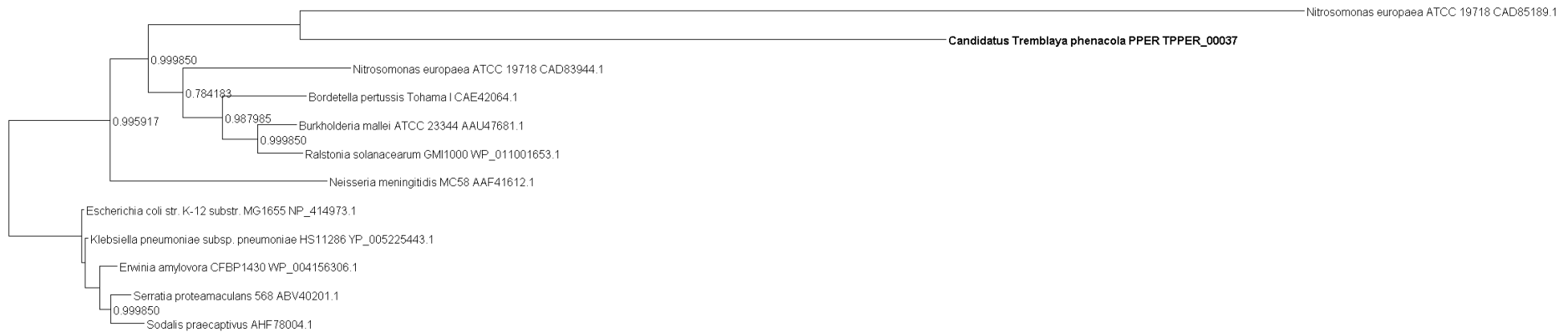
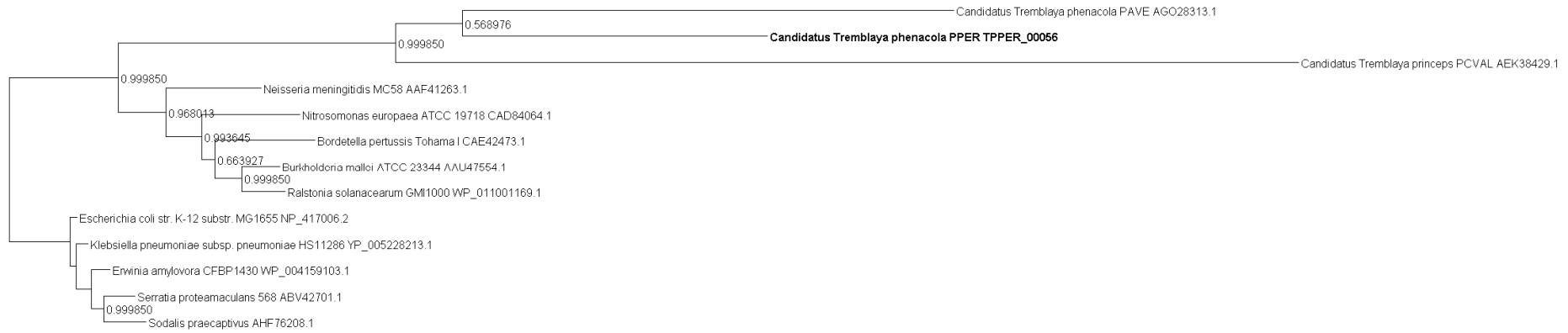
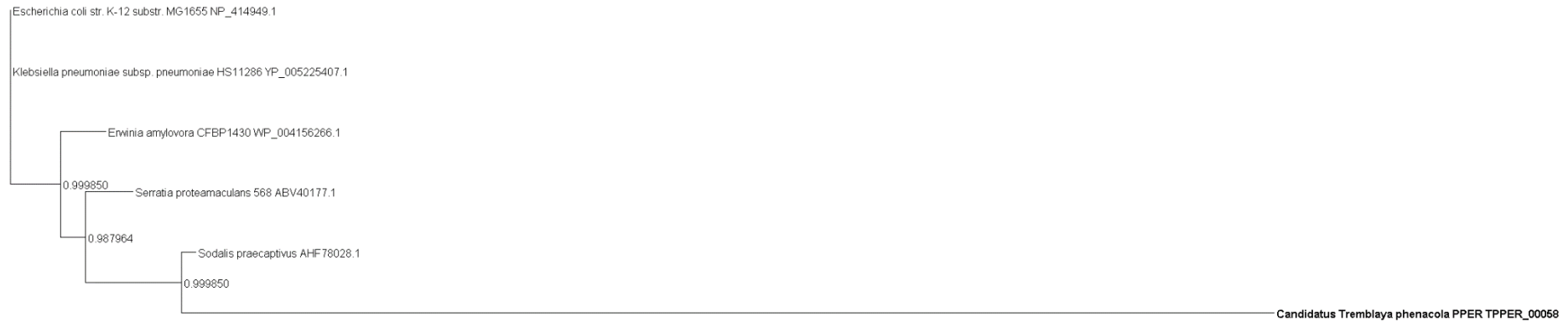


Figure S5.D. Contig 7

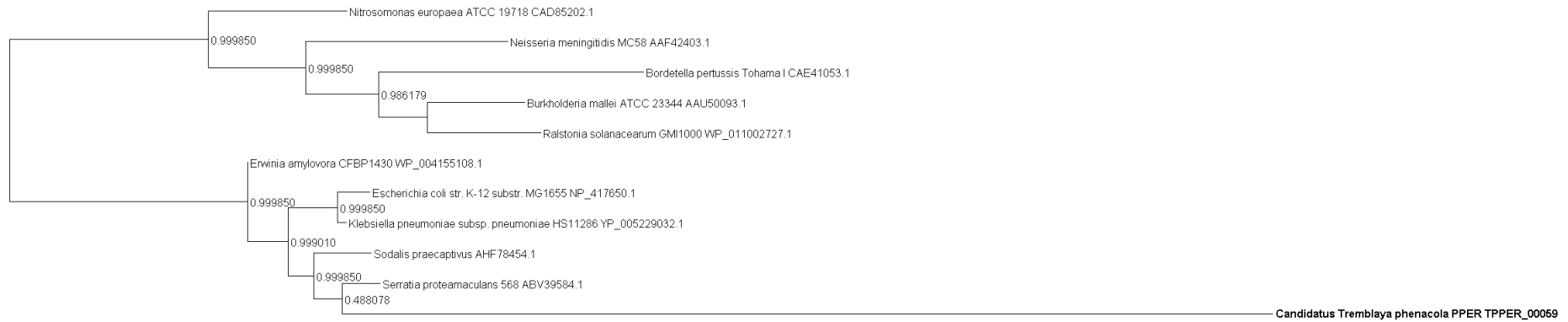
der (beta)



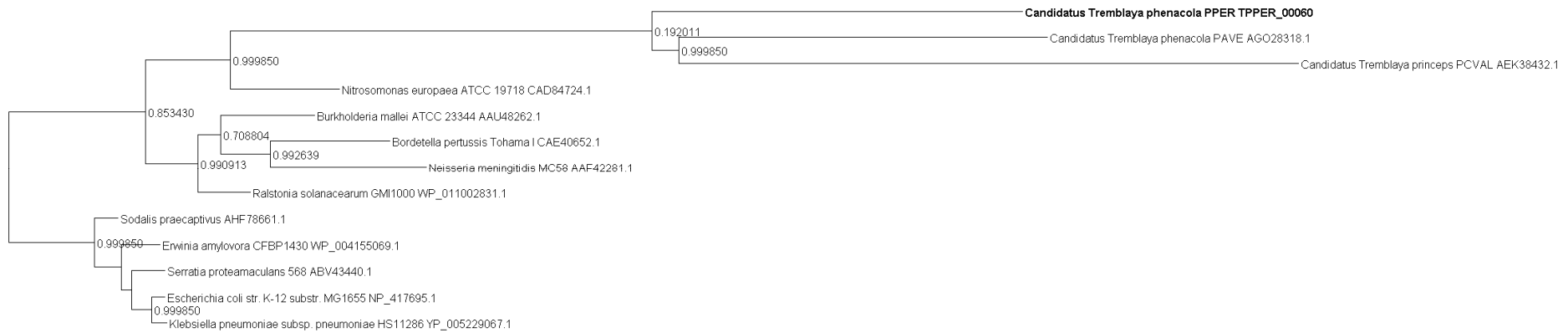
ribE (gamma)



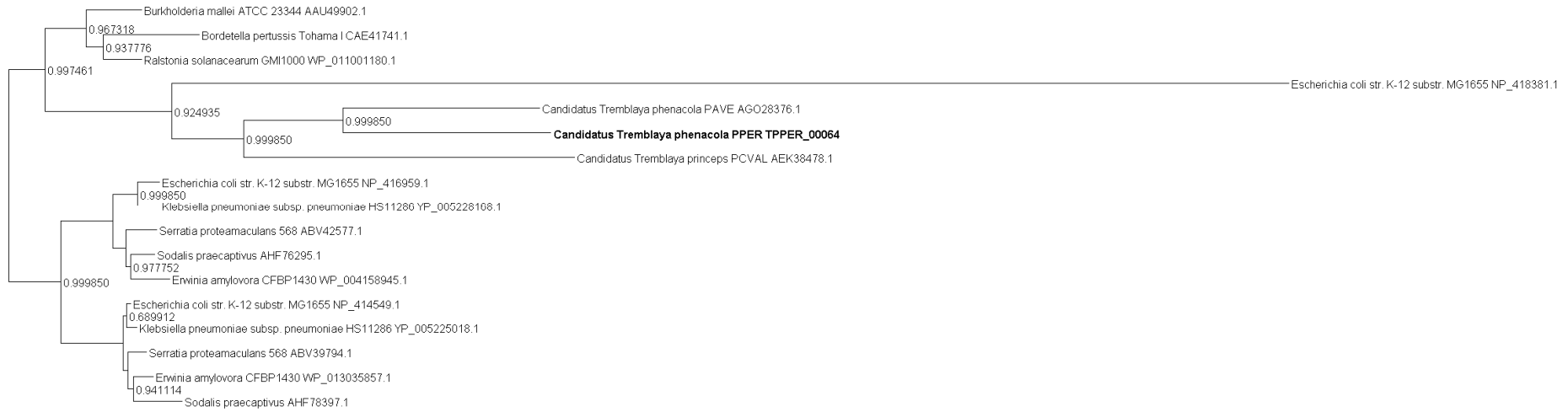
obg (gamma)



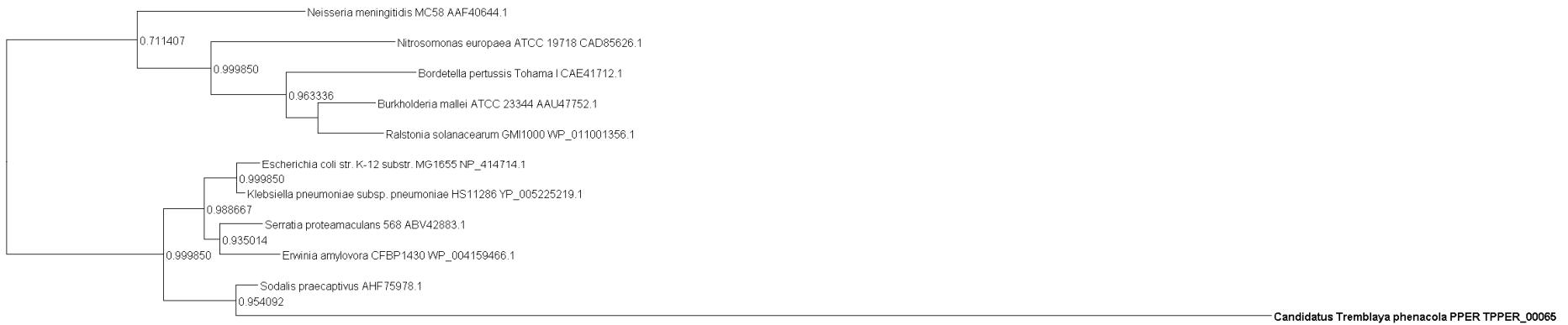
sspB (beta)



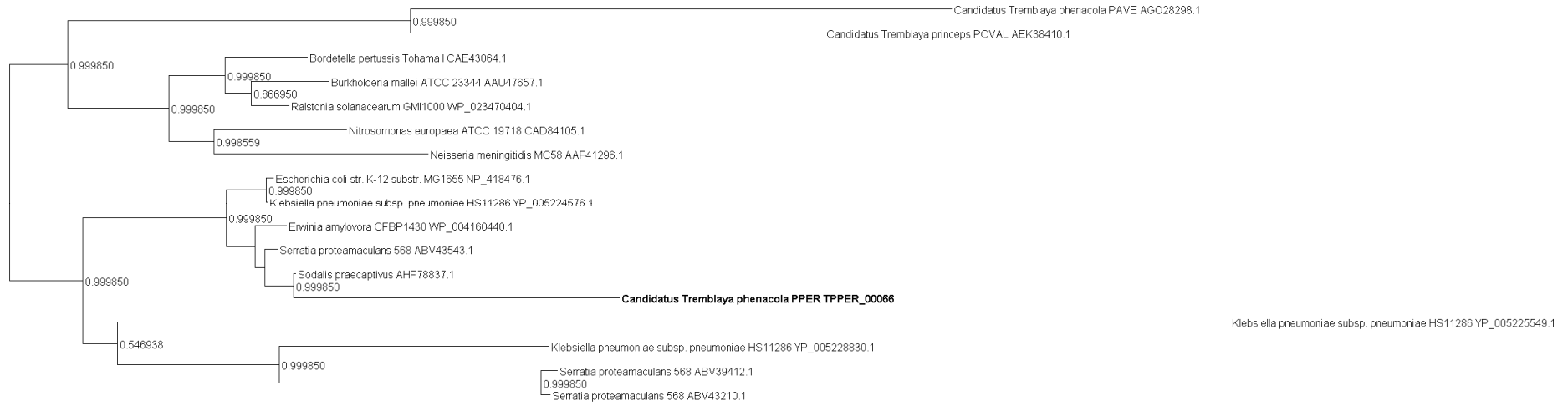
tal (beta)



frr (gamma)



dnaB (gamma)

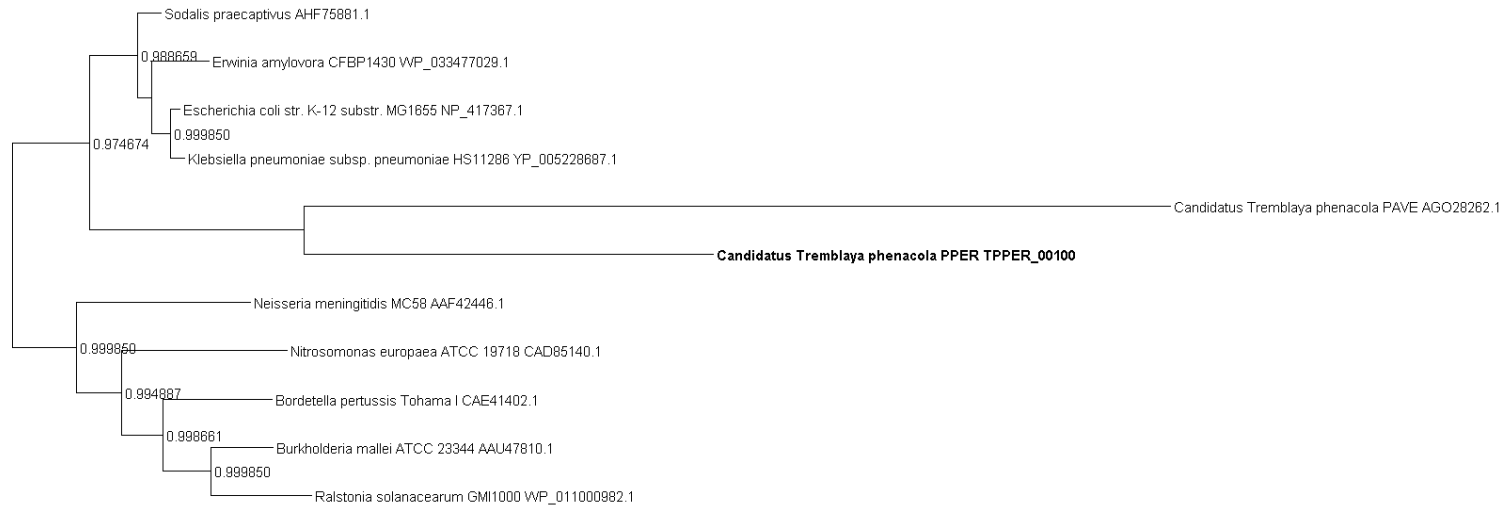


rpmA (beta only by Phylomizer)



Figure S5.E. Contig 11

prfB (gamma)



rpmB (beta only by Phylomizer)

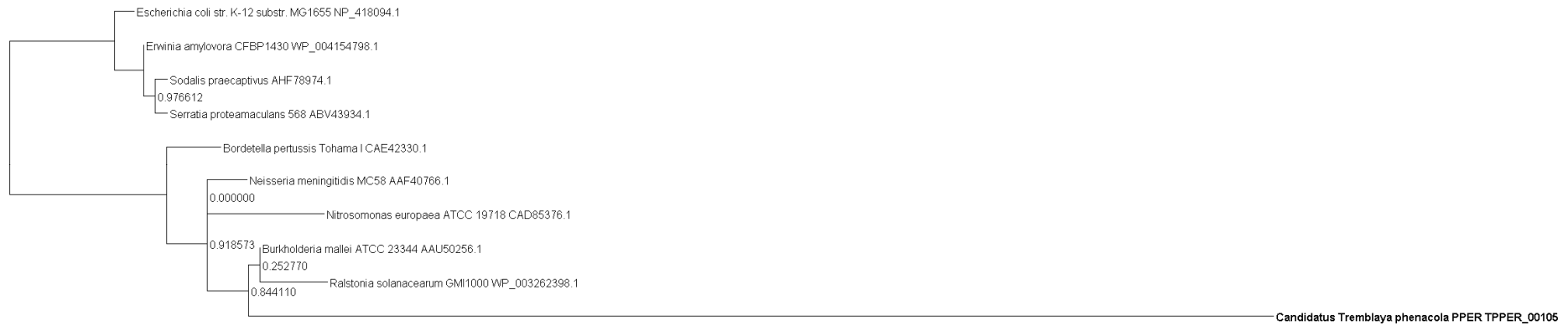
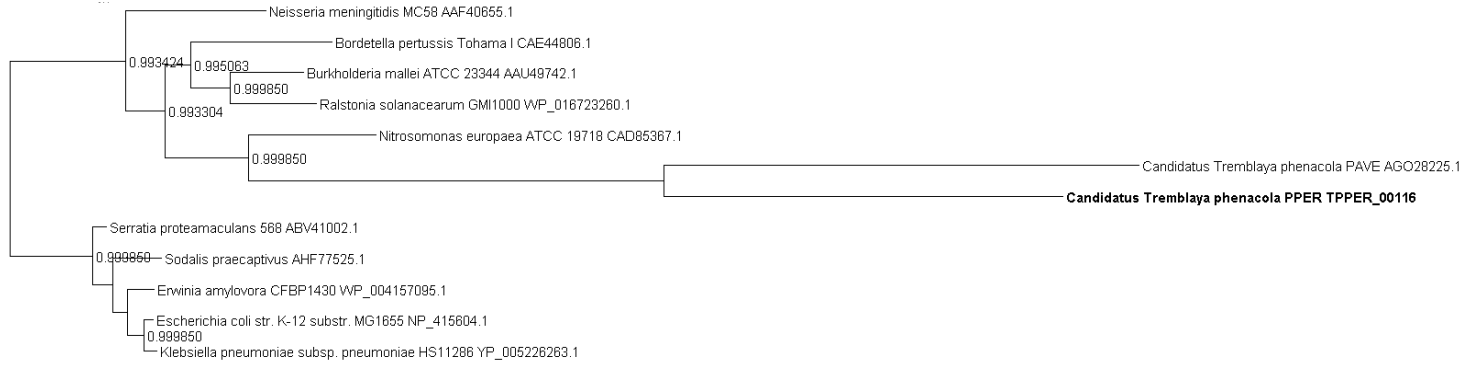


Figure S5.F. Contig 12

TPPER_00116 (beta)



ligA (gamma)

