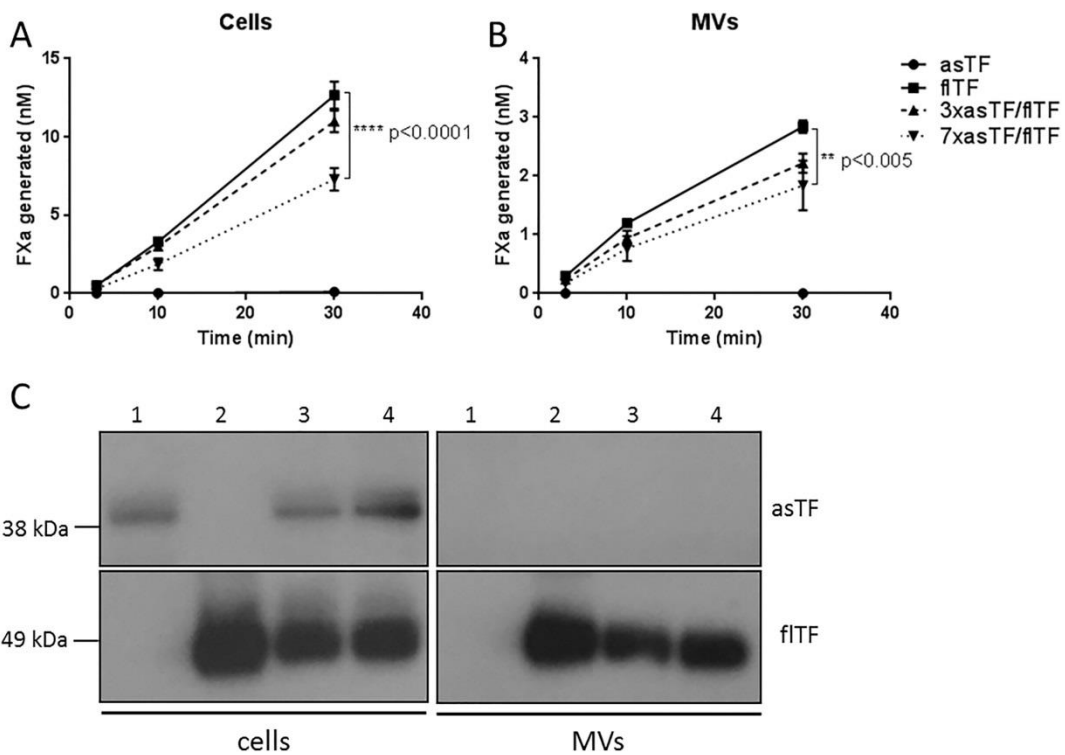
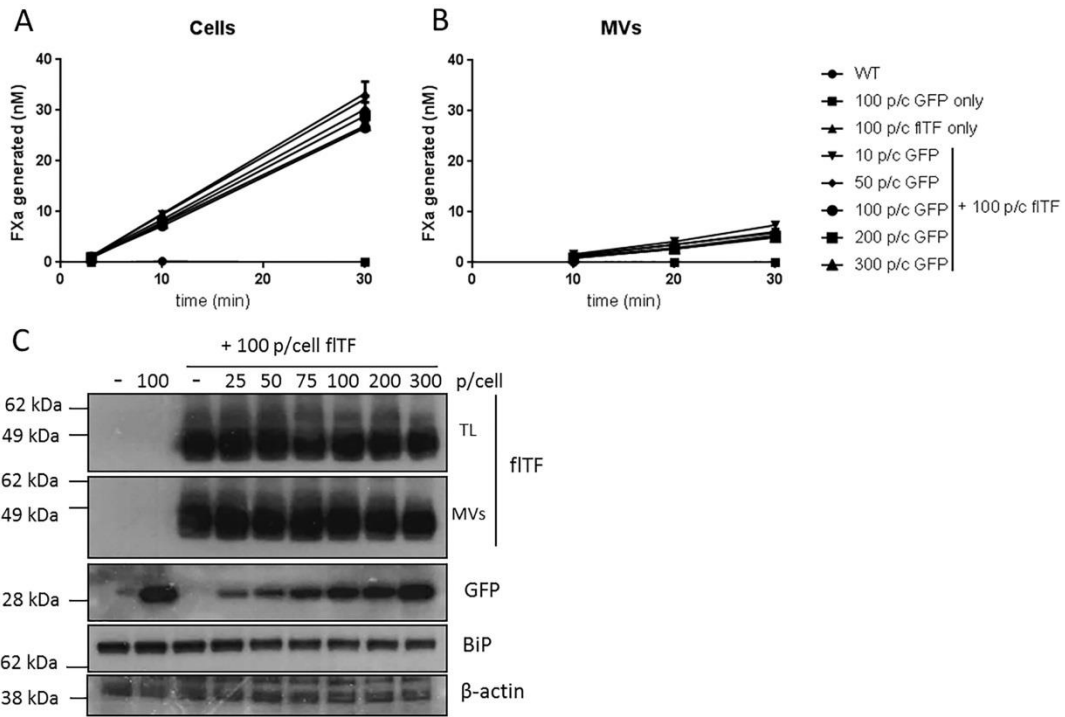


**Supplementary Fig. 1.** Confocal images of ECRF cells co-expressing asTF (green) and fITF (red). Images were captured in different z-planes.



**Supplementary Fig. 2.** Titration curve: escalating doses of asTF expressing adenovirus in ECRF cells. A) and B) Rates of FXa generation on cells and MVs in the presence of 1 nM FVIIa and 50 nM FX. asTF virus particle numbers were increased 3- or 7-fold. C) Protein levels on cells and MVs transduced with 3 × asTF (1); fITF (2); 3 × asTF with fITF (3), and 7 × asTF with fITF (4).



**Supplementary Fig. 3.** Titration curve: escalating doses of GFP expressing adenovirus in ECRF cells. A) and B) Rates of FXa generation on cells and MVs in the presence of 1 nM FVIIa and 50 nM FX. GFP virus particle numbers were increased to 300 particles per cell. C) Protein levels on cells and MVs transduced with increasing levels of GFP virus particles in the presence or absence of fITF.