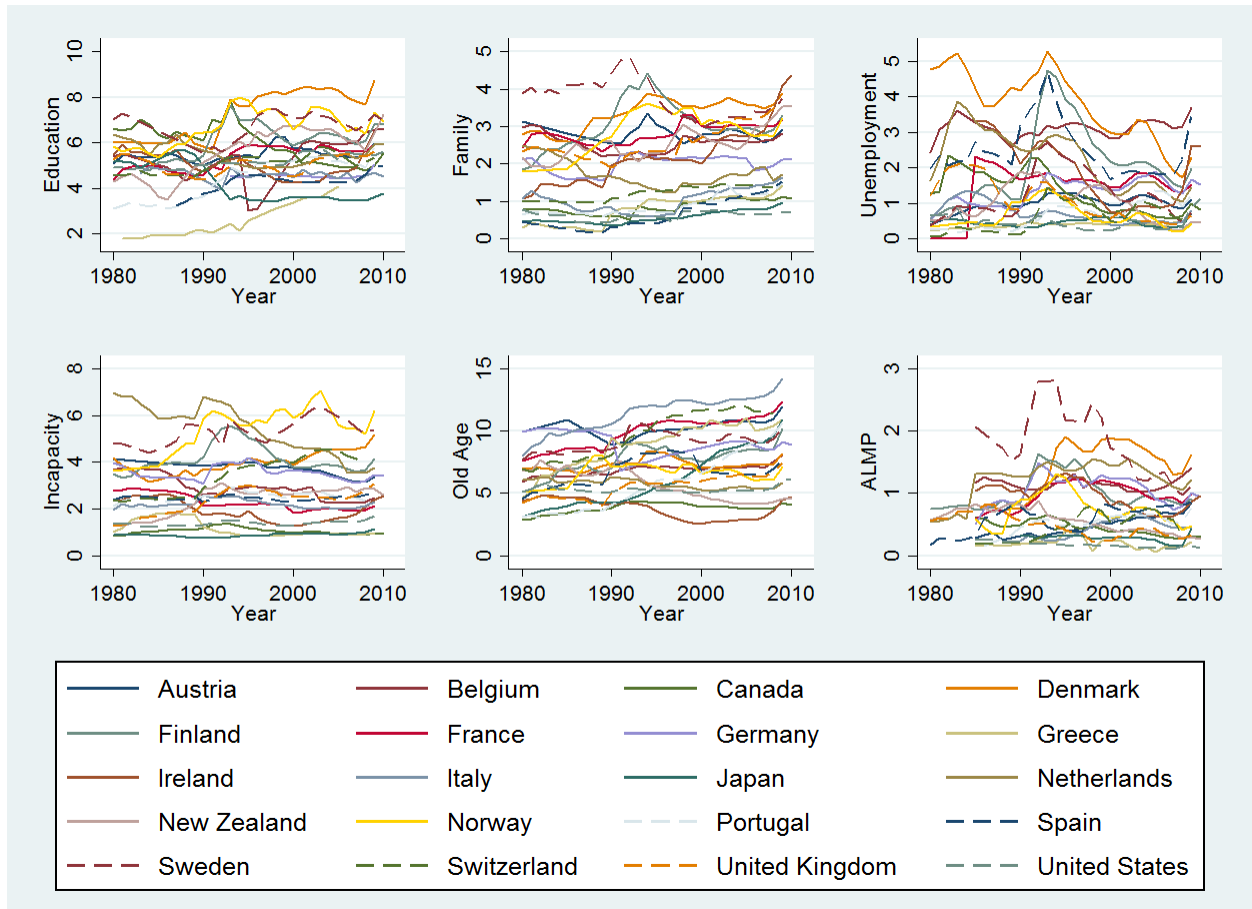


**Appendix**  
**Social Policy Expenditures and Life Expectancy in High-Income Countries**  
**Reynolds and Avendano**

**Appendix Figure 1.** Social expenditures as a percentage of GDP by country and year, OECD countries, 1980–2010.



OECD, Organisation of Economic Co-operation and Development; GDP, gross domestic product

**Appendix**  
**Social Policy Expenditures and Life Expectancy in High-Income Countries**  
**Reynolds and Avendano**

**Appendix Table 1.** Fixed Effects Models of Life Expectancy on Lagged Social Expenditures Under Different Samples, OECD Countries, 1980–2010

Variable	Excluding U.S.		Excluding Greece, Portugal, Spain		Public only		Demographic variables	
	$\beta$	95% CI	$\beta$	95% CI	$\beta$	95% CI	$\beta$	95% CI
Education	0.154	0.023, 0.285	0.160	0.037, 0.284	0.160	0.032, 0.288	0.149	0.023, 0.274
Family	-0.070	-0.333, 0.193	-0.102	-0.362, 0.158	-0.040	-0.302, -0.222	-0.105	-0.366, 0.156
Unemployment	0.063	-0.126, 0.252	-0.005	-0.223, 0.212	0.033	-0.155, -0.220	0.047	-0.136, 0.231
Incapacity	0.176	0.011, 0.342	0.158	-0.006, 0.322	0.169	-0.023, -0.360	0.144	-0.017, 0.305
Old age	-0.091	-0.210, 0.028	-0.082	-0.215, 0.051	-0.102	-0.220, -0.016	-0.094	-0.210, 0.022
ALMP	0.155	-0.165, 0.474	0.066	-0.264, 0.397	0.141	-0.177, -0.459	0.097	-0.210, 0.404
Observations	207		193		224		220	
Number of countries	19		17		20		20	

*Notes:* Estimate unit is years of life expectancy.

OECD, Organisation of Economic Co-operation and Development; ALMP, active labor market programs