

Bacterial Nanocellulose Loaded with Bromelain: Assessment of Antimicrobial, Antioxidant and Physical-Chemical Properties

Janaína Artem Ataide¹, Nathália Mendes de Carvalho², Marcia de Araujo Rebelo³, Marco Vinícius Chaud³, Denise Grotto², Marli Gerenutti², Mahendra Rai⁴, Priscila Gava Mazzola⁵, Angela Faustino Jozala²

¹Graduate Program in Medical Sciences, Faculty of Medical Sciences, State University of Campinas, Campinas, Brazil

²Department of Technology & Environmental Process, University of Sorocaba UNISO, Sorocaba, SP – Brazil

³LaBNUS – Biomaterials and Nanotechnology Laboratory, i(bs)2 – intelligent biosensing and biomolecule stabilization research group, University of Sorocaba, Sorocaba/SP, Brazil

⁴Nanobiotechnology Lab., Department of Biotechnology, SGB Amravati University, Amravati, Maharashtra, India

⁵Faculty of Pharmaceutical Sciences, State University of Campinas, Campinas, Brazil

CORRESPONDING AUTHOR:

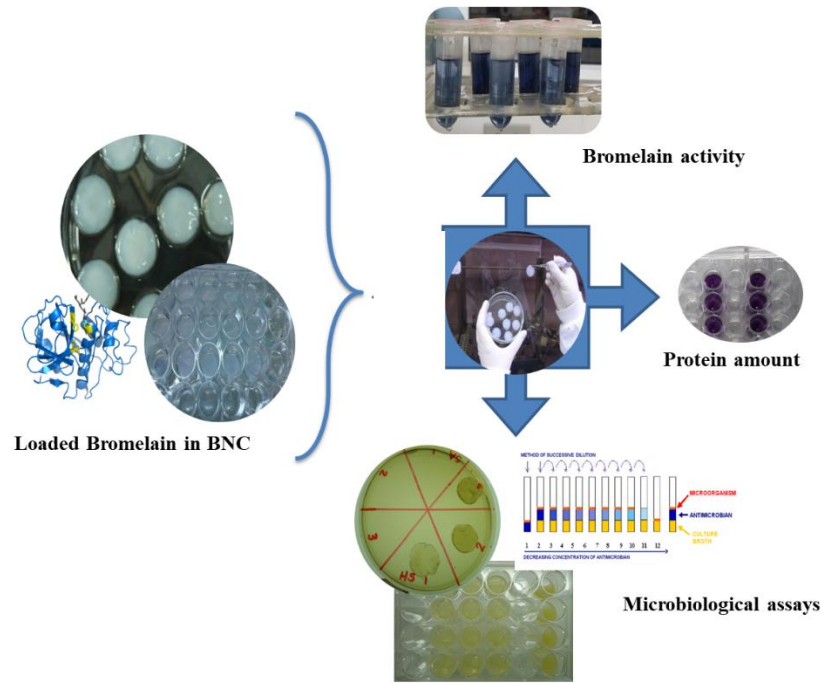
Janaína Artem Ataide – Graduate Program in Medical Sciences, Faculty of Medical Sciences, University of Campinas (Unicamp), Campinas/SP, Brazil, zip code 13083-887

Phone Numbers: +55 19 99777 2620 / +55 19 3521 8884

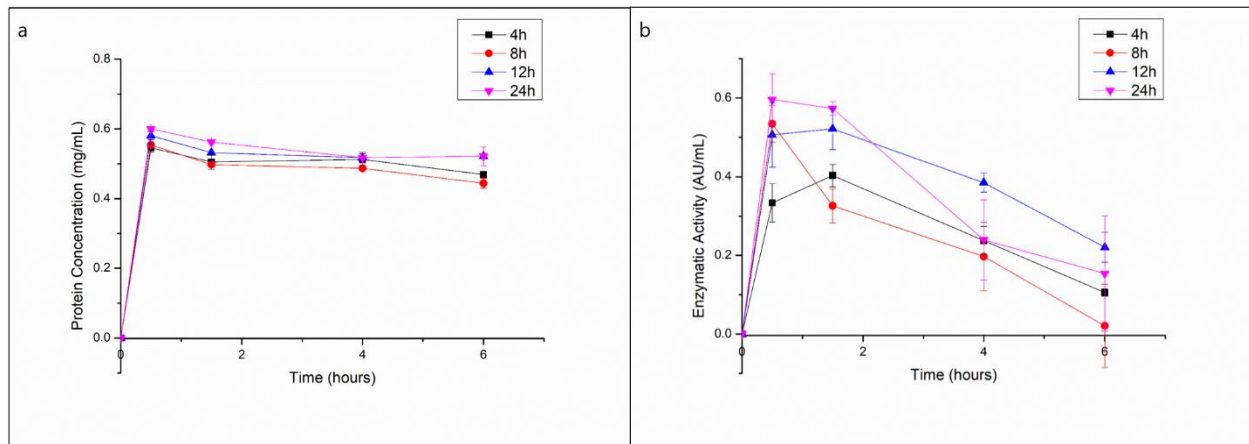
E-mail Address: janaina.a.ataide@gmail.com

Postal Address: Faculty of Medical Sciences, University of Campinas (Unicamp) - Tessália Vieira de Camargo Street, 126, Cidade Universitária "Zeferino Vaz" - Campinas - SP - Brasil – zip code: 13083-887

SUPPLEMENTARY INFORMATION



Supplementary Figure S1. Graphical scheme for general understanding of the manuscript.



Supplementary Figure S2. Protein concentration (a) and enzymatic activity (b) of first 6 hours of bromelain release from bacterial cellulose membranes after different incorporation times at 25°C, where error bars correspond to standard deviation. Figure presenting time from 0 to 6 hours, enhancing the release in this time, once it is not so clear in figure 2 of main manuscript.