

Supplementary Fig 1.

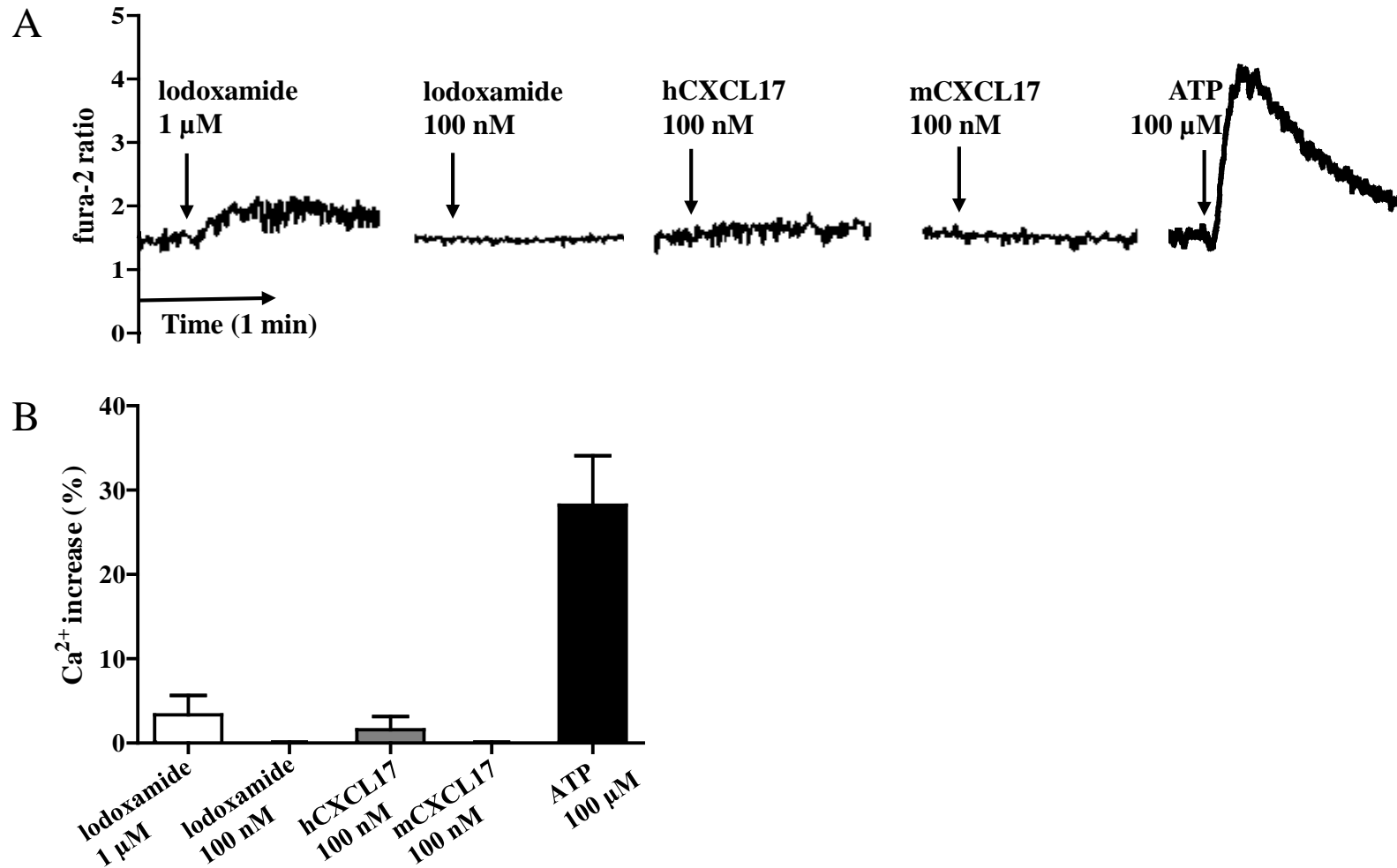


Fig 1. Effects of lodoxamide, CXCL17, and APT on intracellular Ca²⁺ concentrations in THP-1 cells. A) Representative [Ca²⁺]_i traces of THP-1 cells treated with lodoxamide (100 nM or 1 mM), hCXCL17 (100 nM), mCXCL17 (100 nM), or ATP (100 mM). Arrows indicate when compounds were added. B) Histogram of Ca²⁺ responses. Results are presented as the means \pm SEs of three independent experiments.

Supplementary Fig 2.

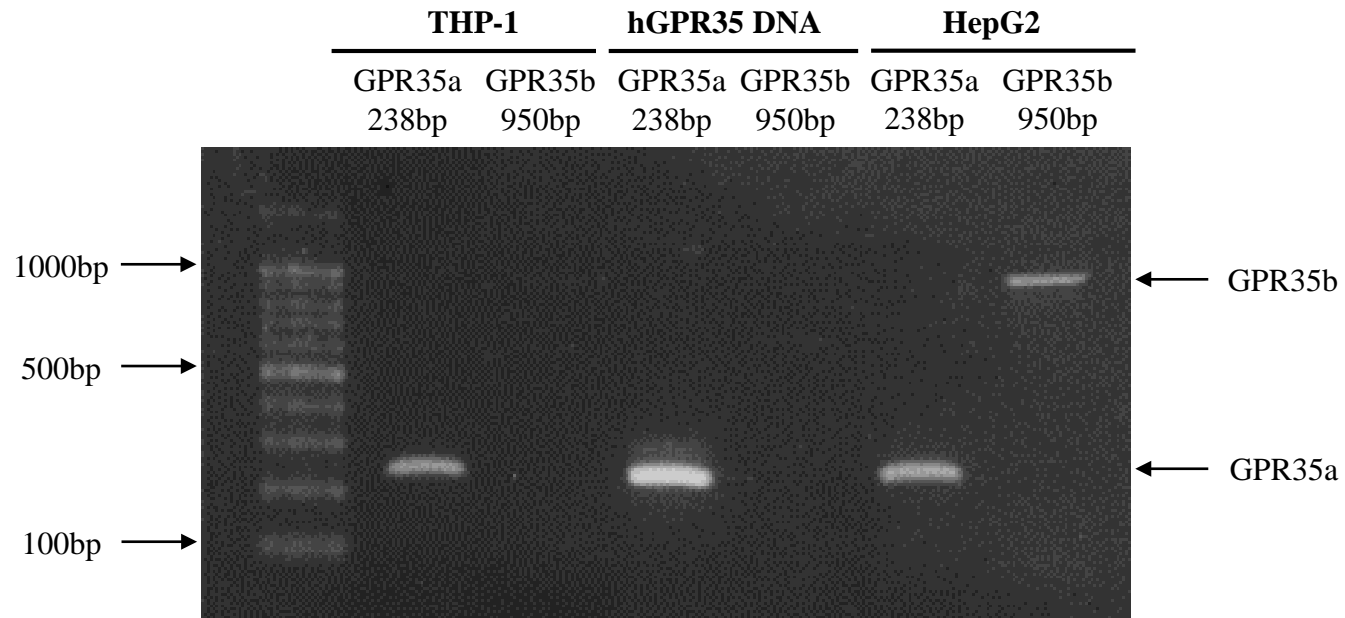


Figure 2. THP-1 cells express GPR35a

RT-PCR was conducted to detect GPR35a and GPR35b. THP-1 cells expressed mainly GPR35a and we used GPR35a. Primer sequences are followings.

hGPR35a Forward GTGTTTCGTGGTCTGCTTCCT,

hGPR35b Forward GTCCTTGCGTCTCTCTGACC,

hGPR35 Reverse GAGAGTCCTGGCTTTTGTGG

Supplementary Fig 3.

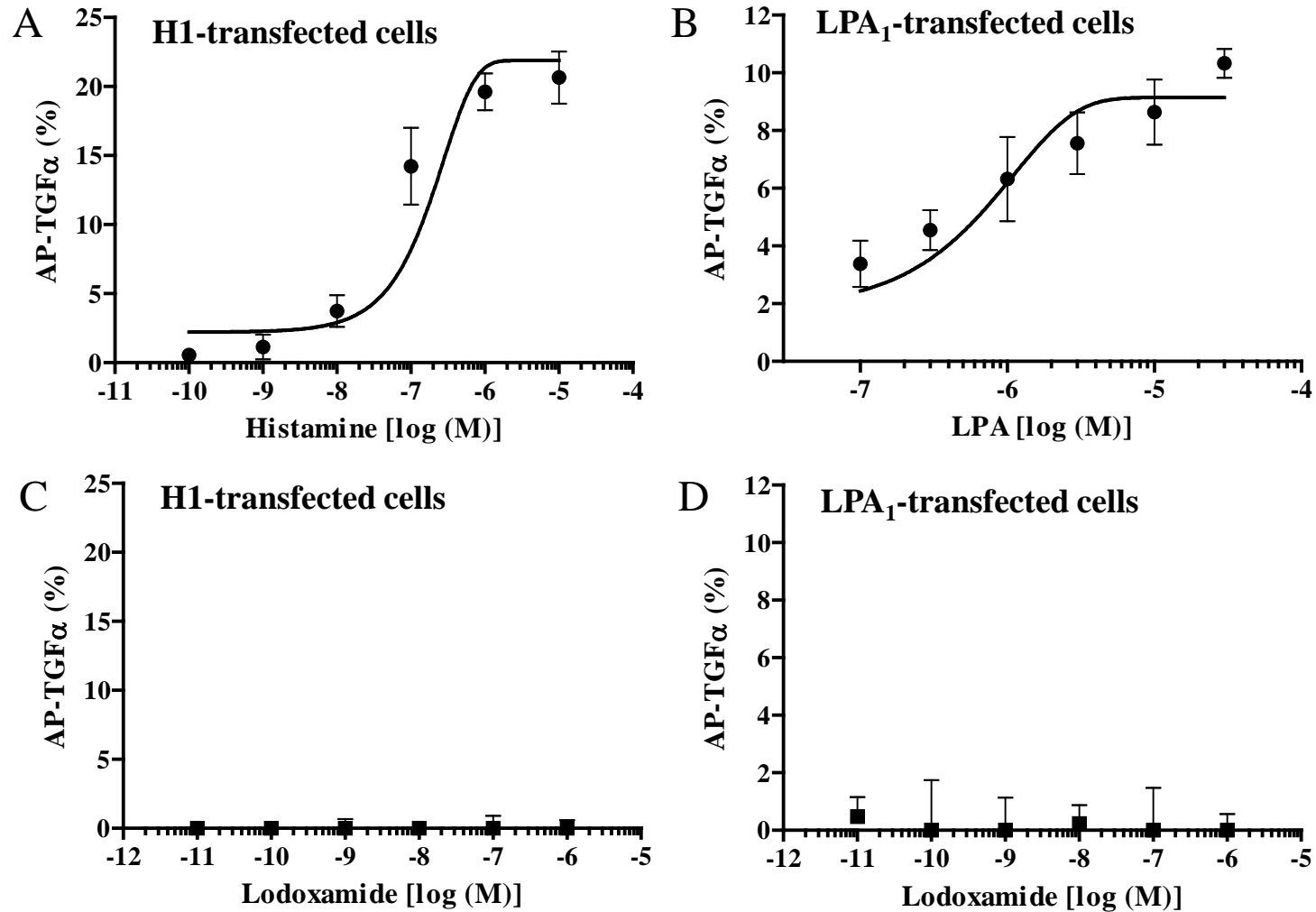


Figure 3. Lodoxamide did not induce activation of H1 histamine or LPA1 lysophosphatidic acid receptor Concentration-response curves of histamine (A), LPA (B), and lodoxamide (C and D) as determined by the AP-TGF α shedding assay in H1 or LPA1 coexpressed with a mixture of eight G α proteins in HEK-293 cells. Results are presented as the means \pm SEs of 3 individual experiments.