

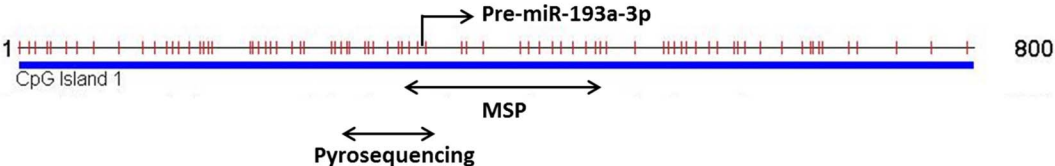
Supplementary Table S1: The list of 78 targets of miR-193a-3p commonly found by three algorithms; miRDB, miRnada and TargetScan.

Gene Symbol	miRanda-mirSVR score	TargetScan context score	miRDB target score
SLC10A6	-0.5816	-1.3	95
FLI1	-0.4927/-0.5492	-0.92	97
SLC39A5	-0.8454	-0.76	89
DCAF7	-0.4517	-0.72	99
AP2M1	-1.1939	-0.7	92
FAM84A	-0.2693	-0.7	53
FHDC1	-0.8628/-0.4939	-0.67	100
CBX7	-0.2752	-0.63	86
SLC16A6	-0.9332	-0.61	95
ERBB4	-0.0253	-0.63	90
ST6GALNAC5	-1.2195	-0.6	76
HOXD13	-1.213	-0.63	91
ZNF385B	-0.4065	-0.58	79
KRAS	-0.1648	-0.77	53
ZBTB5	-0.1481	-0.62	88
MMP19	-0.732	-0.59	72
E2F6	-0.5703	-0.56	91
CCND1	-1.1568	-0.57	51
CTDSPL2	-1.1401	-0.58	81
SON	-0.7935	-0.52	62
STMN1	-0.9663	-0.52	74
EN2	-0.493	-0.57	70
MYCN	-0.6757	-0.51	80
WDR82	-0.4731	-0.52	79
NOVA1	-0.9344	-0.5	93
CNOT6	-0.5372	-0.49	83
TCF4	-0.4005	-0.49	56
UBP1	-0.3915	-0.53	54
SOS2	-1.2414	-0.48	96
MCL1	-0.2322	-0.5	70
NSF	-0.6182	-0.54	54
GNAO1	-0.73	-0.47	71
PLAU	-1.1626	-0.44	87

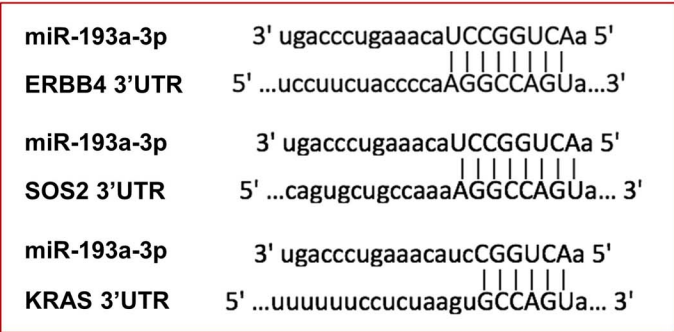
STX16	-0.7442	-0.71	92
ARHGEF12	-0.7813	-0.45	88
GRB7	-0.8188	-0.42	85
ING1	-1.0744	-0.87	51
CNBP	-0.6264	-0.41	75
RUNX1T1	-0.7889	-0.4	85
SIAH1	-1.2014	-0.4	94
ETV1	-0.2897	-0.45	81
LAMC1	-1.0379	-0.5	52
LAMC2	-0.5883	-0.39	94
ZNF248	-0.9027	-0.62	69
LAMP2	-0.6894	-0.39	86
YWHAZ	-0.4055	-0.37	77
CALB1	-0.8804	-0.37	84
KIT	-0.2177	-0.36	79
ERBB2IP	-1.0406	-0.36	80
TMEM30A	-0.4191	-0.35	89
SEPN1	-0.1612	-0.36	80
ADAMTSL3	-0.7972	-0.34	87
TGFBR3	-0.4183	-0.33	87
FAT4	-1.0034	-0.33	91
ARMC1	-0.2726	-0.32	88
GDF11	-0.3873	-0.72	60
NAV3	-0.3963	-0.31	50
ZC3H11A	-1.0175	-0.31	51
TBL1XR1	-0.2676	-0.3	95
TNFRSF21	-0.4415	-0.3	54
NT5E	-1.181	-0.67	90
CAPRIN1	-0.5452	-0.67	87
SCYL3	-0.3719	-0.28	76
NRIP1	-0.3921	-0.26	86
ABI2	-0.4639	-1.31	90
LRP4	-0.4991	-0.24	93
RSF1	-0.6646	-0.24	86
TGFB2	-0.3377	-0.24	84
DNAJC13	-0.4939	-0.23	72
DAAM2	-0.1716	-0.21	63

RNF222	-0.1655	-0.2	55
DUSP7	-0.5282	-0.31	70
BRPF1	-0.1217	-0.16	56
TP53INP1	-0.1335	-0.35	63
FLRT3	-0.865	-0.35	89
DYRK2	-0.6342	-0.35	60
ETV6	-0.1558	-0.31	54
CADM1	-0.8638	-0.34	83

Supplementary Figure S1



Supplementary Figure S2



Supplementary Figure S3

