

FigureS1.

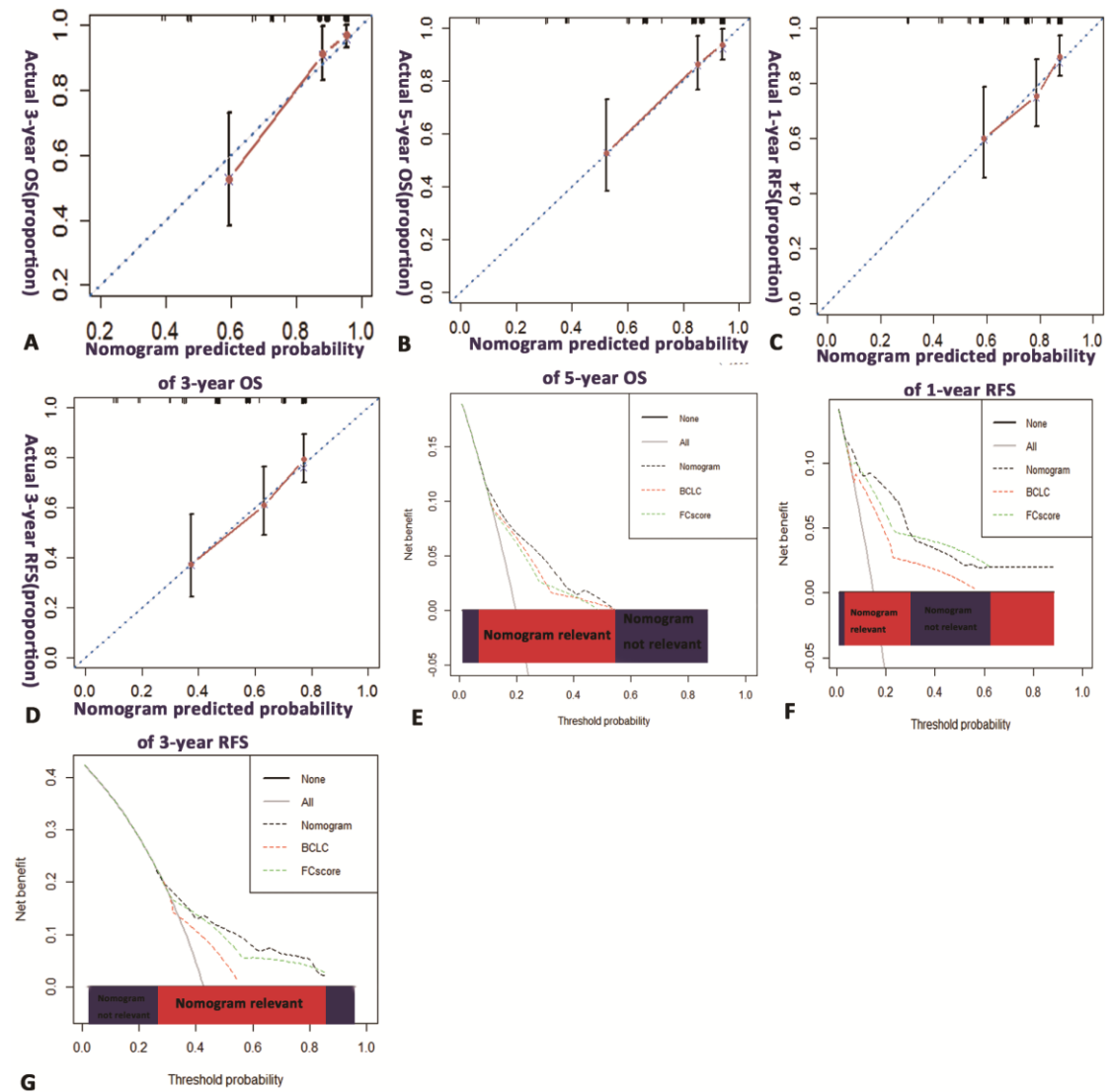


Figure. S1 Calibration curve and decision curve analysis for HCC in the validation curve. Calibration curve for predicting OS at 3-year(A),5-year(B), and for (C)RFS at 1 year, (D)3-year. On the decision curve analysis, nomogram show superior net benefit at 2-year (E),3-year (F) OS and 2-year RFS in the validation cohort.

Table S1. Univariate analyses for OS and RFS in patients with HCC

characters	training cohort			validation cohort		
		OS	RFS		OS	RFS
	patients n=616	univariate P-value	univariate P-value	patients n=152	univariate P-value	univariate P-value
Gender, male/female	514/102	0.966	0.19	131/21	0.025	0.002
Age, <60/≥60	343/273	0.998	0.27	80/72	0.689	0.956
HBsAg, negative/positive	100/516	0.599	0.15	27/125	0.54	0.12
AFP, <400/≥400 ng/mL	435/181	<0.001	<0.001	113/39	0.561	0.929
TBIL, <20/≥20 μmol/L	558/58	0.678	0.943	136/16	0.832	0.666
GGT, <45/≥45 U/L	248/368	0.005	0.003	63/89	0.016	<0.001
ALT, <50/≥50 U/L	495/121	0.469	0.115	119/33	0.127	0.048
ALB, <35/≥35g/L	22/594	0.012	0.091	45/107	0.408	0.007
FIB, <266/≥266mg/dL	399/217	<0.001	<0.001	102/50	<0.001	<0.001
CRP, <10/≥10mg/L	549/67	<0.001	<0.001	136/16	<0.001	<0.001
PLT, <200/≥200 10 ⁹ /L	509/107	0.313	0.691	124/28	0.999	0.136
N, <6.3/≥6.3 10 ⁹ /L	552/64	0.662	0.624	140/12	0.829	0.26
L, <3.2/≥3.2 10 ⁹ /L	580/36	0.797	0.611	145/7	0.398	0.608
M, <0.6/≥0.6 10 ⁹ /L	439/177	<0.001	0.004	121/31	0.527	0.548
cirrhosis, no/yes	156/460	0.83	0.057	37/115	0.191	0.184
tumor number, single/multiple	533/83	<0.001	0.002	127/25	0.032	0.003
tumor throbos, no/yes	577/39	<0.001	<0.001	143/9	<0.001	<0.001
tumor capsule, no/yes	394/222	0.002	0.088	103/49	0.081	
tumor size, <5/≥5cm	360/256	<0.001	<0.001	78/74	0.002	0.005
Lymph node metastasis, no/yes	612/4	0.058	0.904	150/2	<0.001	0.012
MVI, no/yes	450/166	<0.001	<0.001	102/50	0.01	<0.001
differentiation, I-II/III-IV	421/195	0.002	0.002	104/48	0.03	0.107
IBS, 0/1	322/294	<0.001	<0.001	82/70	<0.001	0.001
GPS, 0/1/2	535/73/8	<0.001	<0.001	132/20/0	0.002	
IBI, 0/1/2	13/551/52	<0.001	<0.001	39/103/10	0.003	<0.001
FC-score, 0/1/2	386/176/54	<0.001	<0.001	97/44/11	<0.001	<0.001
BCLC, A/B/C	401/186/29	<0.001	<0.001	91/52/9	<0.001	<0.001
CLIP, 0/1-3/4-6	337/272/7	<0.001	<0.001	87/61/4	<0.001	<0.001

APF , alpha fetal protein ; FIB , fibrinogen ; PLT , platelet ; LNM , lymph node metastasis ;
MVI , microvascular invasion ; IBS , Inflammation based score ; GPS , Glasgow Prognostic
Score ; IBI , inflammation based index ; FC-score , fibrinogen and C-reactive protein score ;
BCLC , Barcelona Clinic Liver Cancer staging system ; CLIP , Cancer Liver Italian Program.