

**Supplemental Table S1:** DNA primers used in this study.

*erfK* insertion (PCR template = pKD4)

agcctgtcacaatgccgtaccgagaacaatactcagccctactgggctatctggacaagg

aggccaggcctgcccgcgctaattgtgaccggcattccggcatatgaatatcctccttagttcc

*yeeA* insertion (PCR template = pKD3)

ccgataagtcatagccctttgaaatacgggtgtaccgattaaatggcgcgccttacgcc

tgctgctcgttcattagctgccgcaactcggcagcaatatcatatgaatatcctccttagttcc

*pduW*

tatggcagatgcgcaggtgacaattaagac

tgacaacaaatcacccgtaatgcgctgagt

*cobU*

acctcatccgccgctgccgccagtcggttg

cttaattggcgatgcgccgaggtactgta

*traC*

tcgtggccgatgccagctcgtcggccagg

ccgcgctggatgacctacaagcaggccgc

*korB*

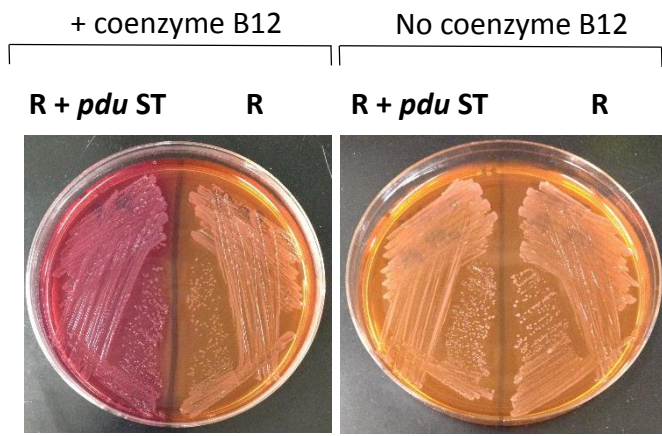
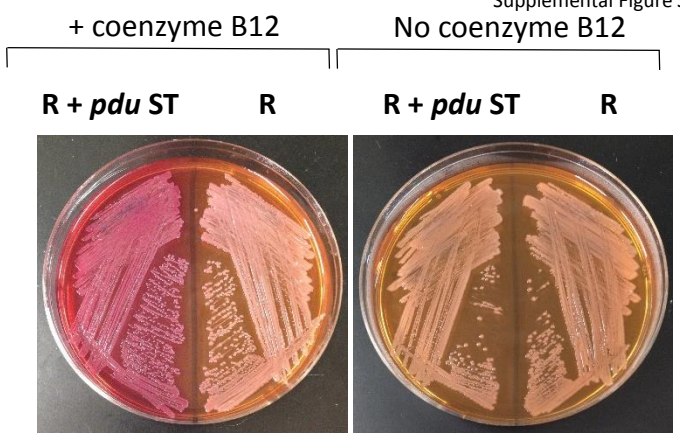
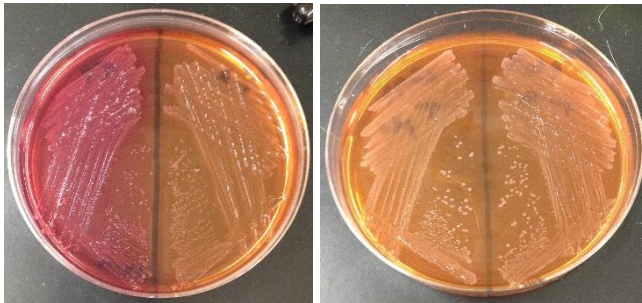
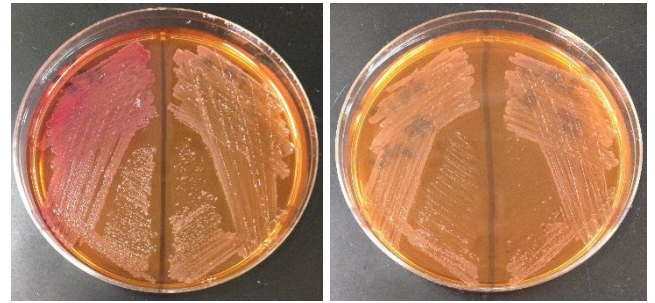
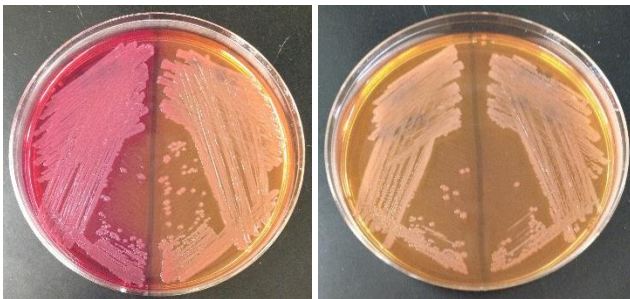
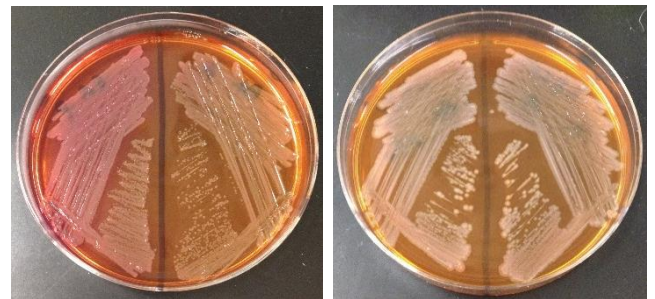
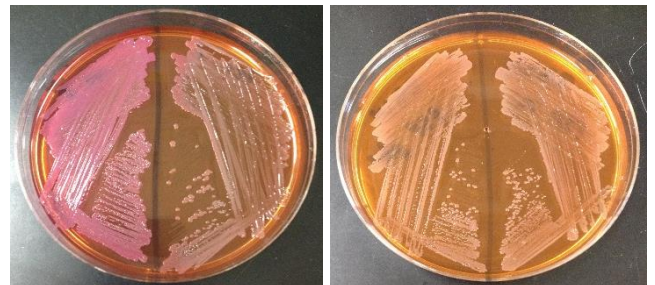
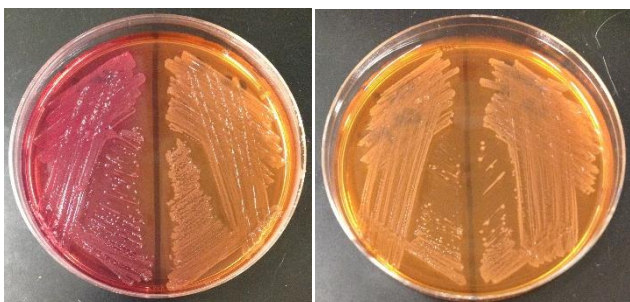
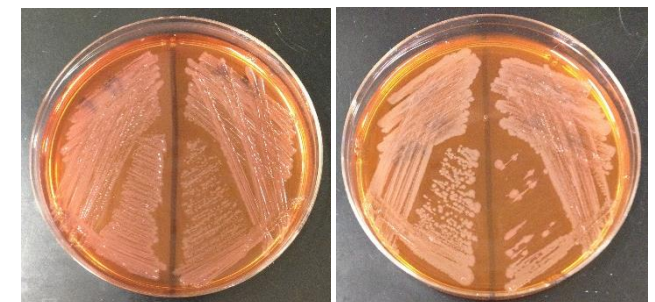
gacctggacctgatcgaagaatccgc

tgattcctgggtgtcgtcgtcaagccac

**Supplemental Table S2:** MCP yields from R995 + *pdu* ST-containing bacteria

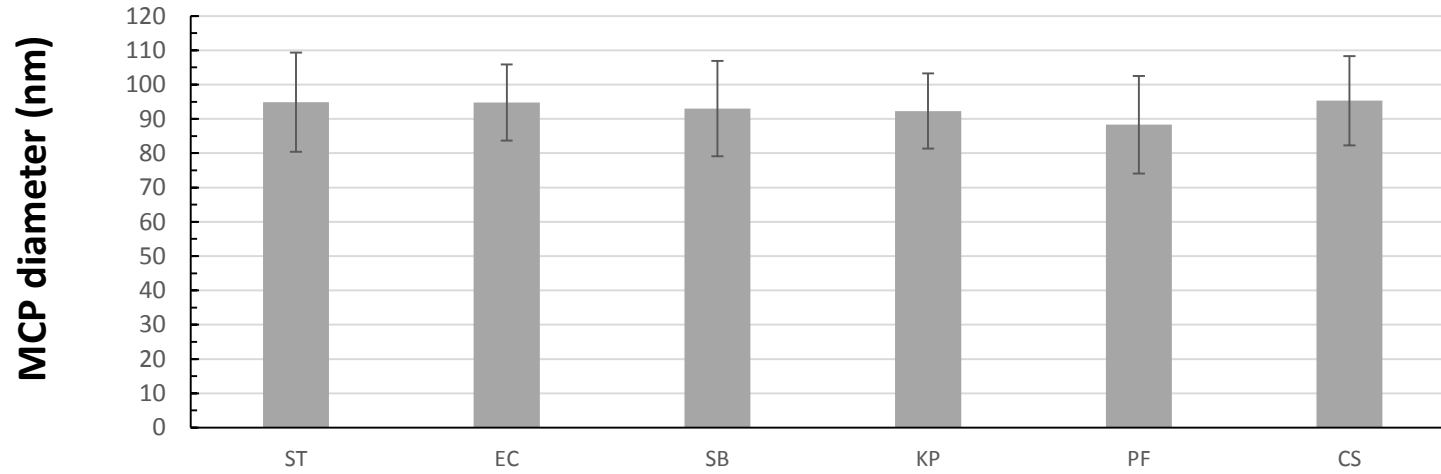
<u>Background strain (containing R995 + <i>pdu</i> ST)</u>	<u>Total MCP yield (micrograms)*</u>
<i>S. Typhimurium</i> $\Delta pdu$	1521.86
<i>S. bongori</i>	1517.89
<i>E. coli</i>	1470.17
<i>C. sakazakii</i>	1489.06
<i>K. pneumoniae</i>	1533.79
<i>P. fluorescens</i>	1463.22

\*representative data from preps obtained from 70 ml of LB cultures supplemented with 1,2 PD as described in Materials and Methods

*Salmonella Typhimurium Δpdu**Serratia marcescens**Escherichia coli**Pseudomonas fluorescens**Salmonella bongori**Pseudomonas aeruginosa**Klebsiella pneumoniae**Pseudomonas sp. 51821**Cronobacter sakazakii**Pseudomonas putida*

**Supplemental Figure S1. The utilization of 1,2 PD directed by R995 + *pdu* ST depends on coenzyme B12.** The indicated bacterial species containing either R995 + *pdu* ST or the R995 vector control were streaked onto MacConkey medium supplemented with 1,2 PD and coenzyme B12 or with 1,2 PD in the absence of coenzyme B12. Utilization of 1,2 PD will result in a pink/red colony color on this medium.

## Supplemental Figure S2



**Supplemental Figure S2: Diameters of MCPs isolated from different bacterial species containing R995 + pdu ST.** The diameters of at least 50 individual MCPs from the indicated bacteria containing R995 + pdu ST were measured in random fields of view in TEM images. The widest aspect of a given MCP diameter was measured for this analysis. The average and standard deviation for each sample is graphed. Abbreviations: ST = *S. Typhimurium*  $\Delta pdu$ ; EC = *E. coli*; SB = *S. bongori*; KP = *K. pneumoniae*; PF = *P. fluorescens*; CS = *C. sakazakii*.