

**Note to readers with disabilities:** *EHP* strives to ensure that all journal content is accessible to all readers. However, some figures and Supplemental Material published in *EHP* articles may not conform to [508 standards](#) due to the complexity of the information being presented. If you need assistance accessing journal content, please contact [ehponline@niehs.nih.gov](mailto:ehponline@niehs.nih.gov). Our staff will work with you to assess and meet your accessibility needs within 3 working days.

## **Supplemental Material**

# **First Trimester Urinary Bisphenol A Concentration in Relation to Anogenital Distance, an Androgen-Sensitive Measure of Reproductive Development, in Infant Girls**

Emily S. Barrett, Sheela Sathyanarayana, Omar Mbowe, Sally W. Thurston, J. Bruce Redmon, Ruby H.N. Nguyen, and Shanna H. Swan

### **Table of Contents**

**Table S1.** TIDES participant demographics by study center.

**Table S2.** Linear regression models examining the relationship between log(SpG adj. (BPA)) and covariates and log-transformed anogenital distance measures in newborn daughters (n=381).

**Figure S1.** Scatterplots examining the relationship between AGD-AC and continuous covariates.

**Figure S2.** Scatterplots examining the relationship between AGD-AF and continuous covariates.

**Figure S3.** Adjusted generalized additive model plots with the response variable AGD-AC

**Figure S4.** Adjusted generalized additive model plots with the response variable AGD-AF

**Table S1. TIDES participant demographics by study center.**

<b>Continuous variables (Mean ± SD)</b>	<b>Overall (n=381)</b>	<b>UMN (n=94)</b>	<b>UCSF (n=98)</b>	<b>URMC (n=109)</b>	<b>UW (n=80)</b>
Maternal age (years)	31.1 ± 5.6	30.8 ± 4.5	34.7 ± 4.1	27.0 ± 5.7	32.7 ± 4.6
Gestational age at birth (weeks)	39.4 ± 1.6	39.5 ± 1.6	39.7 ± 1.6	39.0 ± 1.7	39.6 ± 1.5
Age at exam (days)	4.4 ± 10.4	4.1 ± 10.8	4.9 ± 10.8	4.5 ± 9.0	4.2 ± 11.4
Z-score weight-for-age	-0.4 ± 1.3	-0.4 ± 1.1	-0.6 ± 1.3	-0.3 ± 1.5	-0.17 ± 1.2
Post-conception age at exam (weeks)	40.1 ± 2.0	40.0 ± 2.1	40.4 ± 2.0	39.7 ± 1.7	40.2 ± 2.3
AGD-AC (mm)	36.6 ± 3.8	36.7 ± 3.9	37.1 ± 4.3	36.1 ± 3.6	36.7 ± 3.4
AGD-AF (mm)	16.0 ± 3.2	16.3 ± 2.7	14.4 ± 3.2	15.5 ± 2.6	18.3 ± 3.2
Time of urine collection (hours after midnight)	12.6 ± 2.5	12.8 ± 2.6	12.2 ± 2.6	12.4 ± 2.4	13.2 ± 2.3
SpG-adjusted BPA (µg/L)	1.8 ± 2.5	2.0 ± 3.6	1.4 ± 1.7	2.1 ± 2.7	1.6 ± 1.7
Gestational age at urine collection (weeks)	10.8 ± 2.0	10.2 ± 2.0	12.1 ± 1.4	10.4 ± 1.9	10.5 ± 1.8
<b>Categorical variables N(%)<sup>a</sup></b>					
Race/ethnicity					
White/non-Hispanic	225 (60.7)	75 (81.9)	54 (56.3)	41 (38.7)	55 (70.5)
Other	147 (39.3)	17 (18.1)	42 (43.8)	65 (62.3)	23 (29.5)
Education					
High school or less	55 (14.7)	2 (2.2)	2 (2.0)	50 (45.9)	1 (1.3)
Some college or more	320 (85.3)	89 (97.8)	96 (98.0)	59 (54.1)	76 (98.7)

<sup>a</sup> Percentages may not add up to 100% due to rounding.

**Table S2. Linear regression models examining the relationship between log(SpG adj. (BPA)) and covariates<sup>a</sup> and log-transformed anogenital distance measures in newborn daughters (n=381).**

variables	Log(AGD-AC)		Log(AGD-AF)	
	Unadjusted	Adjusted	Unadjusted	Adjusted
	Estimate (95% CI)	Estimate (95% CI)	Estimate (95% CI)	Estimate (95% CI)
Log(SpG adj (BPA))	-0.01 (-0.02, 0.001)	-0.02(-0.03, -0.005)	0.01(-0.01, 0.03)	0.003(-0.02, 0.02)
Maternal age		-0.001(-0.003, 0.001)		-0.004(-0.01, 0.000)
Infant's post-conception age		0.01(0.01, 0.02 )		0.01(0.001, 0.02)
Weight-for-length z-score		0.02(0.01, 0.03)		0.01(-0.002, 0.03)
Race		0.01(-0.01, 0.03)		-0.001(-0.04, 0.04)
Urine collection time		0.001(-0.003, 0.01)		0.002(-0.01, 0.01)
UCSF center		0.01(-0.02, 0.05)		-0.114(-0.174, -0.05)
URMC center		-0.01(-0.05, 0.02)		-0.07(-0.128, -0.007)
UW center		0.003(-0.03, 0.04)		0.113(0.05, 0.173)

<sup>a</sup> For race, the referent is non-Hispanic, white. For center, the referent is UMN. All other variables are continuous.

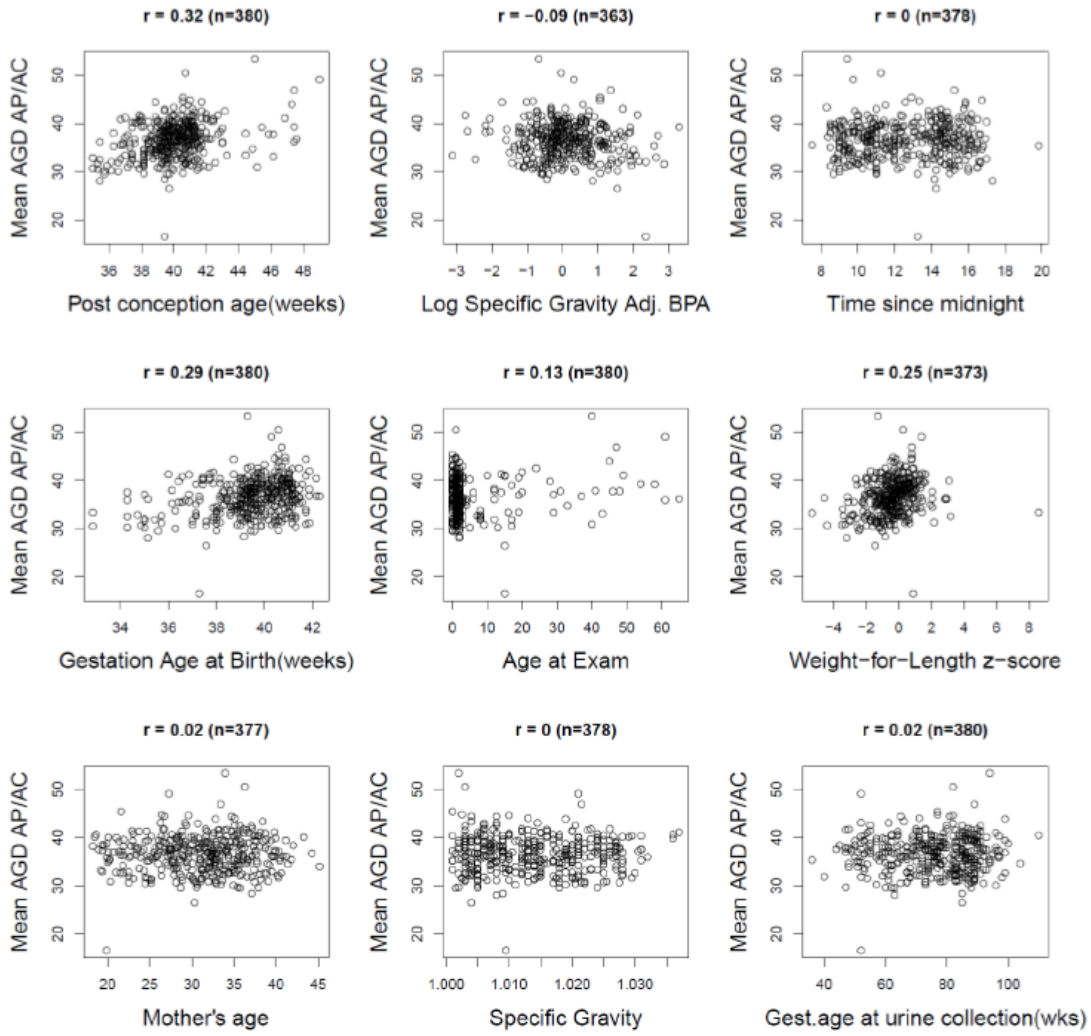


Figure S1. Scatterplots examining the relationship between AGD-AC and continuous covariates.

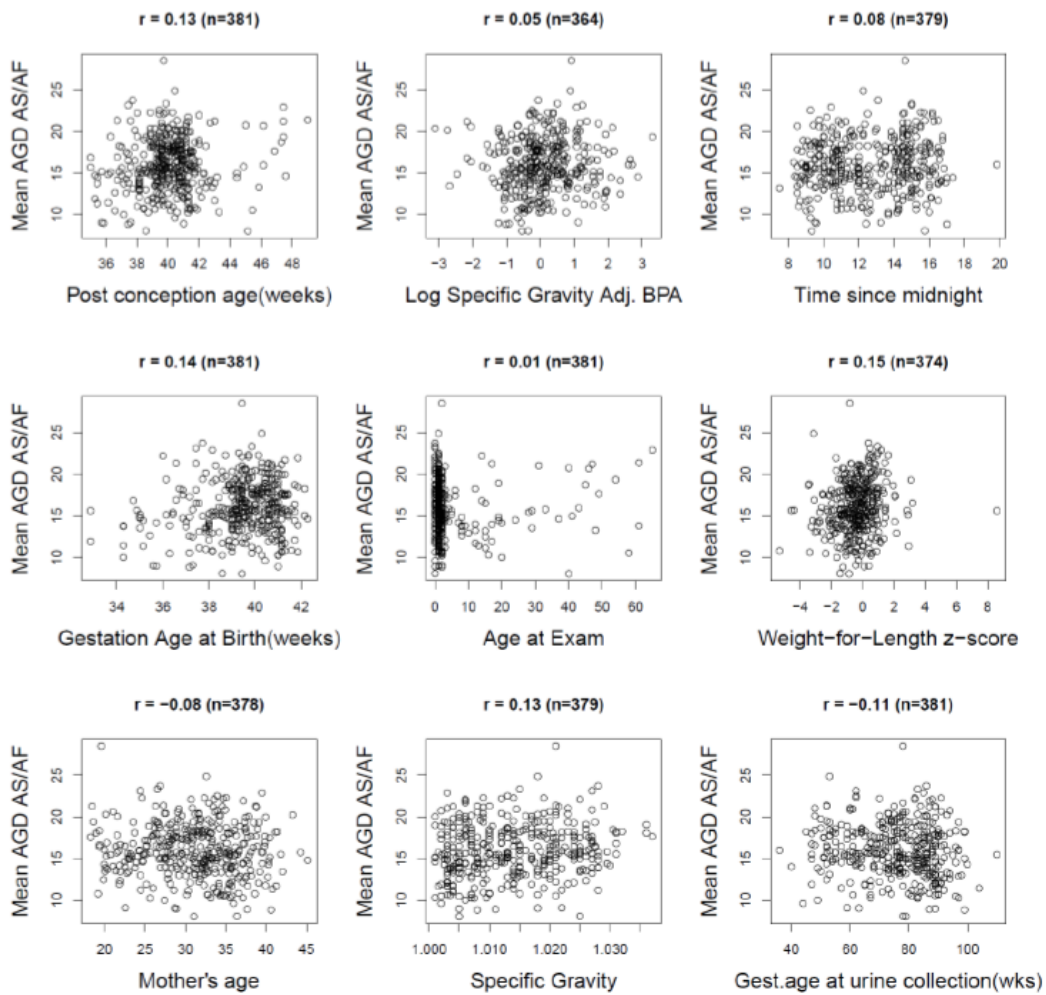
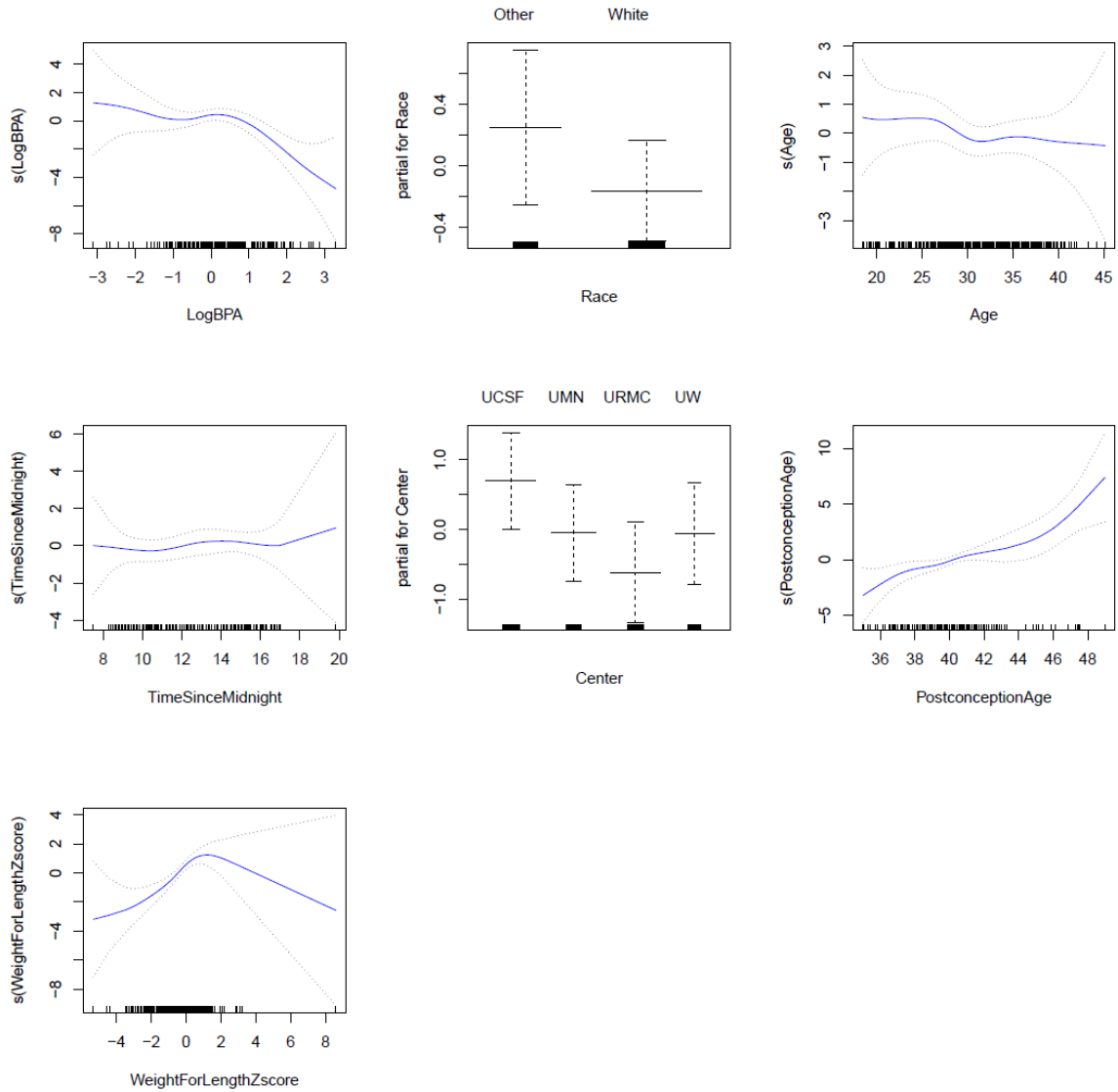


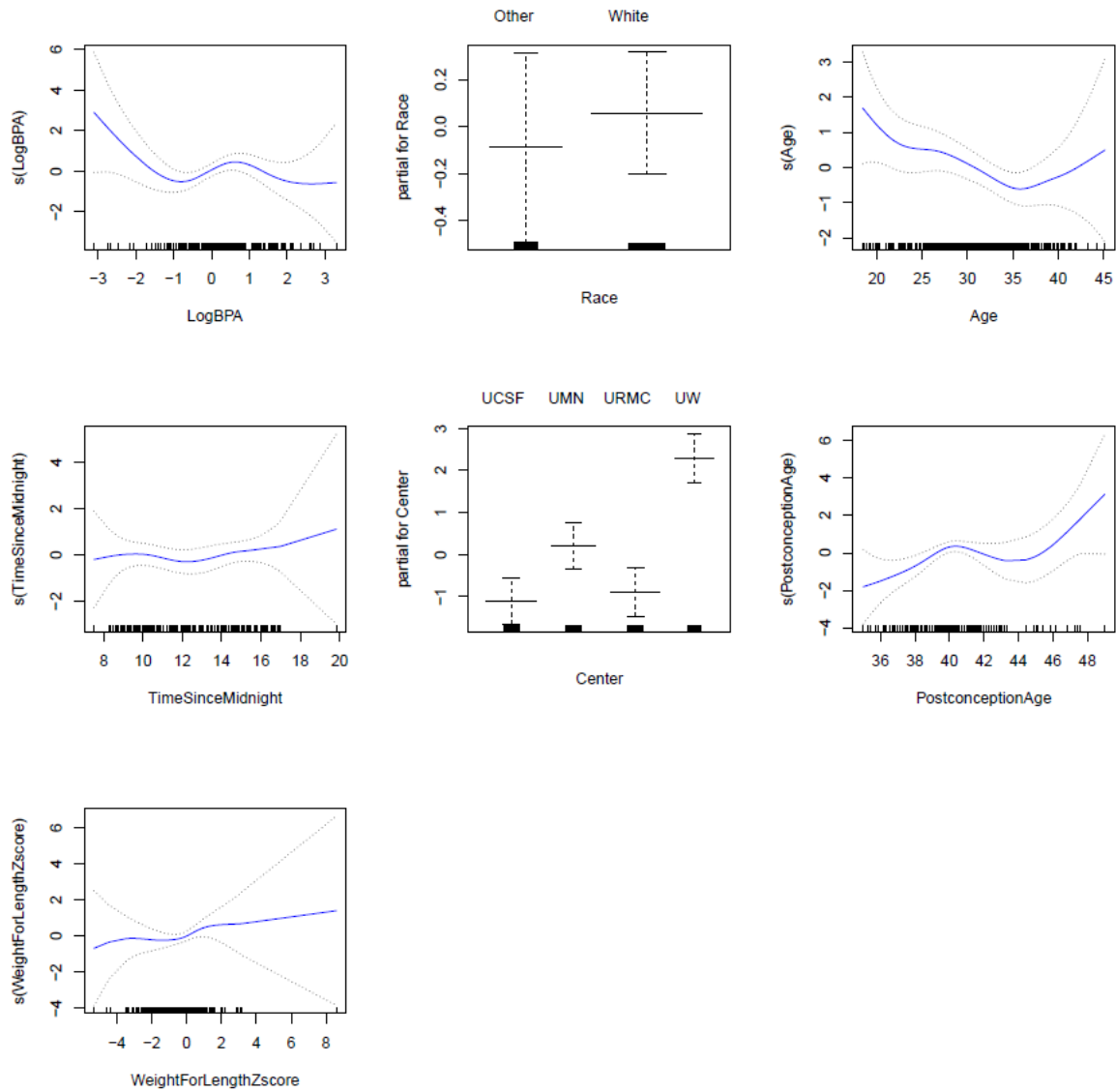
Figure S2. Scatterplots examining the relationship between AGD-AF and continuous covariates.



**Figure S3: Adjusted generalized additive model plots with the response variable AGD-AC**

Abbreviations: LogBPA: Log-transformed specific gravity-adjusted BPA; Race: Child's race; Age: Mother's age in years; TimeSinceMidnight: Time, since midnight, of urine collection; Center: Study Site; PostconceptionAge: Child's Post conception age; WeightForLengthZscore: Weight-for-Length Z-Score

The middle line in each panel shows the estimated effect of the covariate on the outcome (y-axis) plotted against the raw value of the covariate (x-axis), after adjusting for all other model covariates. Upper and lower lines (continuous variables) or bars (categorical variables) show +/- the pointwise standard error.



**Figure S4: Adjusted generalized additive model plots with the response variable AGD-AF**

Abbreviations: LogBPA: Log-transformed specific gravity-adjusted BPA; Race: Child's race; Age: Mother's age in years; TimeSinceMidnight: Time, since midnight, of urine collection; Center: Study Site; PostconceptionAge: Child's Post conception age; WeightForLengthZscore: Weight-for-Length Z-Score

The middle line in each panel shows the estimated effect of the covariate on the outcome (y-axis) plotted against the raw value of the covariate (x-axis), after adjusting for all other model covariates. Upper and lower lines (continuous variables) or bars (categorical variables) show +/- the pointwise standard error.