

Table 1S. Baseline Demographic and Clinical Characteristics of Mexican-American Patients with Major Depression Who Received Desipramine or Fluoxetine

Characteristics ^a	Group			
	Desipramine (N=112)		Fluoxetine (N=120)	
	N	%	N	%
Gender				
Female	69	61.6	84	70.0
Male	43	38.4	36	30.0
Education (years)				
Unknown	5	4.5	7	5.8
≤5	19	17.0	21	17.5
6-8	31	27.7	41	34.2
9-12	30	26.8	24	20.0
1-2 college	12	10.7	15	12.5
>2 college	15	13.4	12	10.0
Generation				
Unknown	6	5.4	5	4.2
1st generation	100	89.3	108	90.0
2nd generation	5	4.5	7	5.8
4th generation	1	0.9	0	0.0
Language preference				
Unknown	2	1.8	2	1.7
Spanish only	73	65.2	79	65.8
Spanish better than English	29	25.9	20	16.7
Spanish and English equally well	4	3.6	12	10.0
English better than Spanish	4	3.6	7	5.8
	Mean	SD	Mean	SD
Acculturation score	30.9	9.4	32.5	11.2
Age (years)	38.5	9.2	37.2	11.1
HAM-D Score	22.1	3.8	22.3	3.6
HAM-A Score	18.0	7.4	18.3	7.1
BDI Score	23.9	10.3	24.8	9.6
CESD Score	28.6	9.7	30.1	8.4
GAS Score	56.1	5.7	55.9	5.7

^a No significant difference was found between treatment groups with all $P \geq 0.156$.

Table 2S. Adverse Drug Reactions in Mexican-American Patients with Major Depression Who Received Desipramine or Fluoxetine

Adverse Drug Reactions	Desipramine (N=112)		Fluoxetine (N=120)		Side Effects	Desipramine (N=112)		Fluoxetine (N=120)	
	N	%	N	%		N	%	N	%
General	65	58.0	60	50.0	Cardiovascular ^a	32	28.6	17	14.2
Chills	6	5.4	4	3.3	Hypotension	4	3.6	1	0.8
Weight Gain	4	3.6	8	6.7	Hypertension	6	5.4	4	3.3
Weight Loss	6	5.4	7	5.8	Palpitations ^a	25	22.3	13	10.8
Perspiration ^a	24	21.4	14	11.7	Heart Block	1	0.9	0	0.0
Flushing	8	7.1	5	4.2	Anticholinergic ^b	74	66.1	62	51.7
Nocturia	2	1.8	5	4.2	Dry Mouth	46	41.1	35	29.2
Drowsiness	20	17.9	25	20.8	Blurred Vision ^a	19	17.0	9	7.5
Dizziness	41	36.6	32	26.7	Disturbance of Accommodation	1	0.9	1	0.8
Chest Pain	13	11.6	8	6.7	Mydriasis	0	0.0	1	0.8
Psychiatric	32	28.6	35	29.2	Pressure like Sensation in Eyes	3	2.7	2	1.7
Disorientation	2	1.8	4	3.3	Constipation	30	26.8	20	16.7
Delusions	3	2.7	0	0.0	Paralytic Ileus	0	0.0	2	1.7
Anxiety/ Irritability	15	13.4	21	17.5	Urinary Retention	1	0.9	1	0.8
Restlessness	10	8.9	9	7.5	Delayed Micturation	1	0.9	1	0.8
Agitations	8	7.1	11	9.2	Urinary Frequency	9	8.0	7	5.8
Sleep Alterations	14	12.5	20	16.7	Knot Sensation in throat	9	8.0	6	5.0
Bruxism	0	0.0	4	3.3	Orthostatic by pulse ^a	21	18.8	11	9.2
Neurologic	45	40.2	43	35.8	Arrhythmias/ Bradycardia/Tachycardia	9	8.0	6	5.0
Numbness	5	4.5	2	1.7	Gastrointestinal	45	40.2	50	41.7
Tingling/ Parasthesias ^a	15	13.4	6	5.0	Change in Appetite	15	13.4	18	15.0
Incoordination	1	0.9	2	1.7	Nausea	24	21.4	25	20.8
Tremors	8	7.1	3	2.5	Vomiting	6	5.4	2	1.7
Seizures	1	0.9	0	0.0	Epigastric Distress/ Dyspepsia	19	17.0	16	13.3
Tinnitus	4	3.6	6	5.0	Abdominal Cramps/ Bloating	9	8.0	13	10.8
Headaches	28	25.0	35	29.2	Diarrhea	3	2.7	5	4.2
Myalgia	10	8.9	9	7.5	Metallic Taste in Mouth	5	4.5	4	3.3
Allergic	27	24.1	23	19.2	Sexual (79 Males)	8	7.1	12	10.0
Skin Rash	4	3.6	6	5.0	Lack of Interest in Sex	3	2.7	5	4.2
Urticaria	7	6.3	8	6.7	Impotence	5	4.5	7	5.8
Itching (Skin or Eyes)	19	17.0	17	14.2	Premature Ejaculation	3	2.7	6	5.0
Photosensitization	1	0.9	2	1.7	Difficulty Achieving Orgasm	0	0.0	5	4.2
Edema	1	0.9	0	0.0	Sexual (153 Females)	5	4.5	9	7.5
Endocrine	8	7.1	8	6.7	Lack of Interest in Sex	4	3.6	6	5.0
Change in Libido	5	4.5	6	5.0	Inability to Achieve Orgasm	0	0.0	4	3.3
Impotence	0	0.0	4	3.3	Difficulty Achieving Orgasm	1	0.9	5	4.2
Change in Sexual Function	3	2.7	5	4.2	Any Side Effects	90	80.4	92	76.7

^a Significant difference between treatment groups ($P < 0.05$). ^b Significant difference between treatment groups ($P = 0.007$).

Table 3S. Differences Between Completers Who Were Genotyped and Who Were Not Genotyped.

Variable	Completer w/genotype (n=65)	Completer w/o genotype (n=101)	P
Gender (%)			
Male/Female	31/69	36/64	0.5168
Medication (%)			
Fluoxetine/Desipramine	54/46	56/44	0.7432
Age (mean±SD)	40.8±10.9	37.4±9.6	0.0381 ^a
Week 8 HAM-D score (mean±SD)	8.2±5.3	8.5±5.5	0.6920

^a Significant difference between completer groups ($P < 0.05$ by Student-t test)

Figure 1S.

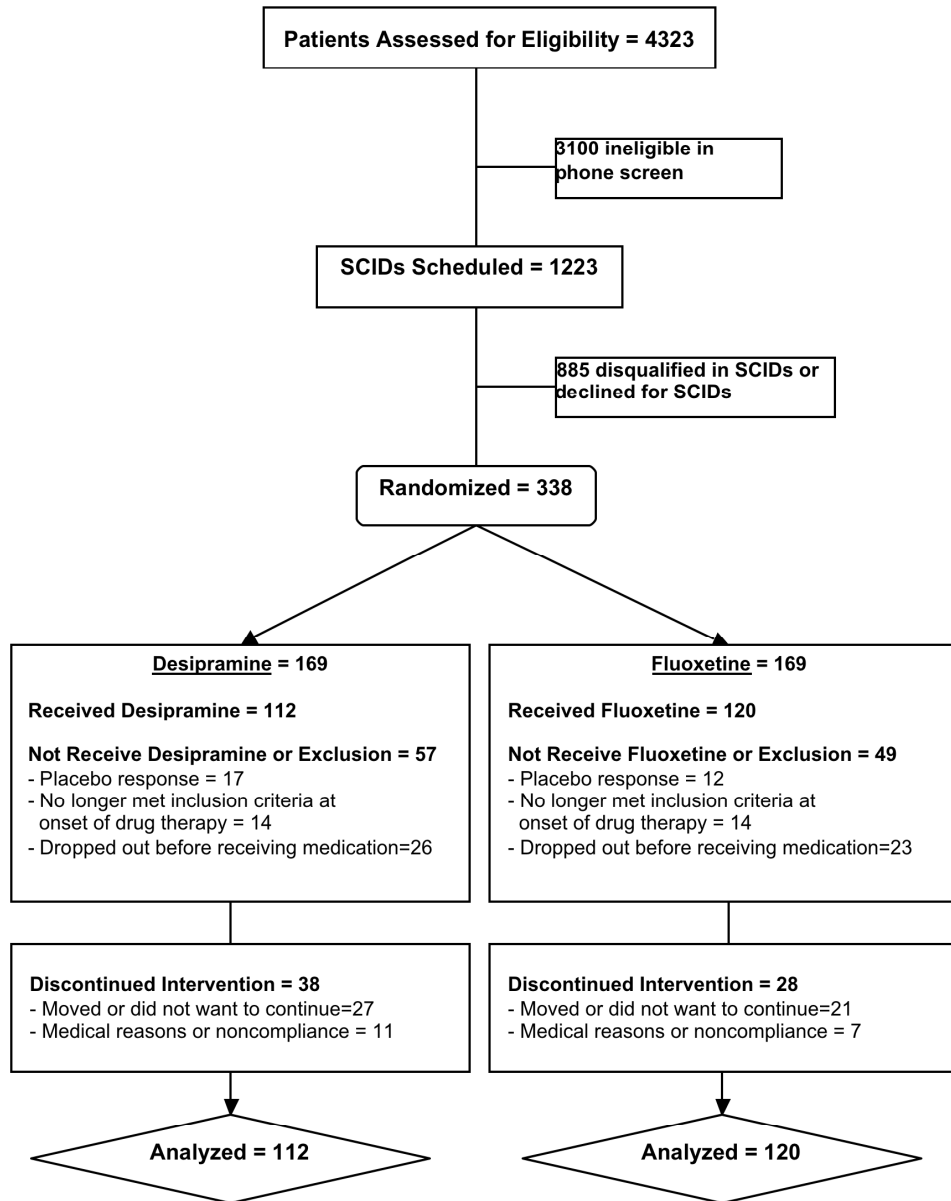


Figure 2S.

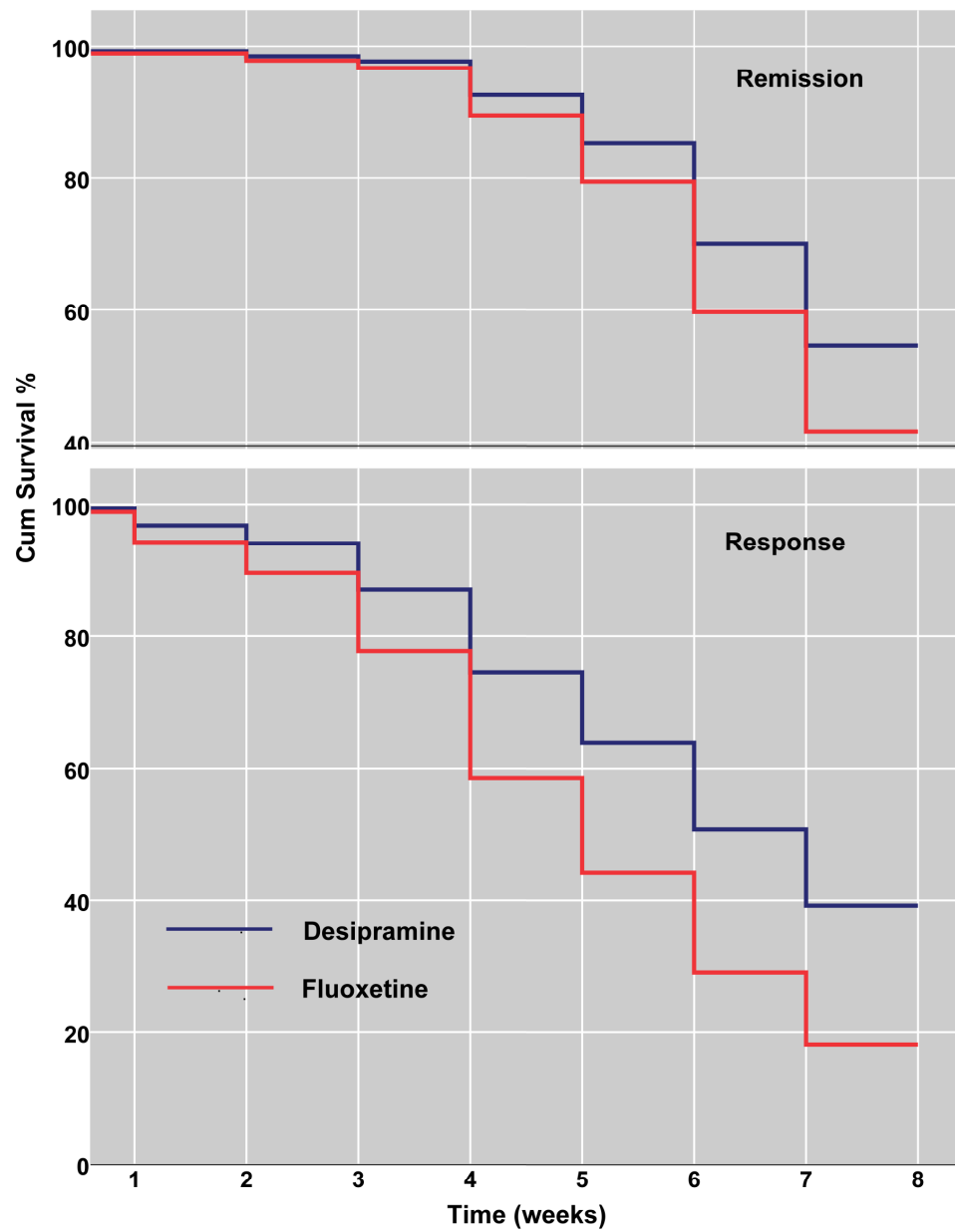
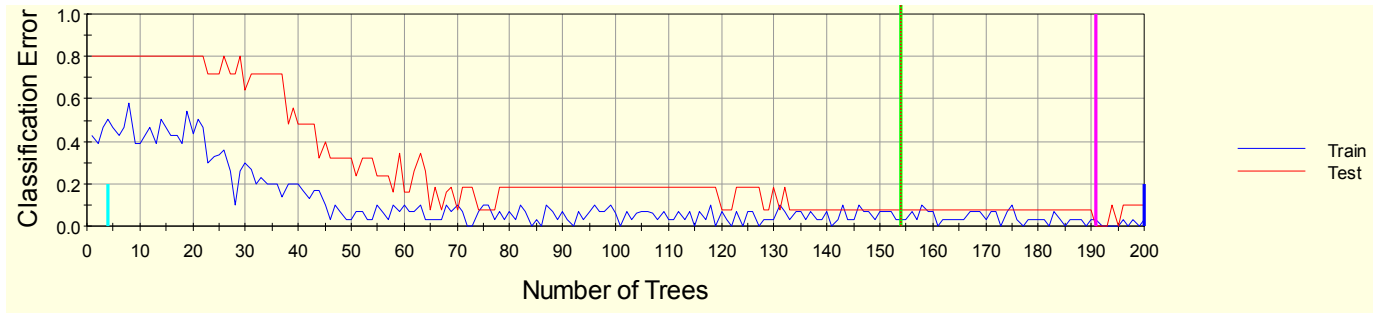
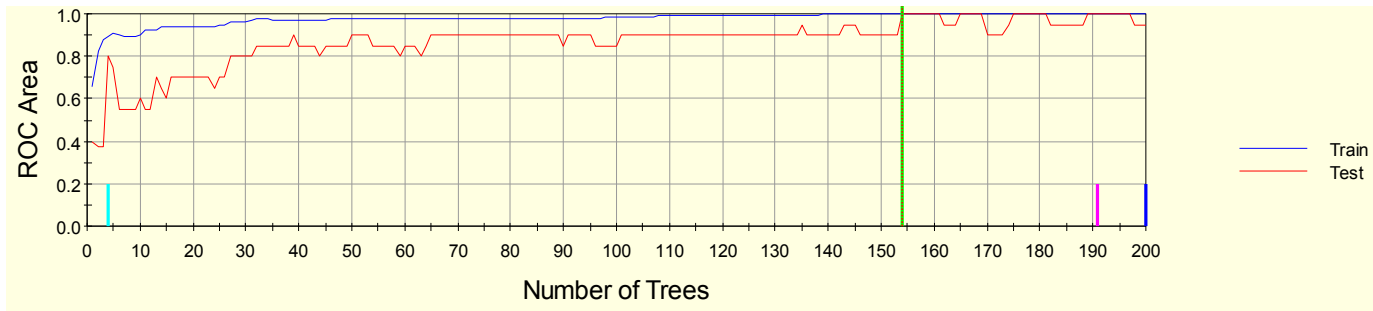


Figure 3S.

A



B



C

Variable	Score	
EXM_RS1321744\$	100.00	
EXM_RS16867321\$	38.09	
EXM_RS8028182\$	33.65	
EXM2264428\$	31.54	
EXM433050\$	31.40	
EXM2258456\$	29.61	
EXM1127512\$	28.88	
EXM1125245\$	28.56	
EXM2266789\$	26.60	