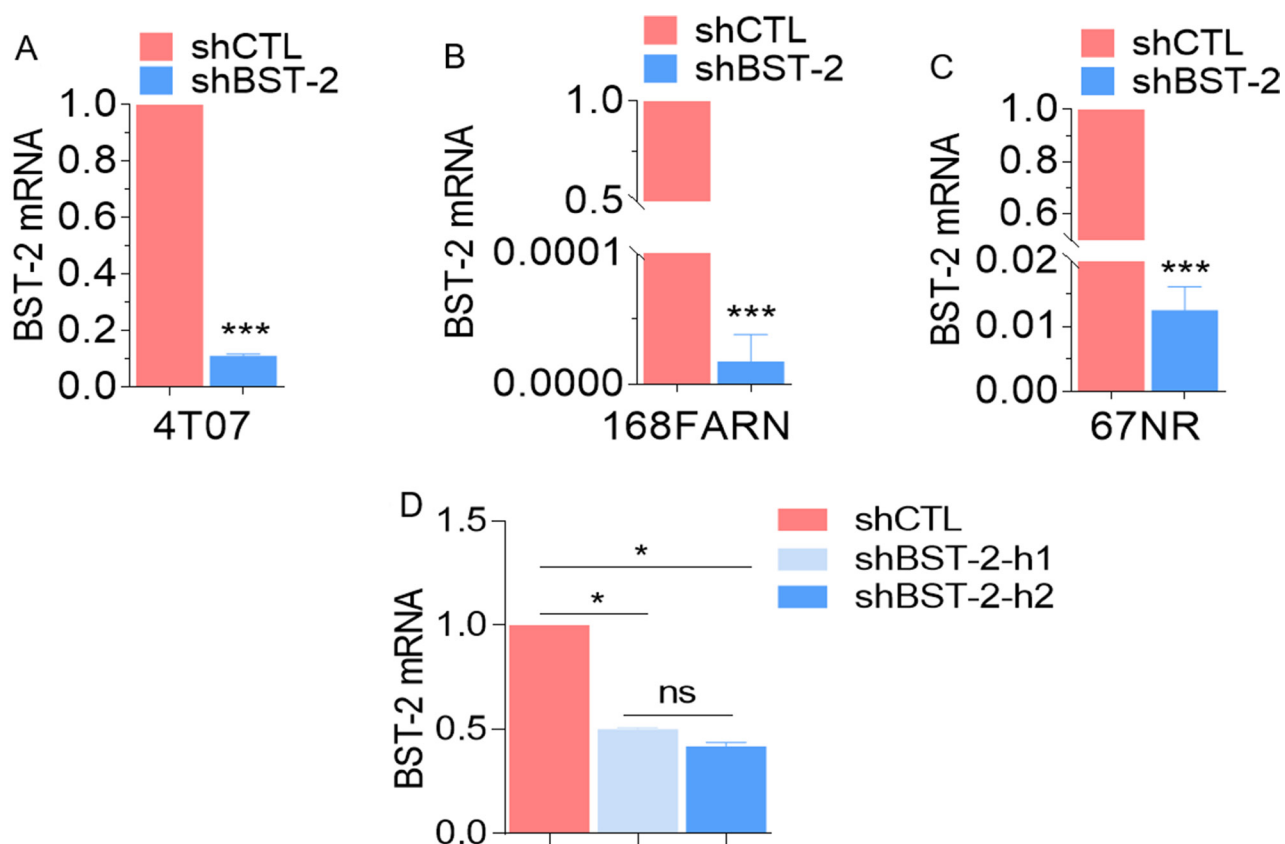


## Structural determinant of BST-2-mediated regulation of breast cancer cell motility: a role for cytoplasmic tail tyrosine residues

### SUPPLEMENTARY MATERIALS



**Supplementary Figure 1: Generation of BST-2-suppressed cells.** (A–C) Relative levels of murine BST-2 mRNA in murine cells stably expressing a scramble shRNA (shCTL) or BST-2-targeting shRNA. (D) mRNA levels of BST-2 in MDA-MB-231 cells stably expressing a scramble shRNA (shCTL) or two different BST-2-targeting shRNAs (shBST-2-h1, shBST-2-h2). RT-qPCR data were normalized to GAPDH.