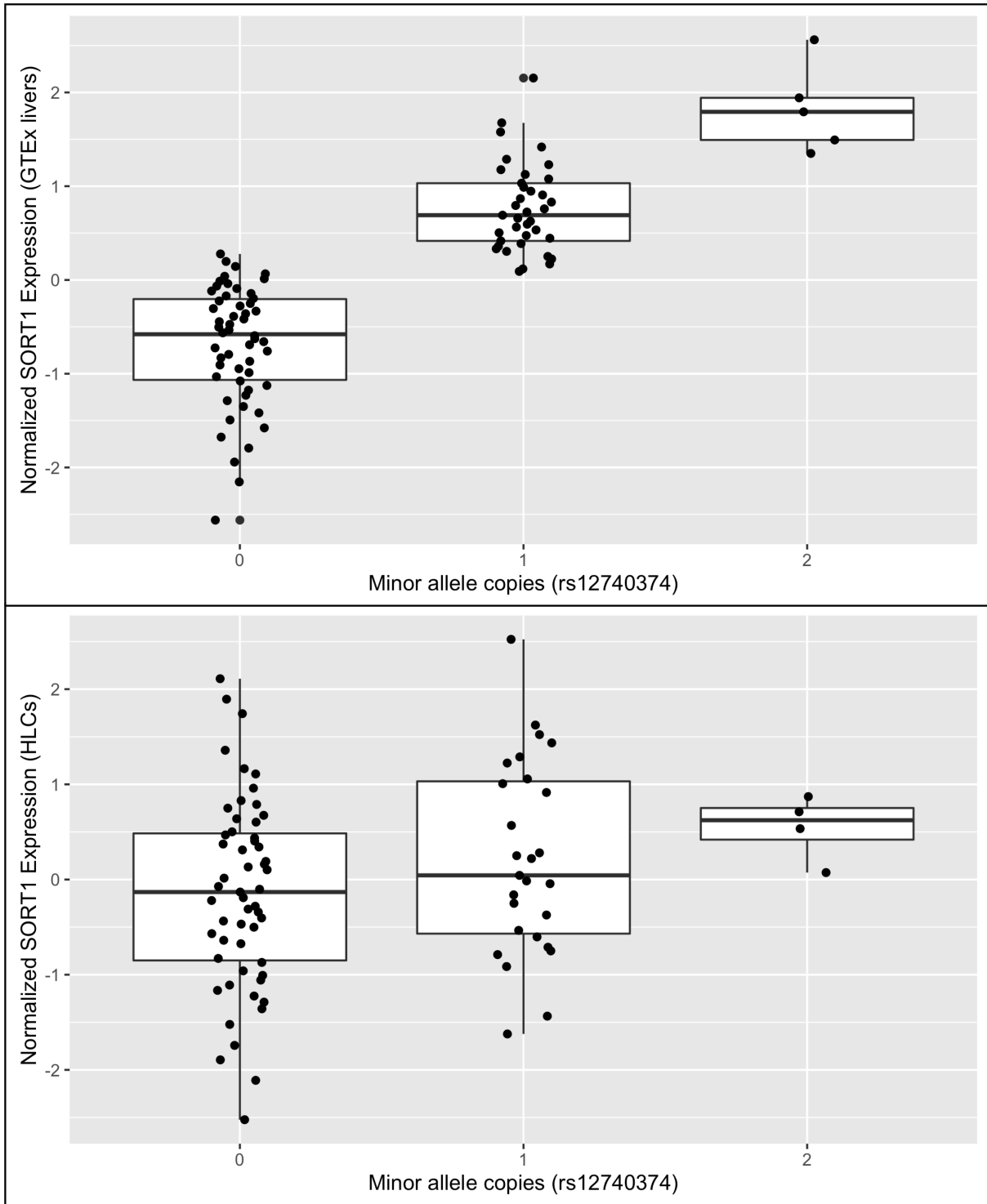
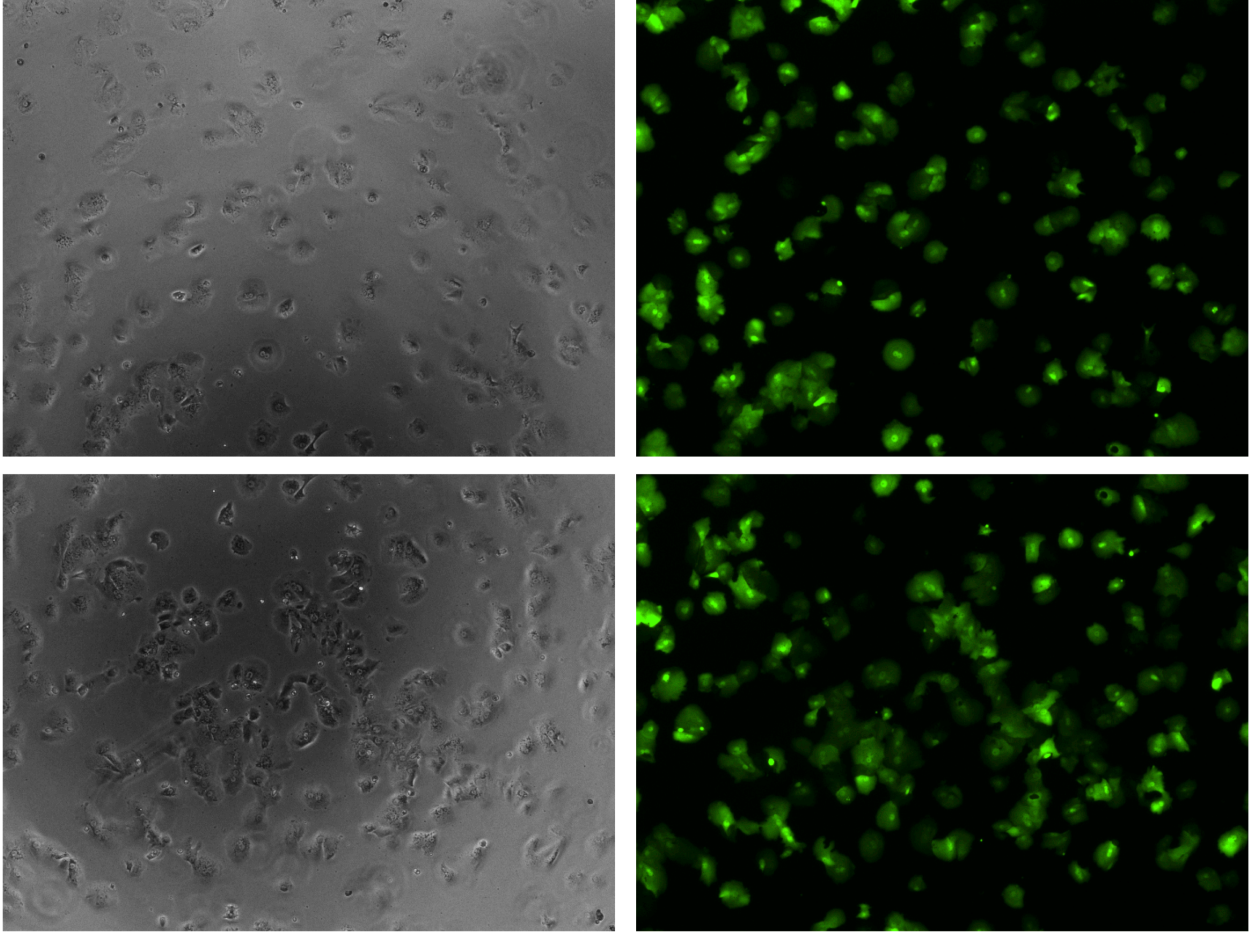


SUPPLEMENTAL MATERIAL

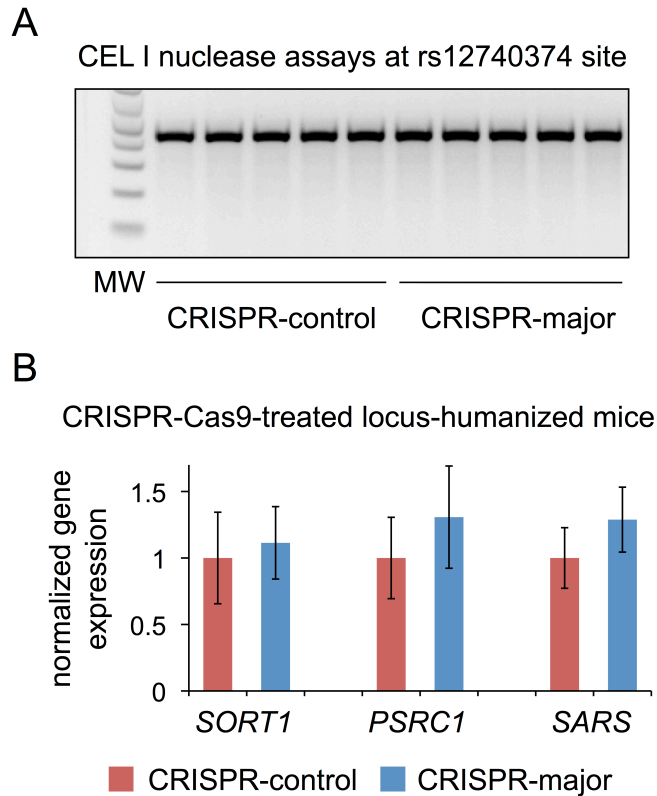
SUPPLEMENTAL FIGURES



Supplemental Figure I. Expression of *SORT1* in GTEx livers and HLCs of varied rs12740374 genotypes.



Supplemental Figure II. Infection of Primary Human Hepatocytes with Adenovirus Expressing GFP.



Supplemental Figure III. Effects of CRISPR-Cas9 targeting of the rs12740374 major allele sequence in locus-humanized mice. **A** shows CEL-I nuclease assays performed with PCR amplicons around the rs12740374 SNP site from liver genomic DNA from locus-humanized mice administered CRISPR-control or CRISPR-major adenovirus. No cleavage products are evident. **B** shows the hepatic expression levels of *SORT1*, *PSRC1*, and *SARS* from the human BAC locus, normalized to the mean of the expression levels of all of the CRISPR-control mice, two weeks after virus treatment ($N = 5$ CRISPR-control mice and 5 CRISPR-major mice). The data are displayed as means and s.e.m. for the mice within each treatment group. P values were calculated using the Mann-Whitney U test to compare the two treatment groups for each gene.