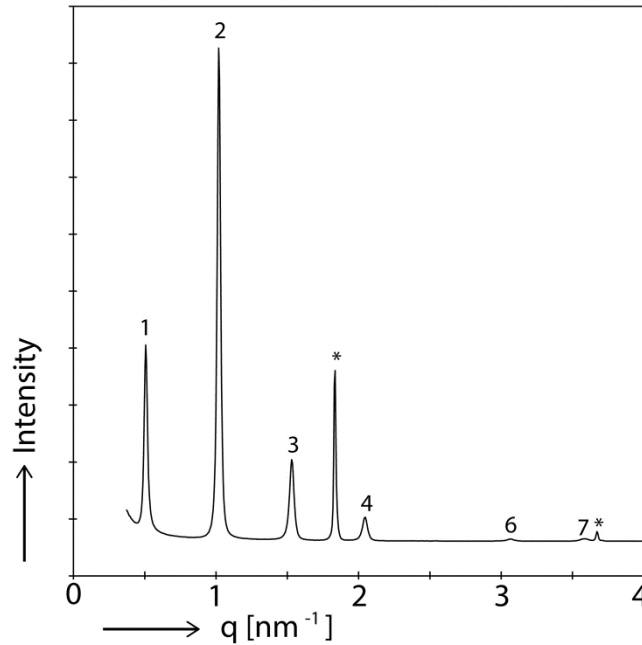


Evidence of hydrocarbon nanodrops in highly ordered Stratum Corneum model membranes

Adrian Paz Ramos,[†] Gert Gooris,[‡] Joke Bouwstra,[‡] Michel Lafleur^{†*}



Supplemental Figure S1. SAXD patterns of the Cer EOS/Cer NS/FFAs/Chol mixture, showing the LPP formation. The * indicates the peaks associated with crystalline cholesterol. Diffraction peaks denoted by 1,2,3, 4, 6 and 7 are the 1st, 2nd, 3rd, 4th, 6th and 7th order attributed to the LPP. The repeat distance is 12.4 nm. This value is calculated from the positions of the 1st, 2nd, 3rd and 4th order located at q-values of 0.507, 1.01, 1.53 and 2.04 nm⁻¹, respectively.