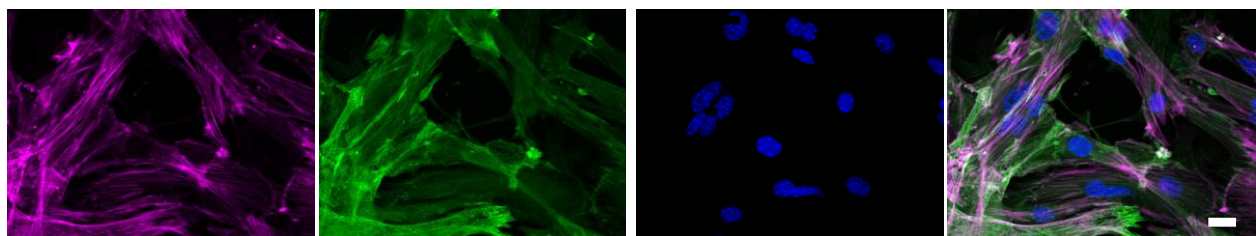
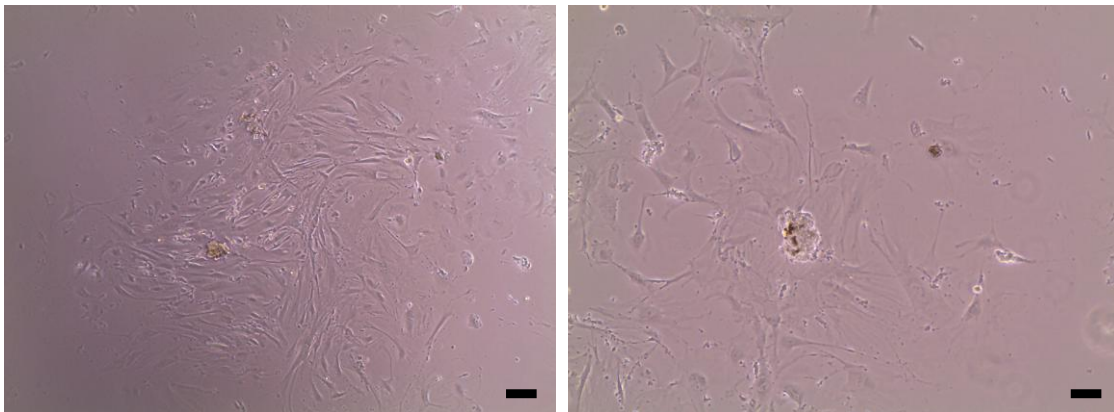


## Supplemental Figure Legend

**Supplemental Figure 1: (a) Upper panel** at 10x magnification (black scale bar = 100  $\mu\text{m}$ ) shows primary podocyte cells culture derived from glomeruli isolated from kidney tissues; panel at 20x magnification (black scale bar = 50  $\mu\text{m}$ ) shows glomerulus in which beads (dark brown spots) used for isolation of glomeruli from whole kidneys are visible. **Lower panels** show fixed podocytes stained with F-actin (magenta color), synaptopodin (green), and DAPI (blue) staining of nuclei. Merged image shows colocalization of F-actin and synaptopodin (white color). White scale bar = 20  $\mu\text{m}$ .

### Supplemental Figure 1



F-actin

Synaptopodin

DAPI

Merge