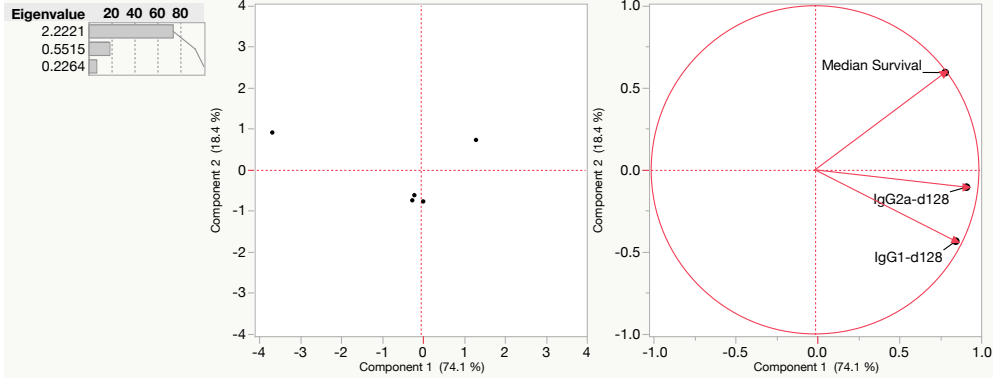


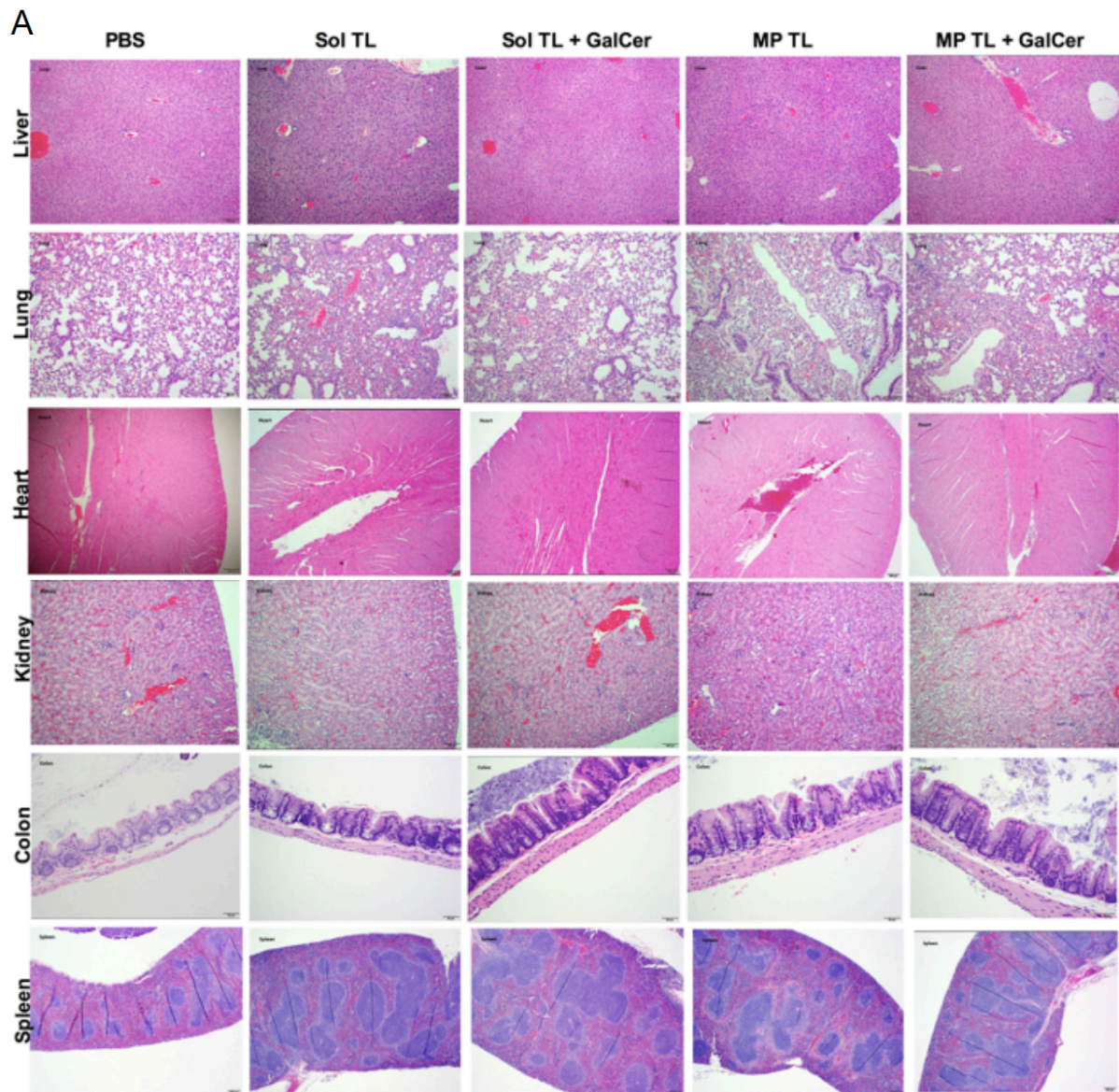
# G

## Pairwise correlation

	Median Survival	IgG1-d128	IgG2a-d128
Median Survival	1.0000	0.4606	0.6223
IgG1-d128	0.4606	1.0000	0.7397
IgG2a-d128	0.6223	0.7397	1.0000



**Supplementary Figure 8.** Principal Component Analysis (PCA) of antitumor immune response of therapeutic lysate vaccines. Median survival of various tumor lysate vaccine groups (Figure 2) and cellular (Figure 3) and humoral (Figure 4) were analyzed by PCA using JMP 12 software.



**Supplementary Figure 9.** (A) H&E stained tissue sections of various organs (Scale bar: Liver – 100  $\mu$ m, Lung- 100  $\mu$ m, Heart – 200  $\mu$ m (PBS-100  $\mu$ m), Kidney- 100  $\mu$ m, Colon-50  $\mu$ m, Spleen-200  $\mu$ m), and (B-C) anti naïve B cell lysate and anti A20 tumor lysate antibody levels in serum (at 100 dilution; n=3; MP TL + GalCer: n=2) for various vaccine groups at day 128 of therapeutic immunization study as shown in Figure 2A. Data represent Mean  $\pm$  S.D.