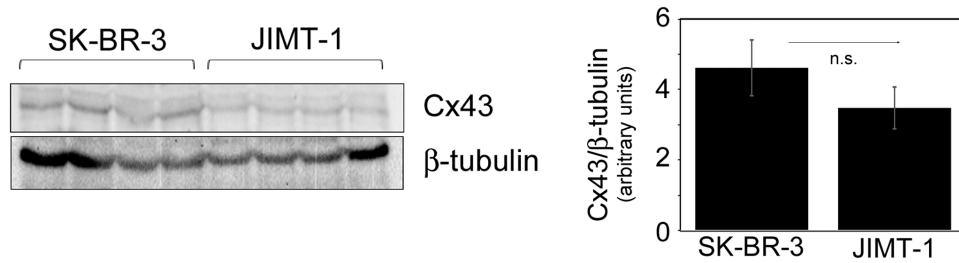
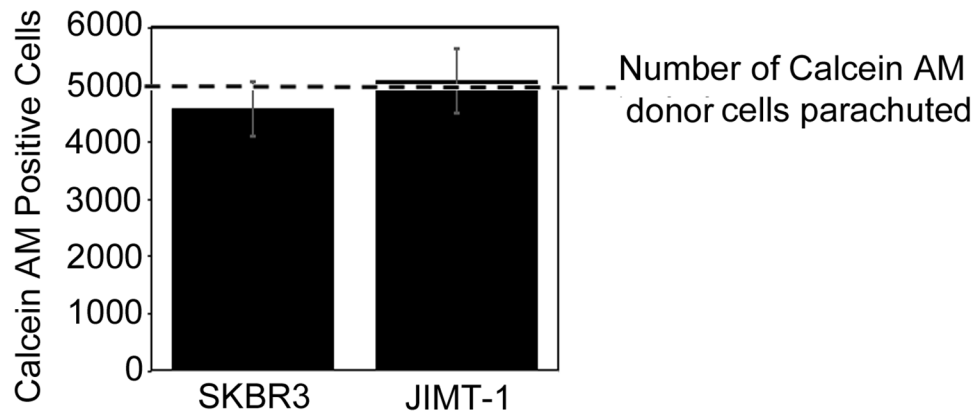


## Dysregulated connexin 43 in HER2-positive drug resistant breast cancer cells enhances proliferation and migration

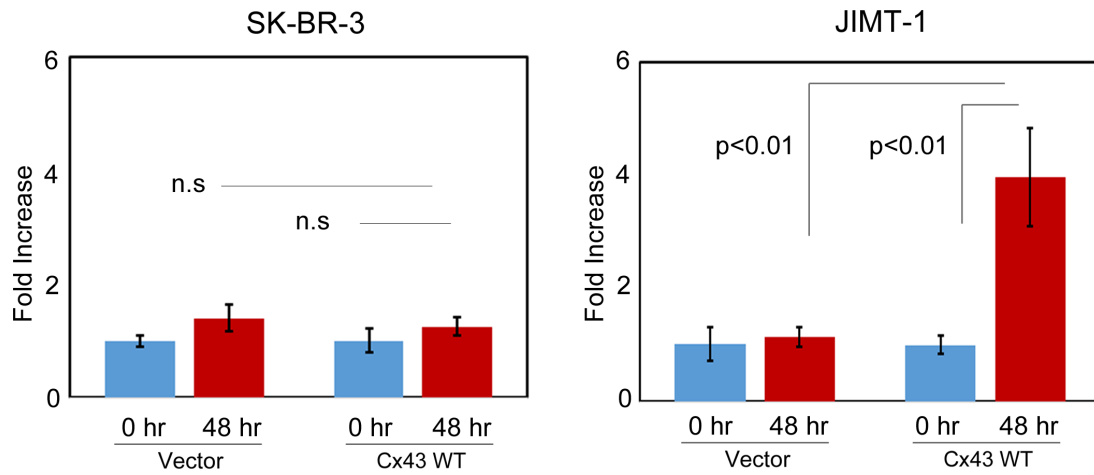
### SUPPLEMENTARY MATERIALS



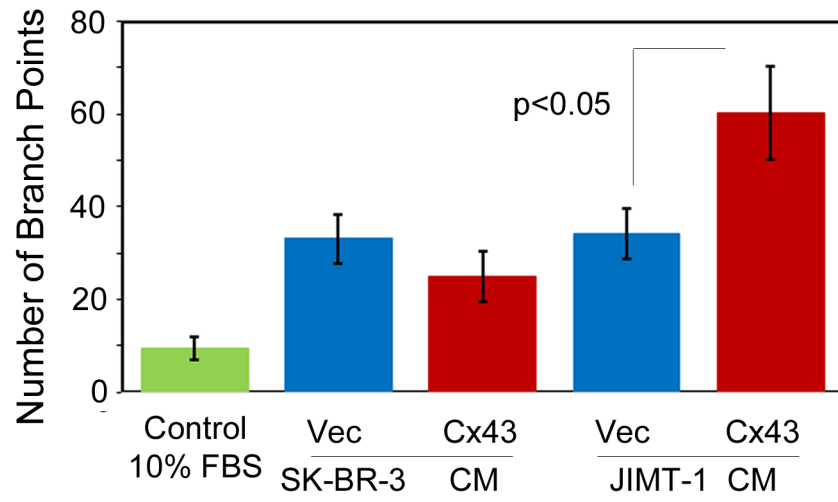
Supplementary Figure 1: Quantitation of endogenous Cx43 protein levels in SK-BR-3 and JIMT-1 cells.



Supplementary Figure 2: Baseline coupling in SK-BR-3 and JIMT-1 cells.



Supplementary Figure 3: Cell viability under serum limiting conditions of SK-BR-3 and JIMT-1 cells expressing a vector control or Cx43.



Supplementary Figure 4: Angiogenesis is induced by Cx43 in JIMT-1 cells.