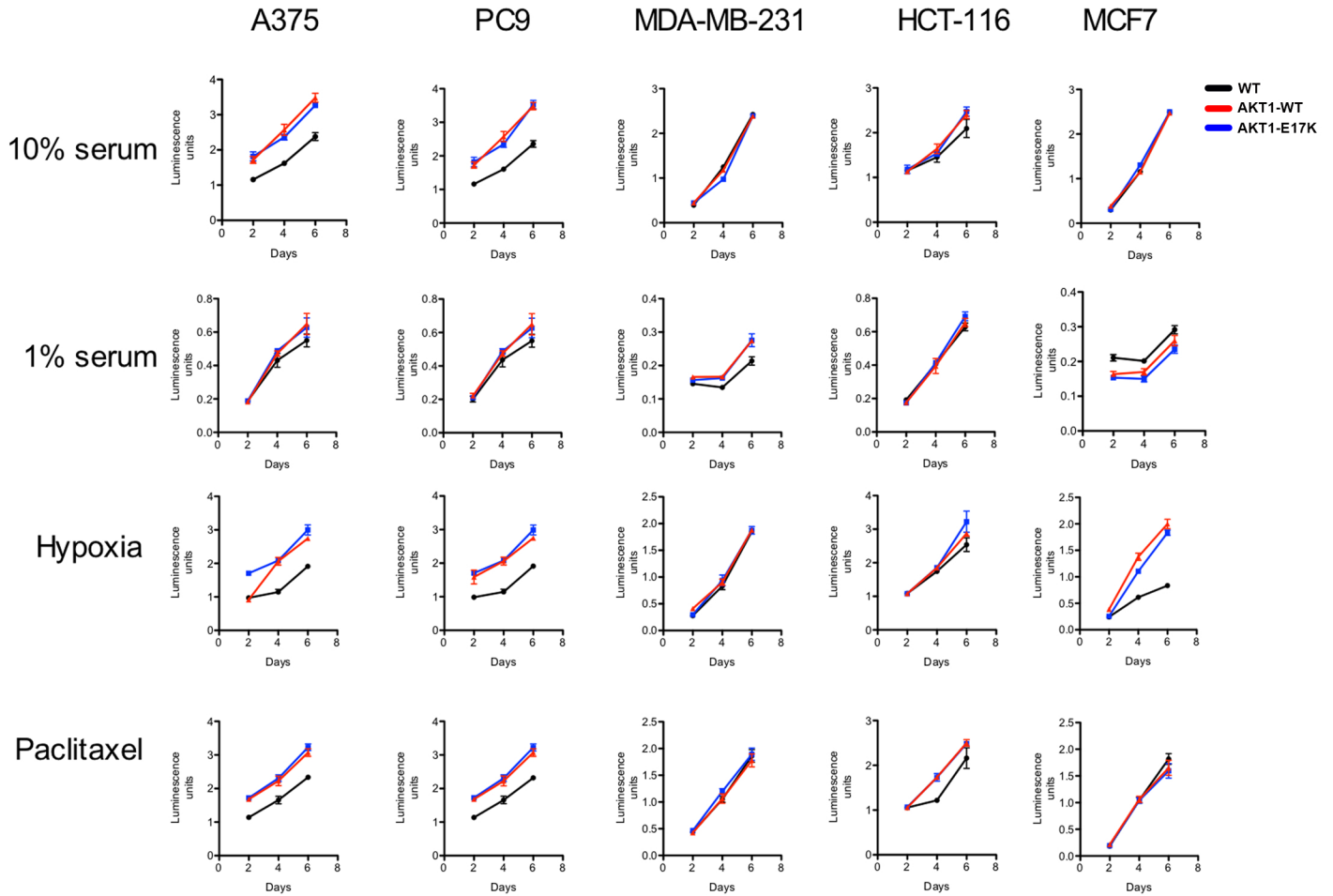


Supplemental Figure 2



Supp. Fig. 2. AKT1-WT versus AKT1-E17K: Functional assays in vitro (Part 1).

Proliferation assays performed three days after induction of AKT1-WT or AKT1-E17K protein under normal fetal bovine serum (10%), low serum (1%), hypoxia (4% O₂), and with paclitaxel chemotherapy (0.5 μM). Error bars indicate mean ± SEM.