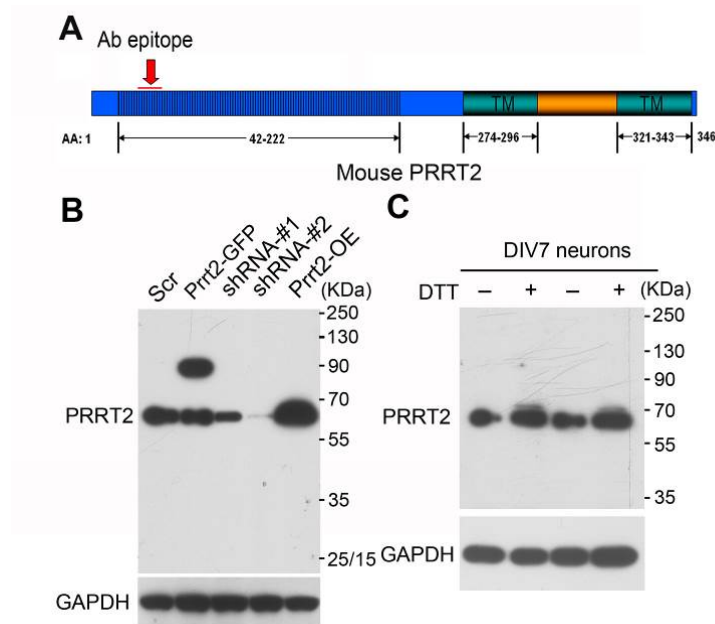


## Supplementary information, Figure S1



**Figure S1 Generation of rabbit anti-PRRT2 antibody and characterization of PRRT2 protein.** (A) Diagram of the targeted regions of our polyclonal rabbit anti-mouse PRRT2 antibody. (B) Verification of PRRT2 band in western blot using specific shRNAs, GFP-fused constructs, full-length constructs of mouse PRRT2 that were transfected into cultured mouse cortical neurons. GAPDH was used as a loading control. (C) Western blot analysis of dithiothreitol (DTT)-treated neuronal cultures using PRRT2 antibody. The immunoreactive band had no changes after treatment with DTT, excluding the possibility of di-sulfide bond mediated dimerization.