

Supplementary information, Figure S3

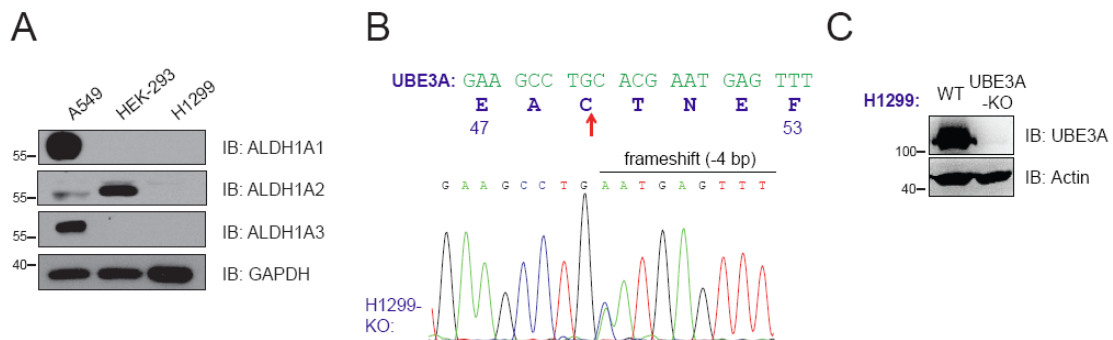


Figure S3 Low abundances of endogenous ALDH1A family proteins in H1299 cell line and its derivative H1299 *UBE3A*^{-/-} cells. (A) Surveying the static levels of endogenous ALDH1A1, 2, 3 proteins in different experimental cell lines, as revealed by IB analysis using antibodies against the respective proteins. (B) Partial sequencing of the CRISPR-targeted region in *UBE3A* locus in H1299 cells. Upper: partial sequence of the disrupted region in *UBE3A* gene; lower: sequencing chromatogram of the *UBE3A*^{-/-} cells. Red arrows indicated the starting point of frameshift (loss of 4 bp). (C) IB analysis to confirm the genetic ablation of *UBE3A* in H1299-derived *UBE3A*^{-/-} cells, in comparison with that of the parental wild-type H1299 cells. All experiments were conducted at least three times.