

Supplementary information, Figure S5

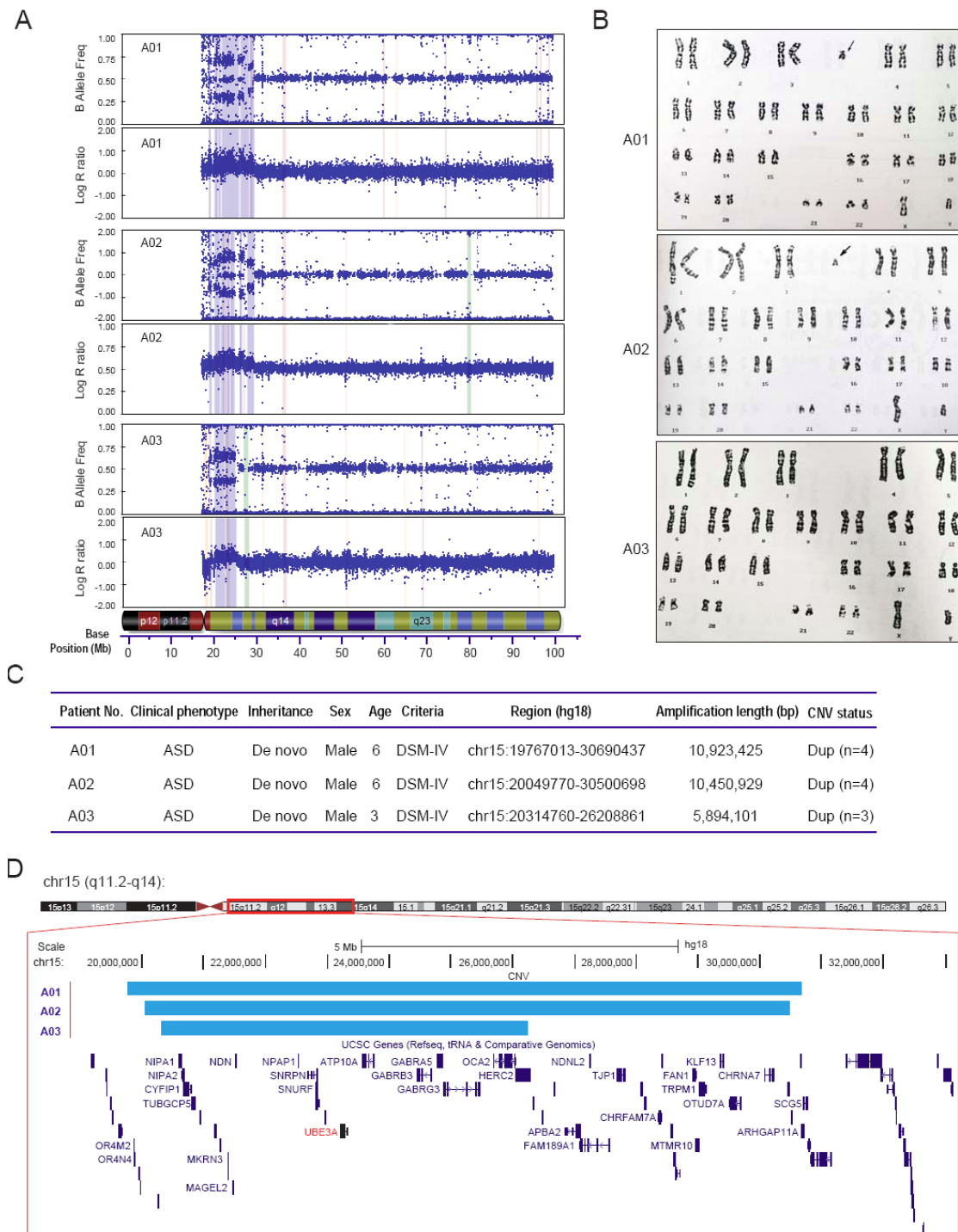


Figure S5 Copy number amplification identified in three autism patients. (A) Plots of B allele frequencies and Log R ratios indicated copy number amplification in

chromosome 15q11.2-q14 from three autism patients (labeled A01-A03), respectively. **(B)** Karyotype analysis of peripheral blood lymphocytes from three autism patients (labeled A01-A03). The arrows highlighted the isodicentric chromosomes. **(C)** Copy number variations of *UBE3A*-included region in three ASD patients. **(D)** The duplicated DNA regions of three ASD patients (blue colors) were mapped to human genome assembly hg18 using UCSC genome browser, with locations (15q11.2 to q14) highlighted in red box. The known genes within the overlapped region were exhibited at the bottom of the map, with *UBE3A* gene painted in red.